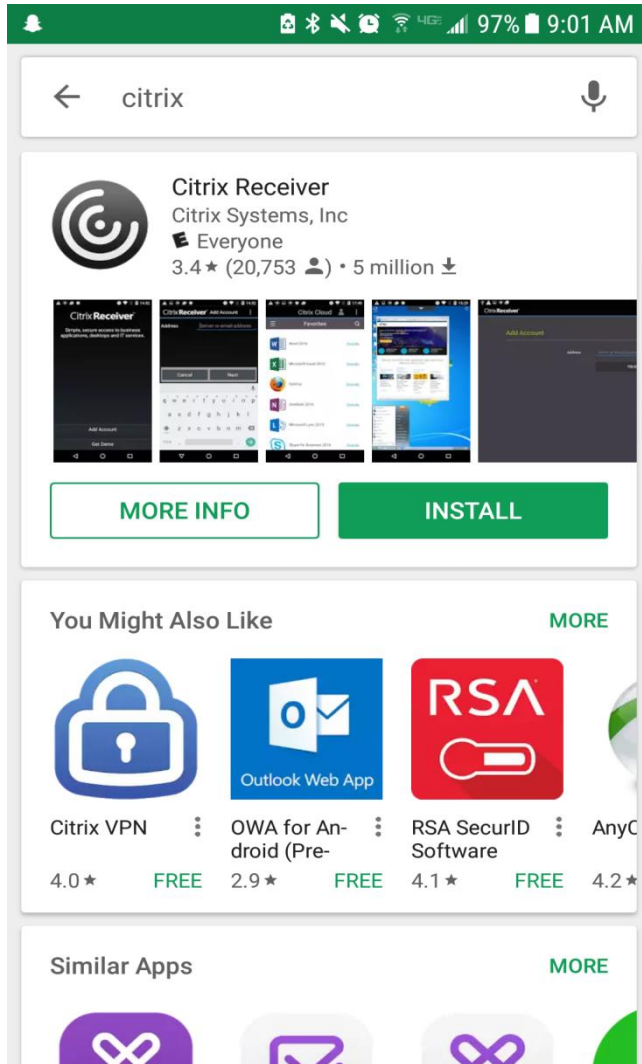


DART Access for Android Tablet Computers

(See page 5 for IOS Instructions)

DART can now be fully accessed on Android or iPad Tablet computers. The access to DART on a tablet computer is the same as working from a desktop PC; all that is required is that your tablet have an internet connection and be able to access the Citrix Receiver application. To get started just follow these easy steps:

Add the “Citrix Receiver” application to your tablet from your App Store:



Add Account:

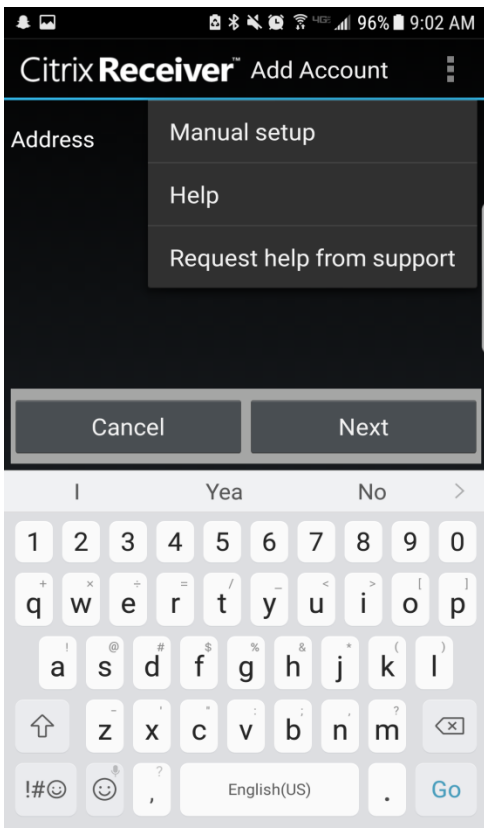


Manual Setup - Address: <https://extranet.kindermorgan.com>

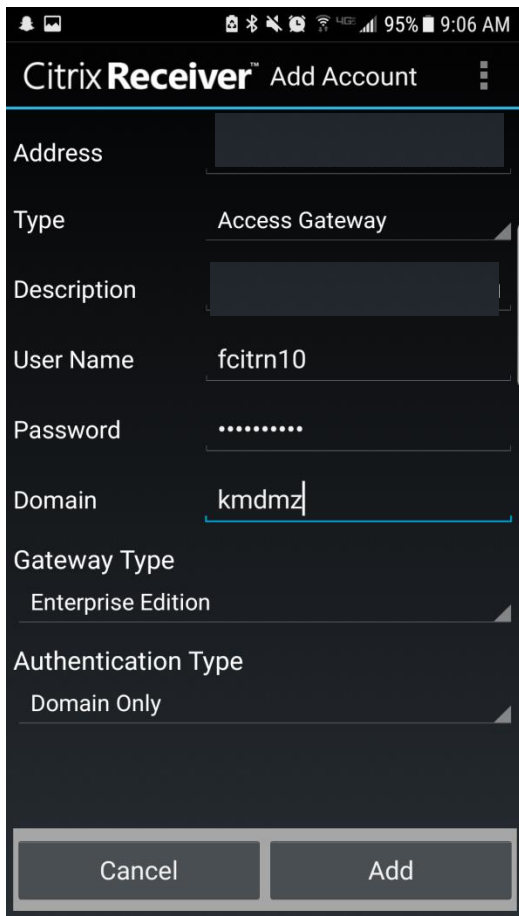
Type: Access Gateway

User Name/Password: Same as if logging on from desktop PC

Domain: KMDMZ



Configuration:



Citrix Receiver™ Add Account

Address

Type Access Gateway

Description

User Name fcitrn10

Password

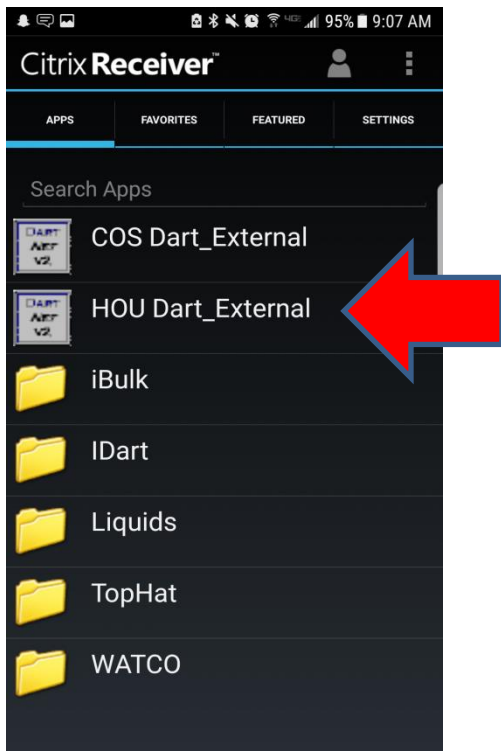
Domain kmdmz

Gateway Type Enterprise Edition

Authentication Type Domain Only

Cancel Add

LOGON – HOU DART_EXTERNAL:



Tablet Support

Kinder Morgan **does not** provide tablet computer support. Upgrades to a tablet's operating system, or to the Citrix Receiver App, may cause connectivity issues. Customers who are experiencing connectivity problems need to contact their service provider and/or the Citrix website for help.

If Kinder Morgan makes any changes that affect tablet computer accessibility, the required changes will be posted on EBB under "COMPUTER SYSTEM STATUS – DART SYSTEM INFORMATION" as soon as they are identified.

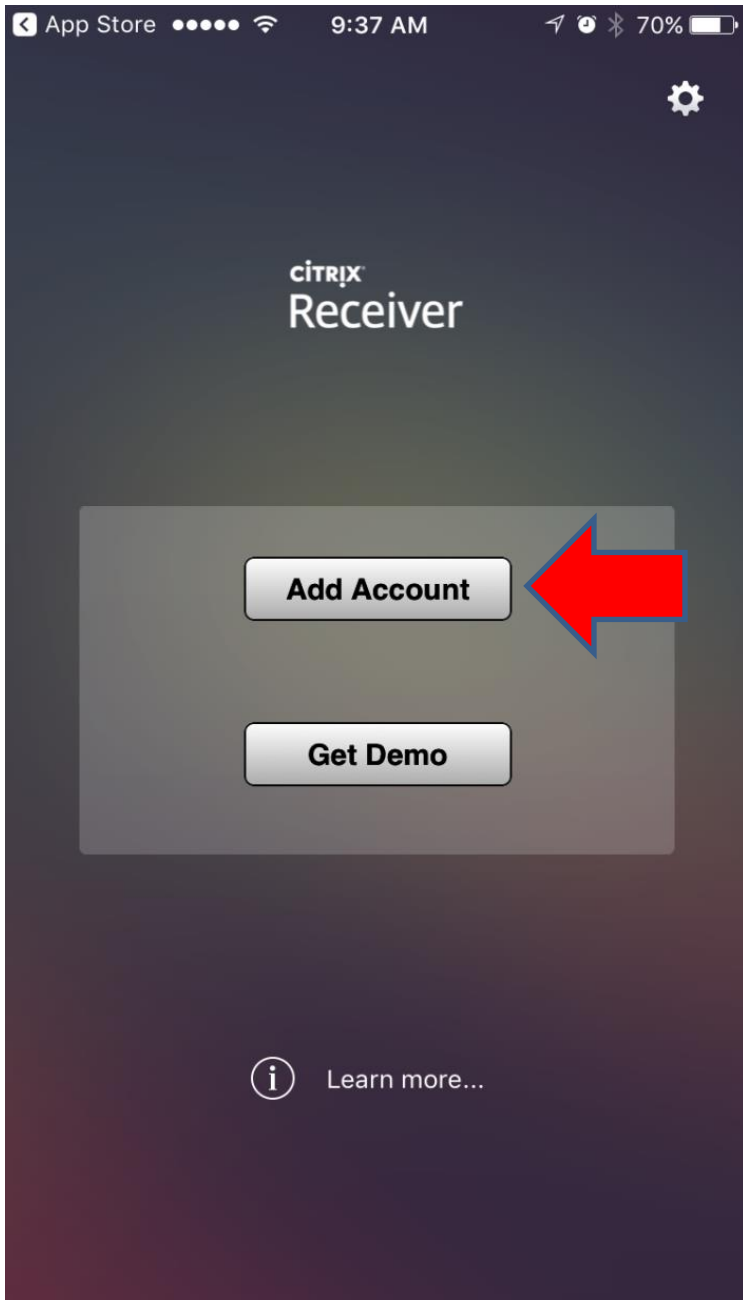
DART Access for IOS Tablet Computers

DART can now be fully accessed on Android or iPad Tablet computers. The access to DART on a tablet computer is the same as working from a desktop PC; all that is required is that your tablet have an internet connection and be able to access the Citrix Receiver application. To get started just follow these easy steps:

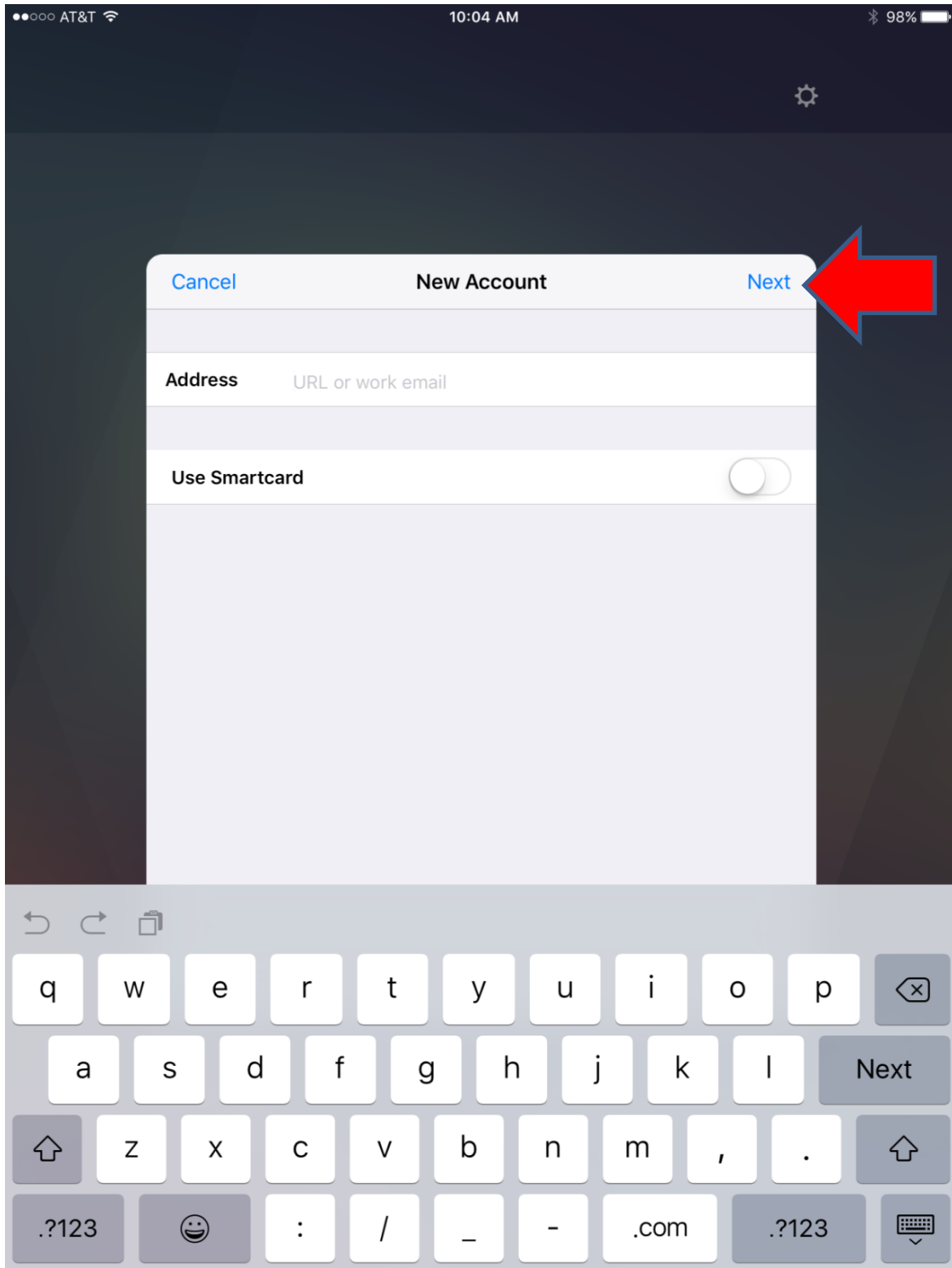
Add the “Citrix Receiver” application to your tablet from your App Store:



Add Account:



Tap screen to remove keyboard and go to the NEXT screen.
Click Options for Manual Setup:

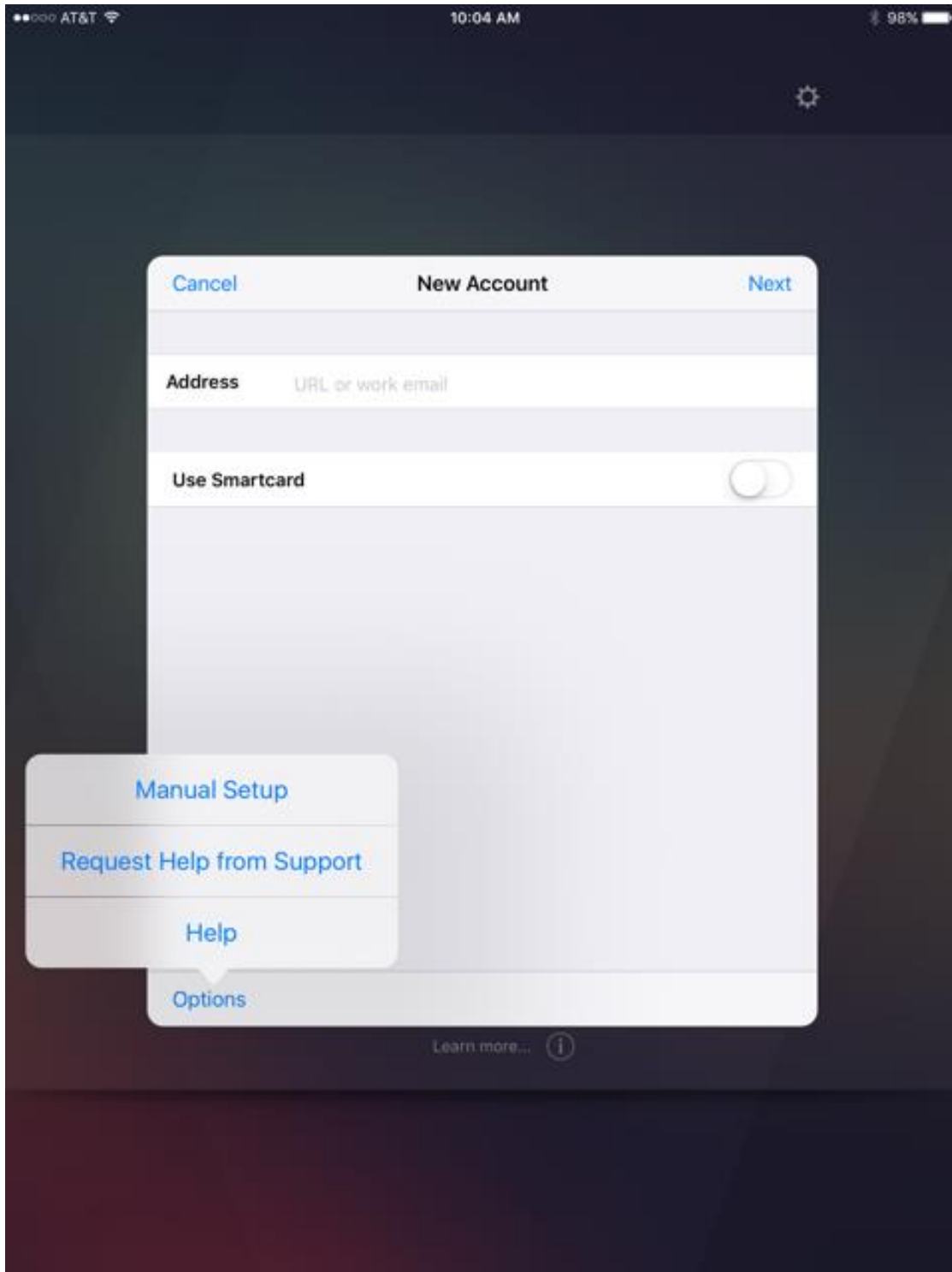


Manual Setup - Address: <https://extranet.kindermorgan.com>

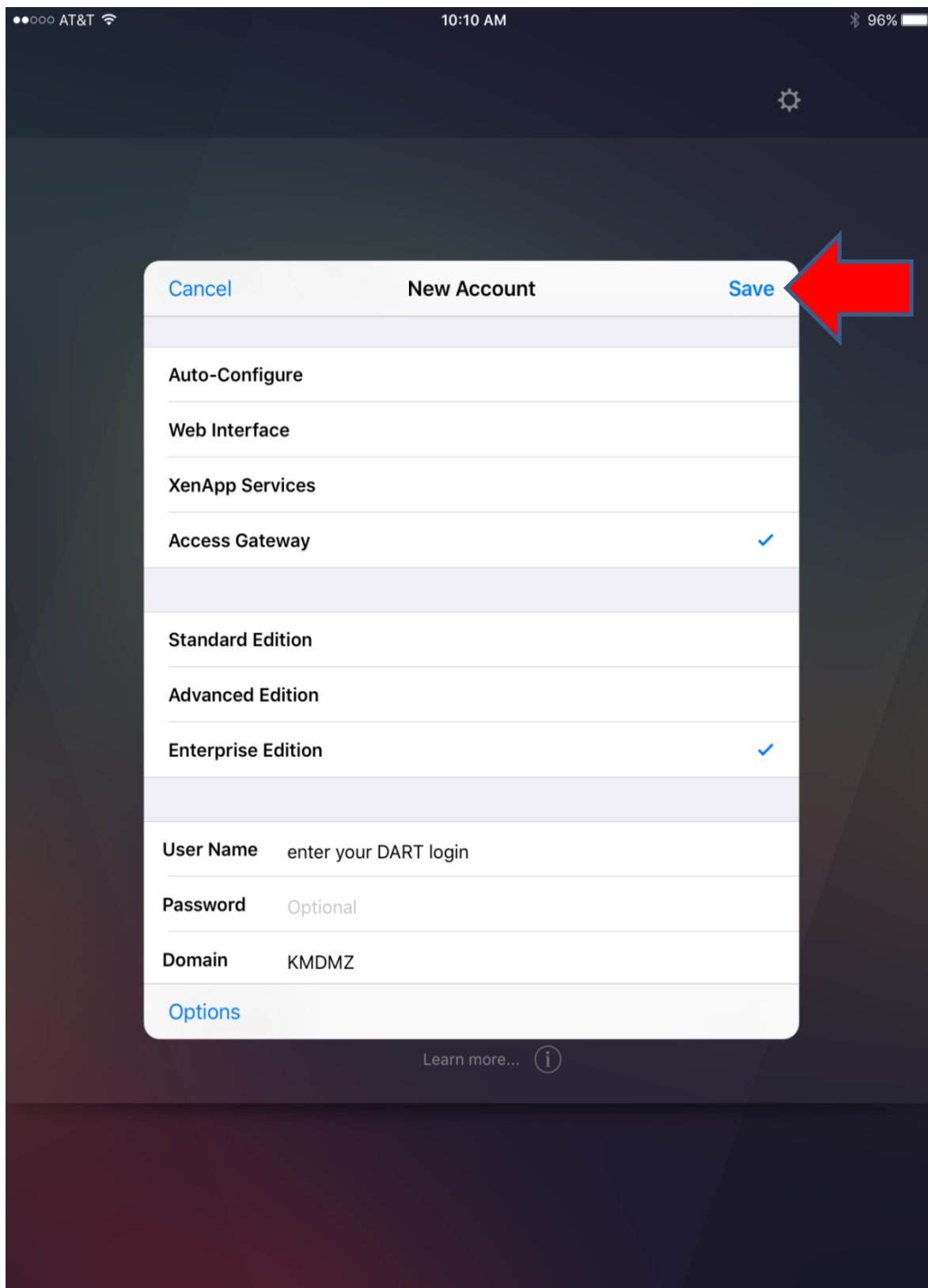
Type: Access Gateway

User Name/Password: Same as if logging on from desktop PC

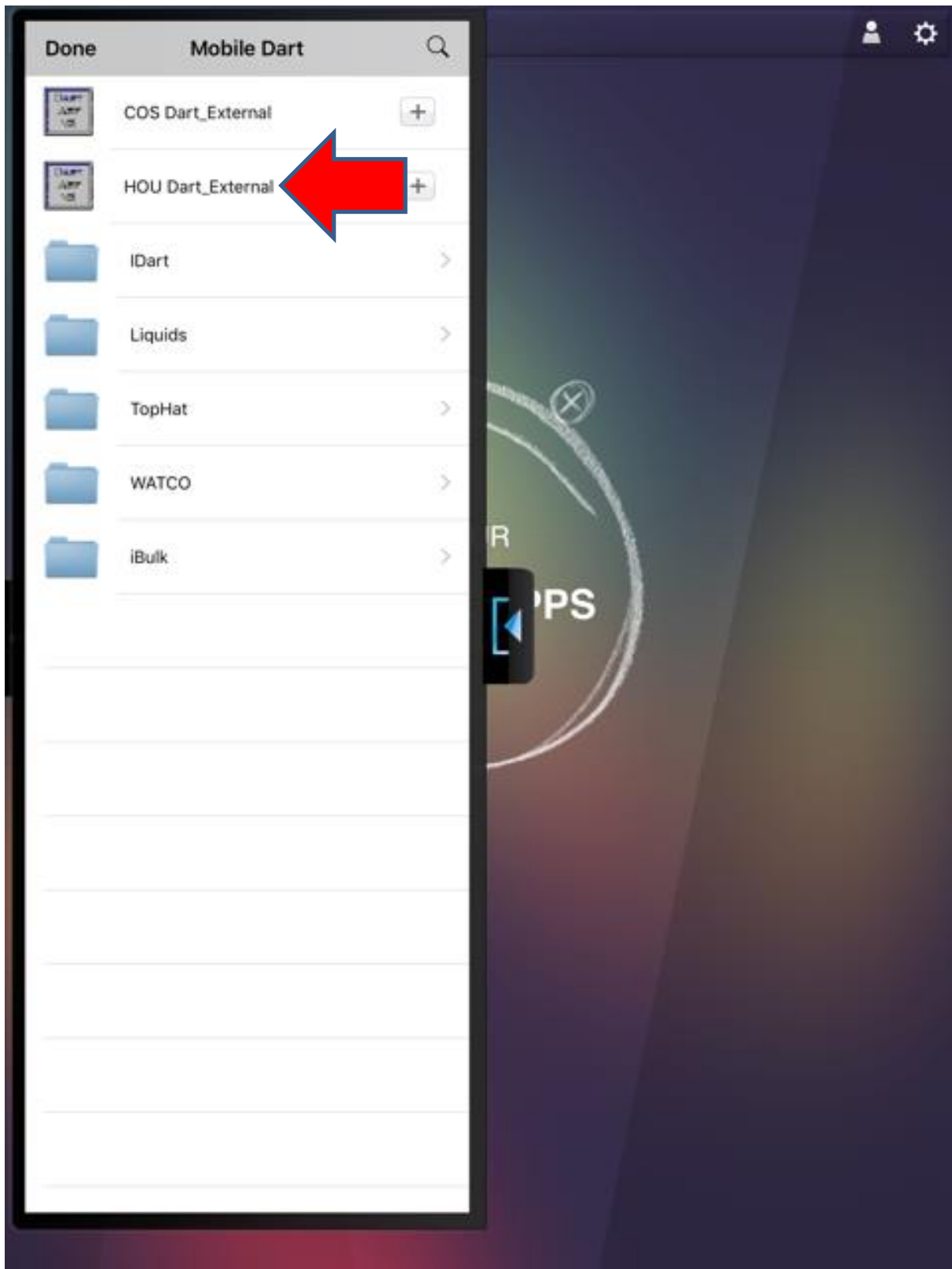
Domain: KMDMZ

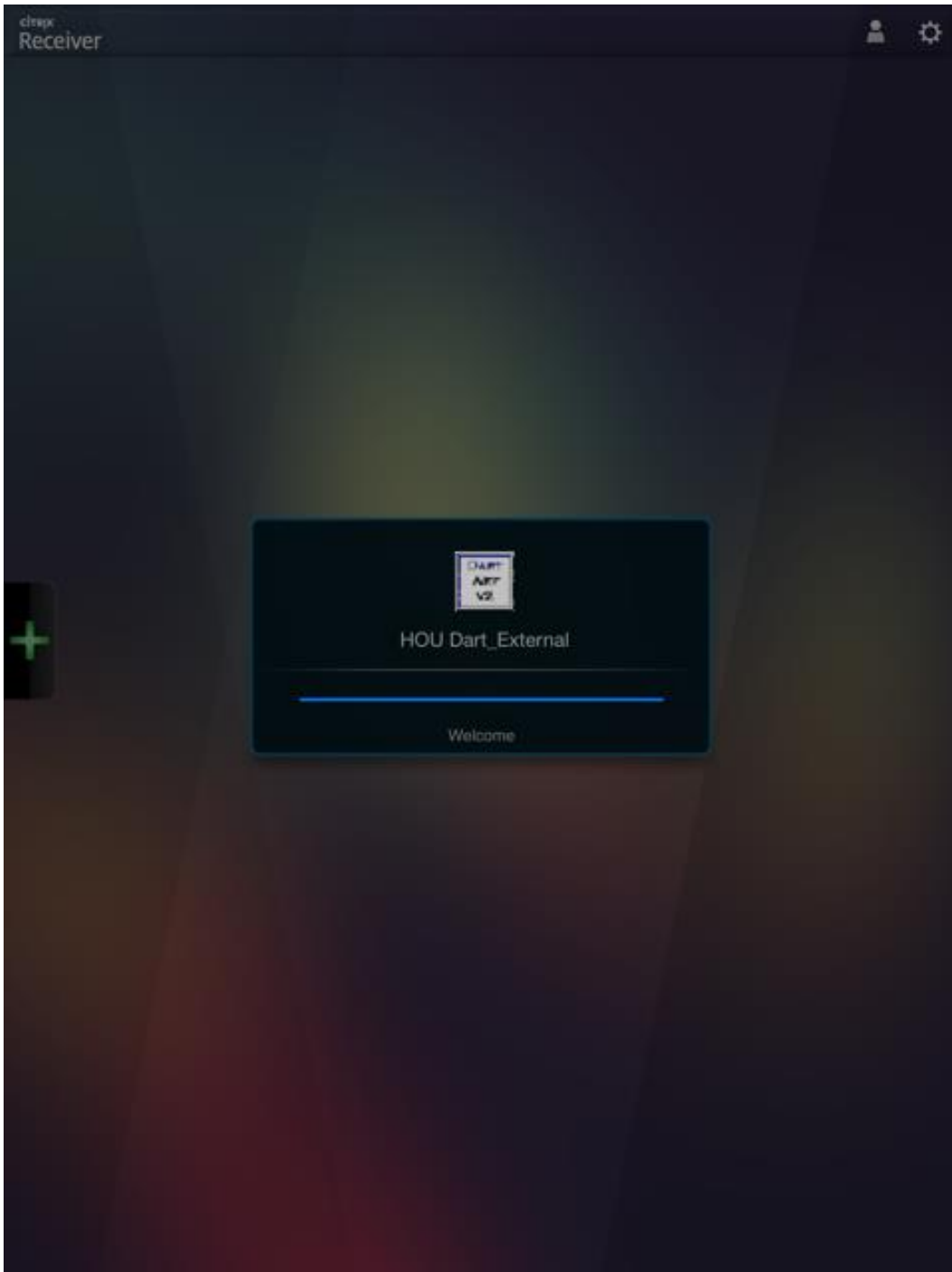


Configuration: Click SAVE when finished.



LOGON – HOU DART_EXTERNAL:





Tablet Support

Kinder Morgan **does not** provide tablet computer support. Upgrades to a tablet's operating system, or to the Citrix Receiver App, may cause connectivity issues. Customers who are experiencing connectivity problems need to contact their service provider and/or the Citrix website for help. If Kinder Morgan makes any changes that affect tablet computer accessibility, the required changes will be posted on EBB under "COMPUTER SYSTEM STATUS – DART SYSTEM INFORMATION" as soon as they are identified.