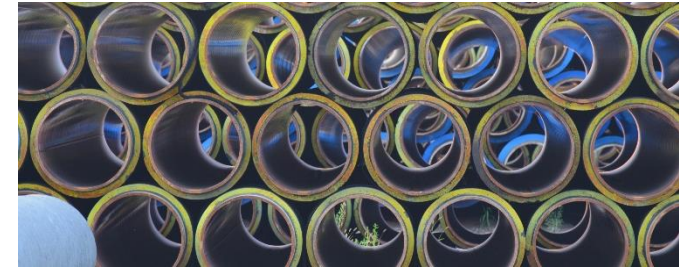




Delivering Energy to Improve Lives

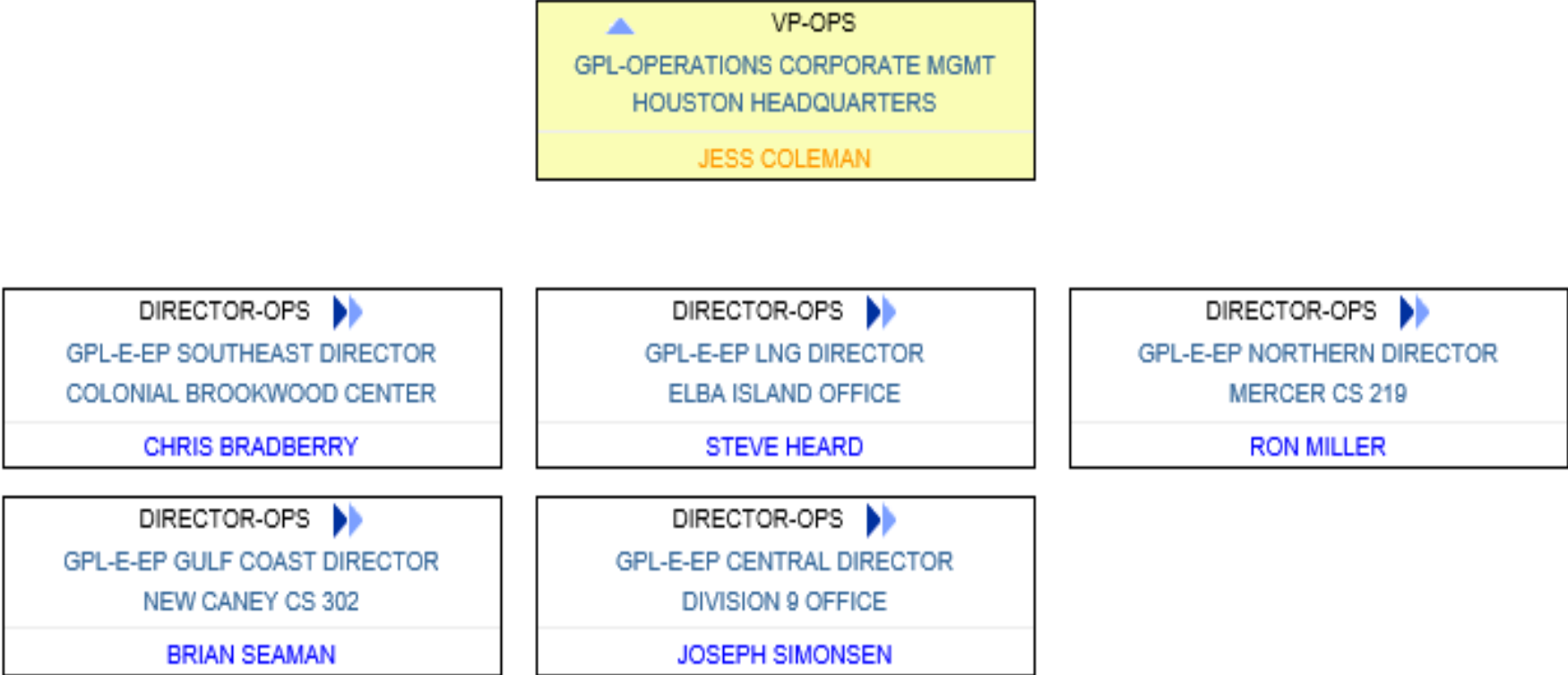
2024-2025 Northeast Pre-Winter Operations Meeting

November 2024

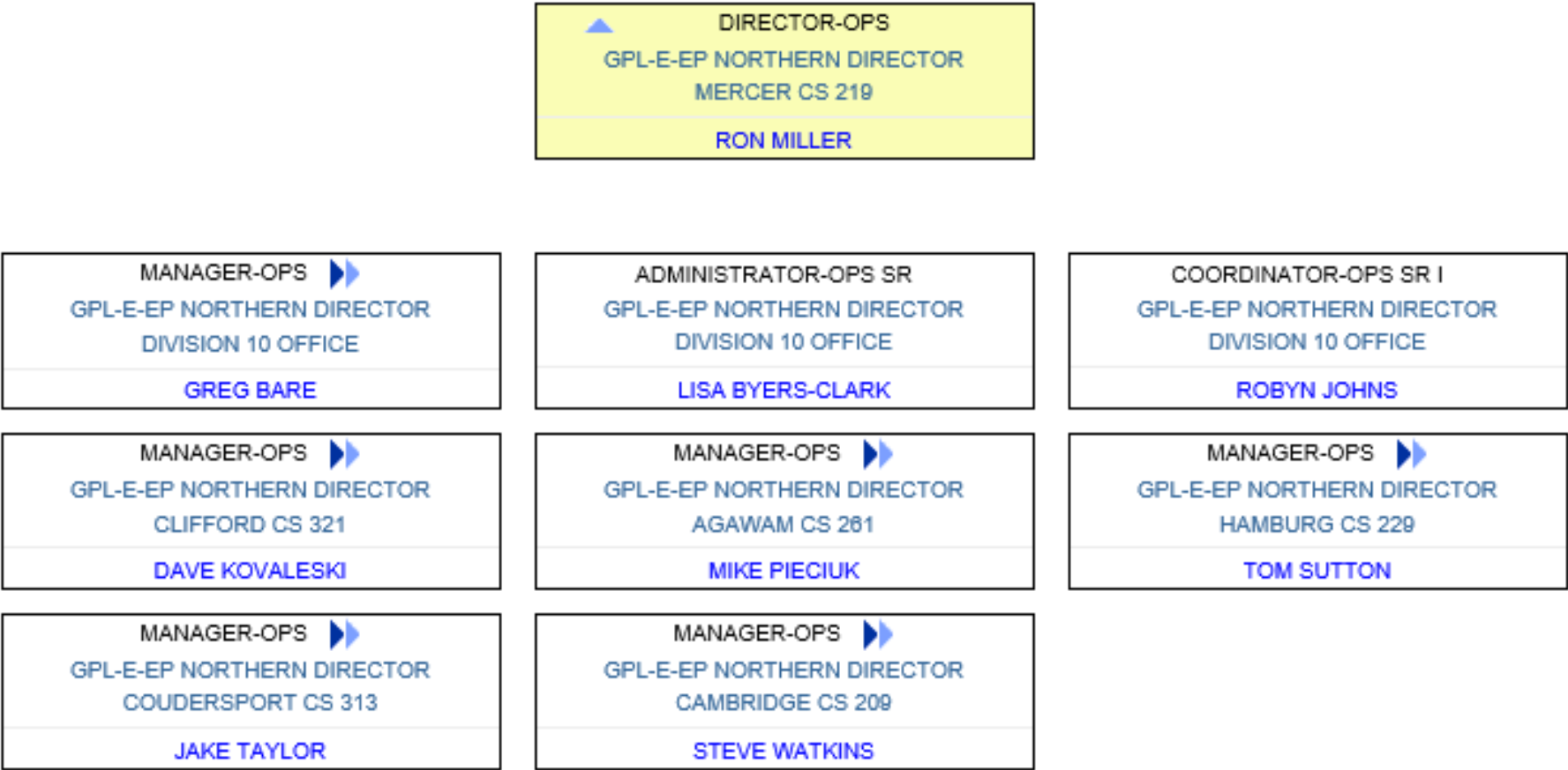


OPERATIONS UPDATE

Operations Organizational Structure



Operations Organizational Structure



2024/2025 Operational Focus and Winter Readiness

Reliable Service –Utilize System Flexibility, Make Further Investments, Refresh Critical Spare Parts Inventory, Monitor & Measure Performance & Take Action to Improve Continuously

Quality Product & Services – Measurement Accuracy (L&U) & Gas Quality Monitoring, Technician Response

Scheduled Maintenance - Maintenance prior to November 1; Compressor Station protective devices, borescope inspections and water wash, Calibration/Testing, Test run units (as applicable), Pipeline and meter station maintenance, Annual Valve Maintenance, Auto-close checks, Regulator and RV devices (slides attached)

Winter Weather Preparation - Inspect & test emergency equipment (i.e., generators, heaters, snow handling equipment, etc.), Contingency planning, Place personnel at key compressor stations, Communicate & coordinate with local customers.

Gas Control Engagement - Daily Morning Call (area, division, system), Gas control to Gas control, Pre-winter meetings with NE

- Segments inspected: 23
- Tools launched and received: 62
- Completed 127 anomaly digs and 10 DA projects
- 60+ Digs scheduled for 2025
- 23 Segment inspections planned for 2025

- We continue to look for innovative ways to reduce customer impact
 - Dent fatigue life analysis
 - Foreign crossing review, etc
 - Continued development of engineering analysis

MAINTENANCE UPDATES

Planning Next Year - June through October for following year maintenance

- Discuss all known outages
 - Pipeline Integrity Management, planned compliance, preventative maintenance, and expansion projects
- Optimization - Consolidate or separate outages to reduce time and capacity impact to the market
- Critical outages for 1st half of coming year posted in the 4th quarter current year
- Full annual outage plan posted in the 1st quarter for the coming year

Current year process

- Weekly and monthly meetings prior to flow month
- Incorporate new outages
- Re-optimize – Continuously consolidate or separate outages to reduce time and capacity impact to the market
- Post monthly and annual outage reports

Outage Postings Location



Shortcuts linked directly on the TGP home page updated regularly

Interstate | Other | Midstream | Informational Postings | Customer Information | Contact Us | Login

Recent Notices (See Info Postings for all notices)

OFO
Jul 29 Imb Warning At Transco Rivervale Lifted
Jul 27 Imbalance Warning At Transco Rivervale
Page: [1] 2

Planned Service Outage
Aug 15 Tgp Outage Impact Report
Aug 14 Mlv 524-2 To Mlv 527-2 New Meter Hot Tap
Page: [1] 2 3

Capacity Constraints(FM)
Aug 15 Ant Pip Restrictions Seg 204 Bh 9-1-24
Aug 08 Ant Del Restriction To Blenville 8-10-24

Other Critical
Aug 15 Restrictions For 08-15-2024 1d3
Aug 15 Restrictions For 08-16-2024 Ec
Page: [1] 2 3

Non-Critical Notices
Aug 15 Successful Bidder - Os #1390
Aug 15 Market Net Pipeline Position Notice
Page: [1] 2 3

Open Seasons (See Info Postings for all notices)

Aug 15 Successful Bidder - Os #1390
Aug 15 Successful Bidder - Os #1390
Aug 13 Request For Proposal
Page: [1] 2
Open Season Documents

Service Programs

No Service Programs

Other Postings

All Notices
Critical Notices
Non-Critical Notices

Operating Information
Outage Impact Report
Maintenance Outages (Excel)

Other Information
Training Documents (DART)
Training Videos (DART)
System Maps

System Constraints (mouse over the map hotspots to view data)

Highlight Locations | Locs At/Near Capacity

Current Gas Day | Tomorrow's Gas Day

LEGEND
Location
Constraints
≤2% Available
No Data

Evening - Aug 16 - Final

DISCLAIMER: The summary information contained in this graphical display is a sampling of points for informational purposes only. This display should not be relied on by shippers in making or confirming commercial transactions. For a listing of available capacity please go to the capacity link under Informational Postings.

Weather Forecast data from weather.gov

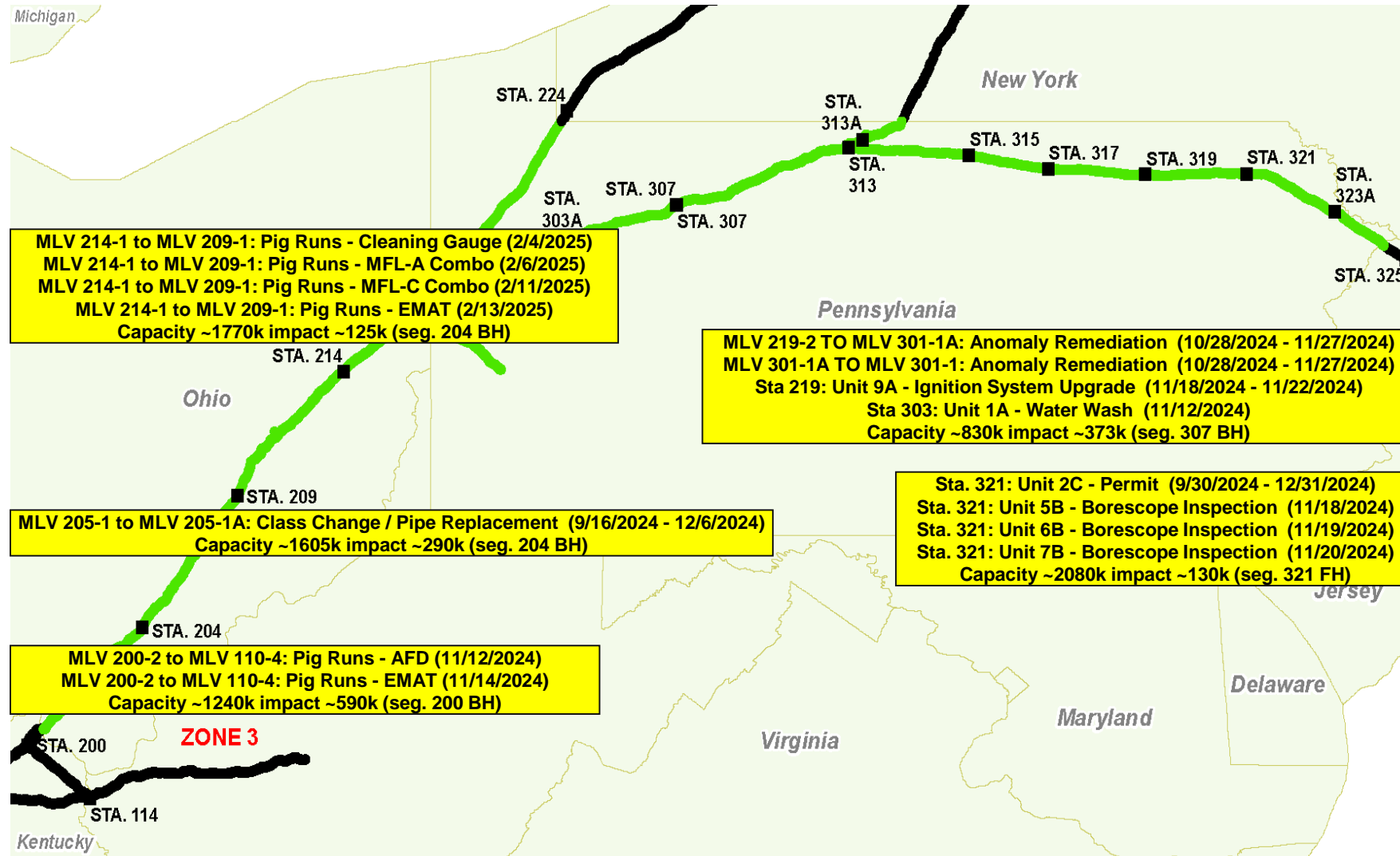
Boston
Buffalo
Hartford
New York
Pittsburgh
Houston
Nashville
New Orleans

On Call Assistance

ROW/Land Inquiries	(800) 781-4152
Scheduling Hotline	(713) 420-4999
Commercial Hotline	(713) 420-4135
Gas Control Hotline	(800) 231-2800
Contract Mgmt. Hotline	(713) 420-3434

Email Us

Zone 4 (November - February)



MLV 214-1 to MLV 209-1: Pig Runs - Cleaning Gauge (2/4/2025)
 MLV 214-1 to MLV 209-1: Pig Runs - MFL-A Combo (2/6/2025)
 MLV 214-1 to MLV 209-1: Pig Runs - MFL-C Combo (2/11/2025)
 MLV 214-1 to MLV 209-1: Pig Runs - EMAT (2/13/2025)
 Capacity ~1770k impact ~125k (seg. 204 BH)

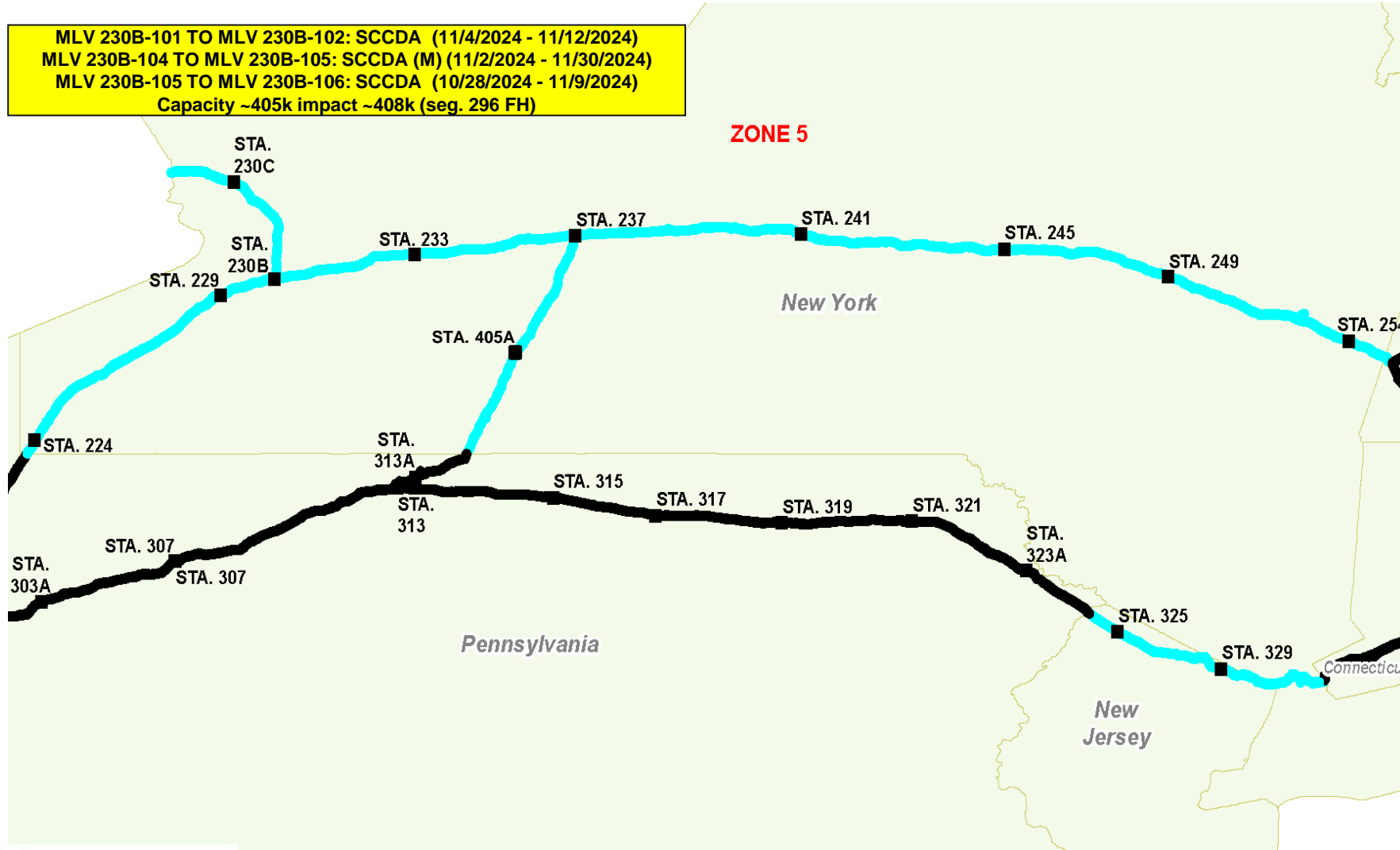
MLV 219-2 TO MLV 301-1A: Anomaly Remediation (10/28/2024 - 11/27/2024)
 MLV 301-1A TO MLV 301-1: Anomaly Remediation (10/28/2024 - 11/27/2024)
 Sta 219: Unit 9A - Ignition System Upgrade (11/18/2024 - 11/22/2024)
 Sta 303: Unit 1A - Water Wash (11/12/2024)
 Capacity ~830k impact ~373k (seg. 307 BH)

MLV 205-1 to MLV 205-1A: Class Change / Pipe Replacement (9/16/2024 - 12/6/2024)
 Capacity ~1605k impact ~290k (seg. 204 BH)

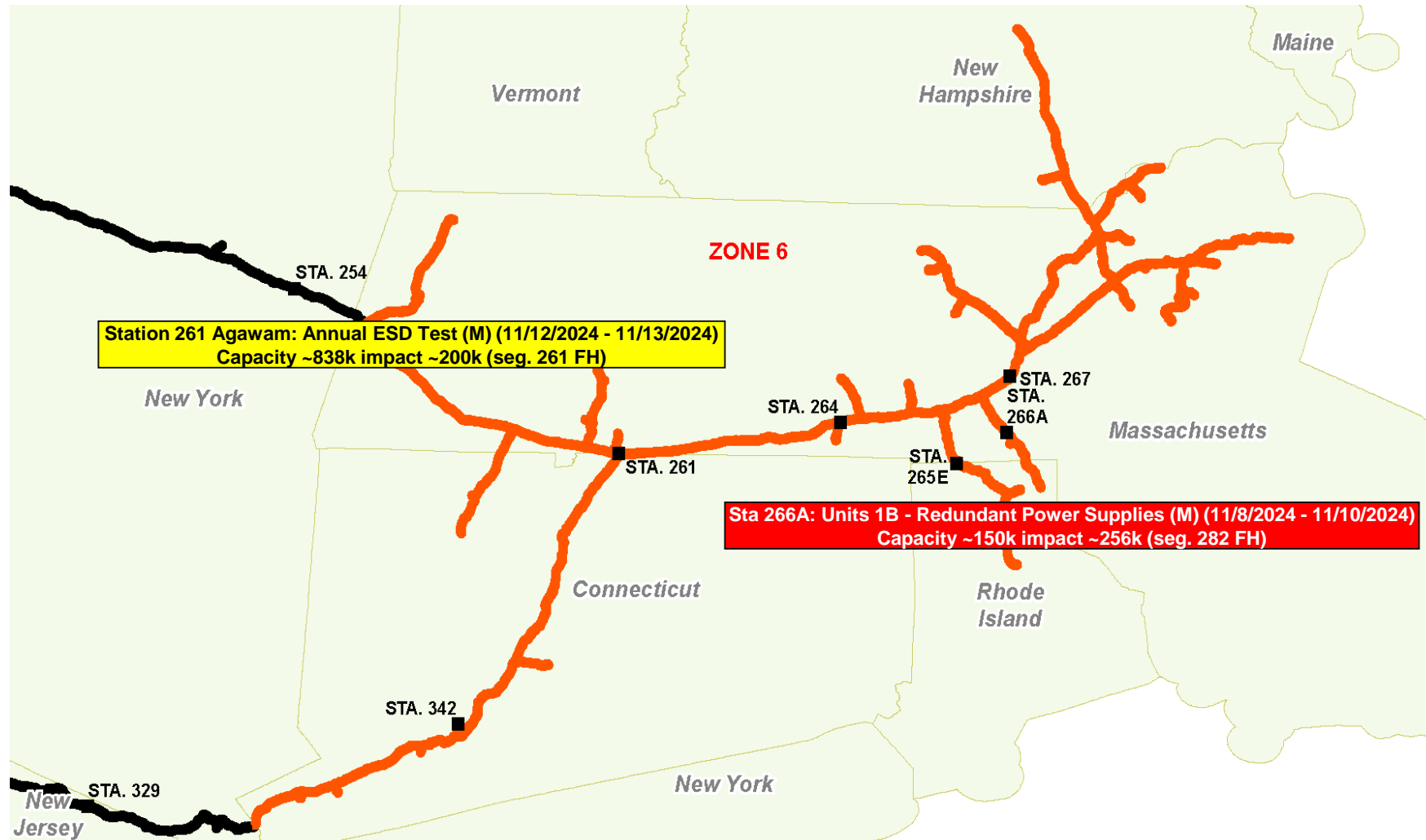
Sta. 321: Unit 2C - Permit (9/30/2024 - 12/31/2024)
 Sta. 321: Unit 5B - Borescope Inspection (11/18/2024)
 Sta. 321: Unit 6B - Borescope Inspection (11/19/2024)
 Sta. 321: Unit 7B - Borescope Inspection (11/20/2024)
 Capacity ~2080k impact ~130k (seg. 321 FH)

MLV 200-2 to MLV 110-4: Pig Runs - AFD (11/12/2024)
 MLV 200-2 to MLV 110-4: Pig Runs - EMAT (11/14/2024)
 Capacity ~1240k impact ~590k (seg. 200 BH)

Zone 5 (November - February)



Zone 6 (November - February)

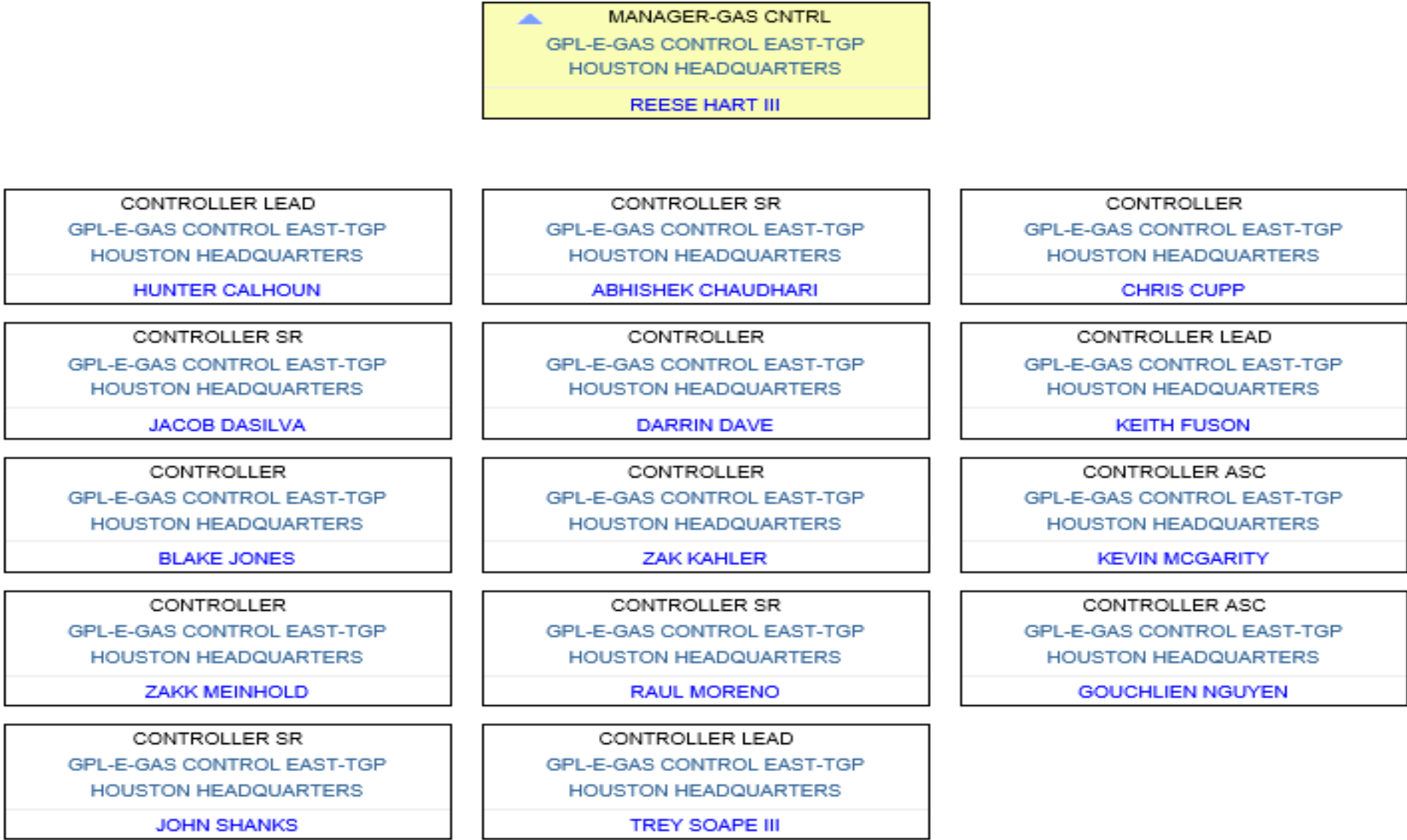


GAS CONTROL ORGANIZATIONAL STRUCTURE

Gas Control Organizational Structure



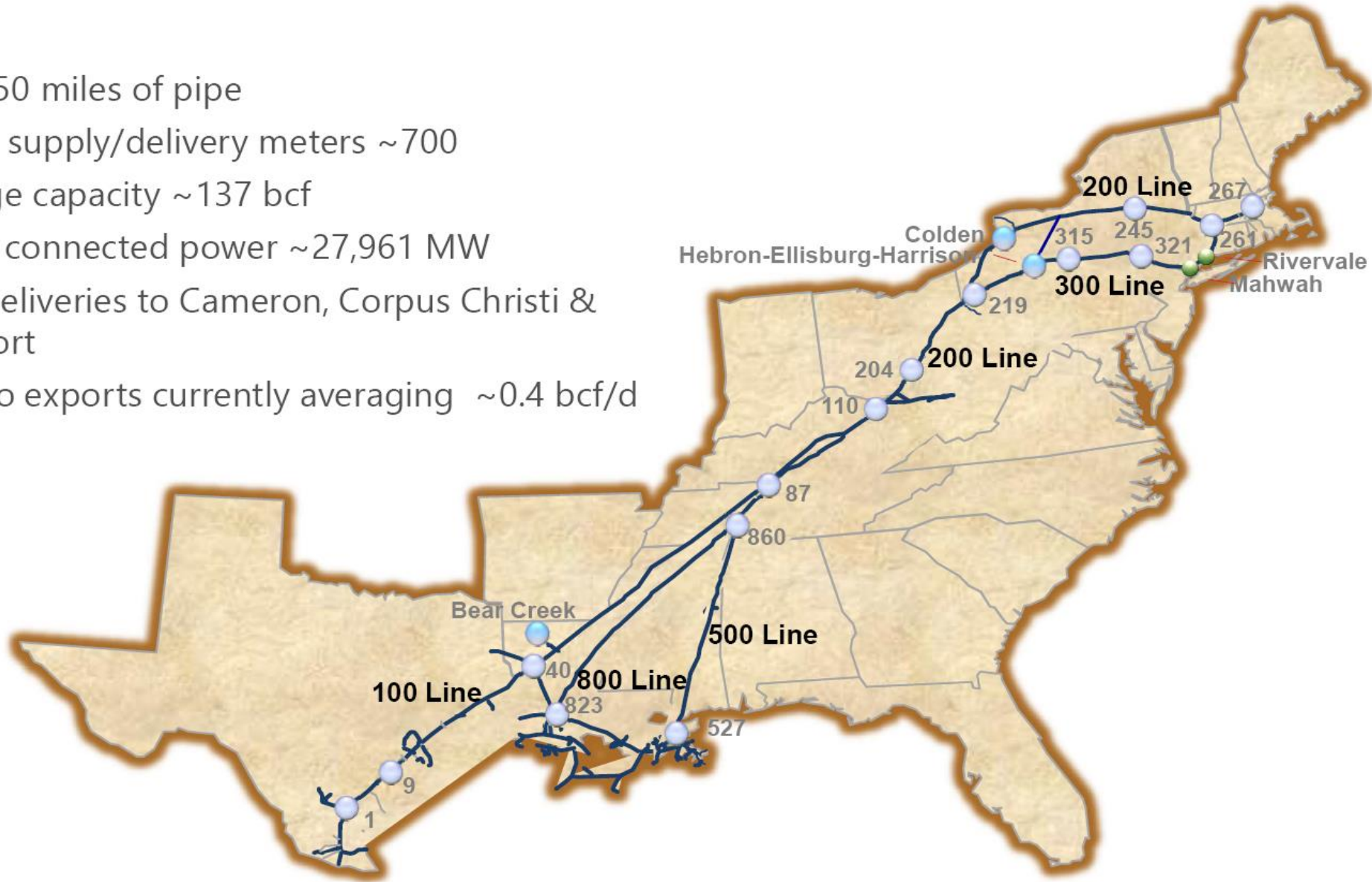
Gas Control Organizational Structure



SYSTEM OPERATIONS OVERVIEW

TGP System Overview

- ~11,750 miles of pipe
- Active supply/delivery meters ~700
- Storage capacity ~137 bcf
- Direct connected power ~27,961 MW
- LNG deliveries to Cameron, Corpus Christi & Freeport
- Mexico exports currently averaging ~0.4 bcf/d



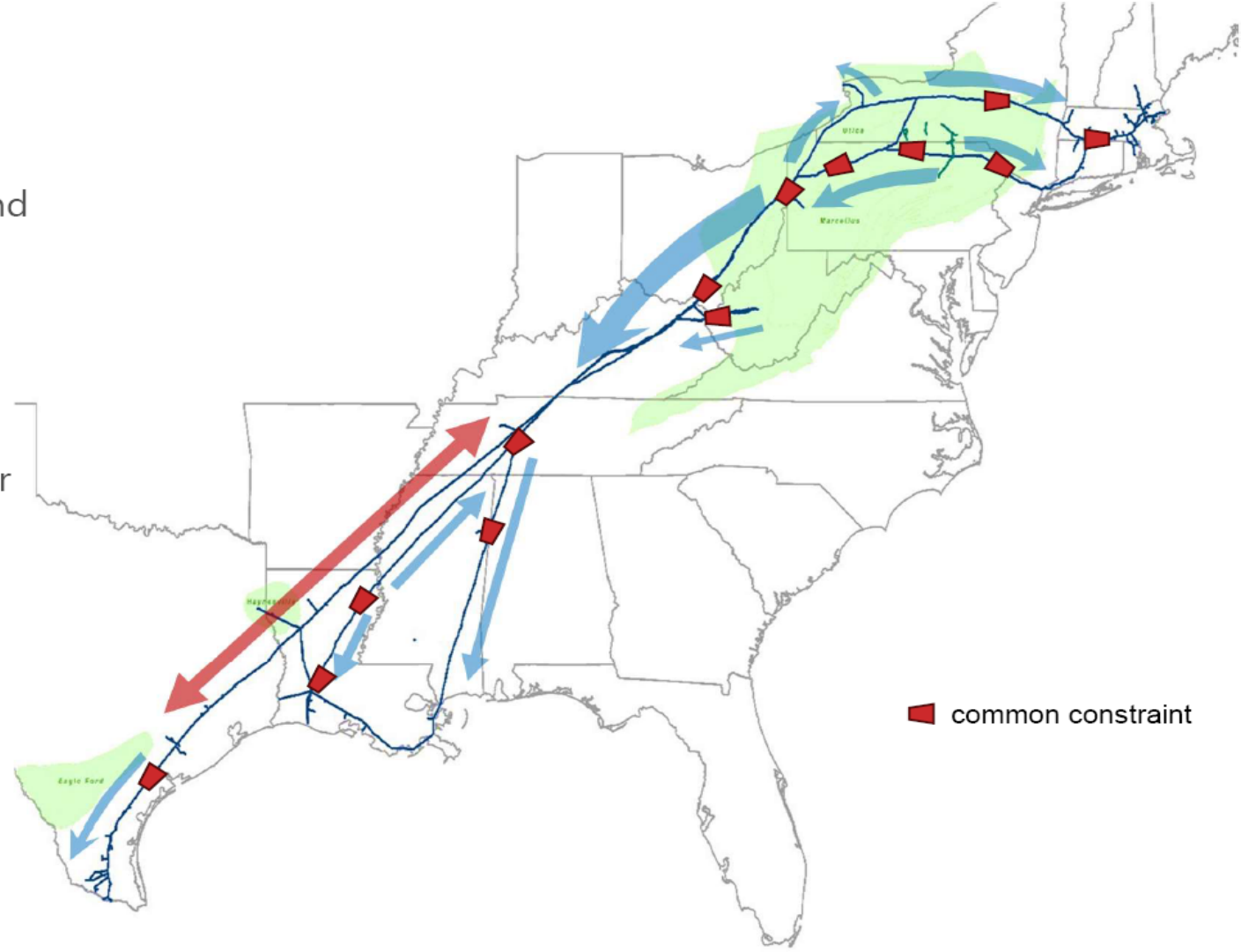
System Flows

Remains the same

- High utilization moving gas from Marcellus/Utica, both South and East
- Traditional bottleneck into New England remains
- Steady exports to Canada

Recent Trends

- Power growth – PJM, SERC in particular
- Growing LNG exports
- Texas becoming a swing market



- SUPPLY

- Permian area continues to be growth markets along Gulf Coast
- Marcellus/Utica production remains strong
- Stagecoach Gas Services continues to improve

- DEMAND

- Steady LNG increase
- Mexico: Flows increased this year compared to last year
- Power: continued gasification of electric grid realized on TGP

SUMMER 2024 LOOK BACK

- Overview

- System wide throughput decreases slightly over summer 2023 (6%)
- Mild winter leaving storage inventories high but slightly down from this time last year
- Maintenance planning and coordination continue to be challenging

- Demand

- System wide throughput down overall due to drop off in system deliveries to pipeline interconnects (-11%); Northeast flows down by 5%
- On system power demand is up slightly (3%); Northeast flows down by 10%
- LDC demand is up by (2%); Northeast flows up by 1%

Summer System Wide Flows



	<u>2022</u>	<u>2023</u>	<u>2024</u>	<u>Change</u>
LDC	1,076	1,073	1,095	+2%
Power	1,785	1,836	1,884	+3%
Pipeline Interconnects	5,343	5,067	4,522	-11%
Mexico	490	596	591	-1%
LNG	1,371	1,311	1,215	-7%
Industrial	47	63	66	+4%
TOTAL	10,112	9,946	9,373	-6%

Volumes are MDth/d

Summer Northeast Market Flows



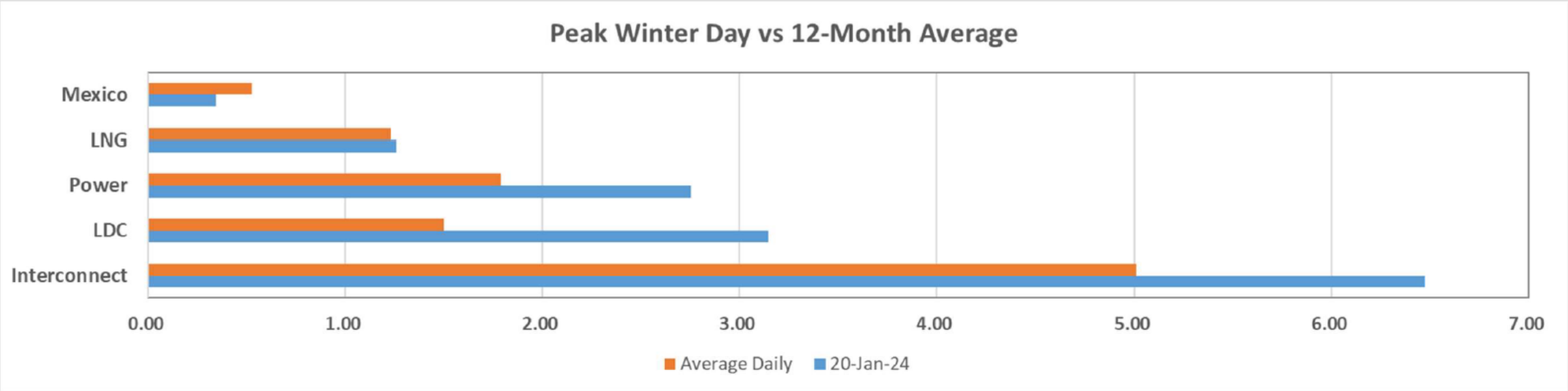
	<u>2022</u>	<u>2023</u>	<u>2024</u>	<u>Change</u>
LDC	871	868	879	+1%
Power	944	992	903	-10%
Pipeline Interconnects	2,996	2,948	2,796	-5%
TOTAL	4,811	4,808	4,578	-5%

Zones 4, 5 and 6
Volumes are MDth/d

WINTER 2023 – 2024 LOOK BACK

Winter Review

- 2023/2024 was similar to prior winter – overall a mild winter System-wide throughput virtually flat year over year averaging ~11.0 MMDth/d for November – March period
- Winter Peak was ~13.71 MMDth on January 20, 2024; 0.7 MMDth greater than prior winter peak
- Power Demand Peak was ~2.95 MMDth/d on January 17, 2024; 0.1 MMDth higher than prior winter peak
- Storage inventory over 70% full exiting winter (3/31) compared to 59% in 2023



Winter 2023-2024 System Wide Flows



	<u>2021-2022</u>	<u>2022-2023</u>	<u>2023-2024</u>	<u>Change</u>
LDC	2,089	1,936	2,030	+4%
Power	1,558	1,627	1,647	+1%
Pipeline Interconnects	5,593	5,835	5,531	-5%
Mexico	565	382	437	+14%
LNG	1,705	1,218	1,282	+5%
Industrial	50	63	71	+14%
TOTAL	11,560	11,061	10,998	-.5%

Volumes are MDth/d

Winter 2023-2024 Northeast Market Flows



	<u>2021-2022</u>	<u>2022-2023</u>	<u>2023-2024</u>	<u>Change</u>
LDC	1,729	1,610	1,666	+3%
Power	829	937	802	-16%
Pipeline Interconnects	3,209	3,152	3,231	+2%
TOTAL	5,767	5,699	5,699	0%

Zones 4, 5 and 6
Volumes are MDth/d

- Anticipate continued high utilization system wide
 - Winters won't stay mild forever
 - Northeast segments will continue to be constrained during winter
 - LNG demand is high utilization with no seasonality – increasing load factor in southern segments
 - Expansion projects add additional supply and market to the system

- Storage key to providing system flexibility

- Continued focus on maintenance planning to remain safe and reliable while limiting customer impacts as much as possible

SCHEDULING UPDATE

Transportation Storage Services

Organizational Structure



Eastern Region Scheduling Department

<p>Gina Mabry <i>VP—Pipeline Administration</i> Phone: (713) 420-3685 Cell: (281) 744-8666 Gina_Mabry@kindermorgan.com</p>	<p>Katie Cornutt <i>Director—Pipeline Scheduling</i> Phone: (713) 420-5648 Cell: (407) 902-8027 Katlynn_Cornutt@kindermorgan.com</p>
<p>Adam Harris <i>Manager—Pipeline Scheduling</i> Phone: (713) 420-2672 Cell: (281) 389-0024 Adam_Harris@kindermorgan.com</p>	<p>Cathy Soape <i>Manager—Pipeline Scheduling</i> Phone: (713) 420-3814 Cell: (713) 922-5083 Cathy_Soape@kindermorgan.com</p>

Tennessee Gas Pipeline Scheduling Team

DSRs		WEARs
<p>Walker Agnew, Jr. <i>Pipeline Scheduler II</i> (713) 420-6059 ICE: wagnew Walker_Agnew@kindermorgan.com</p>	<p>Susan Lopez <i>Pipeline Scheduler Sr. II</i> (713) 420-3724 ICE: slopez3 Susan_Lopez@kindermorgan.com</p>	<p>Mandey Allen <i>Pipeline Scheduler Sr. II</i></p>
<p>Brooke Ardoin <i>Pipeline Scheduler II</i> (713) 420-1959 ICE: bardoin Brooke_Ardoin@kindermorgan.com</p>	<p>Heather Mercado <i>Pipeline Scheduler Sr. I</i> (713) 420-4639 ICE: hamercado Heather_Mercado@kindermorgan.com</p>	<p>Ginger Bryan <i>Pipeline Scheduler Sr. II</i></p>
<p>Lauren Holcombe <i>Pipeline Scheduler Asc</i> (713) 420-6281 ICE: laholcombe Lauren_Holcombe@kindermorgan.com</p>	<p>Erin Mortimer <i>Pipeline Scheduler Sr. II</i> (713) 420-5878 ICE: emortimer1 Erin_Mortimer@kindermorgan.com</p>	<p>Nicole Lang <i>Pipeline Scheduler Sr. II</i></p>
<p>Mark Ferguson <i>Pipeline Scheduler Asc</i> (713) 420-2534 ICE: marferguson Mark_Ferguson@kindermorgan.com</p>	<p>Deb Shipman <i>Pipeline Scheduler Lead</i> (713) 420-3088 ICE: dshipman1 Deb_Shipman@kindermorgan.com</p>	<p>Jill Overman <i>Pipeline Scheduler Sr. II</i></p>
<p>Scott Holdener <i>Pipeline Scheduler Sr. I</i> (713) 420-2237 ICE: scoholdener Scott_Holdener@kindermorgan.com</p>	<p>Carla Vannoy <i>Pipeline Scheduler Sr. II</i> (713) 420-8048 ICE: cvannoy Carla_Vannoy@kindermorgan.com</p>	<p>Norma Villarreal <i>Pipeline Scheduler Sr. II</i></p>
		<p>Taeko Yoneyama <i>Pipeline Scheduler II</i></p>

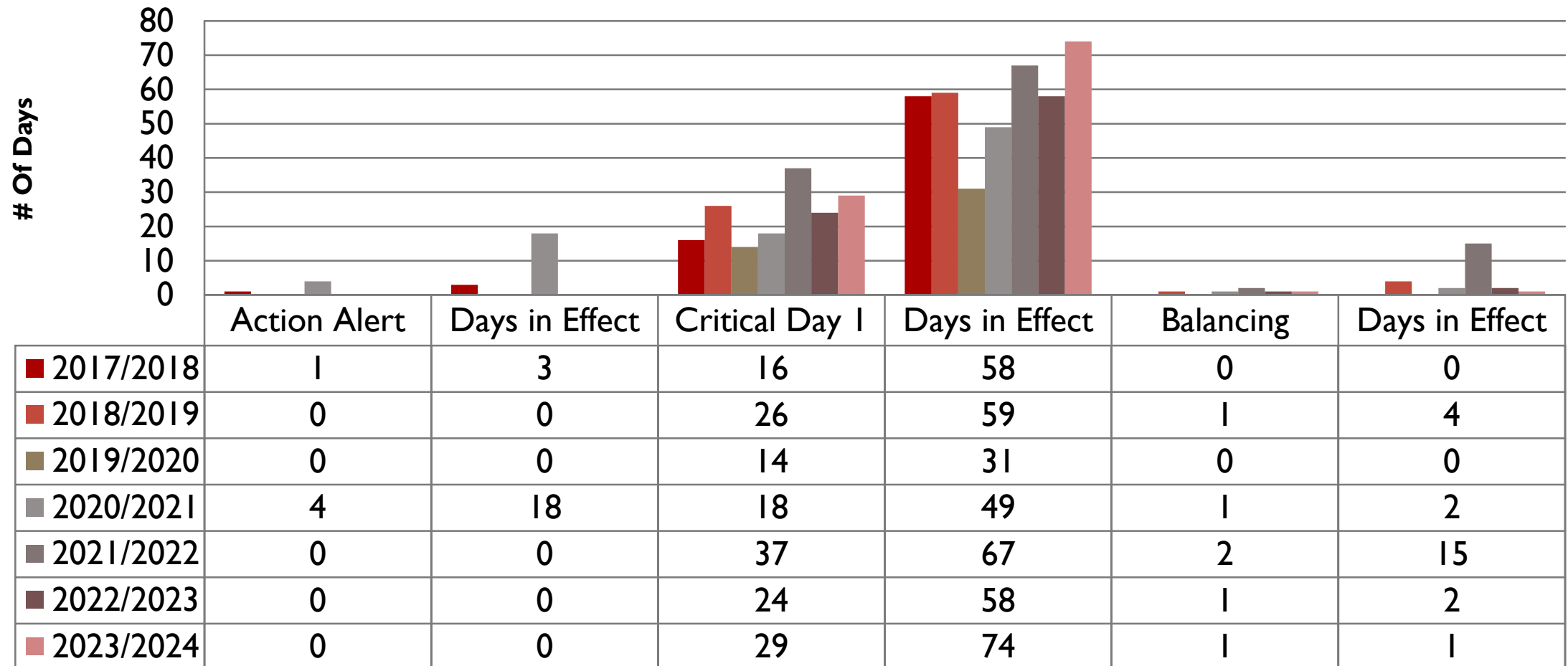
Nominations and Scheduling Contact Information: (713) 420-4999 / TGPTransSvc@kindermorgan.com

- System Considerations for Winter
 - More gas moving toward the Northeast
 - OFOs are likely for Northeast area for over-takes and under-deliveries
 - Scheduled maintenance coming to an end
 - Work with customers as operations allow on any remaining maintenance
 - Storage Utilization
 - Protect firm storage
 - Daily System flexibility to manage ***scheduled*** payback
 - Gas Control and Scheduling evaluate payback at each cycle to determine availability
 - TGP encourages customers to nominate payback in an effort to minimize customer cash out exposure when operational conditions allow

WINTER RESTRICTIONS

Restriction Point Highly Utilized TGP Paths	Percentage Days Restricted (November - March)	Percentage Days Restricted (November - March)	Percentage Days Restricted (November - March)	Percentage Days Restricted (November - March)	Percentage Days Restricted (November - March)	Percentage Days Restricted (November - March)
	2018/2019	2019/2020	2020/2021	2021/2022	2022/2023	2023/2024
Sta. 200/204	0%	0%	38%	10%	0%	76%
Sta. 245	100%	100%	100%	99%	100%	100%
Sta. 261	85%	63%	54%	76%	70%	59%
Sta. 267	2%	0%	0%	0%	0%	0%
MLV 268	9%	3%	5%	36%	27%	13%
MLV 273	99%	70%	100%	100%	100%	100%
Sta. 315 BH	61%	37%	100%	98%	100%	100%
Sta. 321	81%	100%	100%	99%	100%	100%
MLV 355 BH	34%	16%	28%	40%	55%	52%
Sta. 1 BH	83%	17%	4%	4%	0%	13%
Sta. 9 BH	31%	55%	13%	1%	7%	0%
Mahwah	98%	100%	100%	5%	93%	96%
Rivervale	88%	6%	0%	0%	19%	1%

WINTER SEASON OFOS – ZONES 4, 5 AND 6



SUMMER RESTRICTIONS

Restriction Point Highly Utilized TGP Paths	Percentage Days Restricted (April – October)	Percentage Days Restricted (April – October)	Percentage Days Restricted (April - October)	Percentage Days Restricted (April - October)	Percentage Days Restricted (April - October)	Percentage Days Restricted (April - October)	Percentage Days Restricted (April - October)
	2018	2019	2020	2021	2022	2023	2024
Sta. 200/204	67%	12%	44%	69%	69%	94%	47%
Sta. 245	98%	83%	94%	100%	100%	99%	100%
Sta. 261	49%	1%	14%	14%	14%	20%	20%
Sta. 267	10%	0%	0%	0%	0%	0%	0%
MLV 268	12%	0%	0%	0%	0%	0%	0%
MLV 273	17%	16%	66%	100%	100%	100%	100%
Sta. 315 BH	99%	70%	99%	96%	96%	98%	99%
Sta. 321	99%	63%	79%	100%	100%	99%	100%
MLV 355 BH	79%	23%	17%	74%	74%	10%	8%
Sta. 1 BH	80%	13%	17%	43%	43%	5%	1%
Sta. 9 BH	58%	22%	10%	5%	5%	4%	7%
Mahwah	50%	98%	89%	98%	98%	58%	95%
Rivervale	58%	68%	0%	1%	1%	0%	1%

COMMERCIAL UPDATE

Park & Loan – Term (PAL-D)
ROPD & ROLD

Attributes:

- Lowest form Interruptible Services
- Invoiced on Total Scheduled volume

Offerings:
Term
Balancing

Park & Loan – Term (PAL-T)
ROPT & ROLT

Attributes:

- Highest form Interruptible Services
- Invoiced on Total Quantity (TQ)

Offerings:
Term
Balancing
Operational

Term

- Based on Market Price
- Cash, Balmo and Forwards
- Timing, Location and quantity based on operational flexibility

Balancing

- Acts like synthetic storage
- Price varies based on turns, locations and term
- Yearly and Monthly terms

Operational

- Contracted on a customer needs basis as operational flexibility allows



Commercial Optimization Organization



On Call Assistance

- Commercial Hotline** (713) 420-4135
- Scheduling Hotline** (713) 420-4999
- Gas Pipeline Control Hotline** (800) 231-2800
- Contract Mgmt. Hotline** (713) 420-3434
- DART Non-Security Issues** (713) 420-4999

Lakann James

Britton Burr

Kevin Cofer

Jermiah Ortiz

Scott Minear

Greg Pollard

Allison Kaczynski

Aaron O'Reilly

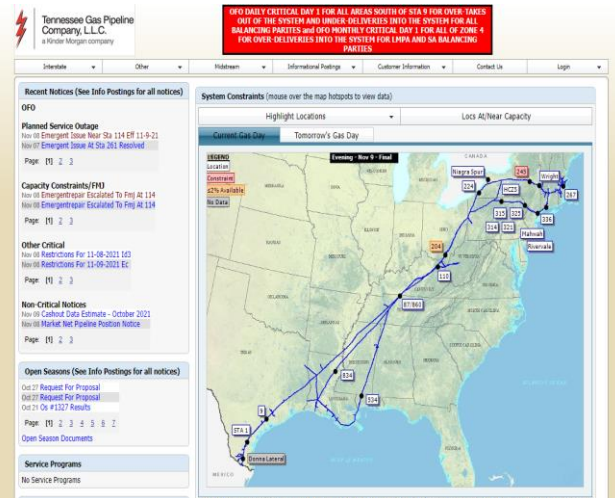
Chris Brown

Adrienne Reid

Chris Lawson

Pipelines marketed daily by the Bidroom Group

- Tennessee Gas
- Stagecoach Storage
- Arlington Storage
- MEP
- KMLP
- SNG



Other Postings

- All Notices
 - Critical Notices
 - Non-Critical Notices
- Operating Information
 - Outage Impact Report
 - Maintenance Outages (Excel)
- Other Information
 - Training Documents (DART)
 - Training Videos (DART)
 - System Maps

Gas Control

24 hour and emergency
800-231-2800

Reese Hart – Manager
713-420-4774
Cell – 832-248-2937

Layne Sanders – Director
713-420-5024
Cell – 832-563-5024

Brian Merchant - VP
713-420-5867
Cell – 713-206-0590

Transportation and Storage

24-hour Scheduling Hotline
713-420-4999

Cathy Soape – Manager
713-420-3814
Cell – 713-922-5083

Adam Harris – Manager
713-420-2672
Cell – 281-389-0024

Katie Cornutt - Director
713-420-5648
Cell – 407-902-8027

Gina Mabry – VP
713-420-3685
Cell – 281-744-8666

Commercial/Marketing

Commercial Hotline
713-420-4135

Jim McCord – Account Director
713-420-5611
Cell - 832-655-4043

Ruth Hearn – Director, Acct Svcs
713-420-3881
Cell- 281-352-7975

Lakann James – Director, Optimization
713-420-4882
Cell – 405-613-8281

Mark Wilson – VP
713-420-7205
Cell – 205-447-2589

Field Operations

Ron Miller– Director (Northeast)
724-662-6422
Cell – 716-378-1840

Greg Bare – Manager (Div 10)
860-763-6034
Cell – 860-966-8577

Mike Pieciuk – Manager (Northeast)
413-821-2022
Cell – 203-441-2834

Jess Coleman– VP Ops
713-420-4501
Cell – 701-648-9361