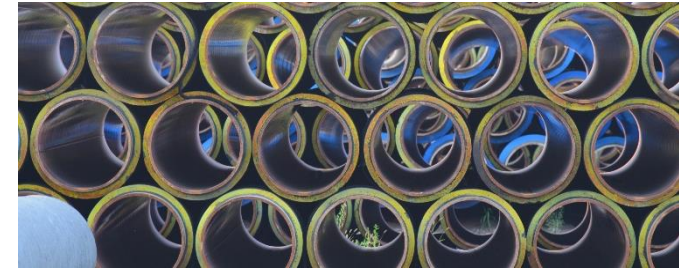




Delivering Energy to Improve Lives

Northeast Summer Operations Meeting

June 2021



- Operations Update
- TGP Gas Control Overview
- 2020/2021 Winter Lookback
- Planned Summer Maintenance
- Scheduling Review
- Commercial Update

Mitch Myer
Manager, Operations- New England Area

Ganesh Venkateshan
Manager, TGP Gas Control

Cathy Soape Hutton
Manager, TGP Trans and Storage Svc

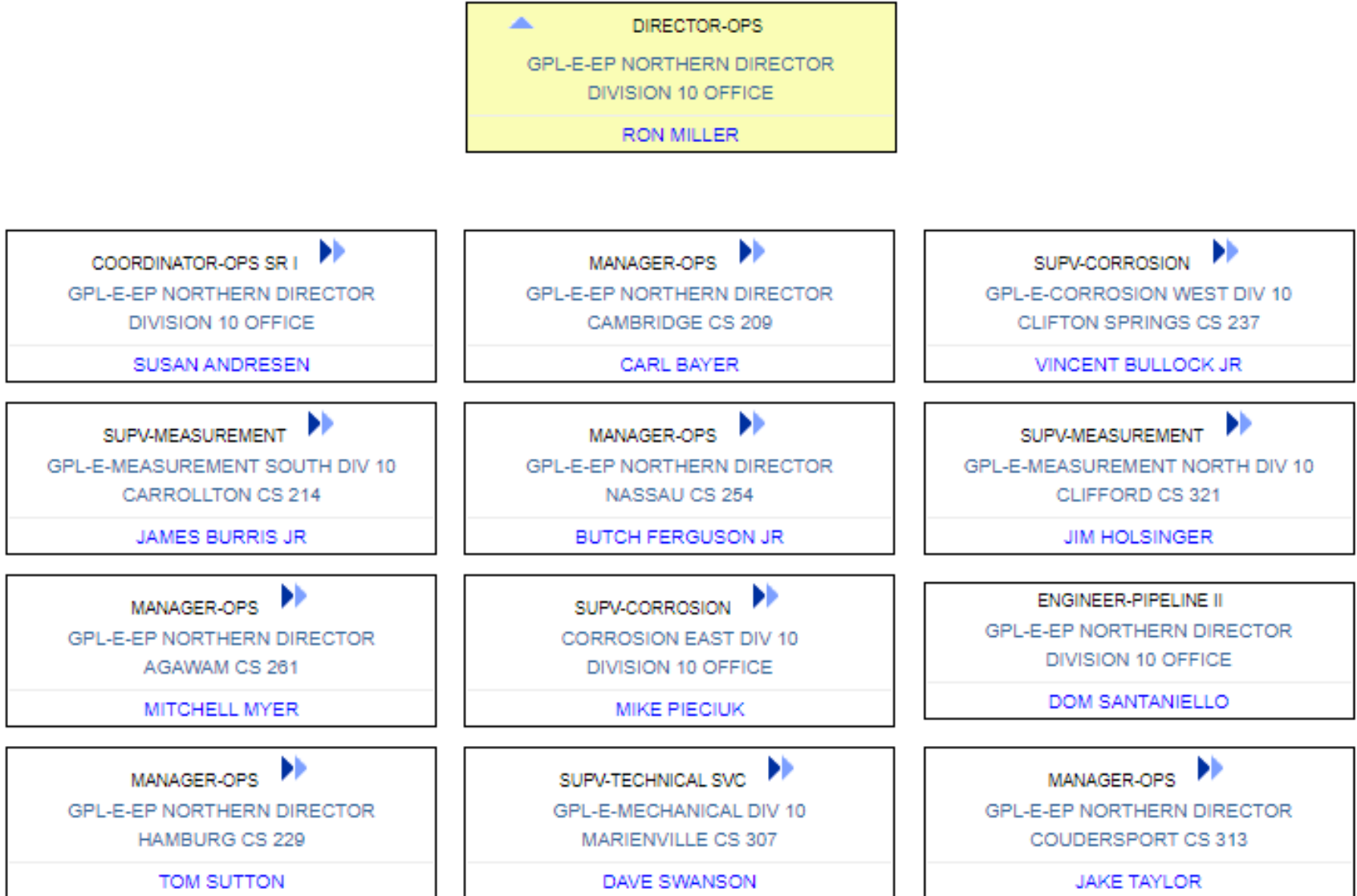
Jim McCord
Manager, TGP Marketing

OPERATIONS UPDATE

Operations Organizational Structure



Operations Organizational Structure



- Scheduled Maintenance - all maintenance by early November
- Winter Weather Preparation
 - Proven effective
- Contingency plans implemented
 - Compressor station
 - Pipeline and meter station

2021 Projects offer significant upside

- Working to improve our ESG metrics
 - Valve replacements
 - More coordinated approach for reducing pressure in pipeline segments
 - Finishing effort to replace two aging turbines with a state of the art machine
 - Net emissions reduction
 - Net noise reduction
- Reliability boosting additions
- Noticeability reductions

- Inline Inspection
 - Continuing with robust ILI program – 3 of 5 segments inspected in 2021 to date
 - ILI Tool Selection – Technology continues to improve
 - Goal is still to receive inspection results early to avoid impactful outages during the heating season
- Remediation
 - Technological improvements
 - Dent fatigue life analysis
 - Foreign crossing review, etc.
 - Continued development of engineering analysis
- Mega Rule
 - Running expanded suite of ILI
 - Many pressure tests coming over the next several years

Construction Project Initiation Process

Submitting and requesting information for Upgrade Projects



- Initial requests should be sent to KMEncroachmentsNorth@kindermorgan.com
 - If we receive requests outside of this address, we'll forward for appropriate handling
- Simple checklist of information to include
- Once in receipt, we:
 - Will offer assistance with engineering if needed/possible
 - Will participate in field assessments to finalize and agree on work plans
- Interconnect Agreements

Construction Project Initiation Process Cont.

Submitting and requesting information for Upgrade Projects



Interconnect Information Form

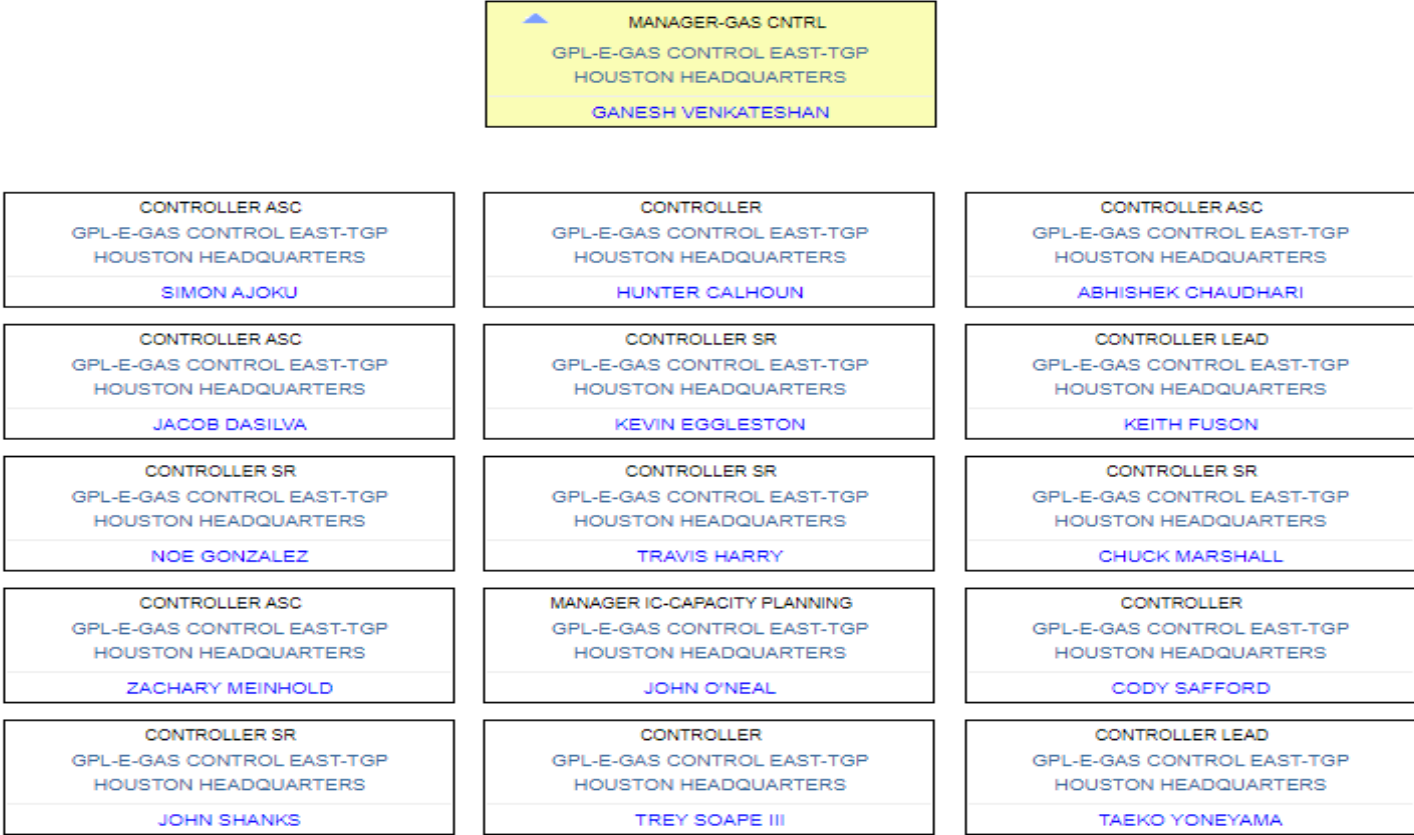
KINDER MORGAN		INTERCONNECT INFORMATION FORM	
Requesting Company		Date	
Reason for Work			
Existing Asset Information			
KM Pipeline		KM Receipt or KM Delivery	
Meter Station Name		Requested In-Service	
Street Address		City, State	
Lat/Long		Agreement Available?	
Requester Information			
Name & Title			
Phone			
Email			
Project Information			
Ownership Demarcation Location Change?		Work Proposed Inside KM Buildings?	
Work Include Increase in Flows?		Work Include New Buildings?	
Work Include Changes to Pressures or Temperatures?		Outage Acceptable for Work, if Required?	
Support Documentation/Information			
Please Provide the Following (as Available):			
Scope of Work			
Site Drawings			
Expected Flow Conditions			
Existing Agreement			
Other Support Documentation			
Remarks			

GAS CONTROL

Gas Control Organizational Structure

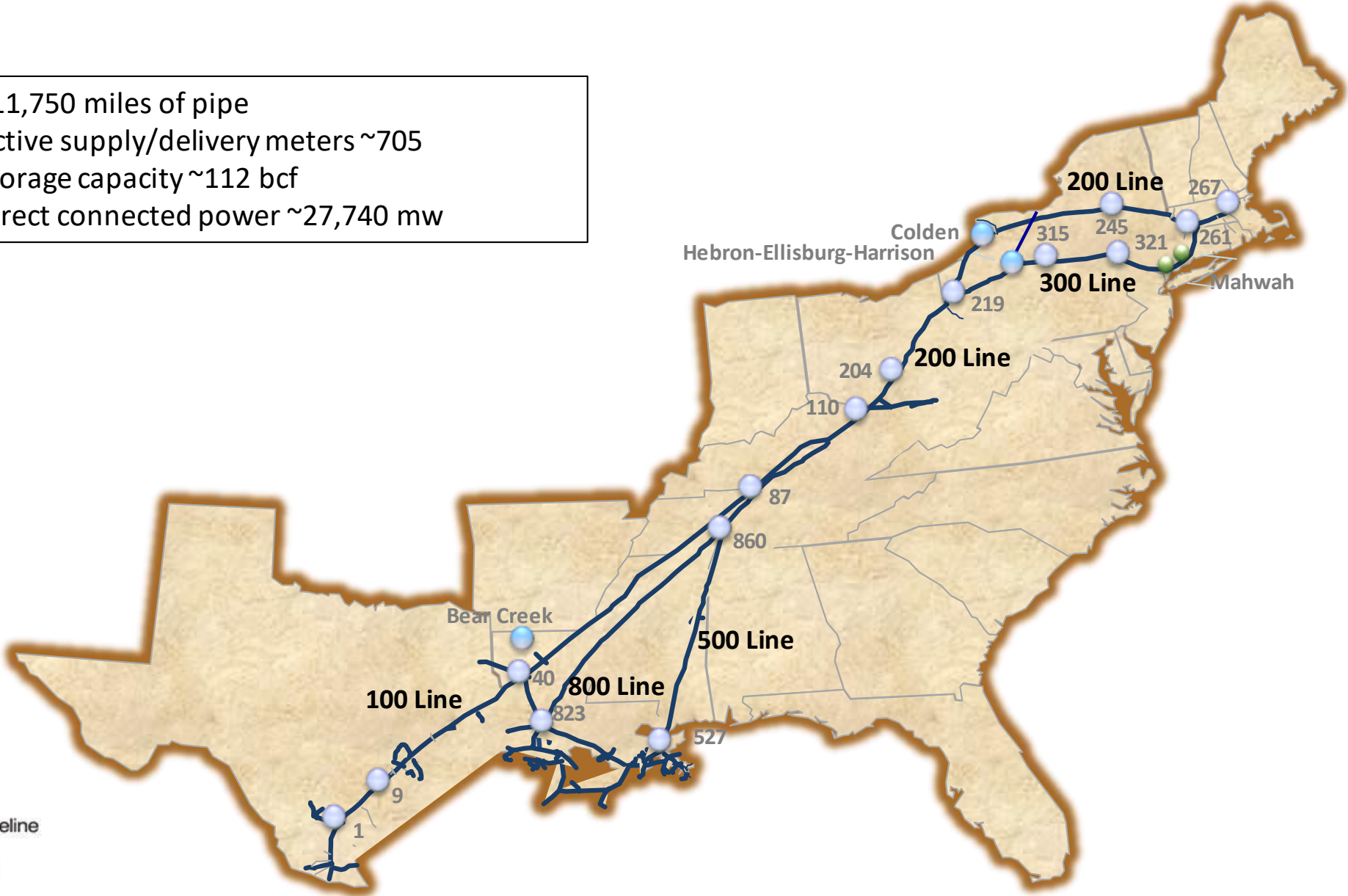


Gas Control Organizational Structure



TGP System Map

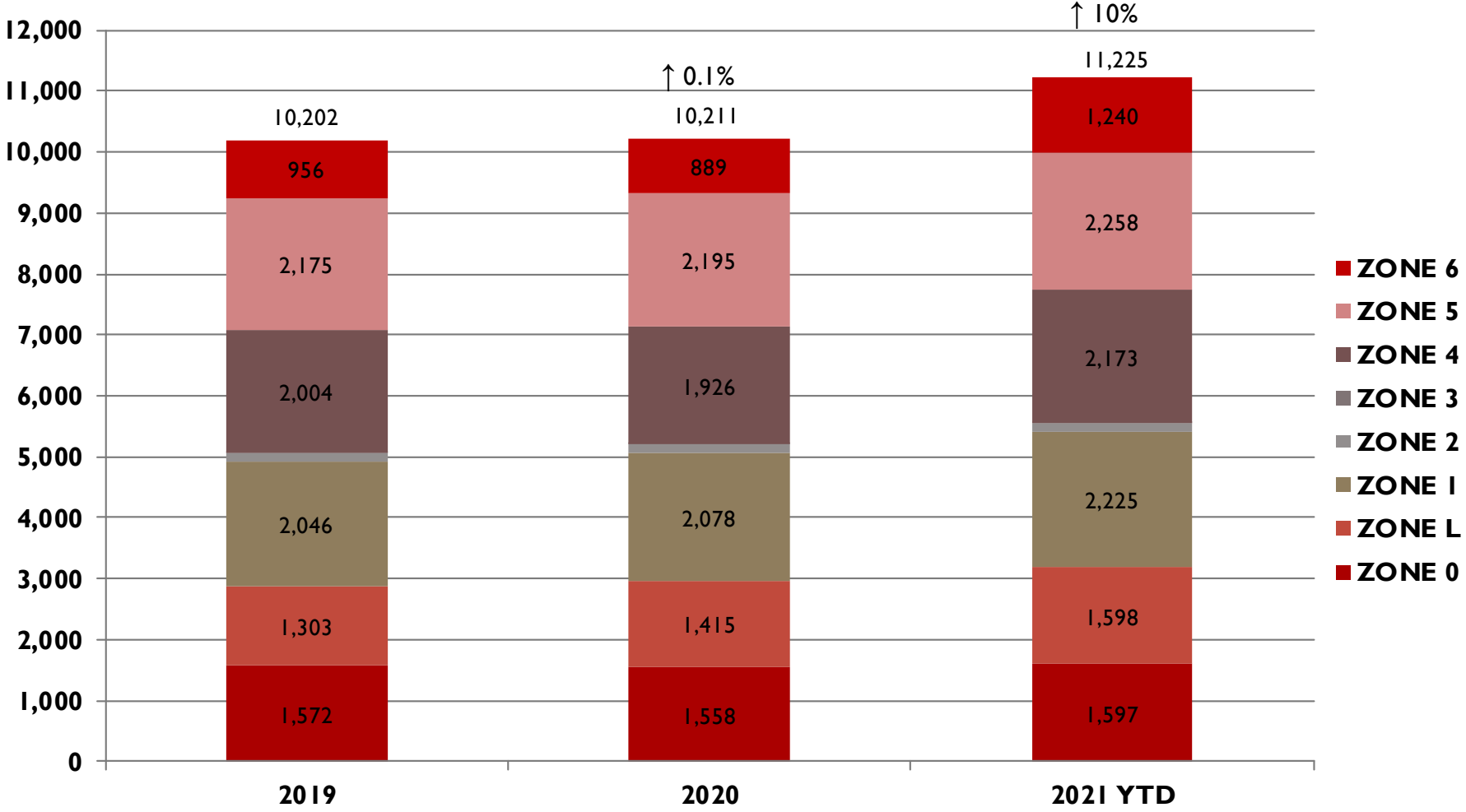
- ~11,750 miles of pipe
- Active supply/delivery meters ~705
- Storage capacity ~112 bcf
- Direct connected power ~27,740 mw



WINTER 2020 – 2021 LOOK BACK

- Overview
 - Seasonal Winter Demand
 - System-wide throughput increased 2% compared to previous winter
 - Storage Inventories levels were at anticipated levels and lower than last year levels
 - System Wide Peak Day was ~12.48 Bcf/d on February 12, 2021
 - Exports to Mexico decreased 9% compared to previous winter
 - Stronger power loads in the Northeast compared to prior years.
- Supply
 - Supply in Zone 4 consistent as previous Winter
 - Supply changes were demand related at Dracut/Distrigas
- Operational Challenges

TGP System Wide Throughput



*Through April

Winter System Wide Flows

	<u>2018-2019</u>	<u>2019-2020</u>	<u>2020-2021</u>	<u>Change</u>
LDC	2,120	2,030	2,092	+3%
Power	1,105	1,286	1,390	+8%
Interconnects	5,840	5,494	5,312	-3%
Mexico	918	890	807	-9%
LNG	108	1,145	1,490	+30%
Industrial	56	47	50	+6%
TOTAL	10,146	10,892	11,141	+2%

Volumes are MDth/d

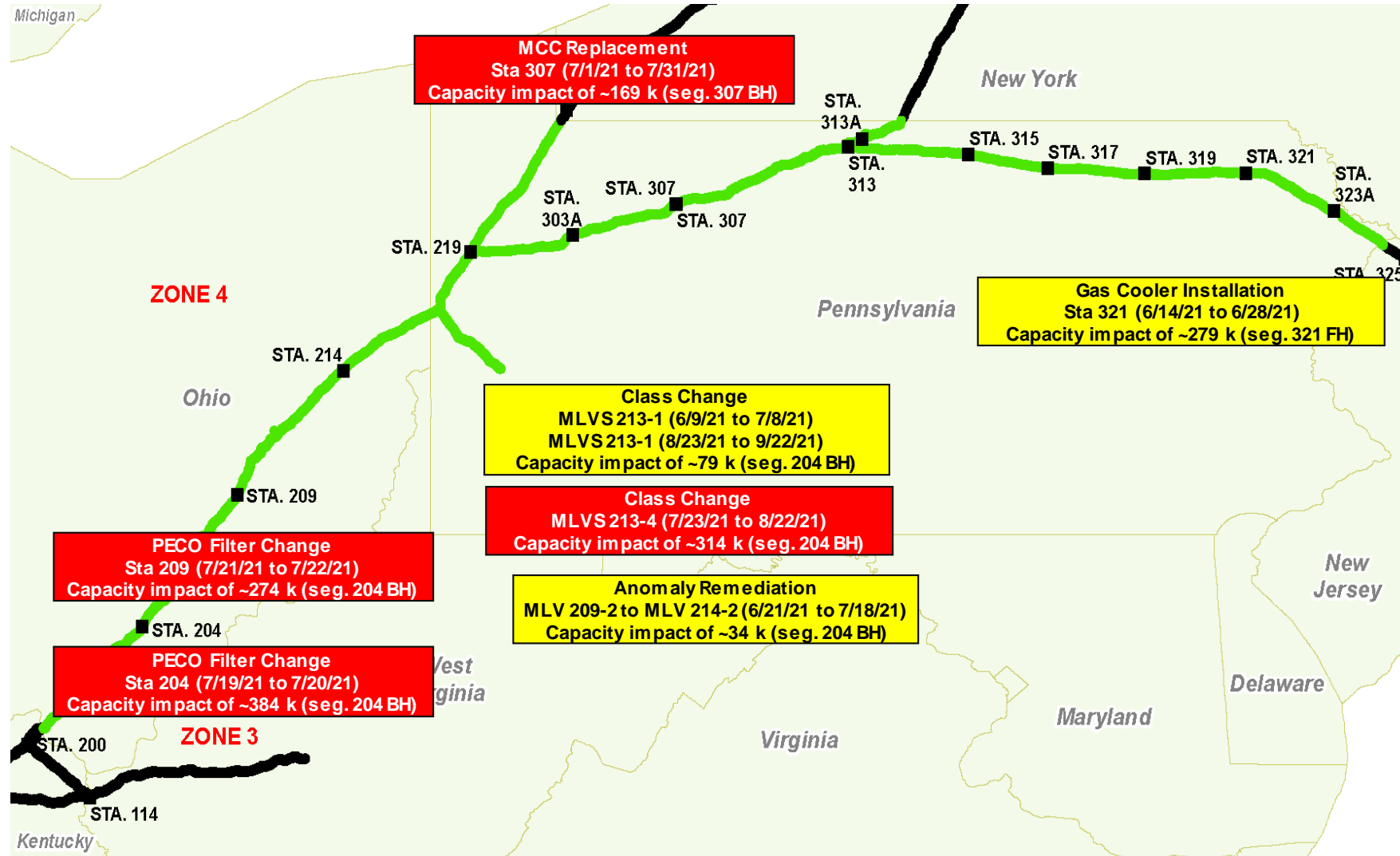
Winter Northeast Flows

	<u>2018-2019</u>	<u>2019-2020</u>	<u>2020-2021</u>	<u>Change</u>
LDC	1,582	1,516	1,564	+3%
Power	247	298	333	+12%
Pipeline Interconnects	1,526	1,520	1,487	-2%
TOTAL	3,354	3,334	3,385	+1.5%

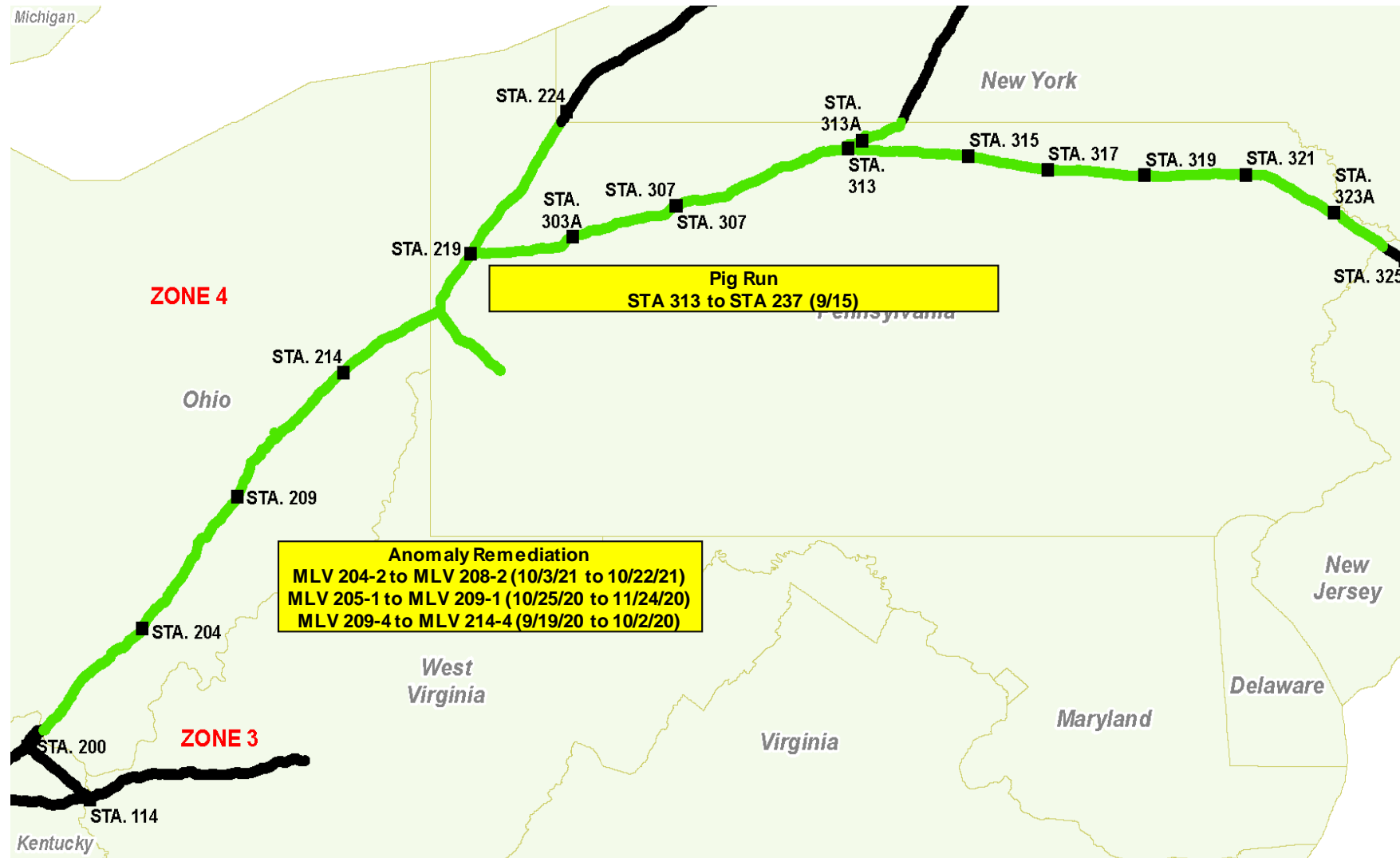
Volumes are MDth/d

PLANNED SUMMER MAINTENANCE

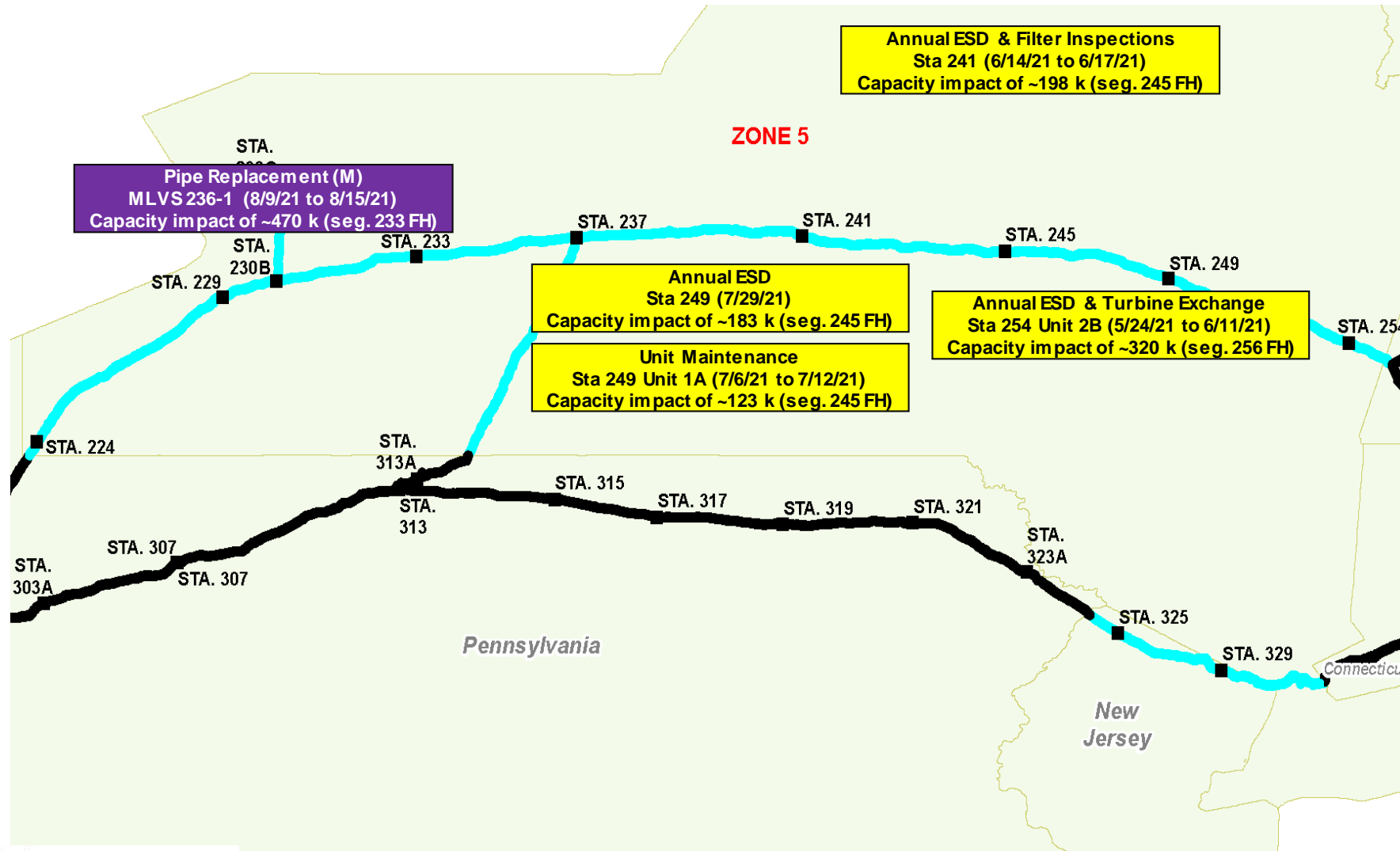
Zone 4 (May - August)



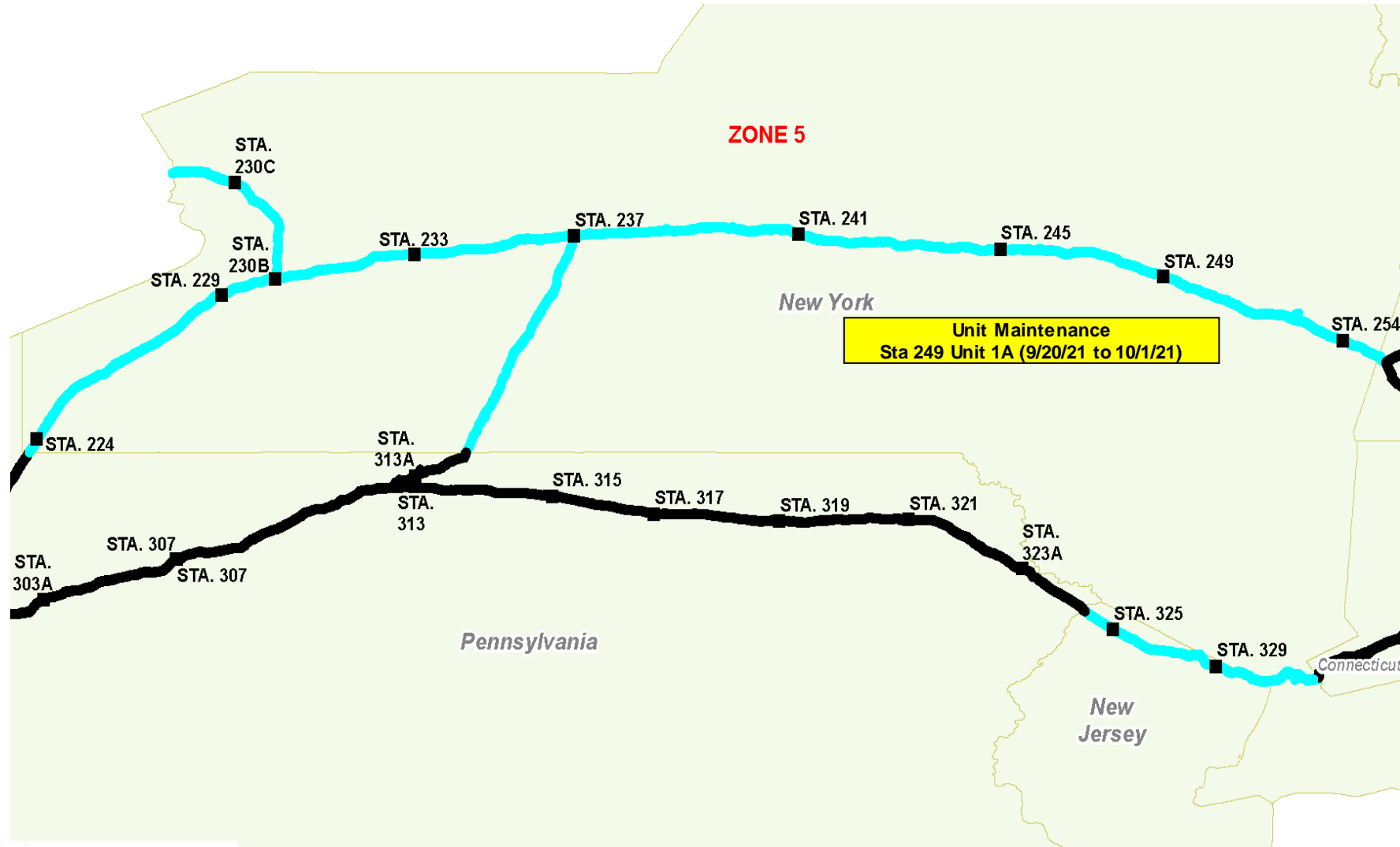
Zone 4 (Future Significant Outages)



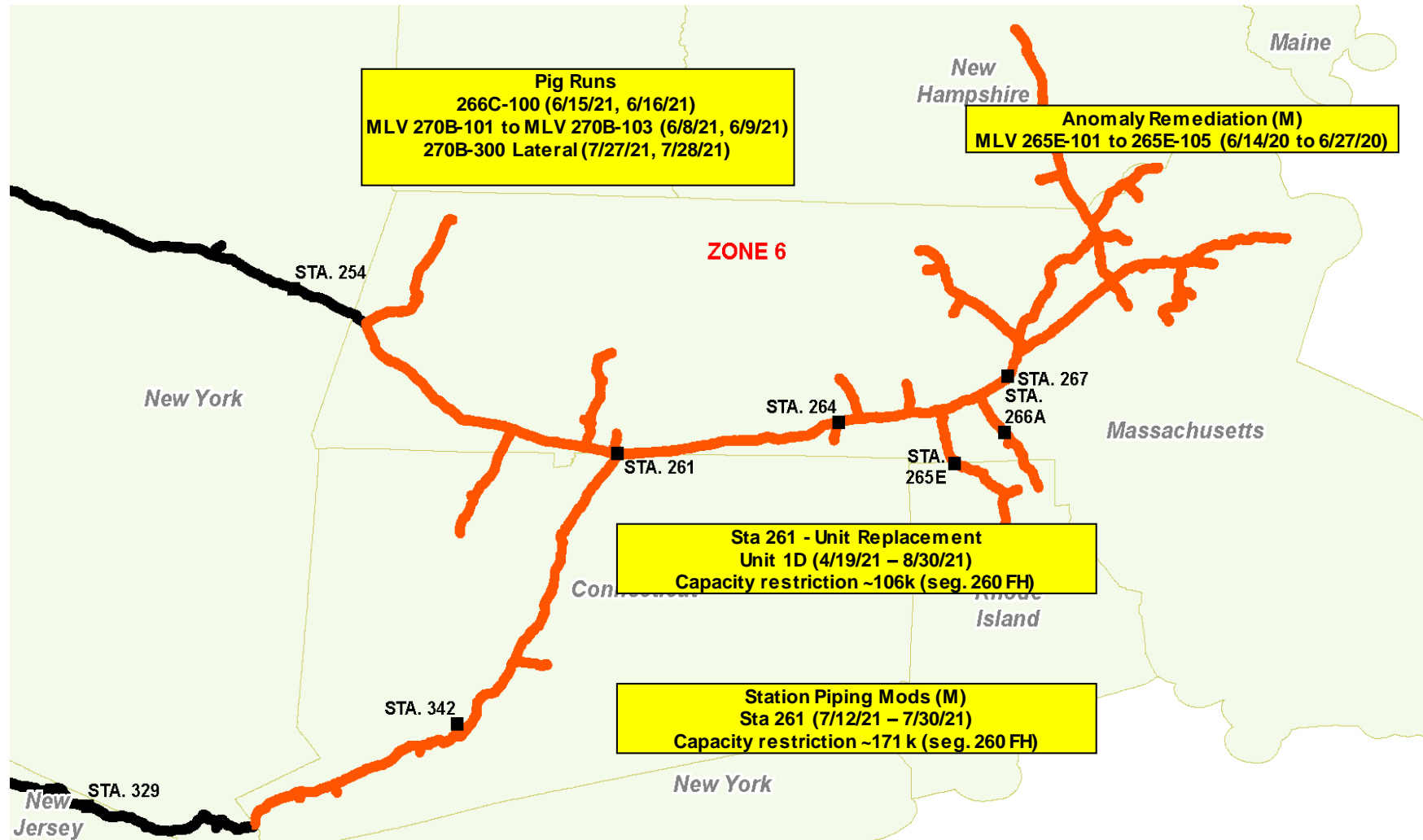
Zone 5 (May - August)



Zone 5 (Future Significant Outages)



Zone 6 (May - August)



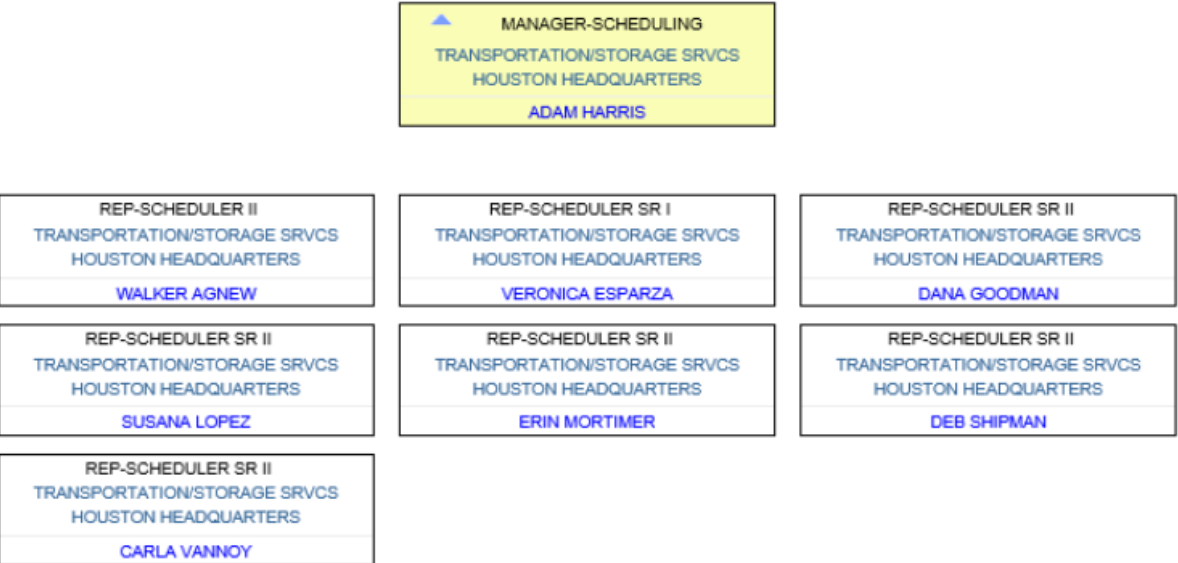
SCHEDULING UPDATE

Transportation Storage Services

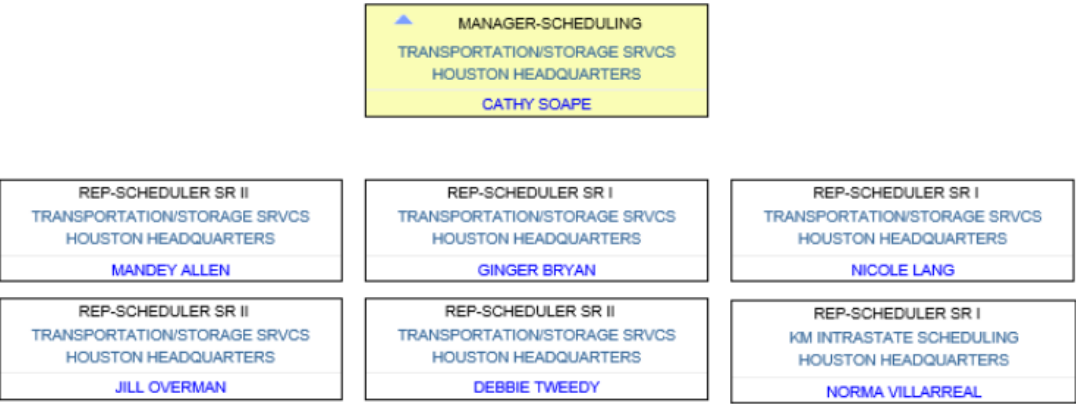
Organizational Structure



Daytime Scheduling Reps



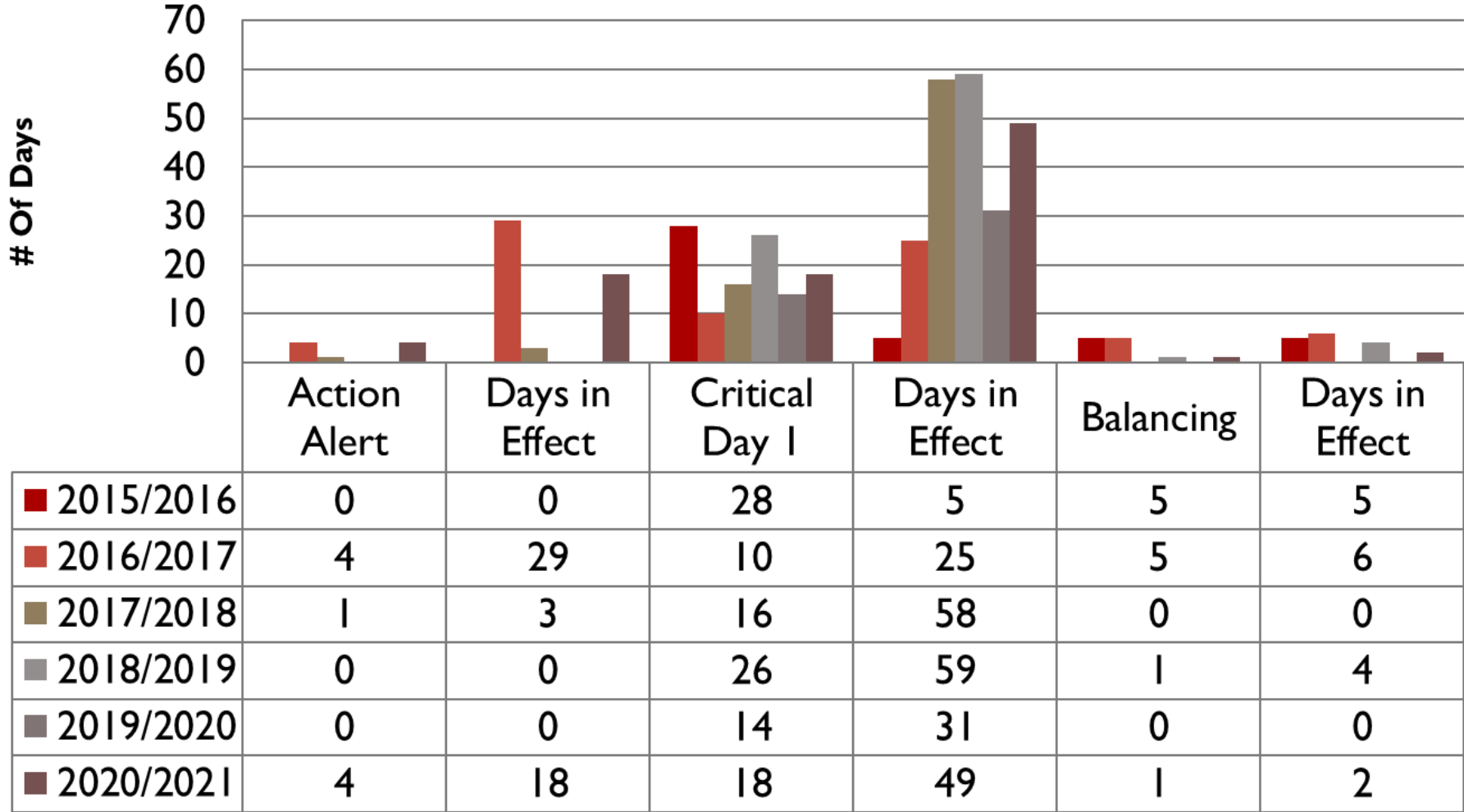
Weekend/Evening Afterhours Reps



Winter Restrictions

Restriction Point Highly Utilized TGP Paths	Percentage Days Restricted (November - March)	Percentage Days Restricted (November - March)	Percentage Days Restricted (November - March)	Percentage Days Restricted (November - March)	Percentage Days Restricted (November - March)
	2016/2017	2017/2018	2018/2019	2019/2020	2020/2021
Sta. 200/204	69%	68%	0%	0%	38%
Sta. 245	99%	100%	100%	100%	100%
Sta. 261	28%	81%	85%	63%	54%
Sta. 267	56%	68%	2%	0%	0%
MLV 268	0%	38%	9%	3%	5%
MLV 273	17%	76%	99%	70%	100%
Sta. 315 BH	97%	89%	61%	37%	100%
Sta. 321	93%	92%	81%	100%	100%
MLV 355 BH	5%	15%	34%	16%	28%
Sta. 1 BH	0%	21%	83%	17%	4%
Sta. 9 BH	44%	90%	31%	55%	13%
Mahwah	88%	60%	98%	100%	100%
Rivervale	81%	99%	88%	6%	0%

Winter Season OFOs- Zones 4,5 & 6



Summer Restrictions

Restriction Point Highly Utilized TGP Paths	Percentage Days Restricted (April – October)	Percentage Days Restricted (April – October)	Percentage Days Restricted (April - October)	Percentage Days Restricted (April - October)	Percentage Days Restricted (thru May)
	2017	2018	2019	2020	2021
Sta. 200/204	93%	67%	12%	44%	72%
Sta. 245	98%	98%	83%	94%	100%
Sta. 261	20%	49%	1%	14%	2%
Sta. 267	5%	10%	0%	0%	0%
MLV 268	0%	12%	0%	0%	0%
MLV 273	0%	17%	16%	66%	100%
Sta. 315 BH	99%	99%	70%	99%	100%
Sta. 321	76%	99%	63%	79%	100%
MLV 355 BH	29%	79%	23%	17%	64%
Sta. 1 BH	8%	80%	13%	17%	10%
Sta. 9 BH	50%	58%	22%	10%	7%
Mahwah	58%	50%	98%	89%	95%
Rivervale	57%	58%	68%	0%	0%

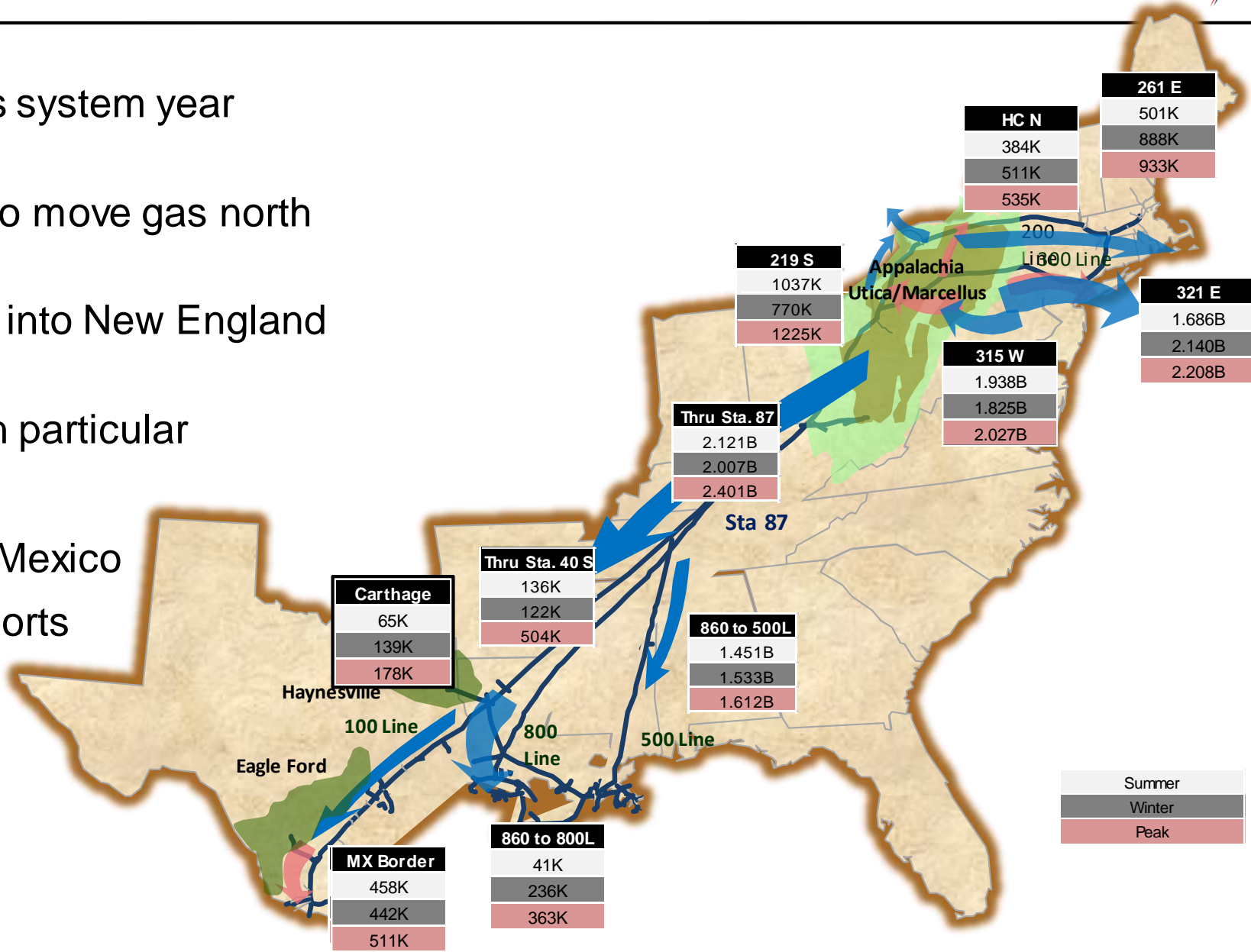
- More gas moving toward the South
- Summer maintenance
 - Work with customers as operations allow
- Storage Utilization
 - Protect firm storage
- Daily system flexibility to manage ***scheduled*** payback
 - Gas control and Scheduling evaluate payback each cycle to determine availability
 - TGP encourages customers to nominate payback in an effort to minimize customer cashout exposure

COMMERCIAL UPDATE

System Flows



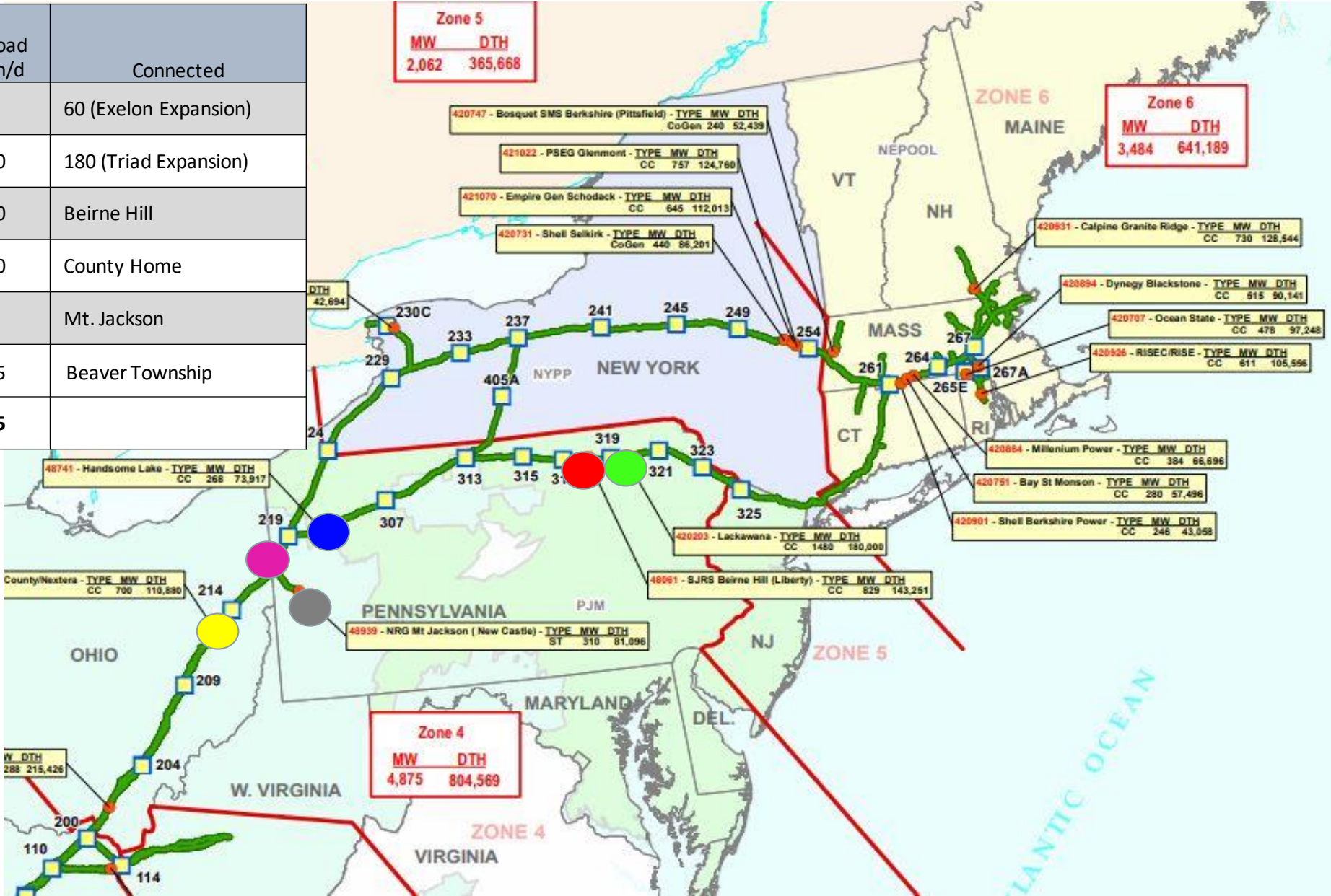
- High utilization across system year round
- Increasing demands to move gas north to south
- Traditional bottleneck into New England remains
- Power growth- PJM in particular
- Growing LNG Export
- Continued interest in Mexico
- Steady Canadian Exports



Appalachia: *in-basin* Activity attracts Power markets



Recent Plants Connected		Gas Load MDth/d	Connected
Exelon-Handsme Lake	●	50	60 (Exelon Expansion)
Invenergy-Lackawanna	●	260	180 (Triad Expansion)
Panda-Liberty	●	140	Beirne Hill
Advanced-Carroll Co.	●	120	County Home
NRG-Lawrence Co.	●	80	Mt. Jackson
Hickory Run	●	175	Beaver Township
TOAL LOAD		825	



Kinder Morgan To Purchase Stagecoach Gas Services

Kinder Morgan, Inc. announced that it has agreed to acquire –

- Stagecoach Gas Services LLC, a natural gas pipeline and storage joint venture between Consolidated Edison, Inc. and Crestwood Equity Partners LP.
- 4 natural gas storage facilities with a total FERC-certificated working gas capacity of 41 billion cubic feet and 185 miles of natural gas pipelines with multiple interconnects to major interstate natural gas pipelines, including Tennessee Gas Pipeline.
- The transaction requires regulatory approval under Hart-Scott-Rodino, and it is expected to close in the third quarter of 2021.



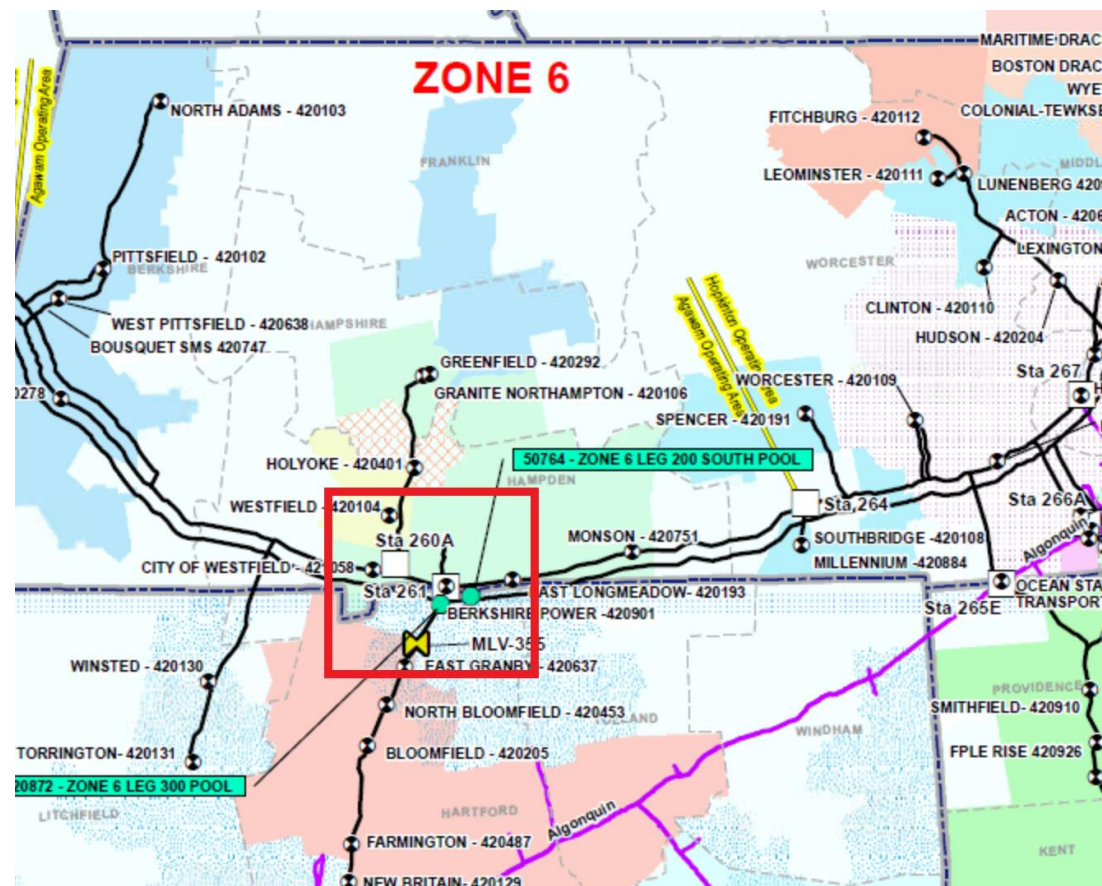
Stagecoach Assets

- Stagecoach
- Steuban
- Seneca Lake
- Thomas Corners

Line 261 Upgrade

Construction Phase

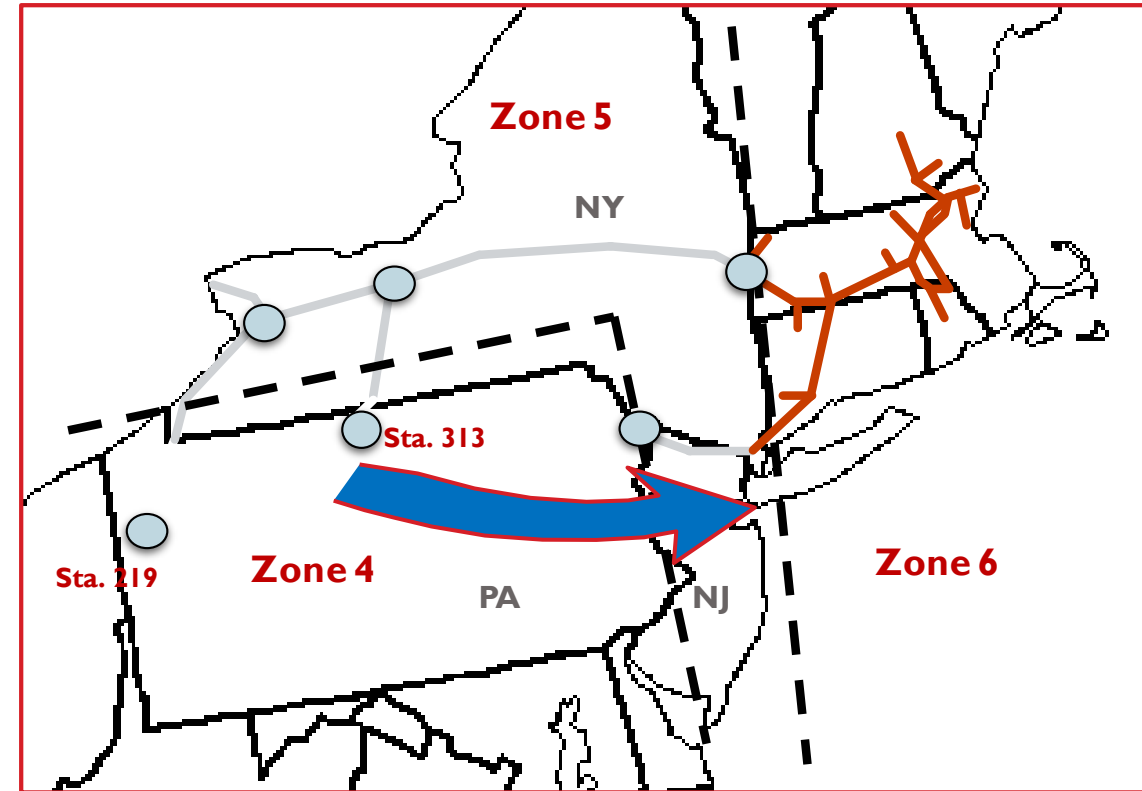
- **Commercial Driver:**
Residential/commercial gas demand growth
- **Capacity:** 96,400 Dth/d
- **Customer:**
Eversource Gas of Massachusetts
- **Project Scope:**
HP Replacement at Station 261
2 miles of looping Springfield Lateral
- **Phased In-service:**
✓ November 2020 – Looping - Complete
November 2021 – HP Replacement



East 300 Upgrade

Regulatory/Permitting Phase

- **Commercial Driver:**
Residential/commercial gas demand growth
- **Capacity:** 115,000 Dth/d
- **Customer:**
Consolidated Edison Company of New York
- **In-service:** November 2023
- **Project Scope:**
Compression only in NJ and PA
- **Project Status:**
FERC 7C Application – filed June 30, 2020 (CP20-493)
EIS to be issued on 9/24/21. 90 day authorization deadline set for 12/23/21



Park & Loan – Term (PAL-T)
ROPT & ROLT

Attributes:

- Highest form Interruptible Services
- Invoiced on Total Quantity (TQ)

Offerings:
>Term >Balancing >Operational

Term

- Based on Market Price
- Cash, Balmo and Forwards
- Timing, Location and quantity based on operational flexibility

Balancing

- Acts like synthetic storage
- Price varies based on turns, locations and term
- Yearly and Monthly terms

Operational

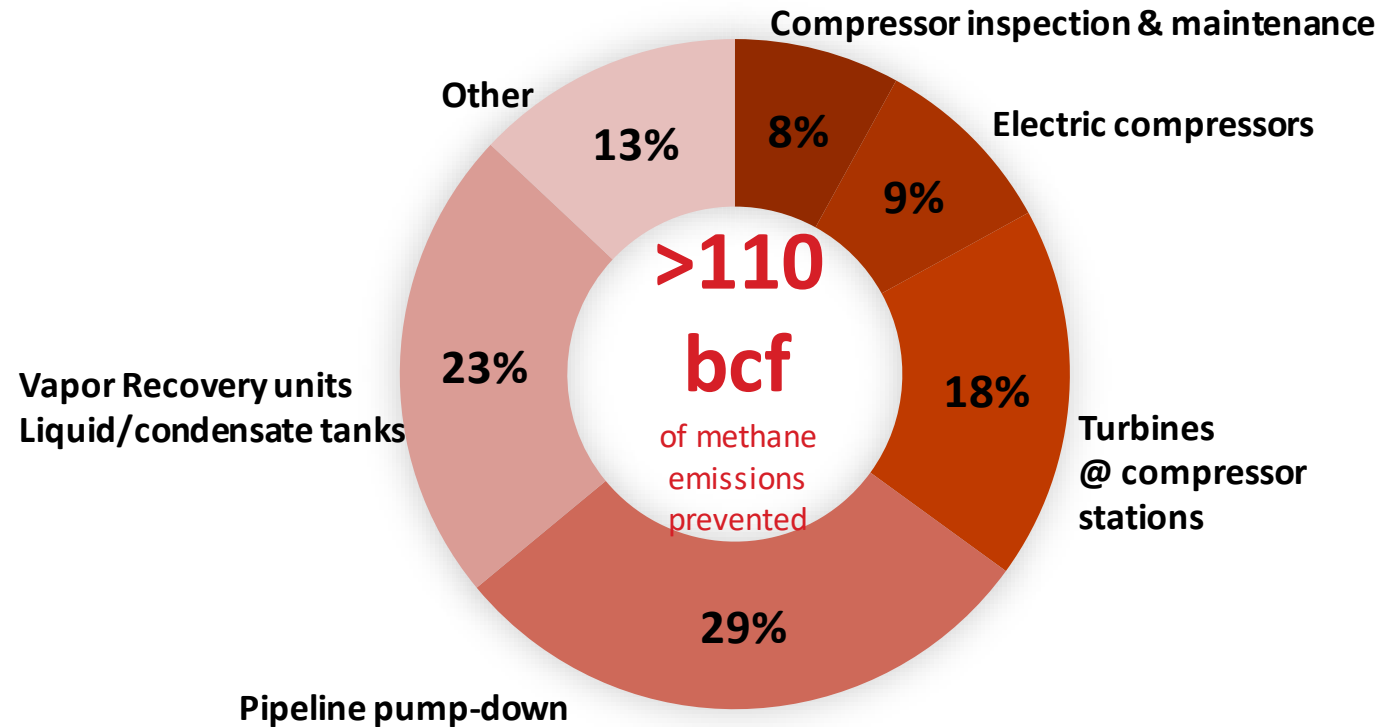
- Contracted on a customer needs basis as operational flexibility allows

Recognized Industry Leader

ESG Multi-faceted Approach

- **Leadership**
 - 2019 Emissions Intensity 0.02% TGP; 0.03% KM
 - ONE Future – Founding Member
 - INGAA GHG Task Force
 - Carbon Neutral Pipeline – Ruby
 - EPA Natural Gas STAR & Methane Challenge Programs
- **Transparency**
 - ESG Report
 - Utilize 3rd Party metrics
- **Collaboration**
 - Environmental Agencies – studies & new technology
 - Evaluate Opportunity – expansions & new facilities
 - Producers, Shippers & Peers
- **Emission Reduction Methods**
 - Pipeline pump-down
 - Compressor inspection & maintenance
 - Electric Compressor
 - Vapor Recovery Units
 - Turbines @ compressor stations

ESG RISK RATING^(a)



(a) – as of 8/10/2020

Responsibly Sourced Gas (RSG)

- **Concept started by One Future** Coalition Members
 - Goal: ensure the future of natural gas as a long-term sustainable fuel
 - Includes production, gathering, processing, transmission storage & distribution companies
- **5 Components:**
 - Methane Emissions Intensity: reduce to <1% by 2025
 - Water Conservation: water recycling and groundwater protection
 - Chemical Management: management of chemicals in the drilling and fracturing processes
 - High Integrity Well Certification: Trust Well Certification by IES (Independent Energy Standards) or similar entity
 - Community: engage in community partnerships and collaboration with environmental organizations



- Collaborate with upstream and downstream participants in the value chain
- Participate in 3rd Party Certification of value chain operations
- Partner in programs utilizing RSG wellhead to burner-tip
- Engage jointly with state commissions and other regulatory agencies
- Coordinate outreach efforts

OFO Postings

Current Open Seasons

Maintenance Schedule

OFO & Other Critical Alerts

Updated rate card & backhaul fuel info

MONTHLY CRITICAL DAY 1 OFO FOR ZONE 4 FOR ALL LMSPA and SA BALANCING PARTIES FOR OVER-DELIVERIES INTO THE PIPE OFO DAILY ACTION ALERT FOR ZONE 0 FOR ALL BALANCING PARTIES FOR OVER-TAKES FROM THE PIPE AND UNDER-DELIVERIES INTO THE PIPE

Recent Notices (See Info Postings for all notices)

OFO
 Jun 17 Ofc Action Alert For Zone 4 Lifted 6-17
 Jun 13 Ofc Action Alert For Zone 0 Eff 6-15-19
 Page: [1] 2 3

Planned Service Outage
 Jun 19 Sta 315 Unit 2A
 Jun 17 Sta 823 To Sta 820 Main Pig
 Page: [1] 2 3

Capacity Constraints/FMJ

Other Critical
 Jun 18 Restrictions For 6-18-19 Id3
 Jun 18 Restrictions For 6-19-19 Ec
 Page: [1] 2 3

Non-Critical Notices
 Jun 18 Supply Net Pipeline Position Notice
 Jun 18 Market Net Pipeline Position Notice
 Page: [1] 2 3

Open Seasons (See Info Postings for all notices)
 Jun 14 Non-Binding Os #1215
 Jun 14 Non-Binding Os #1215
 Jun 13 Os #1209 - Firm Cap Zone 0 Str Extension
 Page: [1] 2 3 4 5 6 7
 Open Season Documents

Service Programs
 No Service Programs

Other Postings
 All Notices
 Critical Notices
 Non-Critical Notices
Operating Information
 Outage Impact Report
 Maintenance Outages (Excel)
Other Information
 Training Documents (DART)
 Training Videos (DART)
 System Maps

System Constraints (mouse over the map hotspots to)

Highlight Locations

Current Gas Day Tomorrow's Gas Day

LEGEND
 Location
 Constraint
 52% Available
 No Data

Locs At/Near Capacity

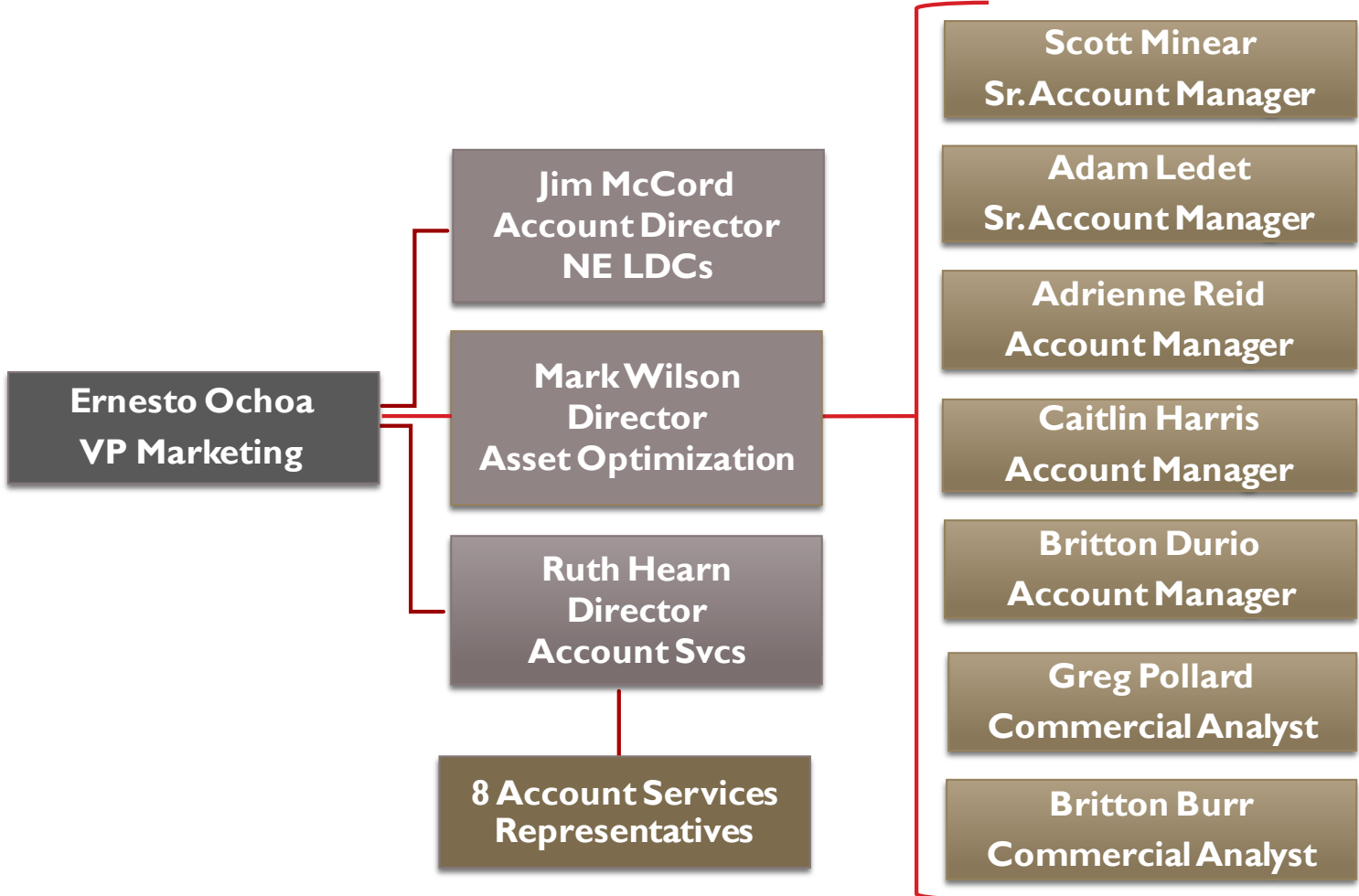
Weather Forecast data from weather.gov

Boston
 Buffalo
 Hartford
 New York
 Pittsburgh
 Houston
 Nashville
 New Orleans

On Call Assistance

Bid Room Hotline (713) 420-4135
 Scheduling Hotline (713) 420-4999
 Gas Control Hotline (800) 231-2800
 Contract Mgmt. Hotline (713) 420-3434
 DART Non-Security Issues (713) 420-4999
 DART Security Support
 Email Us

DISCLAIMER: The summary information contained in this graphical display is a sampling of points for informational purposes only. This display should not be relied on by shippers in making or confirming commercial transactions. For a listing of available capacity, please go to the capacity link under Informational Postings.



Gas Control

24 hour and emergency
800-231-2800

Ganesh Venkateshan – Manager
713-420-2099
Cell –832-980-8296

Layne Sanders – Director
713-420-5024
Cell – 832-563-5024

Rob Perkins - VP
713-420-5229
Cell – 205-527-0650

Transportation and Storage

24 hour Scheduling Hotline
713-420-4999

Cathy Soape – Manager
713-420-3814
Cell – 713-922-5083

Adam Harris – Manager
713-420-2672
Cell – 281-389-0024

Gina Mabry – Director
713-420-3685
Cell – 281-744-8666

Gene Nowak – VP
713-369-9329
Cell – 713-252-9759

Commercial/Marketing

Jim McCord - Manager, Marketing
713 – 420-5661
Cell – 832-655-4043

Ruth Hearn-Director, Acct Svcs
713-420-3881
Cell- 281-352-7975

Mark Wilson – Director, Optimization
713-420-7205
Cell – 205-447-2589

Ernesto Ochoa – VP
713 – 420-1734
Cell – 281-414-3823

Field Operations

Ron Miller– Director (Northeast)
860-763-6027
Cell – 713-829-2919

John Pannel – Director (Central)
615-221-1511
Cell – 615-714-1930

Chris Bradberry – Director (Southeast)
205-325-7277
Cell – 205-567 - 0777

Cy Harper – Director (South)
281-689-4534
Cell – 205-613-6701

Ron Bessette– VP
713-420-6012
Cell – 413-313-4380