

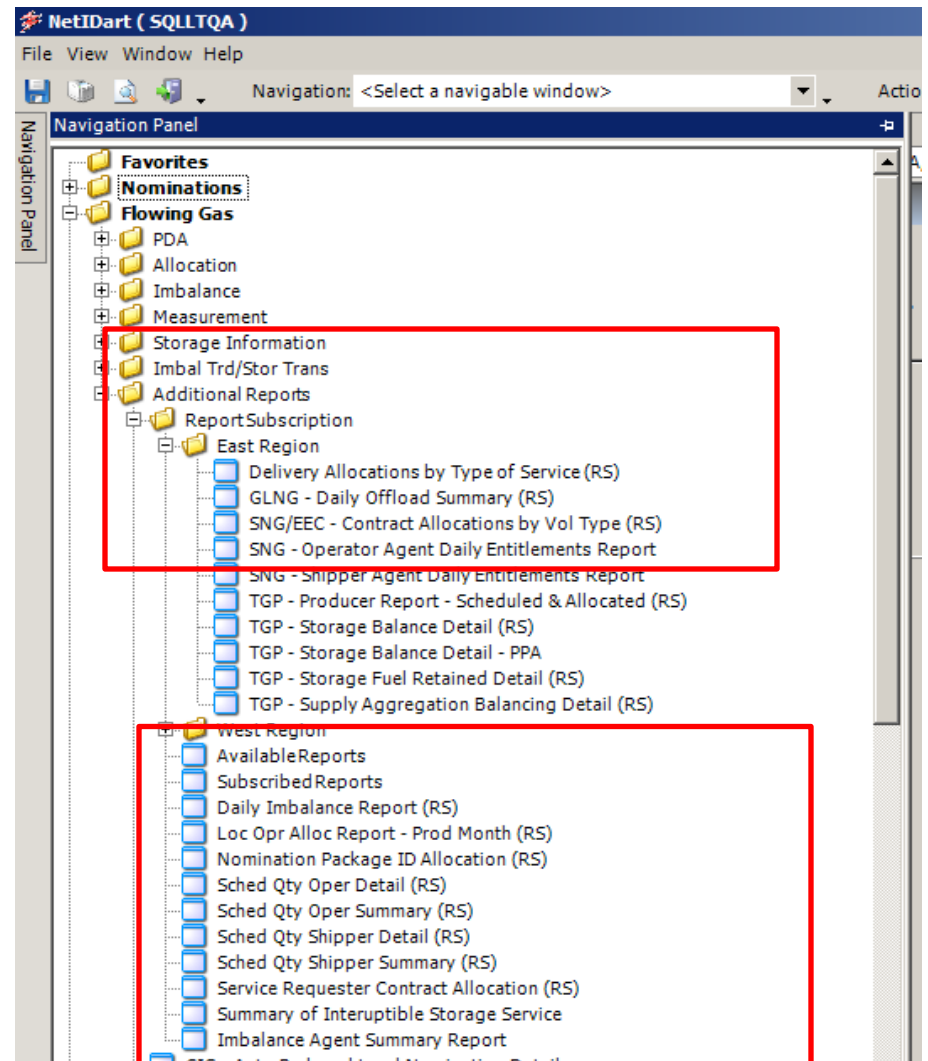
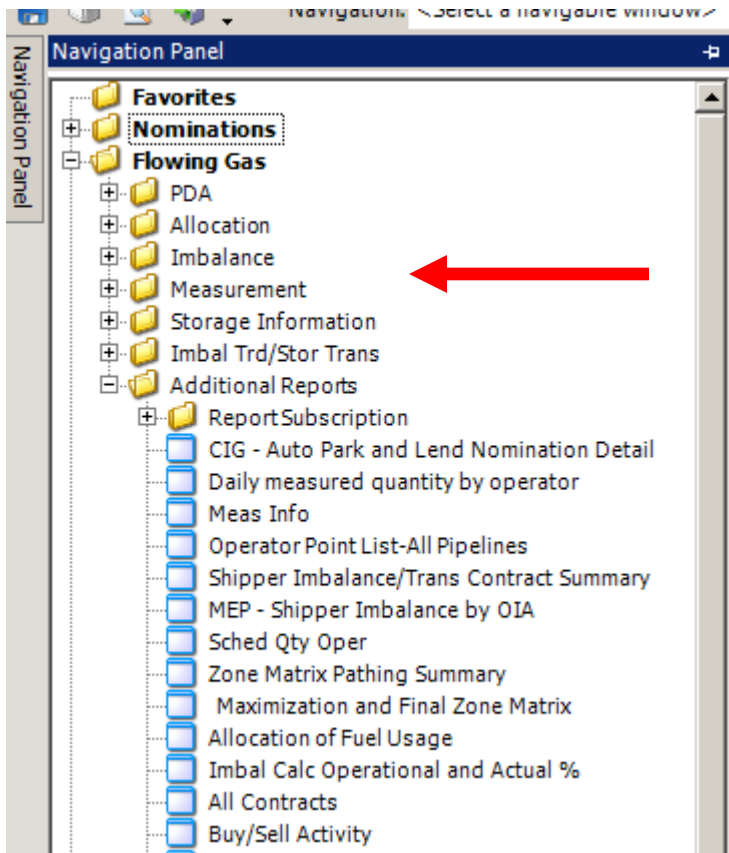


Report Subscription

Report Subscription

- Customers can subscribe to certain reports that they want to receive routinely
 - Scheduled Quantities
 - Allocations
 - Measurement
- Supports the ability to select when you want to receive reports
 - Can also run reports ‘ad hoc’ as needed
- Supports reporting for Agent relationships

Reports



Report Subscription

Additional Reports

- ReportSubscription
 - AvailableReports
 - Loc Opr Alloc Report - Prod Month (RS)
 - SubscribedReports
 - Sched Qty Shipper Detail (RS)
 - Sched Qty Shipper Summary (RS)
 - Sched Qty Oper Detail (RS)
 - Sched Qty Oper Summary (RS)
 - Producer Report - Scheduled & Allocated (RS)
 - Service Requester Contract Allocation (RS)
 - Supply Aggregation Balancing Detail (RS)
 - Storage Balance Detail (RS)
 - Storage Fuel Retained Detail (RS)

Pipeline: 3705 - SOUTHERN NATURAL GAS CO.

Screen ID	Name	Description
WSVL0342_RS	Interruptible & Overrun Daily Report	Interruptible & Overrun Daily Report
WSVL0341_RS	IT/AO Volume by Shipper Report	IT/AO Volume by Shipper Report
WIVL9000_RS	Loc Opr Alloc Report - Prod Month (RS)	Loc Opr Alloc Report - Prod Month (RS)
WIVL9010_RS	Producer Report - Scheduled & Allocated (RS)	Producer Report - Scheduled & Allocated (RS)
WNVL0007_RS	Sched Qty Oper Detail (RS)	Sched Qty Operator Detail
WNVL0006_RS	Sched Qty Oper Summary (RS)	Sched Qty Operator Summary
WNVL0004_RS	Sched Qty Shipper Detail (RS)	Sched Qty Shipper Detail
WNVL0003_RS	Sched Qty Shipper Summary (RS)	Sched Qty Shipper Summary
WIVL9005_RS	Service Requester Contract Allocation (RS)	Service Requester Contract Allocation (RS)
WVRVC1261_RS	Storage Balance Detail (RS)	Storage Balance Detail (RS)
WVRVC1255_RS	Storage Fuel Retained Detail (RS)	Storage Fuel Retained Detail(RS)
WIVL9015_RS	Supply Aggregation Balancing Detail (RS)	Supply Aggregation Balancing Detail (RS)

Add Schedule

Change Schedule

Inquire Schedule

Delete Schedule

Print

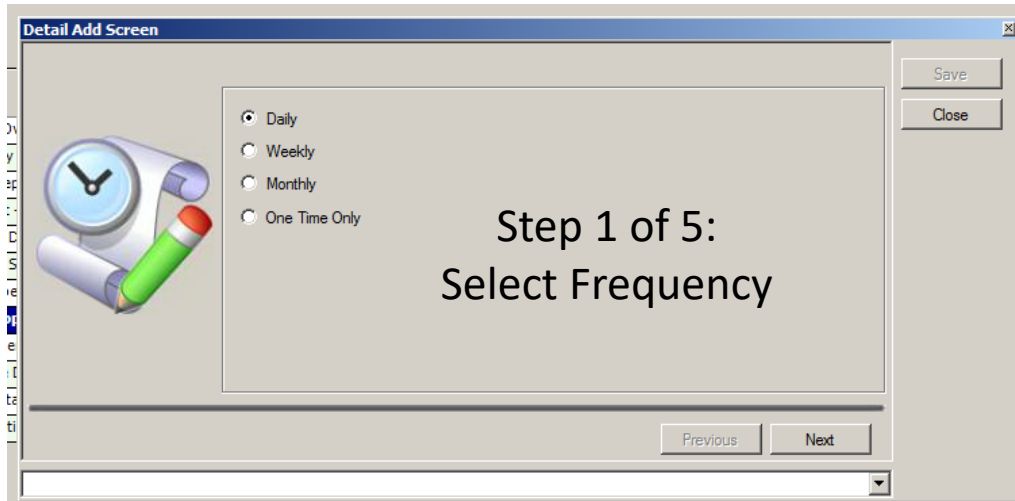
Save As

Add to Favorites

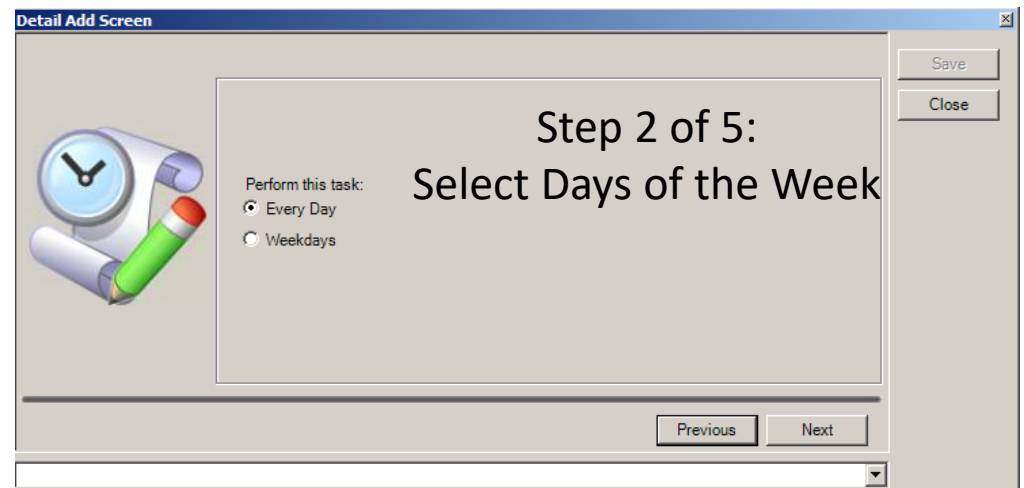
Remove from Favorites

- 1) Red-highlighted reports are currently subscribed
- 2) Select a new report and right click for more options
- 3) Select "Add Schedule" from pop up window

Report Subscription



The screenshot shows a software window titled "Detail Add Screen". On the left, there is an icon of a clock and a rolled-up document with a green pen. The main area contains the text "Step 1 of 5: Select Frequency" and four radio button options: "Daily" (selected), "Weekly", "Monthly", and "One Time Only". On the right side, there are "Save" and "Close" buttons. At the bottom, there are "Previous" and "Next" buttons.




The screenshot shows the same software window "Detail Add Screen" at a later stage. The main area contains the text "Step 2 of 5: Select Days of the Week" and the instruction "Perform this task:". Below this are two radio button options: "Every Day" (selected) and "Weekdays". The "Save" and "Close" buttons are on the right, and "Previous" and "Next" buttons are at the bottom.

Report Subscription

Detail Add Screen

Select Report Parameters



Recipient Prop:

Svc Req:

Flow Date: [Clear](#)

Cycle:


Previous Next

- Step 3 of 5:
- 1) Select Svc Req and Cycle (suggest all NAESB Cycles).
 - 2) Press "Clear" next to Flow Date

Step 4 of 5:
Provide Contact Information

Detail Add Screen

Requestor Information



Name:

Email:

(Separate By Semi colon)

Message:

File Addon:

Save Close

Previous Next

Report Subscription

Detail Add Screen

Confirmation

Please click on save button to schedule the report at
08:14 AM every day, . starting 03/04/2015

With Parameters

Recipient Prop: 61000
Svc Req: 90909090|
Flow Date: 01/01/0001
Cycle: TIME|
AccountingCold: 15038
End Date: Mar 1 2015 8:14AM
Retrieve ind: A
Svc req kt: 0
Single kt ind: Y

**Step 5 of 5:
Confirm information and
Save your update**

Save
Close

Previous Finish

