



# SNG Graphical Pipe

---

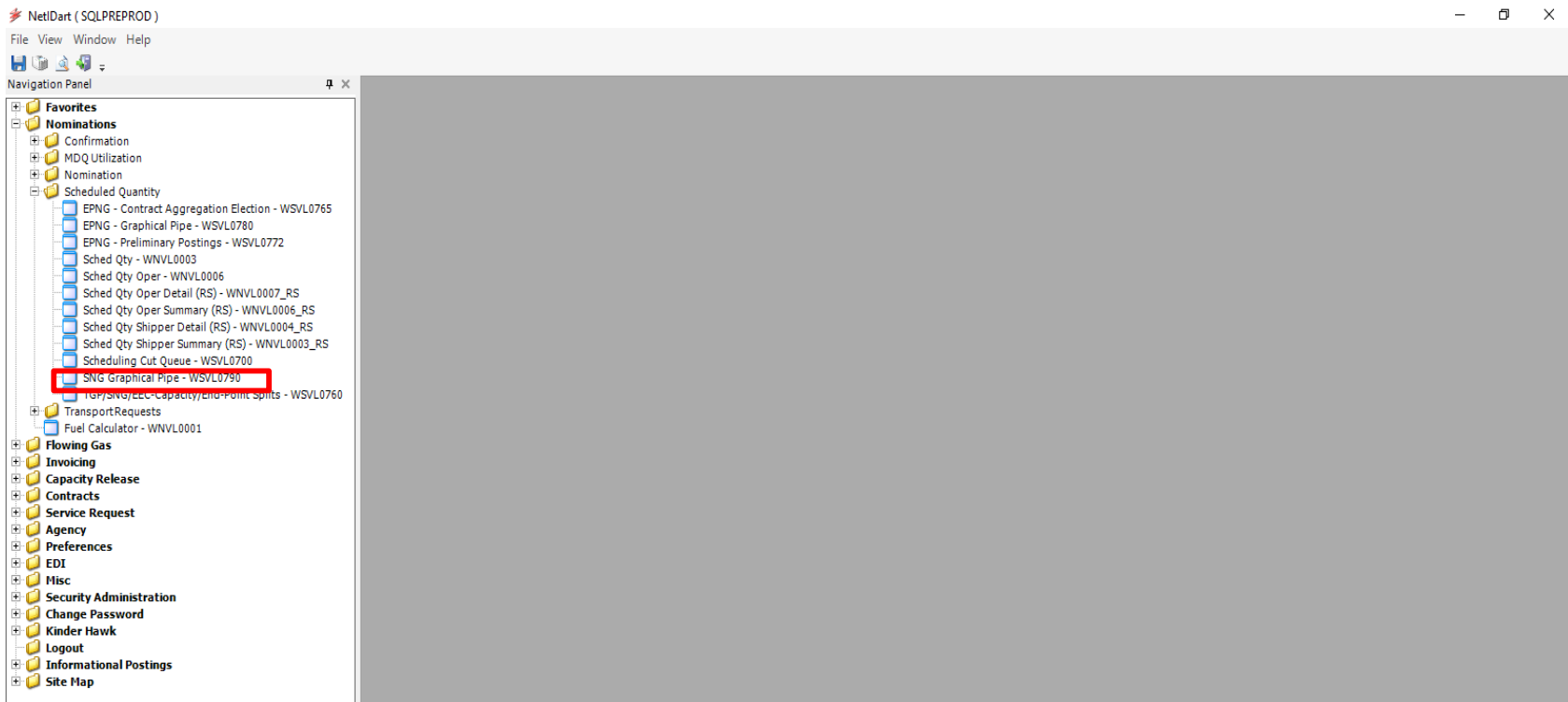
# SNG Graphical Pipe

---

- The SNG Graphical Pipe was an SNG Working Group request to provide a graphical depiction of the SNG system including pins, restrictions and segments on the pipe.
- SNG moved the Graphical Pipe to production in the 2<sup>nd</sup> Quarter of 2022 and would now like to open it up to SNG Shippers.

# SNG Graphical Pipe Navigation Panel

- To access the screen, go to the Navigation Panel and click on:  
Nominations -> Scheduled Quantity -> SNG Graphical Pipe-WSVL0790



Pipeline: 3705 - SOUTHERN NATURAL GAS CO.

Latitude:

Retrieve

Clear

Date: TODAY

6/20/2022

Longitude:

- +

Save

Cycle: TIMELY

Map Location Section Zone



**View Options**

- View all
- Segments
- Locations
- Pool Locations
- Storage
- Compressor Station
- Interconnects
- Restricted Locations/Segments

Use zoom feature to access all aspects of the interactive map.

PIN Locator:

Locate PIN

Clear All

**Notice**  
**Kinder Morgan, Inc**  
**Confidential Information and Disclaimer**

This map is intended for general illustrative purposes only. Kinder Morgan does not guarantee the accuracy of this map or information delineated thereon, nor does Kinder Morgan assume responsibility for any reliance thereon. In-Path determinations for scheduling or other purposes will be based on the information provided in the DART System under Misc -> Points in the Path. Recipient agrees not to copy, distribute or digitize this map without express consent from Kinder Morgan or its affected affiliates.



# SNG Graphical Pipe-WSVL0790

- The default view will show the entire system map.
- Select the date (today, tomorrow or yesterday), cycle and view options desired.
- Click Retrieve.

The screenshot displays the SNG Graphical Pipe software interface. At the top, the title bar reads "NetVolumes PRODUCTION PRODUCTION (SQLPROD)". Below it is a menu bar with "File View Window Help". The main window title is "SNG" and the pipeline name is "3705 - SOUTHERN NATURAL GAS CO.". The interface includes a "Navigation Panel" on the left with tabs for "Map", "Location", "Section", and "Zone". The main map area shows a geographical view of the Southeastern United States, with pipeline segments highlighted in blue, orange, and green, labeled as "ZONE 0", "ZONE 1", "ZONE 2", and "ZONE 3". Major cities like Nashville, Atlanta, and Jacksonville are visible. On the right side, there are several control panels: a "Date" dropdown set to "TODAY" and a "Cycle" dropdown set to "TIMELY", both with a date of "6/20/2022"; a "View Options" panel with checkboxes for "View all", "Segments", "Locations", "Pool Locations", "Storage", "Compressor Station", "Interconnects", and "Restricted Locations/Segments"; and a "PIN Locator" section with "Locate PIN" and "Clear All" buttons. A "Notice" box at the bottom right contains a "Confidential Information and Disclaimer" for Kinder Morgan, Inc. The bottom status bar shows "WSVL0790" and "Powered by c8ri".



# SNG Graphical Pipe-WSVL0790

- Use the plus button to zoom in for more specific details.
- Drag the map to the left or right to focus view on a specific area.

Navigation Panel

Path SNG/ Unba Sche Anal Point Sche Sche WSV Point Cont Disp Co - Co - SNG

Pipeline: 3705 - SOUTHERN NATURAL GAS CO.

Latitude: [ ] [ - ] [ + ] [ ] Retrieve [ ] Clear [ ] Save [ ]

Date: TODAY 6/20/2022

Cycle: TIMELY

Map Location Section Zone

View Options

- View all
- Segments
- Locations
- Pool Locations
- Storage
- Compressor Station
- Interconnects
- Restricted Locations/Segments

Use zoom feature to access all aspects of the interactive map.

PIN Locator: [ ]

Locate PIN [ ]

Clear All [ ]

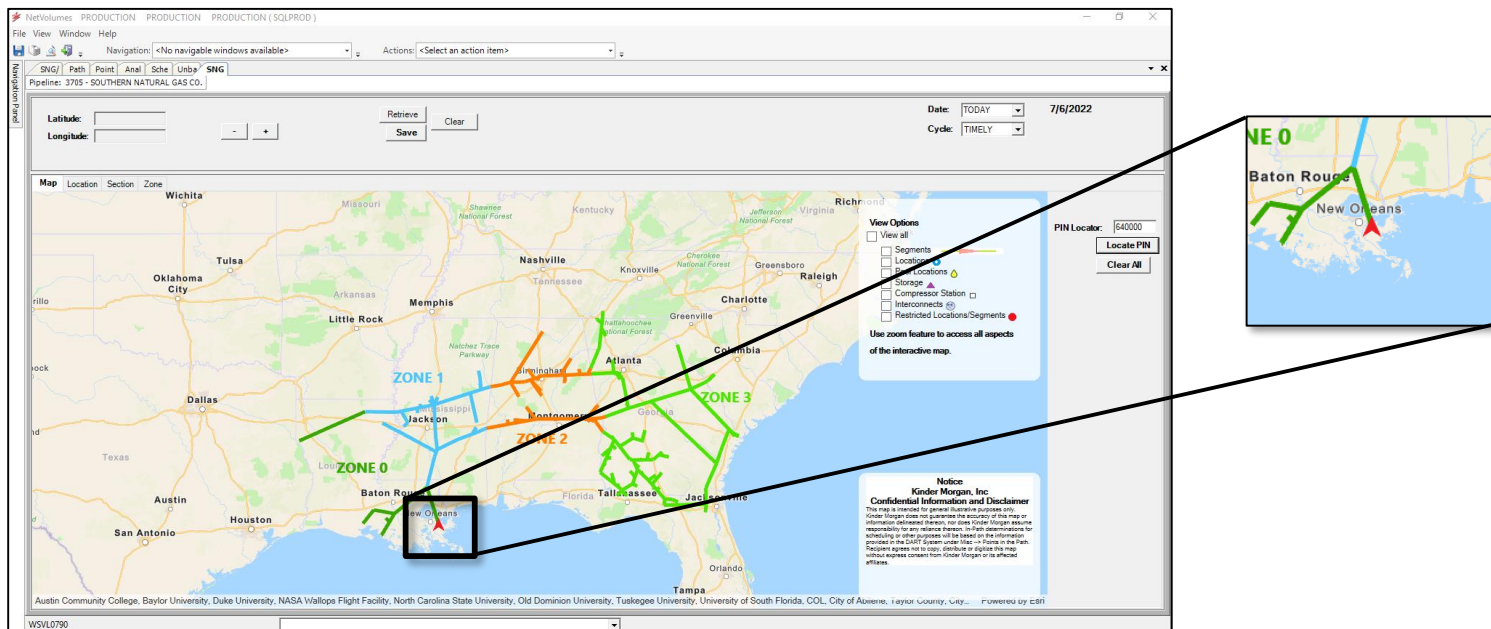
Notice  
Kinder Morgan, Inc  
Confidential Information and Disclaimer

This map is intended for general illustrative purposes only. Kinder Morgan does not guarantee the accuracy of this map or information delineated thereon, nor does Kinder Morgan assume responsibility for any reliance thereon. In-Path determinations for scheduling or other purposes will be based on the information provided in the DART System under Misc -> Points in the Path. Recipient agrees not to copy, distribute or digitize this map without express consent from Kinder Morgan or its affected affiliates.

WSVL0790

# Pin Locator Example

- By entering a specific pin number (EX: pin 640000) and clicking Locate PIN, you will see a red arrow displayed on the map. Additional pins can be added to the map one pin number at a time. Click “Clear All” to remove all pins.



\*Helpful Hint: It may be necessary to zoom out to see located pin.



# Segment Restriction Example

- By hovering over a restricted segment (Ex. Seg 530), capacity and restriction information from the OAC will be displayed.

The screenshot shows a web-based application interface for managing gas pipelines. The top navigation bar includes 'NetVolumes PRODUCTION PRODUCTION PRODUCTION (SQLPROD)'. Below this is a menu bar with 'File View Window Help' and a navigation dropdown set to '<No navigable windows available>'. The main interface features a map of the Southeastern United States with gas pipeline segments color-coded by zone: Zone 0 (green), Zone 1 (blue), Zone 2 (orange), and Zone 3 (green). A pop-up window is displayed over segment 530, which is highlighted in red. The pop-up window contains the following information:

<b>SEC: 531 SEG: 530</b>
Cycle: ITRD3
<b>TD1</b>
Operating Capacity: 849000
Total Scheduled Quantity: 835676
Operationally Available Capacity: 13324
<b>TD2</b>
Operating Capacity: 115000
Total Scheduled Quantity: 0
Operationally Available Capacity: 115000
Service Priority Cut: Out Of Path

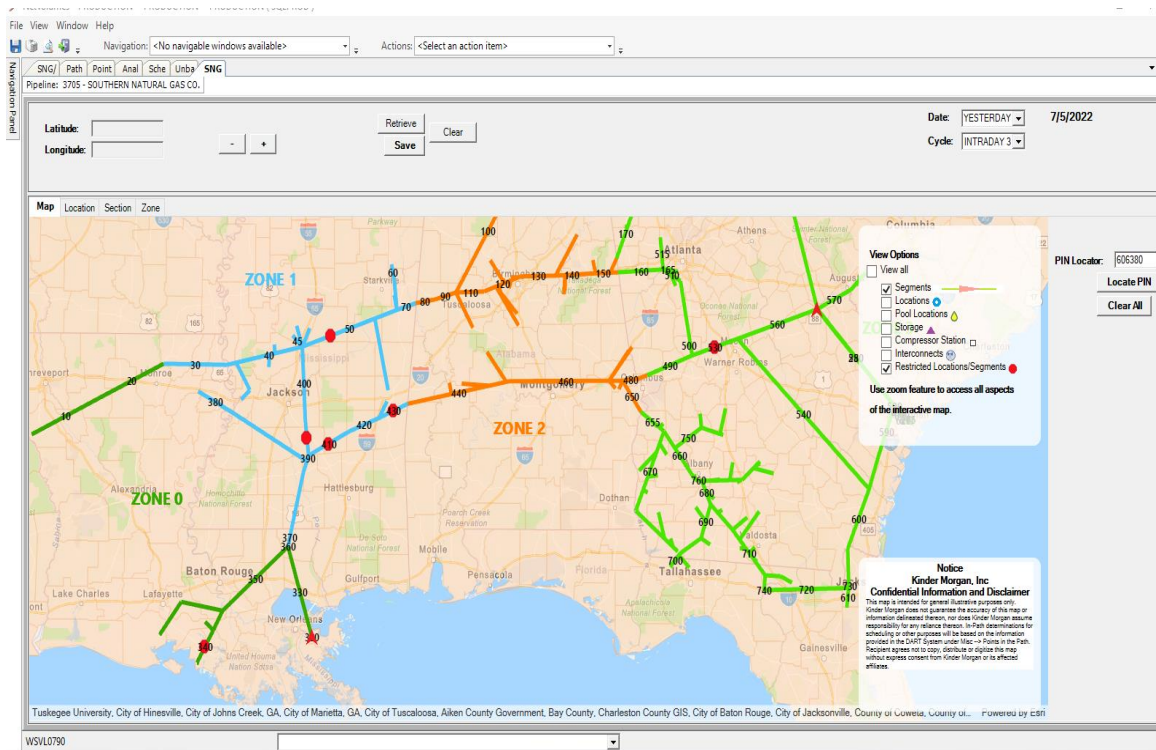
The interface also includes a 'View Options' panel on the right with checkboxes for 'View all', 'Segments', 'Locations', 'Pool Locations', 'Storage', 'Compressor Station', 'Interconnects', and 'Restricted Locations/Segments'. A 'PIN Locator' field and 'Locate PIN' and 'Clear All' buttons are also present. The bottom of the screen shows a status bar with 'WSVL0790' and a map attribution for Esri.





# Example of Pin and Segment Restriction

- \*This screen may be useful in evaluating possible paths or restrictions on the system.
  - First, use PIN locator to enter Receipt Pin 640000 HPGT in Seg 330 and Delivery Pin 606380 Wrens in Seg 570.
  - Then under view Options - Click “Segments” and “Restricted Locations/Segments”
  - The end result will show Segments between the two pins. In this example you will see red restriction markers for Segment 410, 430 and 530.





# Questions

---

- Please reach out to your Scheduling Representative with any questions and/or feedback.
  - Margaret Blume [margaret\\_blume@kindermorgan.com](mailto:margaret_blume@kindermorgan.com)
  - Adam Ivy [adam\\_ivy@kindermorgan.com](mailto:adam_ivy@kindermorgan.com)
  - Allison Kaczynski [allison\\_kaczynski@kindermorgan.com](mailto:allison_kaczynski@kindermorgan.com)
  - Tracy Minter [tracy\\_minter@kindermorgan.com](mailto:tracy_minter@kindermorgan.com)
  - Stacey Rippetoe [stacey\\_rippetoe@kindermorgan.com](mailto:stacey_rippetoe@kindermorgan.com)