



Natural Gas: Lifeblood of the Southeast

Devy Traylor

Vice President Business Development

LDC Forum – Southeast
April 16, 2025



KINDER  MORGAN

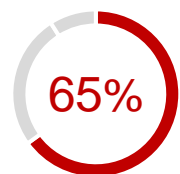


Forward Looking Statements

This presentation contains forward-looking statements. These forward-looking statements are identified as any statement that does not relate strictly to historical or current facts. In particular, statements, express or implied, concerning future actions, conditions or events, future operating results or future production or available capacity are forward-looking statements. Forward-looking statements are not guarantees of performance. They involve risks, uncertainties and assumptions. Future actions, conditions or events and future results of operations of Kinder Morgan, Inc. may differ materially from those expressed in these forward-looking statements. Many of the factors that will determine these results are beyond Kinder Morgan's ability to control or predict. These statements are necessarily based upon various assumptions involving judgments with respect to the future, including, among others, the ability to achieve synergies and revenue growth; national, international, regional and local economic, competitive and regulatory conditions and developments; technological developments; capital and credit markets conditions; inflation rates; interest rates; the political and economic stability of oil producing nations; energy markets; weather conditions; environmental conditions; business and regulatory or legal decisions; the pace of deregulation of retail natural gas and electricity and certain agricultural products; the timing and success of business development efforts; terrorism; and other uncertainties. There is no assurance that any of the actions, events or results of the forward-looking statements will occur, or if any of them do, what impact they will have on our results of operations or financial condition. Because of these uncertainties, you are cautioned not to put undue reliance on any forward-looking statement. Please read "Risk Factors" and "Information Regarding Forward-Looking Statements" in our most recent Annual Report on Form 10-K and our subsequently filed Exchange Act reports, which are available through the SEC's EDGAR system at www.sec.gov and on our website at www.kindermorgan.com.

Kinder Morgan's Infrastructure Portfolio

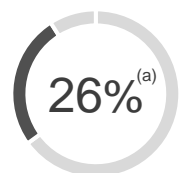
NATURAL GAS



Largest U.S. Natural Gas Transmission Network

- ~66,000 miles of natural gas pipelines moving ~40% of U.S. natural gas production
- Interest in over 700 bcf of working storage capacity, ~15% of U.S. capacity

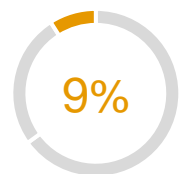
REFINED PRODUCTS



Largest U.S. Independent Refined Products Transporter & Terminal Operator

- Transport ~1.7 mmbbl/d of refined product volumes
- ~9,500 miles of refined products & crude pipelines
- 139 liquids & bulk terminals; 16 Jones Act vessels
- 135 mmbbl of total liquids storage capacity

CO₂



One of the Largest CO₂ Transporters in the U.S.

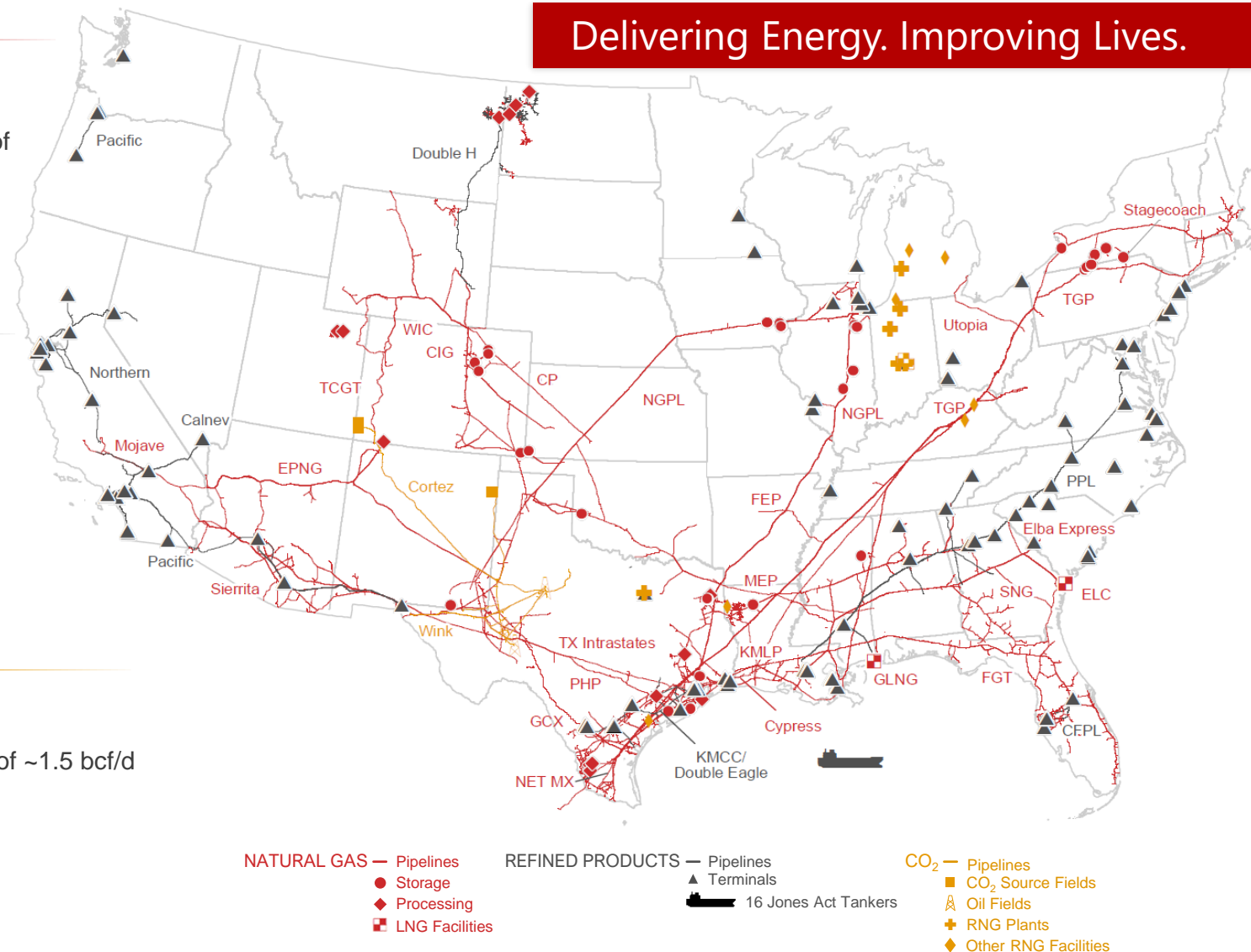
- ~1,500 miles of CO₂ pipelines with transport capacity of ~1.5 bcf/d
- Produce and transport CO₂ for enhanced oil recovery

Growing Energy Transition Portfolio

- RNG production capacity of 6.4 bcf^(b)

BUSINESS MIX

Delivering Energy. Improving Lives.



Note: Volumes per 2025 budget. Business mix based on 2025 budgeted Total Adjusted Segment EBDA.

a) Refined Products includes 13% from our Products Segment and 13% from our Terminals Segment.

b) Annual capacity at KMI share expected Q1 2025. Autumn Hills RNG facility in late stages of commissioning.

Energy Demand Drivers – Technology, Industry, Regional Growth, and Regulations

Which one consumes more power?

■ Power demand for Artificial Intelligence

■ Manufacturing

■ P

■ R

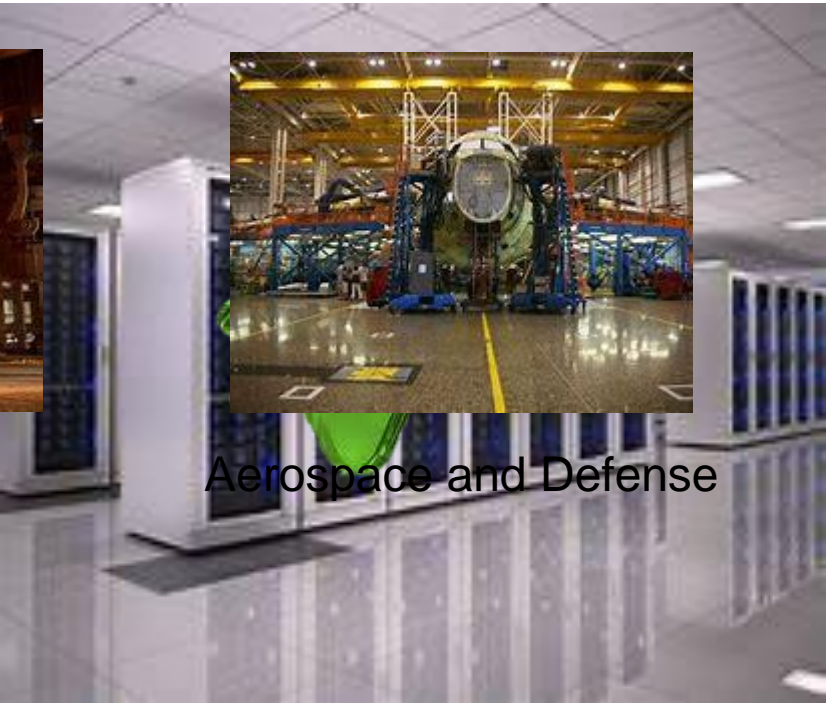
fu

—

—

Projected US data center energy consumption (medium scenario), terawatt-hours

Projected US data center share of total US power demand, %



Elba Island LNG Import/Export Facility

In contrast to California, New York, and Illinois that lost a combined 658,719

Previously, at the LDC Gas Forum Southeast.....



23rd Annual

April 12 – 14, 2023

Westin Savannah Harbor Golf Resort & Spa
Savannah, GA

WANT TO MAKE A BIGGER IMPACT?

Sponsor the Forums!

Every sponsor is provided visibility that'll ensure your company shines in front of the industry's finest...[Find out more.](#)

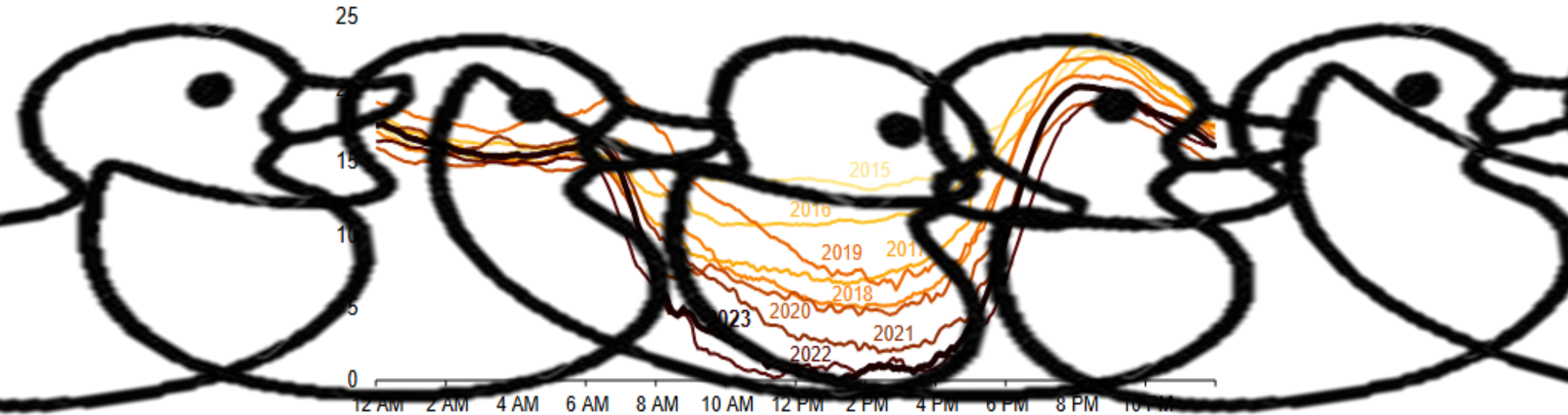


If it walks like a duck.....

California's duck curve is getting deeper

CAISO lowest net load day each spring (March–May, 2015–2023), gigawatts

eia



Ensuring Reliability When the Sun Hides

■ Demand side management

- Electric vehicles replace gasoline vehicles
- Heat pumps replace gas furnaces
- Electric appliances replace gas appliances

■ Utility scale batteries

- Limited duration with long charge times
- Materials used to produce batteries is limited and not easily mined

■ Green Hydrogen

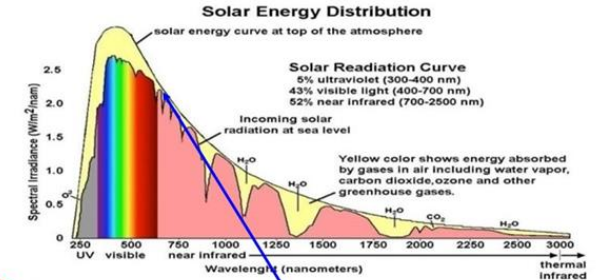
- Efficiency problem
- Energy density problem

■ Nuclear power

- Great for baseload, not peaking
- New construction?


No solar energy lost to atmosphere.
Up to 46% lost at earth's surface.

Sun shines on satellites
22 hrs/d year round



Hope Strategy

Major Advancement in the Hope Strategy

- Caltech engineers wirelessly transmitted data from a small module (about one foot long)
 - One at a time, the module was launched
- The engineers were able to “detect” it at the receiving station
- Weighing in at 5 pounds, the module was estimated to cost about \$4.2 billion
- One potential cost of the mission is estimated to reach \$4.2 billion
 - That’s about \$4.2 billion for material delivery to space
 - Excludes cost of terrestrial manufacturing, space assembly and commissioning, and land based receiving stations
 - Potential for extraterrestrial tariff wars 



Imagine the disruption this little fuse could cause!
Imagine the cost to replace it!



Detecting energy transmitted from space

“Caltech Super Bowl”



Note: Various sources used to estimate costs. Potential for inconsistencies across sources.

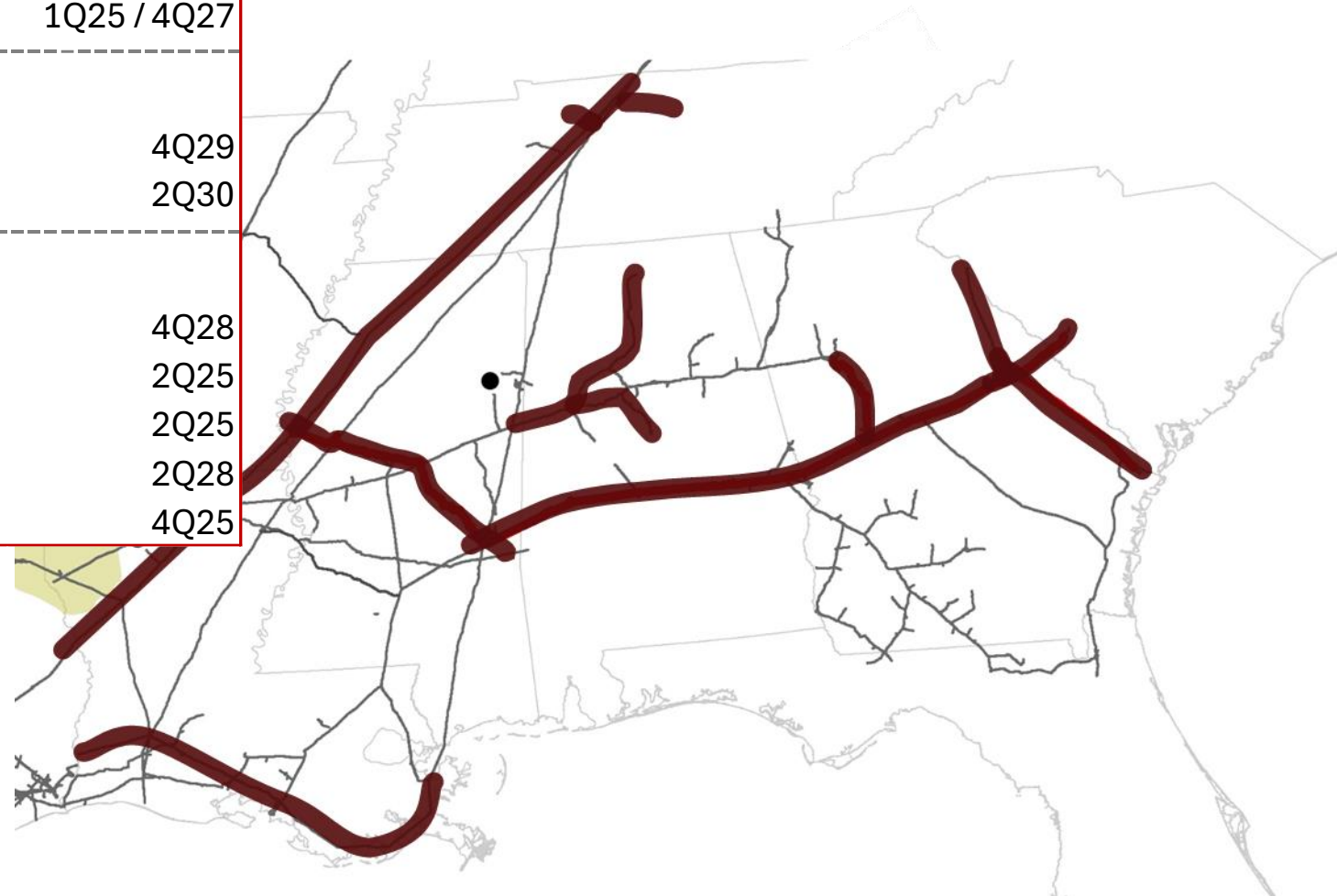
Meanwhile, back on earth.....

How do we fill the missing pieces between renewable and reliable energy?



KM Planning Major Infrastructure to Support Growth in Southeast

Kinder Morgan Projects	Capacity	In-Service
Southern Natural Gas Company, L.L.C.		
<i>South System Expansion 4</i>	1,323 MDth/d	4Q28 / 4Q29
<i>North System Expansions</i>	44 MDth/d	1Q25 / 4Q27
Elba Express Company, L.L.C.		
<i>South System Expansion 4</i>	482 MDth/d	4Q29
<i>Bridge</i>	325 MDth/d	2Q30
Tennessee Gas Pipeline, L.L.C.		
<i>Mississippi Crossing</i>	2,100 MDth/d	4Q28
<i>Muskrat</i>	225 MDth/d	2Q25
<i>Cumberland</i>	245 MDth/d	2Q25
<i>Cheatham</i>	280 MDth/d	2Q28
<i>Station 40</i>	150 MDth/d	4Q25



- Increases EEC's North to South capacity by 40%
- Meaningful supply reach for SNG, TGP, and Transco shippers

Managing Budget and Schedule on Major Projects

- Good community relationships
 - Open houses to seek input on proposed projects
- ~~Incorporate comments received into design~~
■ Complete and accurate FERC application
 - Reduces data requests, thus facilitating FERC's review process
- Supply Chain Strategy
 - Early engagement with vendors and contractors to “reserve” capacity for timely delivery
 - Employ corporate-wide buying power to obtain competitive pricing

Supply Chain Vendor Meeting

Managing Budget and Schedule on Major Projects

- Good community relationships
- Complete and accurate FERC
- Supply Chain strategy
- Project Management
 - Proper staffing focused solely
- Field staffing
 - Ensure continuity of resources
 - Additional staff will be required to maintain the new facilities
 - Hiring strategy must support commissioning activities



Living Our Vision and Values

- Kinder Morgan's Vision:
 - Delivering Energy to Improve Lives and Create a Better World

- Kinder Morgan's Values:
 - Integrity
 - Accountability
 - Safety
 - Excellence

- The projects mentioned support our Vision by providing energy to a growing region

- Our Values guide our actions in dealing with customers, affected landowners, regulatory agencies, the public, employees, and other stakeholders

Natural Gas – Lifeblood of the Southeast

- Used in homes, commercial activities, industry, power generation
- Clean
- Affordable
- Domestically produced
- Reliable day and night

Natural Gas Infrastructure - Sunshine on a cloudy day!





Questions?