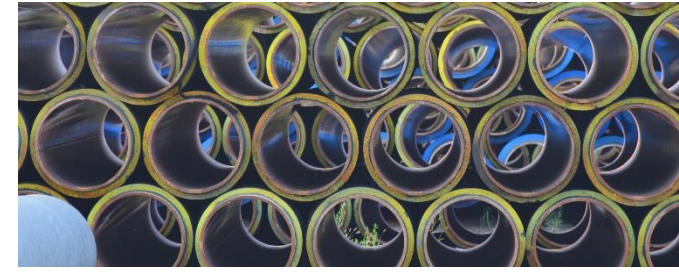




*Delivering Energy to Improve Lives*

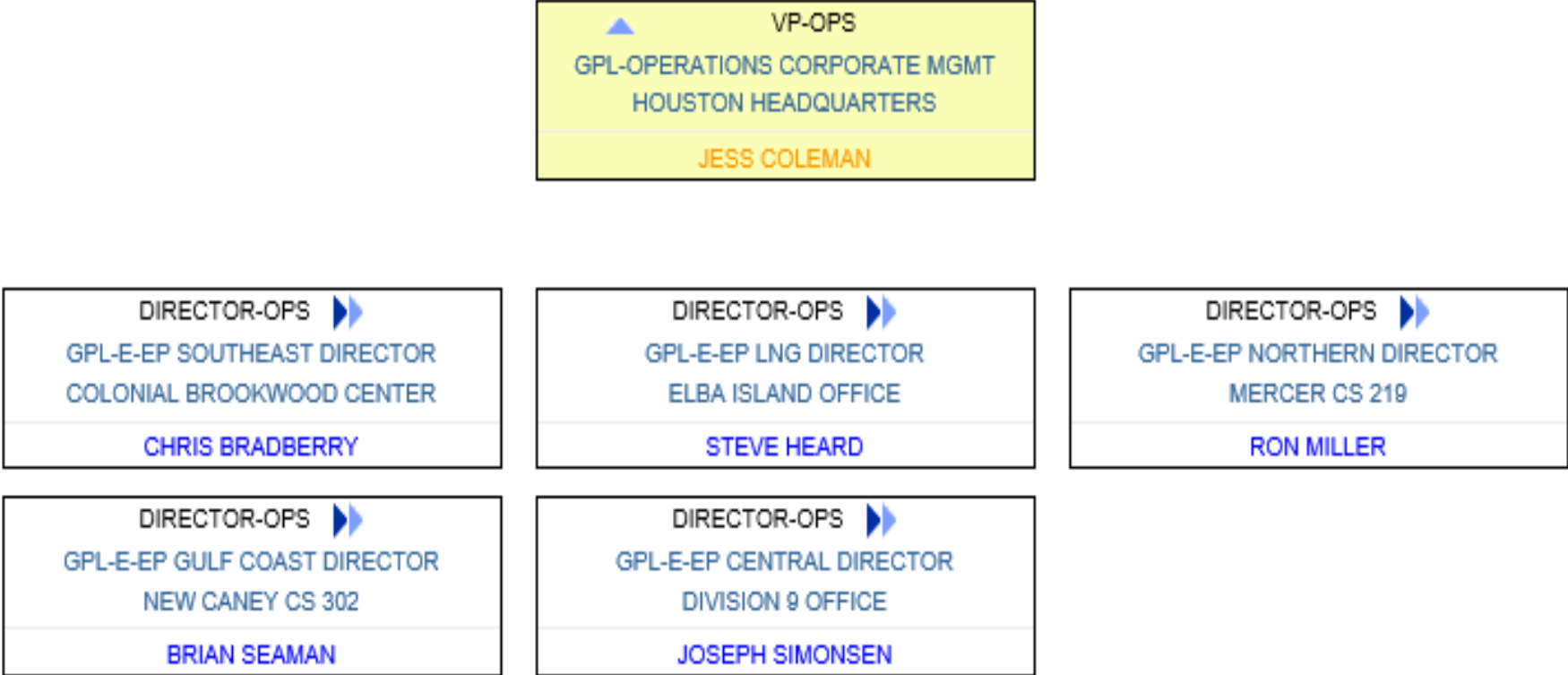
# 2024-2025 Northeast Pre-Winter Operations Meeting

November 2024

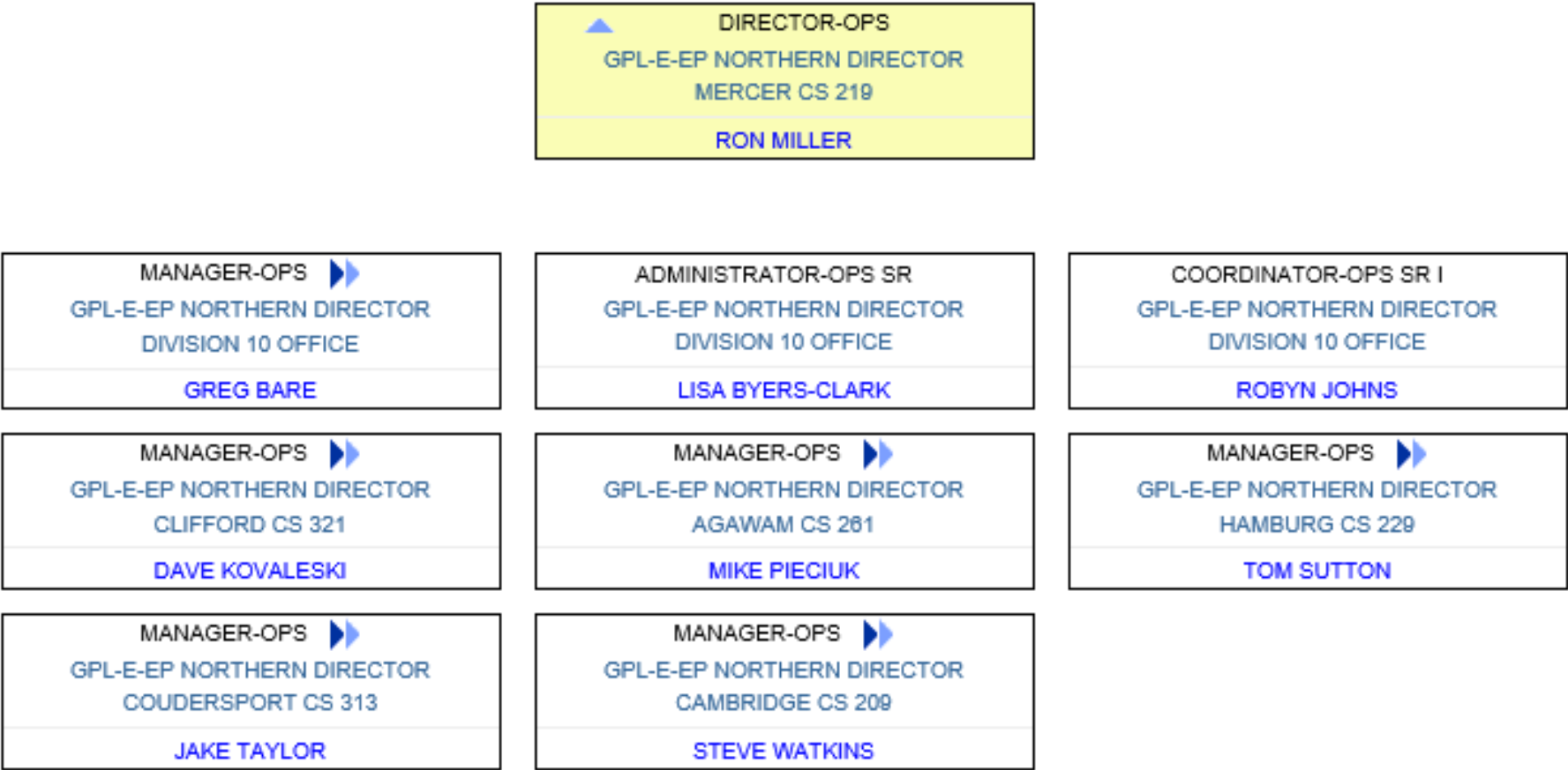


**OPERATIONS UPDATE**

# Operations Organizational Structure



# Operations Organizational Structure



# 2024/2025 Operational Focus and Winter Readiness

---

**Reliable Service** –Utilize System Flexibility, Make Further Investments, Refresh Critical Spare Parts Inventory, Monitor & Measure Performance & Take Action to Improve Continuously

**Quality Product & Services** – Measurement Accuracy (L&U) & Gas Quality Monitoring, Technician Response

**Scheduled Maintenance** - Maintenance prior to November 1; Compressor Station protective devices, borescope inspections and water wash, Calibration/Testing, Test run units (as applicable), Pipeline and meter station maintenance, Annual Valve Maintenance, Auto-close checks, Regulator and RV devices (slides attached)

**Winter Weather Preparation** - Inspect & test emergency equipment (i.e., generators, heaters, snow handling equipment, etc.), Contingency planning, Place personnel at key compressor stations, Communicate & coordinate with local customers.

**Gas Control Engagement** - Daily Morning Call (area, division, system), Gas control to Gas control, Pre-winter meetings with NE

- Segments inspected: 23
- Tools launched and received: 62
- Completed 127 anomaly digs and 10 DA projects
- 60+ Digs scheduled for 2025
- 23 Segment inspections planned for 2025
  
- We continue to look for innovative ways to reduce customer impact
  - Dent fatigue life analysis
  - Foreign crossing review, etc
  - Continued development of engineering analysis

**MAINTENANCE UPDATES**

## Planning Next Year - June through October for following year maintenance

- Discuss all known outages
  - Pipeline Integrity Management, planned compliance, preventative maintenance, and expansion projects
- Optimization - Consolidate or separate outages to reduce time and capacity impact to the market
- Critical outages for 1<sup>st</sup> half of coming year posted in the 4th quarter current year
- Full annual outage plan posted in the 1st quarter for the coming year

## Current year process

- Weekly and monthly meetings prior to flow month
- Incorporate new outages
- Re-optimize – Continuously consolidate or separate outages to reduce time and capacity impact to the market
- Post monthly and annual outage reports



# Outage Postings Location



Shortcuts linked directly on the TGP home page updated regularly

Interstate Other Midstream Informational Postings Customer Information Contact Us Login

**Recent Notices (See Info Postings for all notices)**

**OFO**  
Jul 29 Imb Warning At Transco Rivervale Lifted  
Jul 27 Imbalance Warning At Transco Rivervale  
Page: [1] 2

**Planned Service Outage**  
Aug 15 Tgp Outage Impact Report  
Aug 14 Mlv 524-2 To Mlv 527-2 New Meter Hot Tap  
Page: [1] 2 3

**Capacity Constraints(FM)**  
Aug 15 Ant Pip Restrictions Seg 204 Bh 9-1-24  
Aug 08 Ant Del Restriction To Blenville 8-10-24

**Other Critical**  
Aug 15 Restrictions For 08-15-2024 1d3  
Aug 15 Restrictions For 08-16-2024 Ec  
Page: [1] 2 3

**Non-Critical Notices**  
Aug 15 Successful Bidder - Os #1390  
Aug 15 Market Net Pipeline Position Notice  
Page: [1] 2 3

**Open Seasons (See Info Postings for all notices)**

Aug 15 Successful Bidder - Os #1390  
Aug 15 Successful Bidder - Os #1390  
Aug 13 Request For Proposal  
Page: [1] 2  
Open Season Documents

**Service Programs**

No Service Programs

**Other Postings**

**All Notices**  
Critical Notices  
Non-Critical Notices

**Operating Information**  
Outage Impact Report  
Maintenance Outages (Excel)

**Other Information**  
Training Documents (DART)  
Training Videos (DART)  
System Maps

**System Constraints (mouse over the map hotspots to view data)**

Highlight Locations      Locs At/Near Capacity

Current Gas Day      Tomorrow's Gas Day

**LEGEND**  
Location  
Constraints  
≤2% Available  
No Data

**DISCLAIMER:** The summary information contained in this graphical display is a sampling of points for informational purposes only. This display should not be relied on by shippers in making or confirming commercial transactions. For a listing of available capacity please go to the capacity link under Informational Postings.

**Weather Forecast data from weather.gov**

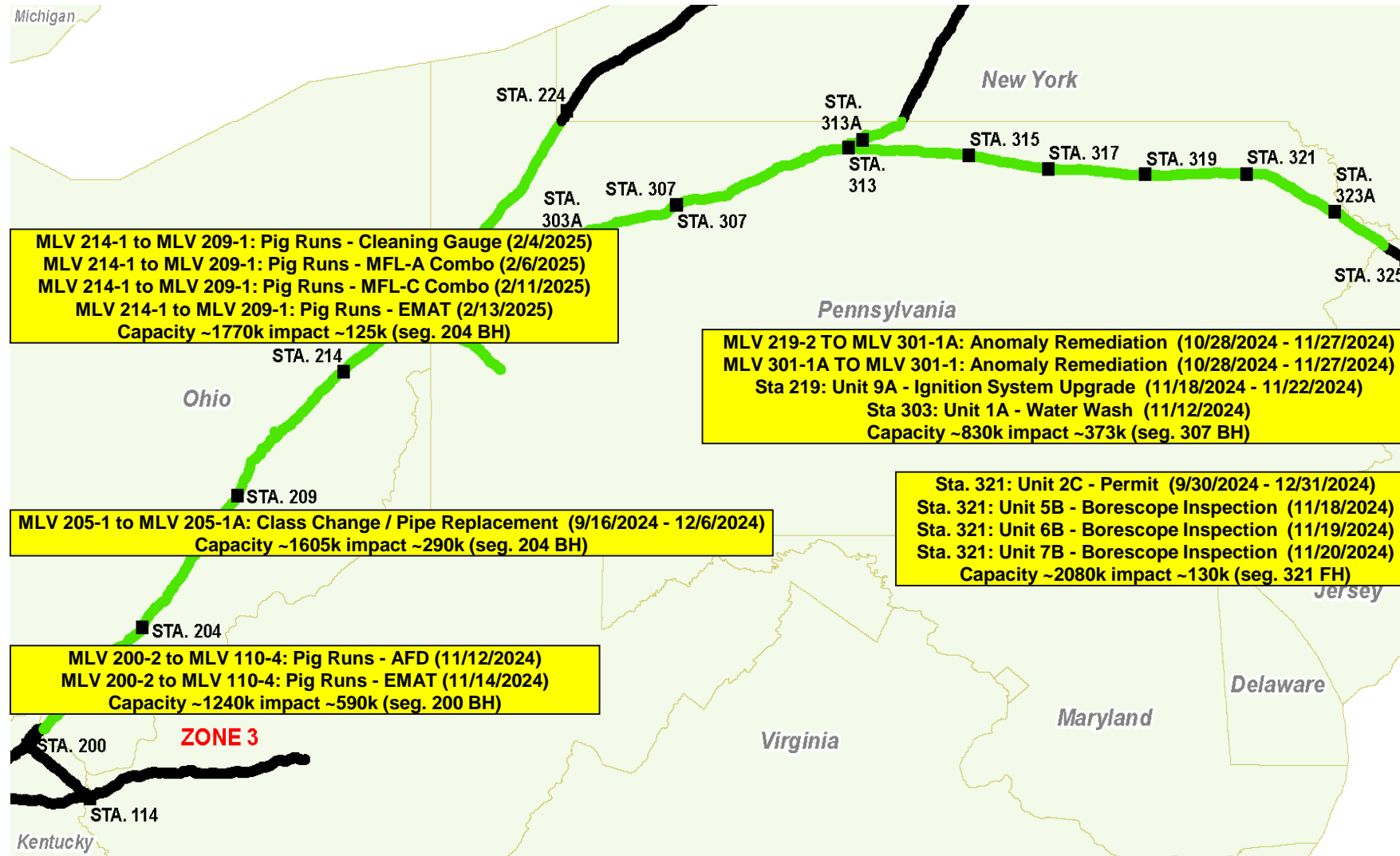
Boston  
Buffalo  
Hartford  
New York  
Pittsburgh  
Houston  
Nashville  
New Orleans

**On Call Assistance**

ROW/Land Inquiries	(800) 781-4152
Scheduling Hotline	(713) 420-4999
Commercial Hotline	(713) 420-4135
Gas Control Hotline	(800) 231-2800
Contract Mgmt. Hotline	(713) 420-3434

Email Us

# Zone 4 (November - February)



MLV 214-1 to MLV 209-1: Pig Runs - Cleaning Gauge (2/4/2025)  
 MLV 214-1 to MLV 209-1: Pig Runs - MFL-A Combo (2/6/2025)  
 MLV 214-1 to MLV 209-1: Pig Runs - MFL-C Combo (2/11/2025)  
 MLV 214-1 to MLV 209-1: Pig Runs - EMAT (2/13/2025)  
 Capacity ~1770k impact ~125k (seg. 204 BH)

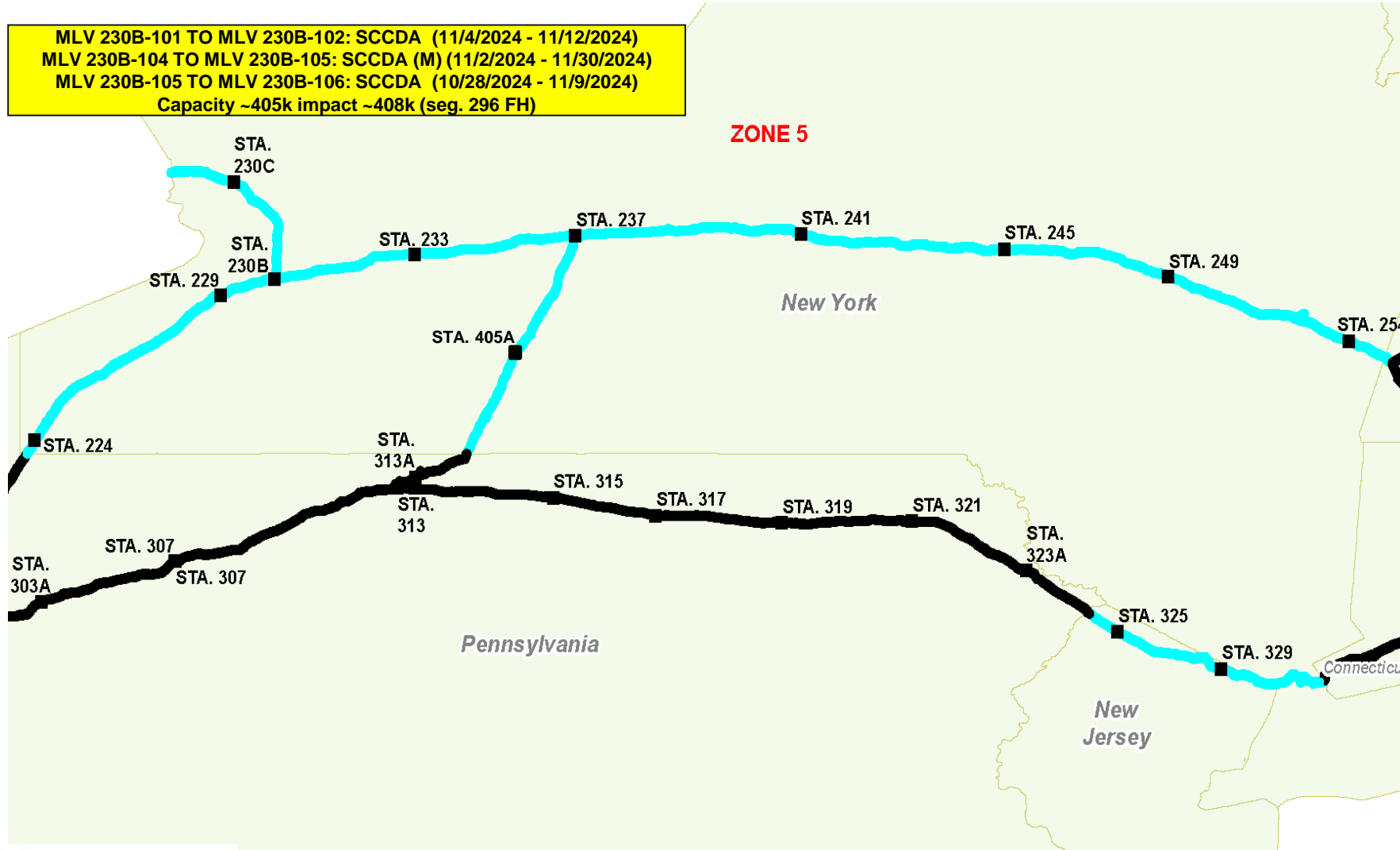
MLV 219-2 TO MLV 301-1A: Anomaly Remediation (10/28/2024 - 11/27/2024)  
 MLV 301-1A TO MLV 301-1: Anomaly Remediation (10/28/2024 - 11/27/2024)  
 Sta 219: Unit 9A - Ignition System Upgrade (11/18/2024 - 11/22/2024)  
 Sta 303: Unit 1A - Water Wash (11/12/2024)  
 Capacity ~830k impact ~373k (seg. 307 BH)

Sta. 321: Unit 2C - Permit (9/30/2024 - 12/31/2024)  
 Sta. 321: Unit 5B - Borescope Inspection (11/18/2024)  
 Sta. 321: Unit 6B - Borescope Inspection (11/19/2024)  
 Sta. 321: Unit 7B - Borescope Inspection (11/20/2024)  
 Capacity ~2080k impact ~130k (seg. 321 FH)

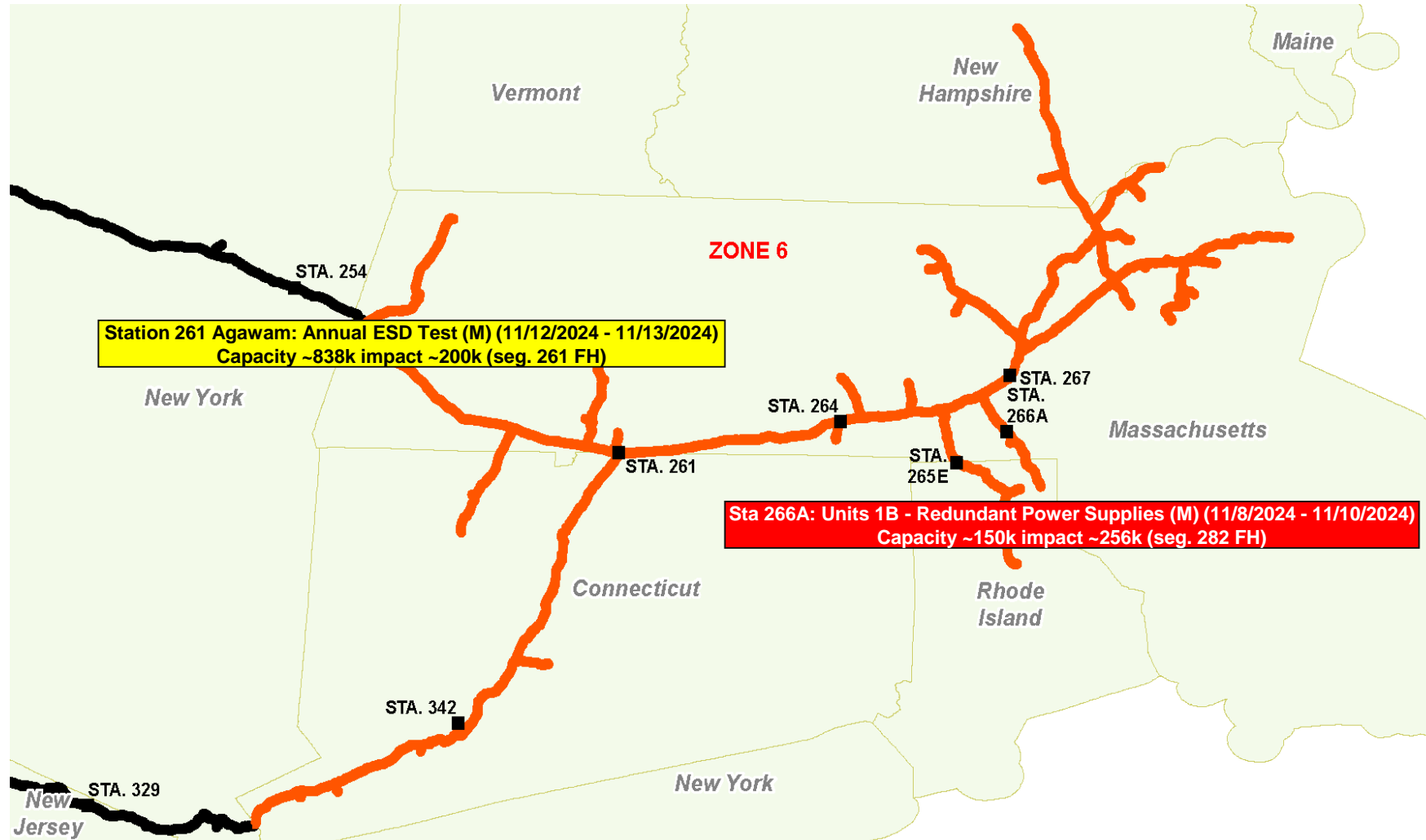
MLV 205-1 to MLV 205-1A: Class Change / Pipe Replacement (9/16/2024 - 12/6/2024)  
 Capacity ~1605k impact ~290k (seg. 204 BH)

MLV 200-2 to MLV 110-4: Pig Runs - AFD (11/12/2024)  
 MLV 200-2 to MLV 110-4: Pig Runs - EMAT (11/14/2024)  
 Capacity ~1240k impact ~590k (seg. 200 BH)

# Zone 5 (November - February)



# Zone 6 (November - February)

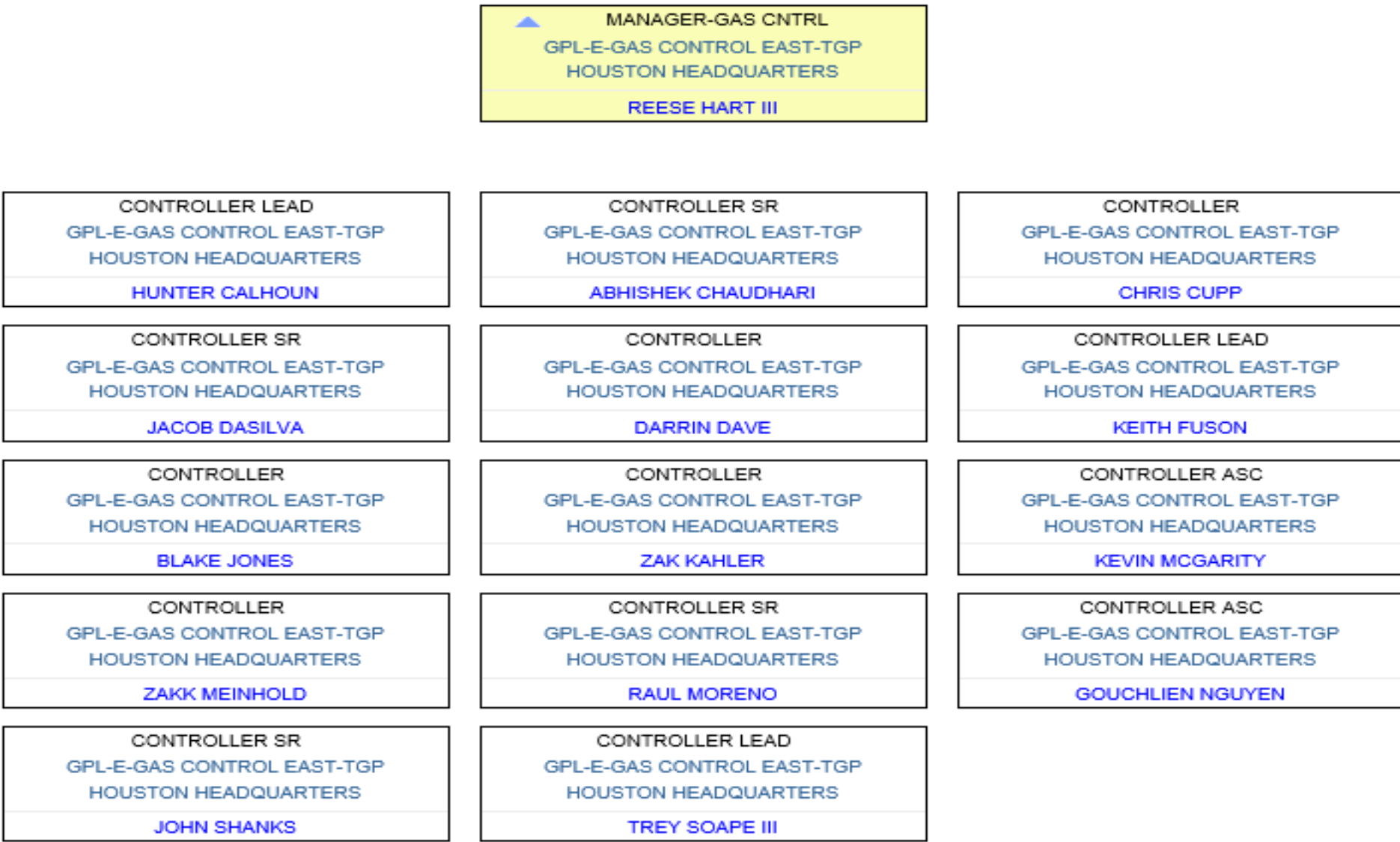


**GAS CONTROL ORGANIZATIONAL STRUCTURE**

# Gas Control Organizational Structure



# Gas Control Organizational Structure

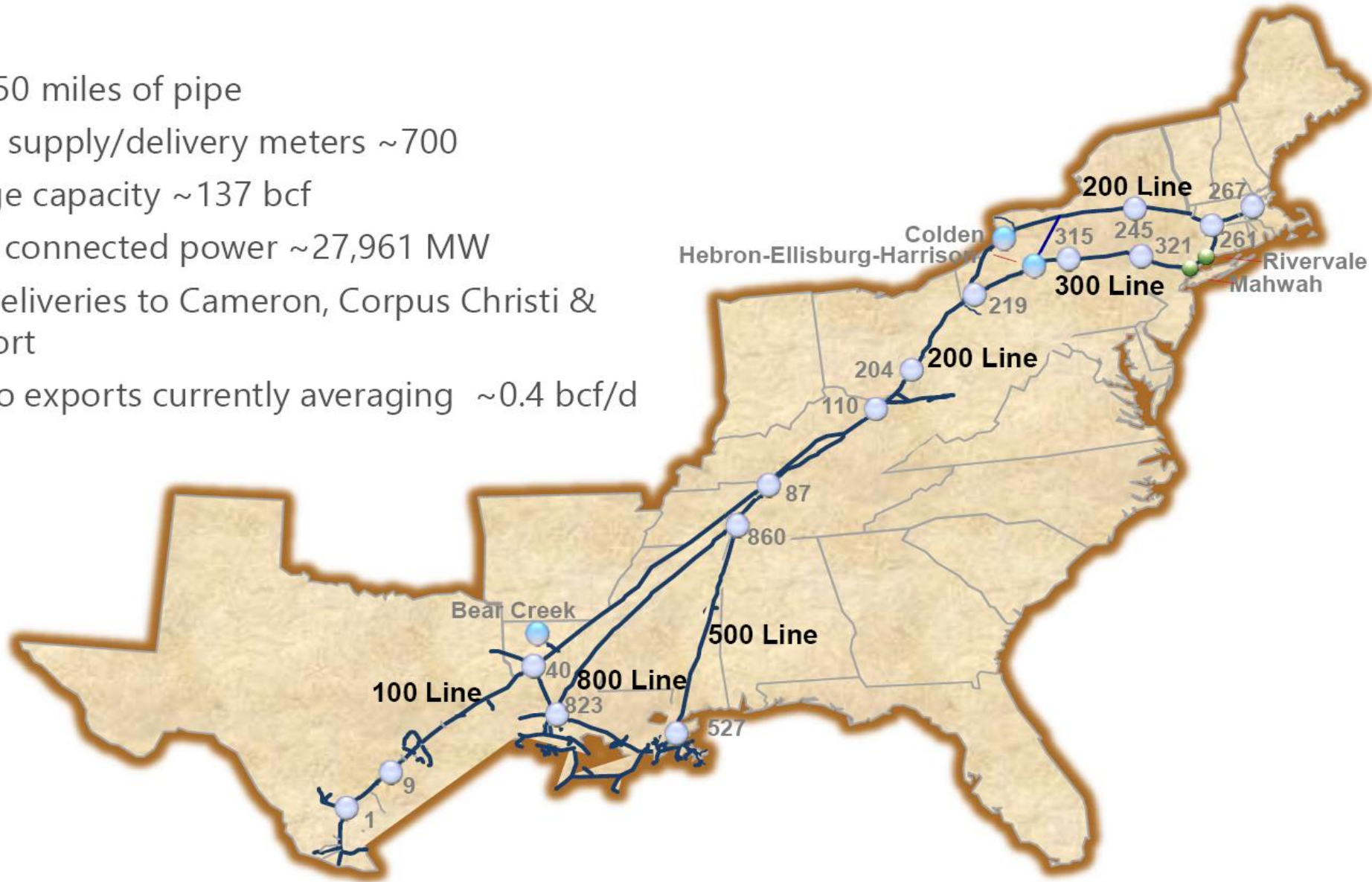


**SYSTEM OPERATIONS OVERVIEW**



# TGP System Overview

- ~11,750 miles of pipe
- Active supply/delivery meters ~700
- Storage capacity ~137 bcf
- Direct connected power ~27,961 MW
- LNG deliveries to Cameron, Corpus Christi & Freeport
- Mexico exports currently averaging ~0.4 bcf/d



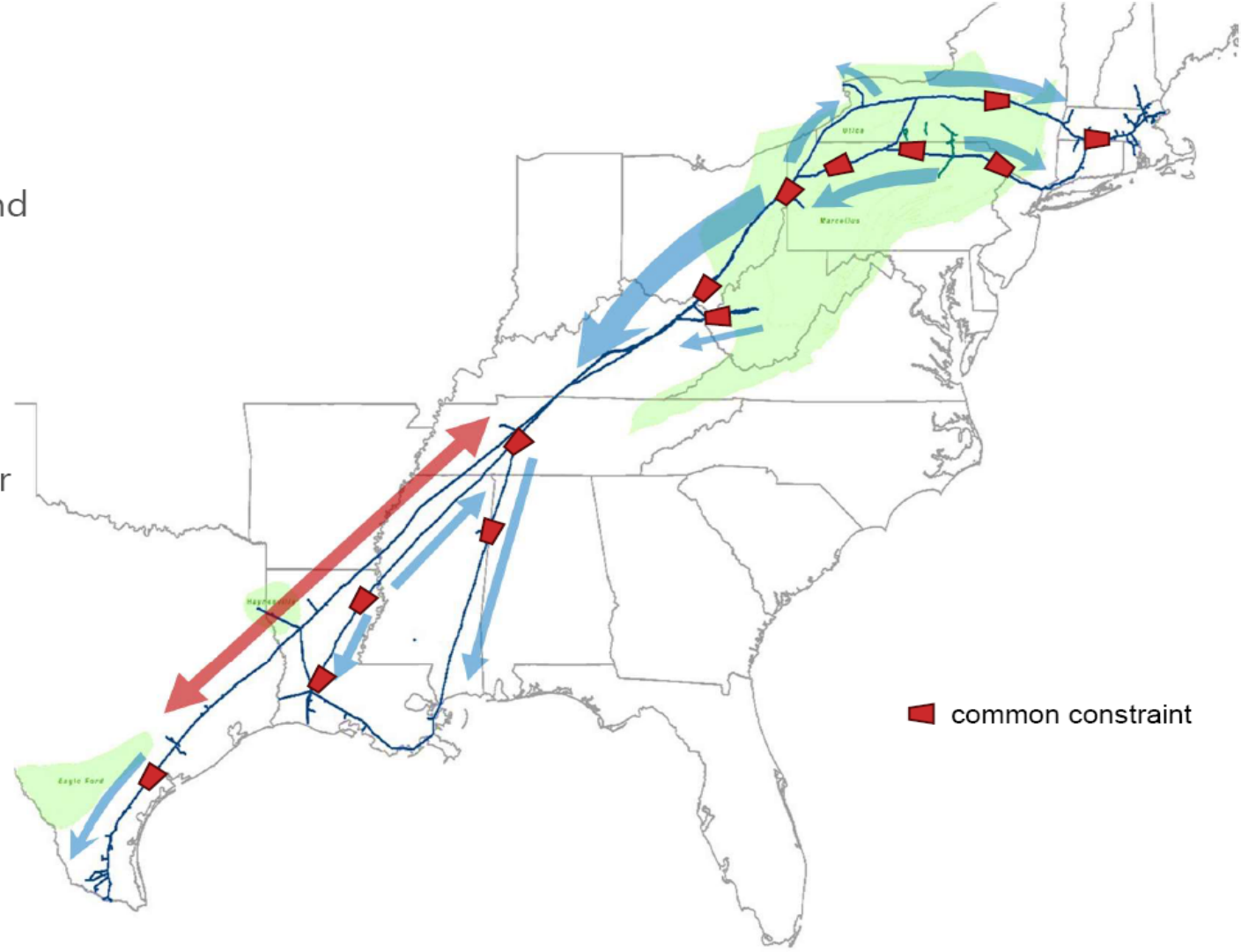
# System Flows

## Remains the same

- High utilization moving gas from Marcellus/Utica, both South and East
- Traditional bottleneck into New England remains
- Steady exports to Canada

## Recent Trends

- Power growth – PJM, SERC in particular
- Growing LNG exports
- Texas becoming a swing market



- **SUPPLY**

- Permian area continues to be growth markets along Gulf Coast
- Marcellus/Utica production remains strong
- Stagecoach Gas Services continues to improve

- **DEMAND**

- Steady LNG increase
- Mexico: Flows increased this year compared to last year
- Power: continued gasification of electric grid realized on TGP

**SUMMER 2024 LOOK BACK**

- Overview

- System wide throughput increases slightly over summer 2023
- Mild winter leaving storage inventories high but slightly down from this time last year
- Maintenance planning and coordination continue to be challenging

- Demand

- System wide throughput down overall due to drop off in system deliveries to pipeline interconnects (-11%); Northeast flows down by 5%
- On system power demand is up slightly (3%); Northeast flows down by 9%
- LDC demand is up by (3%); Northeast flows up by 24%

# Summer System Wide Flows



	<u>2022</u>	<u>2023</u>	<u>2024*</u>	<u>Change</u>
LDC	1,076	1,063	1,093	+3%
Power	1,785	1,842	1,896	+3%
Pipeline Interconnects	5,343	5,079	4,515	-11%
Mexico	490	597	597	0%
LNG	1,371	1,310	1,208	-8%
Industrial	47	63	65	+3%
<b>TOTAL</b>	<b>10,112</b>	<b>9,954</b>	<b>9,374</b>	<b>-6%</b>

Volumes are MDth/d

\*Through 10/22/24

# Summer Northeast Market Flows



	<u>2022</u>	<u>2023</u>	<u>2024*</u>	<u>Change</u>
LDC	871	668	877	+24%
Power	944	992	910	-9%
Pipeline Interconnects	2,996	2,948	2,800	-5%
TOTAL	4,811	4,608	4,587	

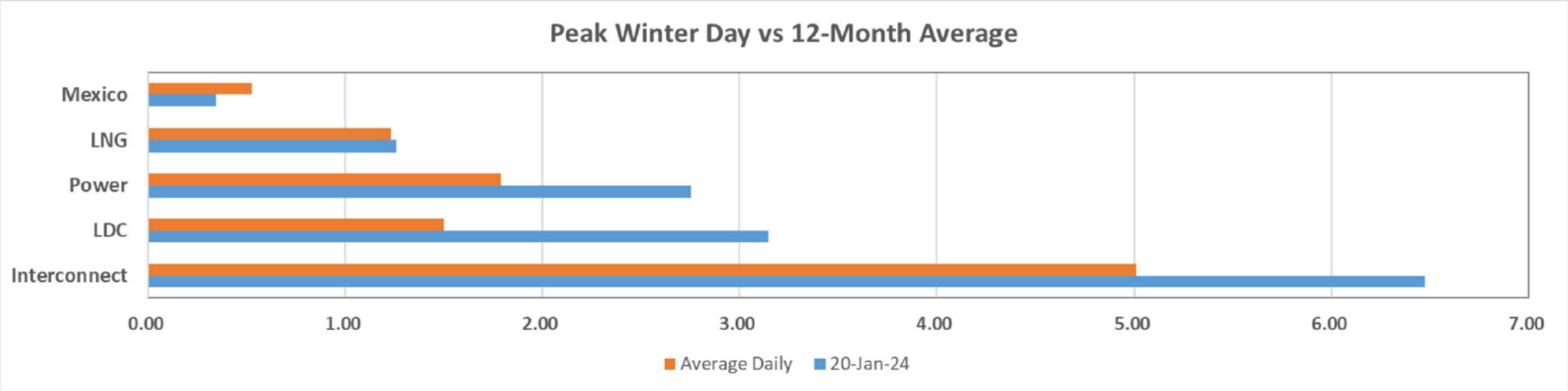
Volumes are MDth/d  
Volume through 10/22

**WINTER 2023 – 2024 LOOK BACK**



# Winter Review

- 2023/2024 was similar to prior winter – overall a mild winter System-wide throughput virtually flat year over year averaging ~11.0 MMDth/d for November – March period
- Winter Peak was ~13.71 MMDth on January 20, 2024; 0.7 MMDth greater than prior winter peak
- Power Demand Peak was ~2.95 MMDth/d on January 17, 2024; 0.1 MMDth higher than prior winter peak
- Storage inventory over 70% full exiting winter (3/31) compared to 59% in 2023



# Winter 2023-2024 System Wide Flows



	<u>2021-2022</u>	<u>2022-2023</u>	<u>2023-2024</u>	<u>Change</u>
LDC	2,089	1,936	2,030	+4%
Power	1,558	1,627	1,647	+1%
Pipeline Interconnects	5,593	5,835	5,531	-5%
Mexico	565	382	437	+14%
LNG	1,705	1,218	1,282	+5%
Industrial	50	63	71	+14%
<b>TOTAL</b>	<b>11,560</b>	<b>11,061</b>	<b>10,998</b>	<b>-.5%</b>

Volumes are MDth/d

# Winter 2023-2024 Northeast Market Flows



	<u>2021-2022</u>	<u>2022-2023</u>	<u>2023-2024</u>	<u>Change</u>
LDC	1,729	1,610	1,666	+3%
Power	829	937	802	-16%
Pipeline Interconnects	3,209	3,152	3,231	+2%
TOTAL	5,767	5,699	5,699	

Zones 4, 5 and 6  
Volumes are MDth/d

- Anticipate continued high utilization system wide
  - Winters won't stay mild forever
  - Northeast segments will continue to be constrained during winter
  - LNG demand is high utilization with no seasonality – increasing load factor in southern segments
  - Expansion projects add additional supply and market to the system
  
- Storage key to providing system flexibility
  
- Continued focus on maintenance planning to remain safe and reliable while limiting customer impacts as much as possible

**SCHEDULING UPDATE**

# Transportation Storage Services

## Organizational Structure



















### KINDER MORGAN

#### Eastern Region Scheduling Department

 <p><b>Gina Mabry</b> VP—Pipeline Administration Phone: (713) 420-3685 Cell: (281) 744-8666 Gina_Mabry@kindermorgan.com</p>	 <p><b>Katie Cornutt</b> Director—Pipeline Scheduling Phone: (713) 420-5648 Cell: (407) 902-8027 Katlynn_Cornutt@kindermorgan.com</p>
 <p><b>Adam Harris</b> Manager—Pipeline Scheduling Phone: (713) 420-2672 Cell: (281) 389-0024 Adam_Harris@kindermorgan.com</p>	 <p><b>Cathy Soape</b> Manager—Pipeline Scheduling Phone: (713) 420-3814 Cell: (713) 922-5083 Cathy_Soape@kindermorgan.com</p>

#### Tennessee Gas Pipeline Scheduling Team

DSRs		WEARs	
 <p><b>Walker Agnew, Jr.</b> Pipeline Scheduler II (713) 420-6059 ICE: wagnew Walker_Agnew@kindermorgan.com</p>	 <p><b>Susan Lopez</b> Pipeline Scheduler Sr. II (713) 420-3724 ICE: slopez3 Susan_Lopez@kindermorgan.com</p>	 <p><b>Mandey Allen</b> Pipeline Scheduler Sr. II</p>	
 <p><b>Brooke Ardoin</b> Pipeline Scheduler II (713) 420-1959 ICE: bardoin Brooke_Ardoin@kindermorgan.com</p>	 <p><b>Heather Mercado</b> Pipeline Scheduler Sr. I (713) 420-4639 ICE: hamercado Heather_Mercado@kindermorgan.com</p>	 <p><b>Ginger Bryan</b> Pipeline Scheduler Sr. II</p>	
 <p><b>Lauren Holcombe</b> Pipeline Scheduler Asc (713) 420-6281 ICE: laholcombe Lauren_Holcombe@kindermorgan.com</p>	 <p><b>Erin Mortimer</b> Pipeline Scheduler Sr. II (713) 420-5878 ICE: emortimer1 Erin_Mortimer@kindermorgan.com</p>	 <p><b>Nicole Lang</b> Pipeline Scheduler Sr. II</p>	
 <p><b>Mark Ferguson</b> Pipeline Scheduler Asc (713) 420-2534 ICE: marferguson Mark_Ferguson@kindermorgan.com</p>	 <p><b>Deb Shipman</b> Pipeline Scheduler Lead (713) 420-3088 ICE: dshipman1 Deb_Shipman@kindermorgan.com</p>	 <p><b>Jill Overman</b> Pipeline Scheduler Sr. II</p>	
 <p><b>Scott Holdener</b> Pipeline Scheduler Sr. I (713) 420-2237 ICE: scoholdener Scott_Holdener@kindermorgan.com</p>	 <p><b>Carla Vannoy</b> Pipeline Scheduler Sr. II (713) 420-8048 ICE: cvannoy Carla_Vannoy@kindermorgan.com</p>	 <p><b>Norma Villarreal</b> Pipeline Scheduler Sr. II</p>	
		 <p><b>Taeko Yoneyama</b> Pipeline Scheduler II</p>	

**Nominations and Scheduling Contact Information:**  
**(713) 420-4999 / TGPTransSvc@kindermorgan.com**

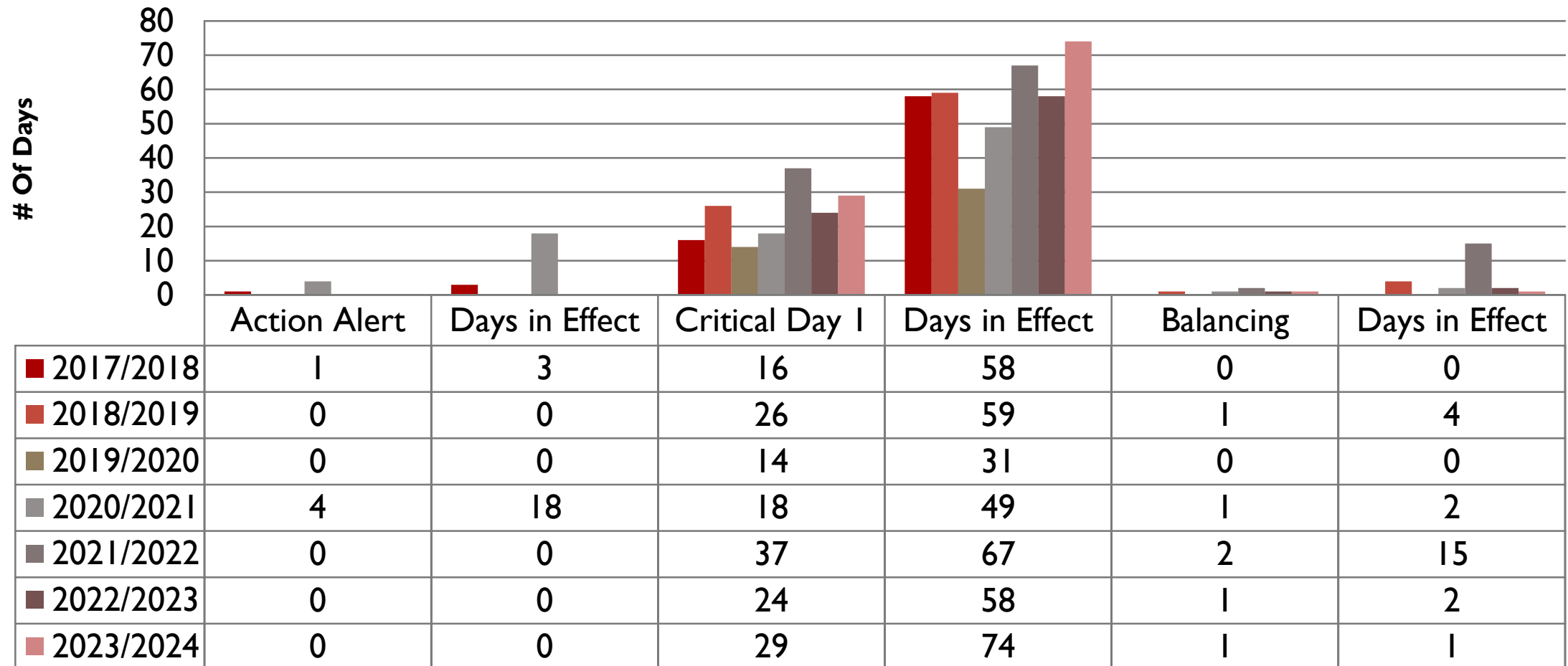
- System Considerations for Winter
  - More gas moving toward the Northeast
  - OFOs are likely for Northeast area for over-takes and under-deliveries
  - Scheduled maintenance coming to an end
    - Work with customers as operations allow on any remaining maintenance
  - Storage Utilization
    - Protect firm storage
  - Daily System flexibility to manage ***scheduled*** payback
    - Gas Control and Scheduling evaluate payback at each cycle to determine availability
    - TGP encourages customers to nominate payback in an effort to minimize customer cash out exposure when operational conditions allow

## WINTER RESTRICTIONS

Restriction Point Highly Utilized TGP Paths	Percentage Days Restricted (November - March)	Percentage Days Restricted (November - March)	Percentage Days Restricted (November - March)	Percentage Days Restricted (November - March)	Percentage Days Restricted (November - March)	Percentage Days Restricted (November - March)
	2018/2019	2019/2020	2020/2021	2021/2022	2022/2023	2023/2024
<b>Sta. 200/204</b>	0%	0%	38%	10%	0%	76%
<b>Sta. 245</b>	100%	100%	100%	99%	100%	100%
<b>Sta. 261</b>	85%	63%	54%	76%	70%	59%
<b>Sta. 267</b>	2%	0%	0%	0%	0%	0%
<b>MLV 268</b>	9%	3%	5%	36%	27%	13%
<b>MLV 273</b>	99%	70%	100%	100%	100%	100%
<b>Sta. 315 BH</b>	61%	37%	100%	98%	100%	100%
<b>Sta. 321</b>	81%	100%	100%	99%	100%	100%
<b>MLV 355 BH</b>	34%	16%	28%	40%	55%	52%
<b>Sta. 1 BH</b>	83%	17%	4%	4%	0%	13%
<b>Sta. 9 BH</b>	31%	55%	13%	1%	7%	0%
<b>Mahwah</b>	98%	100%	100%	5%	93%	96%
<b>Rivervale</b>	88%	6%	0%	0%	19%	1%



# WINTER SEASON OFOS – ZONES 4, 5 AND 6



## SUMMER RESTRICTIONS

Restriction Point Highly Utilized TGP Paths	Percentage Days Restricted (April – October)	Percentage Days Restricted (April – October)	Percentage Days Restricted (April - October)	Percentage Days Restricted (April - October)	Percentage Days Restricted (April - October)	Percentage Days Restricted (April - October)	Percentage Days Restricted (April - October)
	2018	2019	2020	2021	2022	2023	2024*
Sta. 200/204	67%	12%	44%	69%	69%	94%	47%
Sta. 245	98%	83%	94%	100%	100%	99%	100%
Sta. 261	49%	1%	14%	14%	14%	20%	20%
Sta. 267	10%	0%	0%	0%	0%	0%	0%
MLV 268	12%	0%	0%	0%	0%	0%	0%
MLV 273	17%	16%	66%	100%	100%	100%	100%
Sta. 315 BH	99%	70%	99%	96%	96%	98%	99%
Sta. 321	99%	63%	79%	100%	100%	99%	100%
MLV 355 BH	79%	23%	17%	74%	74%	10%	8%
Sta. 1 BH	80%	13%	17%	43%	43%	5%	1%
Sta. 9 BH	58%	22%	10%	5%	5%	4%	7%
Mahwah	50%	98%	89%	98%	98%	58%	95%
Rivervale	58%	68%	0%	1%	1%	0%	1%

**COMMERCIAL UPDATE**

**Park & Loan – Term (PAL-D)**  
ROPD & ROLD

**Attributes:**

- Lowest form Interruptible Services
- Invoiced on Total Scheduled volume

**Offerings:**  
Term  
Balancing

**Park & Loan – Term (PAL-T)**  
ROPT & ROLT

**Attributes:**

- Highest form Interruptible Services
- Invoiced on Total Quantity (TQ)

**Offerings:**  
Term  
Balancing  
Operational

**Term**

- Based on Market Price
- Cash, Balmo and Forwards
- Timing, Location and quantity based on operational flexibility

**Balancing**

- Acts like synthetic storage
- Price varies based on turns, locations and term
- Yearly and Monthly terms

**Operational**

- Contracted on a customer needs basis as operational flexibility allows



# Commercial Optimization Organization



## On Call Assistance

- Commercial Hotline** (713) 420-4135
- Scheduling Hotline** (713) 420-4999
- Gas Pipeline Control Hotline** (800) 231-2800
- Contract Mgmt. Hotline** (713) 420-3434
- DART Non-Security Issues** (713) 420-4999

**Lakann James**

**Britton Burr**

**Kevin Cofer**

**Jermiah Ortiz**

**Scott Minear**

**Greg Pollard**

**Allizon Kczynski**

**Aaron O'Reilly**

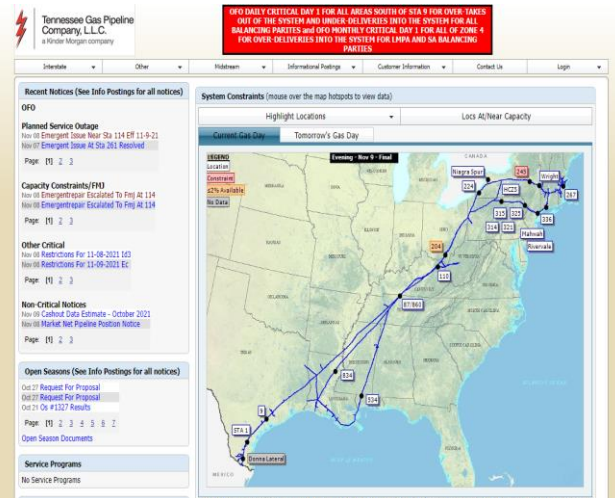
**Chris Brown**

**Adrienne Reid**

**Chris Lawson**

**Pipelines marketed daily by the Bidroom Group**

- Tennessee Gas**
- Stagecoach Storage**
- Arlington Storage**
- MEP**
- KMLP**
- SNG**



**Other Postings**

- All Notices**
  - [Critical Notices](#)
  - [Non-Critical Notices](#)
- Operating Information**
  - [Outage Impact Report](#)
  - [Maintenance Outages \(Excel\)](#)
- Other Information**
  - [Training Documents \(DART\)](#)
  - [Training Videos \(DART\)](#)
  - [System Maps](#)



## Gas Control

**24 hour and emergency**  
**800-231-2800**

Reese Hart – Manager  
713-420-4774  
Cell – 832-248-2937

Layne Sanders – Director  
713-420-5024  
Cell – 832-563-5024

Brian Merchant - VP  
713-420-5867  
Cell – 713-206-0590

## Transportation and Storage

**24-hour Scheduling Hotline**  
**713-420-4999**

Cathy Soape – Manager  
713-420-3814  
Cell – 713-922-5083

Adam Harris – Manager  
713-420-2672  
Cell – 281-389-0024

Katie Cornutt - Director  
713-420-5648  
Cell – 407-902-8027

Gina Mabry – VP  
713-420-3685  
Cell – 281-744-8666

## Commercial/Marketing

**Commercial Hotline**  
**713-420-4135**

Jim McCord – Account Director  
713-420-5611  
Cell - 832-655-4043

Ruth Hearn – Director, Acct Svcs  
713-420-3881  
Cell- 281-352-7975

Lakann James – Director, Optimization  
713-420-4882  
Cell – 405-613-8281

Mark Wilson – VP  
713-420-7205  
Cell – 205-447-2589

## Field Operations

Ron Miller– Director (Northeast)  
724-662-6422  
Cell – 716-378-1840

Greg Bare – Manager (Div 10)  
860-763-6034  
Cell – 860-966-8577

Mike Pieciuk – Manager (Northeast)  
413-821-2022  
Cell – 203-441-2834

Jess Coleman– VP Ops  
713-420-4501  
Cell – 701-648-9361