



Delivering Energy to Improve Lives

El Paso Natural Gas Pipeline 2024 Winter Preparedness

October 29, 2024

Dan English
Lead Controller, Gas Control
(EPNG/Mojave/Sierrita)

Kinder Morgan Infrastructure Portfolio



Delivering Energy. Improving Lives

Largest U.S. natural gas transmission network

- ~66,000 miles of natural gas pipelines move ~40% of U.S. natural gas production
- Have interest in 702 bcf of working storage capacity, ~15% of U.S. capacity

Largest U.S. independent refined products transporter & terminal operator

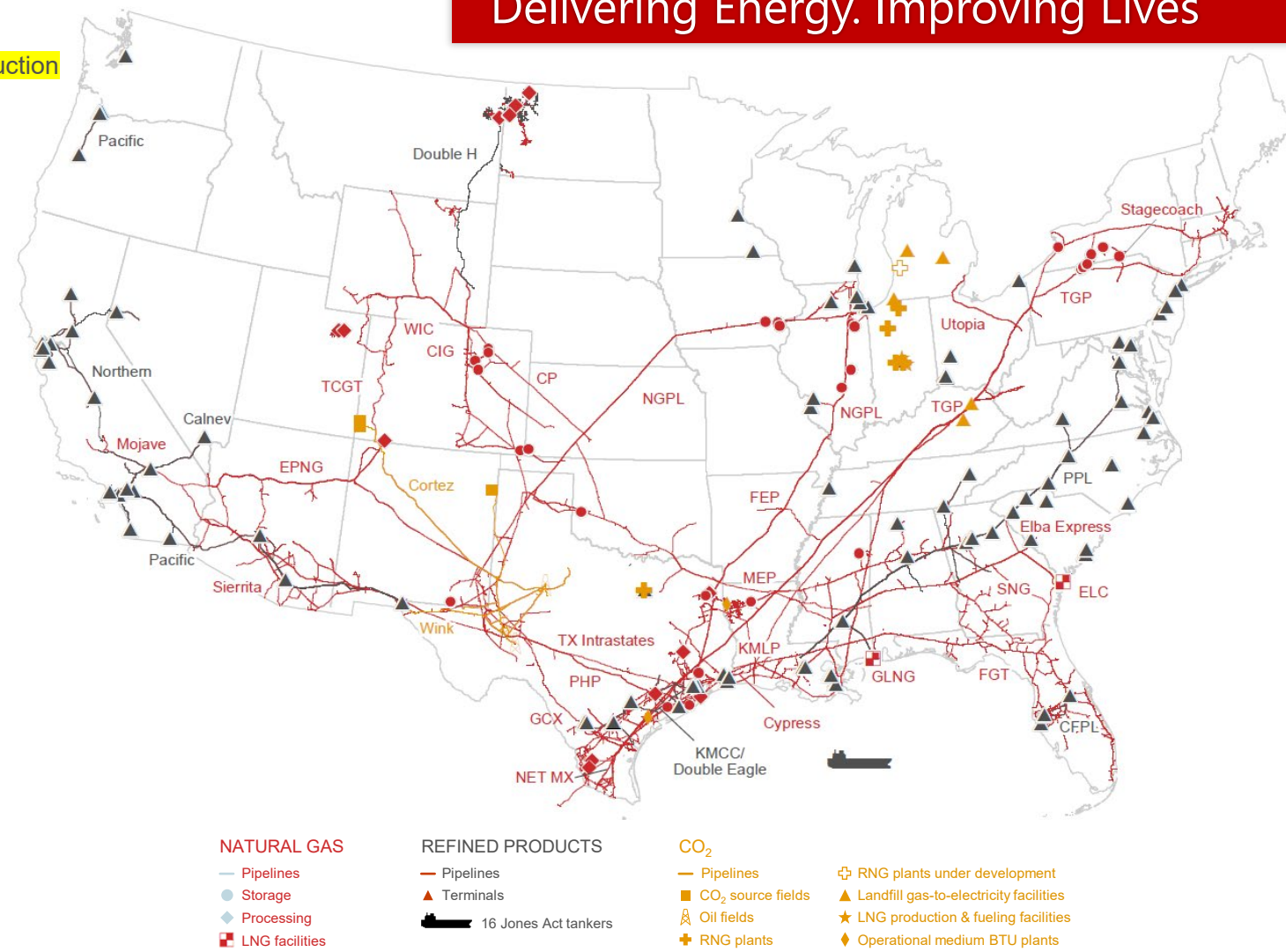
- Transport ~1.7 mmbbl of refined products to coastal demand markets
- ~9,500 miles of refined products and crude pipelines
- 139 terminals & 16 Jones Act vessels
- 135 mmbbl of total liquids storage capacity

One of the largest CO₂ transporters in the U.S.

- ~1,500 miles of CO₂ pipelines with transport capacity of ~1.5 bcfd
- Produce and transport CO₂ for enhanced oil recovery

Growing Energy Transition Portfolio

- Up to 6.4 bcf^(a) of RNG production capacity by 2H 2024



BUSINESS MIX



Note: Volumes per 2024 budget. Business mix based on 2024 budgeted Total Adjusted Segment EBDA. See Corporate Items and Non-GAAP Financial Measures & Reconciliations.

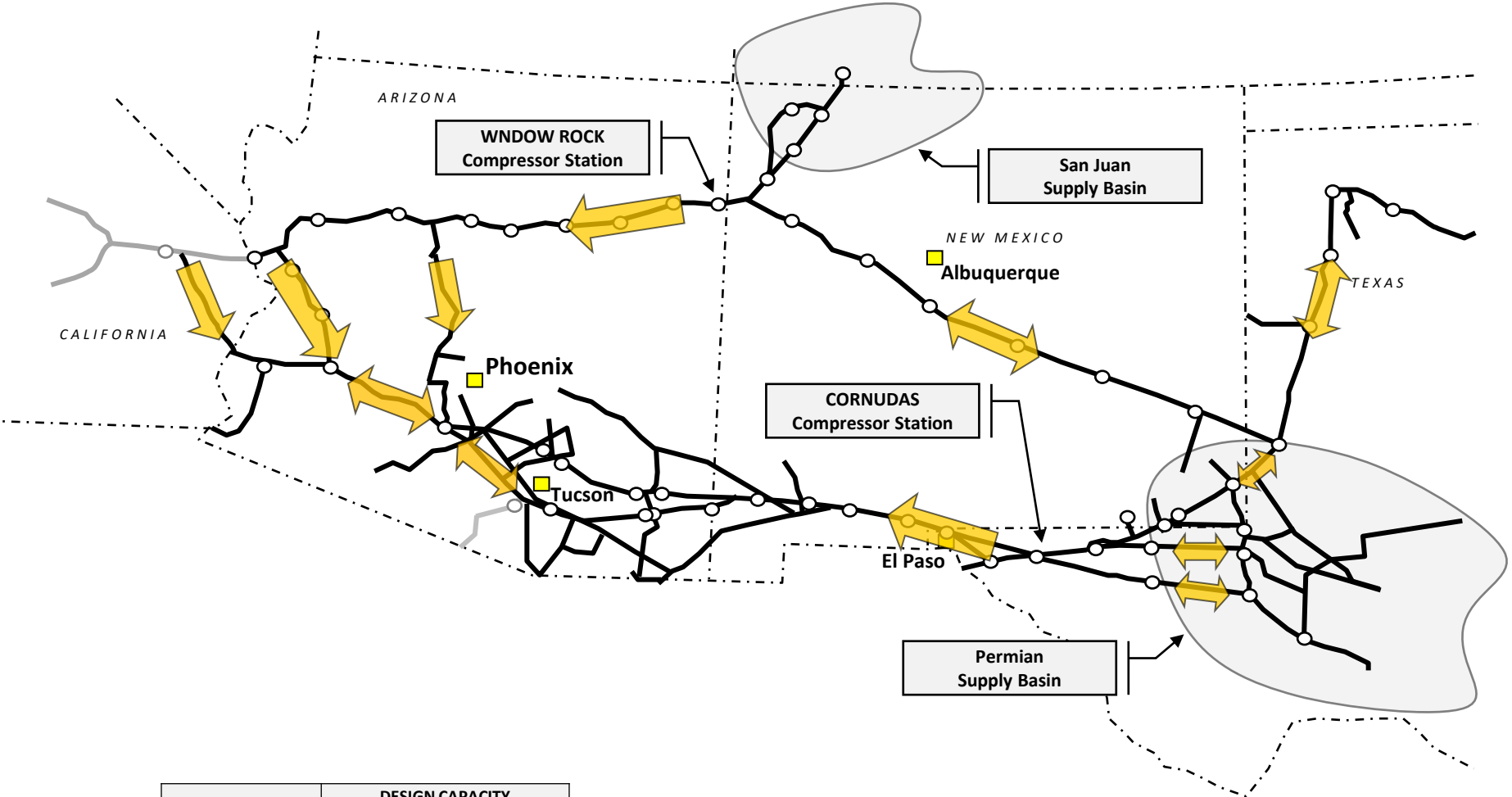
a) Annual capacity at KM share.

b) Refined Products includes 14% from our Products Segment and 12% from our Terminals Segment.

Operations Overview

EPNG System Overview

Supply Locations and Flow Direction



El Paso Natural Gas (EPNG) is a pipeline system which transports natural gas from the San Juan, Permian and Anadarko basins to California, Arizona, Nevada, New Mexico, Oklahoma, Texas and Northern Mexico. EPNG also owns approximately 44 billion cubic feet of underground working natural gas storage capacity in Southeast New Mexico.

EPNG estimates its winter day, sustainable mainline peak day capacity as measured at Window Rock and Cornudas as **4,882 MMcfd**.

The **Mojave Pipeline** is a pipeline system that connects with the EPNG system near Topock, Arizona, Cadiz, California, the Transwestern systems in Arizona, and Kern River Gas Transmission Company in California.

The **Sierrita Gas Pipeline (Sierrita)** is a pipeline system that extends from the El Paso Natural Gas pipeline system, near Tucson, Arizona, to the United States-Mexico border near Sasabe, Arizona.

CONSTRAINT	DESIGN CAPACITY [MMcf/d]
Cornudas	2,535
Window Rock	2,348

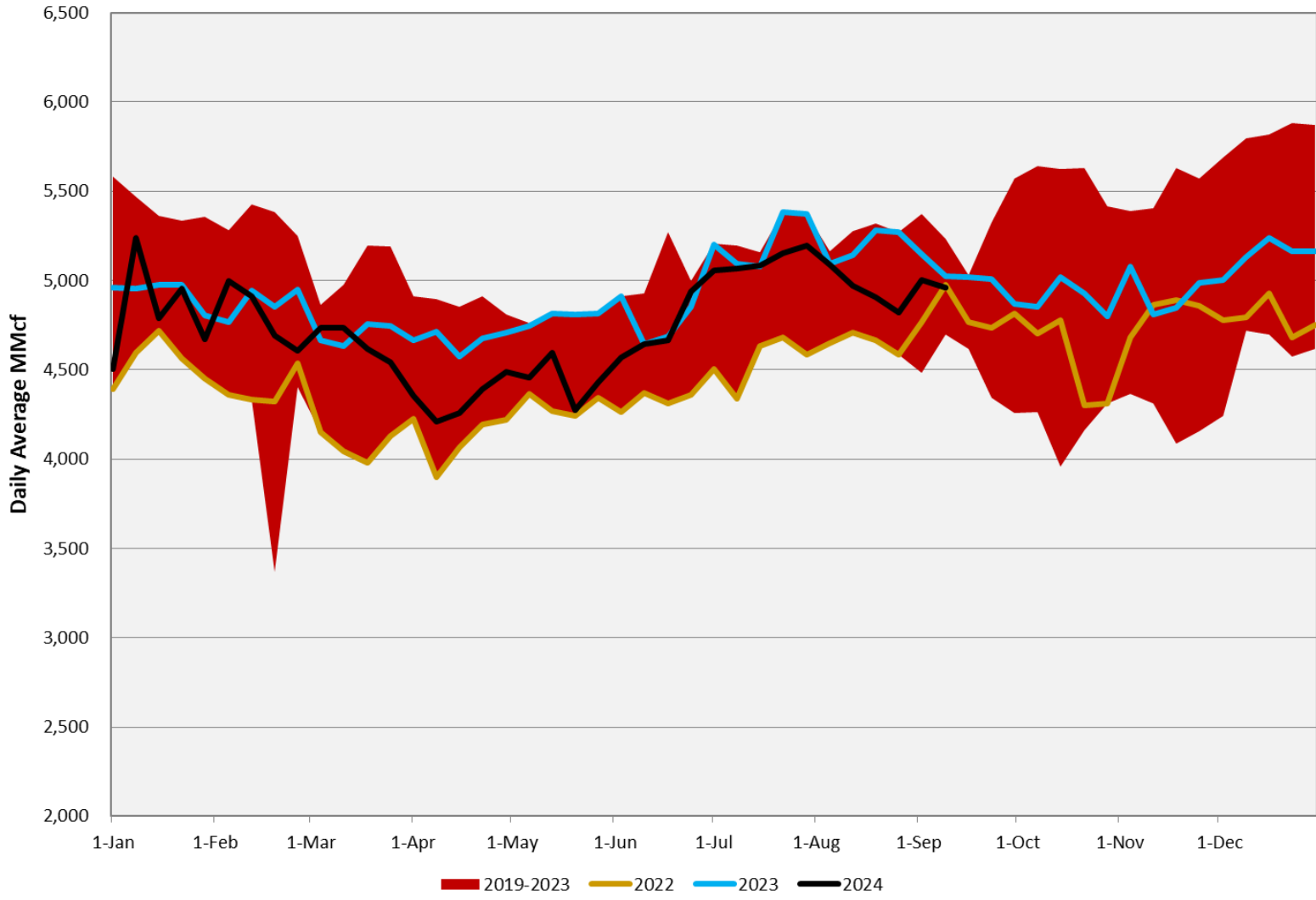
Volumes based on 2023 Annual Peak Day Capacity Statement

EPNG Total System

2019-2024 Throughput Trends (MMcf/d)



EPNG Total Throughput

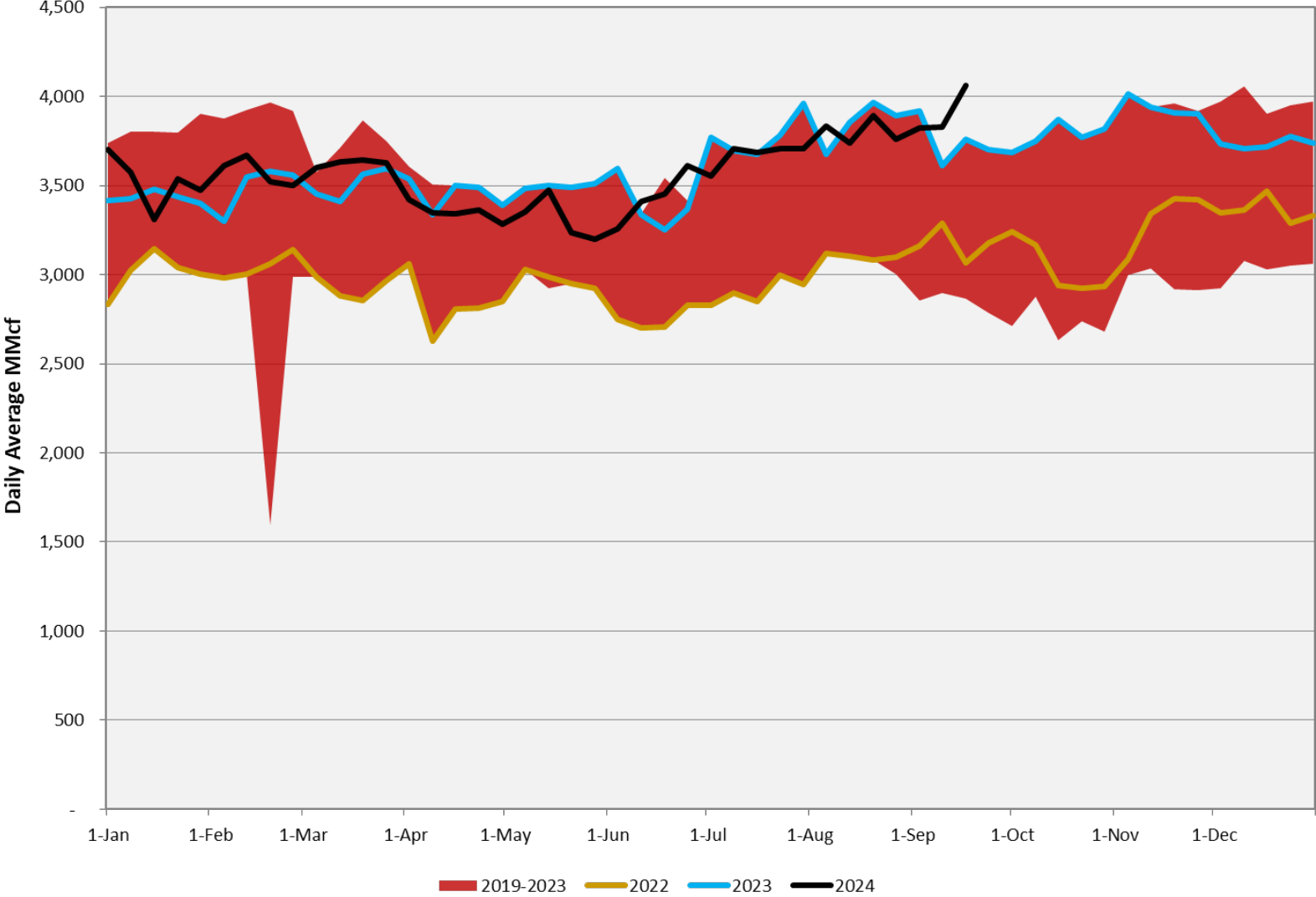


Permian Basin Receipts

2019-2024 Trends (MMcf/d)



EPNG Permian Basin Receipts

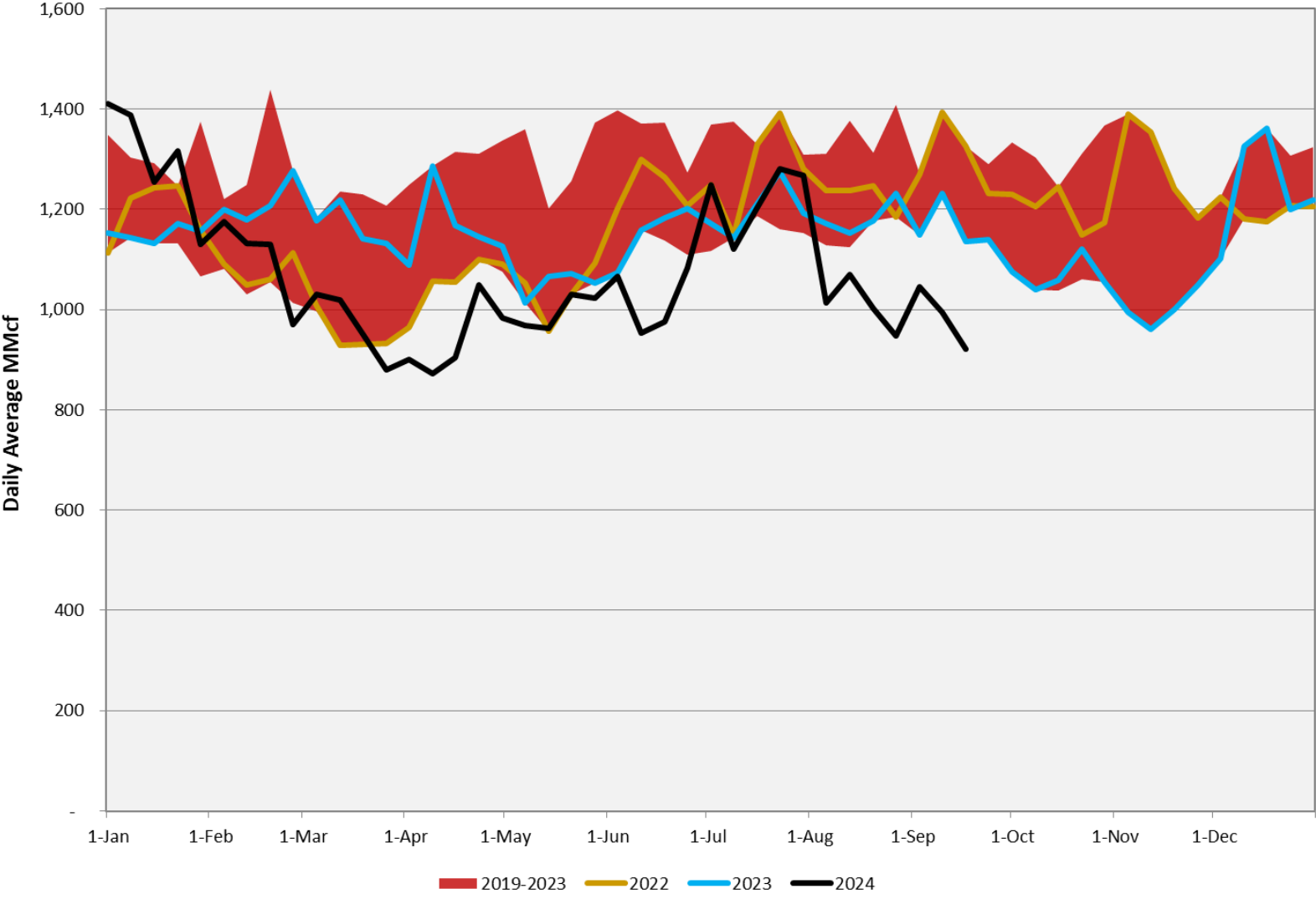


San Juan Basin Receipts

2019-2024 Trends (MMcf/d)



EPNG San Juan Basin Receipts



Winter Preparedness

- Staffing
 - Gas Control is 24 x 7 x 365.
 - Field technicians are on-site or on-call.
- Communication and Coordination
 - Customer-specific winter preparedness meetings or communications.
 - Monitor Weather Forecast.
 - Conference Calls between Gas Control and Operations to discuss preparations.
 - Shipper and Stakeholder Mass Communication via EBB notices.
 - Shipper-Specific Communications.
 - Over communicate regarding Weather Forecasts.
- Operational Response
 - Multiple flow paths for supply to reach the market.
 - Access to supply area storage: Washington Ranch, Keystone Gas Storage and Merchant Ranch Storage.
 - EPNG has developed excellent working relationships with both affiliated and non-affiliated interconnecting pipelines which provide additional layers of contingency management in responding to emergency situations.

Emergency Communications

- Shipper and Stakeholder Mass Communication
 - EBB Notices
 - Emails to shipper-maintained group email addresses
 - Telephone message sent by EPNG to emergency contacts
 - System Status Hotline (1-855-762-0100) parties can call for a recorded status of the system (updated as needed throughout an event)
- Standard critical notice to promote quicker action
- Banner on internet homepage to alert users to an emergency

Maintenance Planning Process and Communications

Annual Maintenance Planning Process

- July/August – Process Begins
 - Review of annually recurring maintenance
 - Development of Pipeline Integrity project list for the next year.
 - Development of additional O&M and project related maintenance outages for the next year.
- October
 - Gas Control preliminary review.
 - Project Planning Meeting with Project Engineering , Pipeline Engineering and Operations to review global schedule.
- November
 - Gas Control Review of Global Schedule .
 - Operations meetings/concalls to resolve scheduling conflicts.
 - Preliminary capacity impact analysis by System Design for larger outages.
 - Approval of Annual Plan.
- Communication to Customers
 - December 15 - Annual Plan for 1st Quarter posted to EBB.
 - Mid-March - Annual Plan updated for the remainder of the year posted to the EBB.

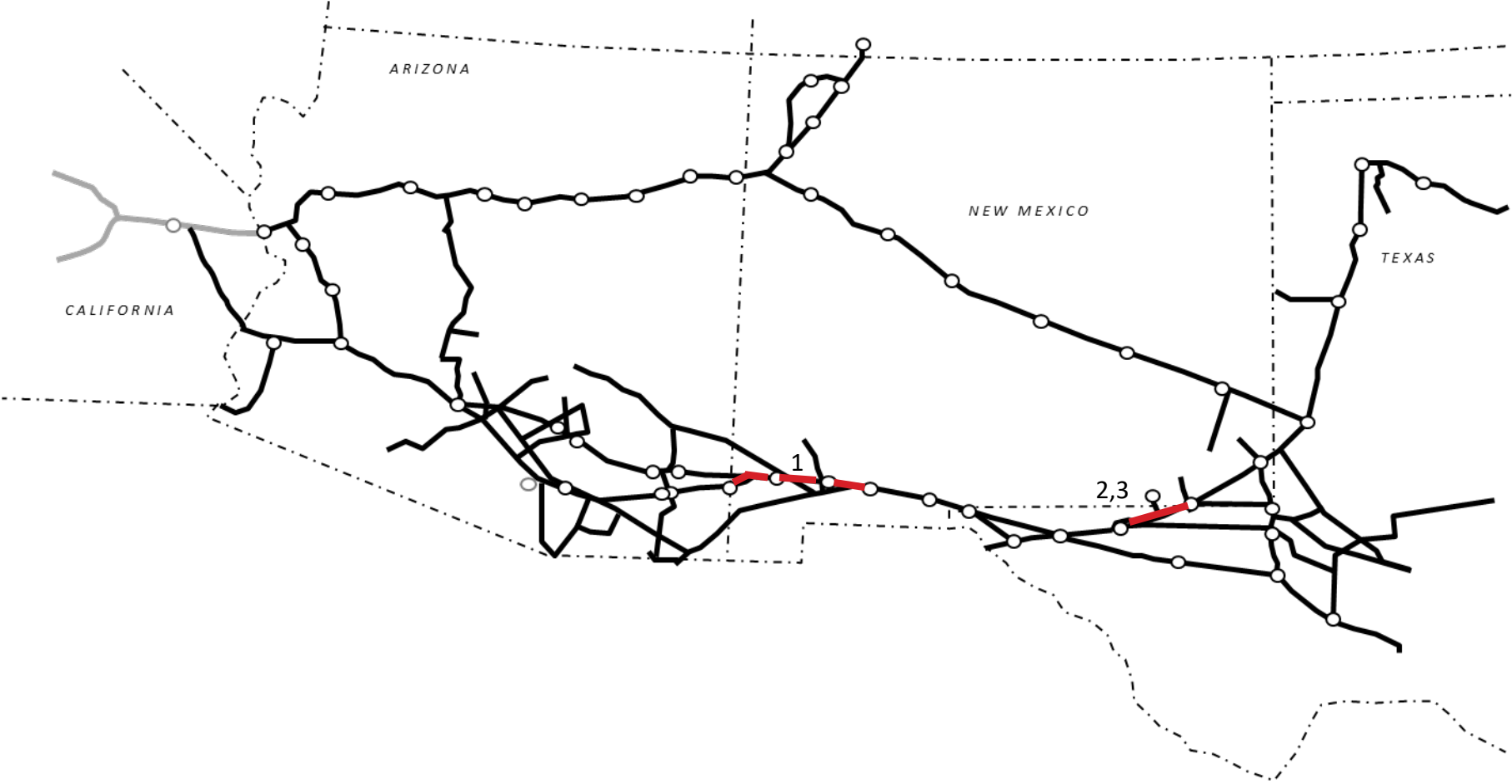
Communication to Customers (continued)

- Monthly Maintenance
 - Monthly schedule posted 9 business days before the following month.
 - Updated as required prior to and during the month.
- EBB
 - EPNG - <https://pipeportal.kindermorgan.com/PortalUI/DefaultKM.aspx?TSP=EPGD>
 - Mojave - <https://pipeportal.kindermorgan.com/PortalUI/DefaultKM.aspx?TSP=MOJD>
 - Sierrita - <https://pipeportal.kindermorgan.com/PortalUI/DefaultKM.aspx?TSP=SGP>

Planned Maintenance Nov 2024/Dec 2024

Remaining 2024 Maintenance

November - December



Item	Description	Sched Start	Sched Finish	Capacity Impact Dth/d
1	Deming Area - Line 1103 Deming to San Simon - Pipeline Integrity Inspections	11/5/24 8:00 AM	11/7/24 8:00 AM	560,000 Dth/d
2	Carlsbad Area - L1103 Pecos River to Guadalupe - Pipeline Replacement	11/1/24 8:00 AM	11/9/24 8:00 AM	273,000 Dth/d
3	Carlsbad Area - L1110 Pecos River to Guadalupe - Pipeline Replacement	12/6/24 8:00 AM	12/21/24 8:00 AM	300,000 Dth/d

Gas Control Contacts

- **Russ Pyeatt - Manager**

- (719) 520-3729 (office)
- (505) 320-4556 (cell)
- russ_pyeatt@kindermorgan.com

- **Dan English - Lead Controller**

- (719) 520-4722 (office)
- (719) 659-3210 (cell)
- dan_english@kindermorgan.com

- **Morgan McCasland - Lead Controller**

- (719) 520-4339 (office)
- (505) 716-6925 (cell)
- morgan_mccasland@kindermorgan.com

- **John Althoff – Lead Controller**

- (719) 667-7750 (office)
- (719) 314-8976 (cell)
- john_althoff@kindermorgan.com

Thank You