



*Delivering Energy to Improve Lives*

---

# El Paso Natural Gas Pipeline 2022 Winter Preparedness

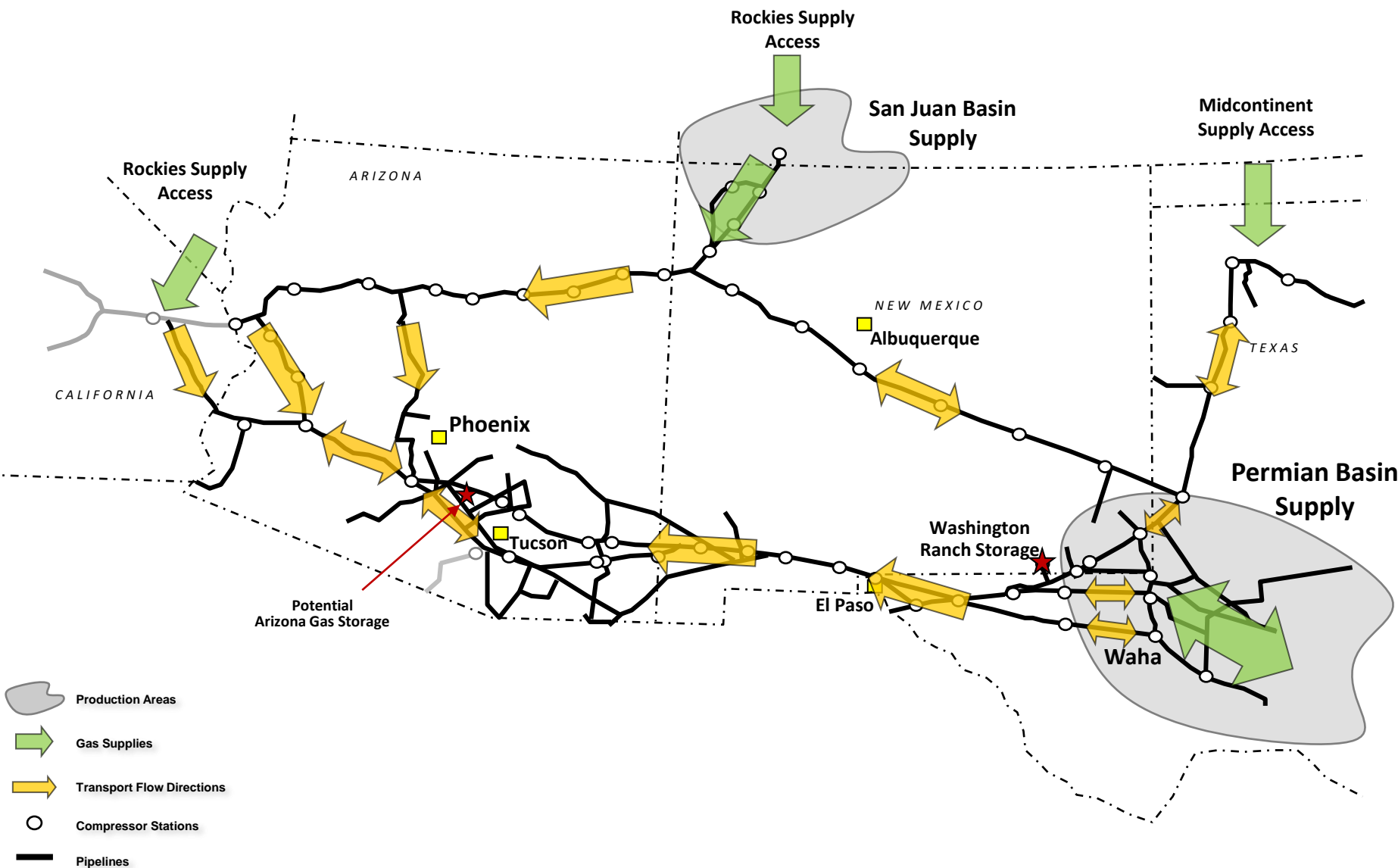
October 26, 2022

- Operations Overview
- Emergency Communication
- Winter Preparedness Planning
- Maintenance Planning Process
- Remaining 2022 Planned Maintenance
- Gas Control Contacts

# Operations Overview

# EPNG System Overview

Supply Locations and Flow Direction



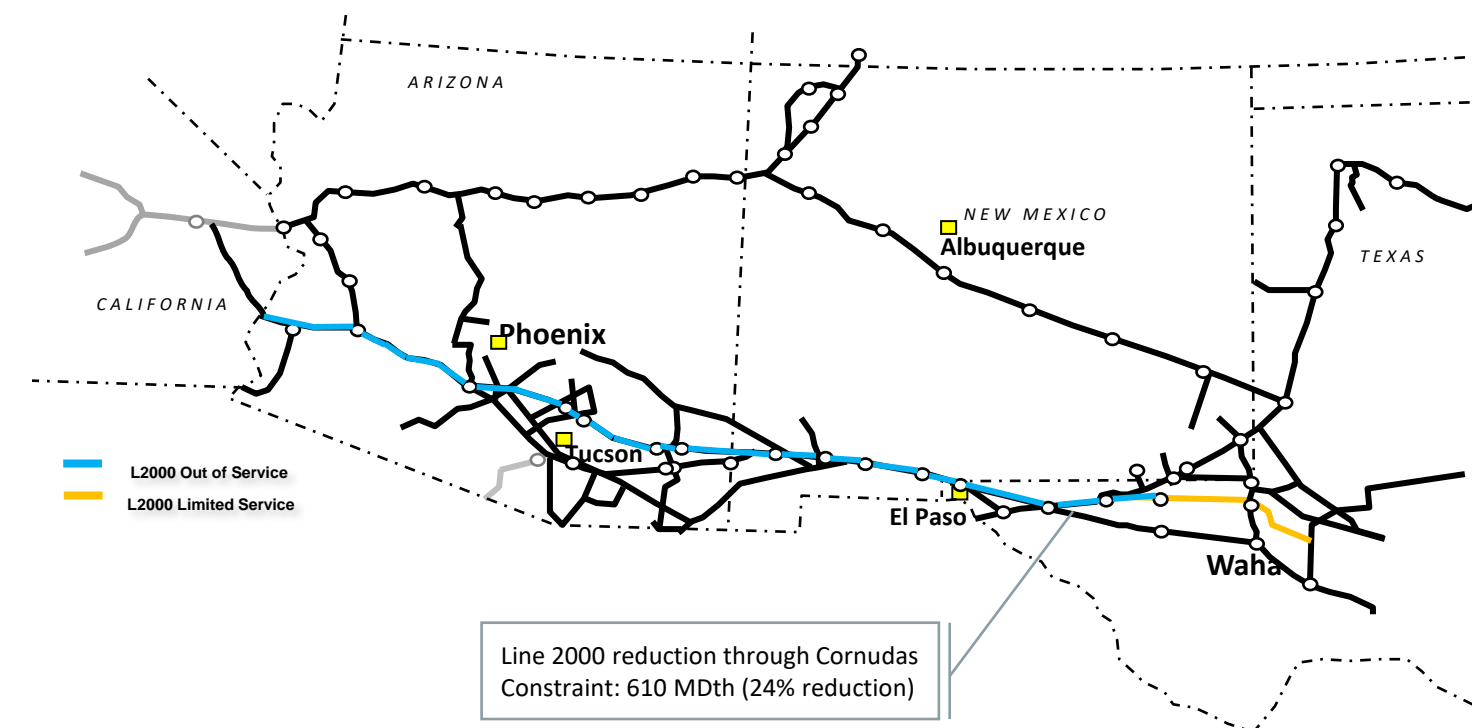
**El Paso Natural Gas (EPNG)** is a pipeline system which transports natural gas from the San Juan, Permian and Anadarko basins to California, Arizona, Nevada, New Mexico, Oklahoma, Texas and Northern Mexico. EPNG also owns approximately 44 billion cubic feet of underground working natural gas storage capacity in Southeast New Mexico.

The **Mojave Pipeline** is a pipeline system that connects with the EPNG system near Topock, Arizona, Cadiz, California, the Transwestern systems in Arizona, and Kern River Gas Transmission Company in California.

The **Sierrita Gas Pipeline (Sierrita)** is a pipeline system that extends from the El Paso Natural Gas pipeline system, near Tucson, Arizona, to the United States-Mexico border near Sasabe, Arizona.

# Line 2000 Force Majeure

## Pipeline Failure Near Coolidge, Arizona



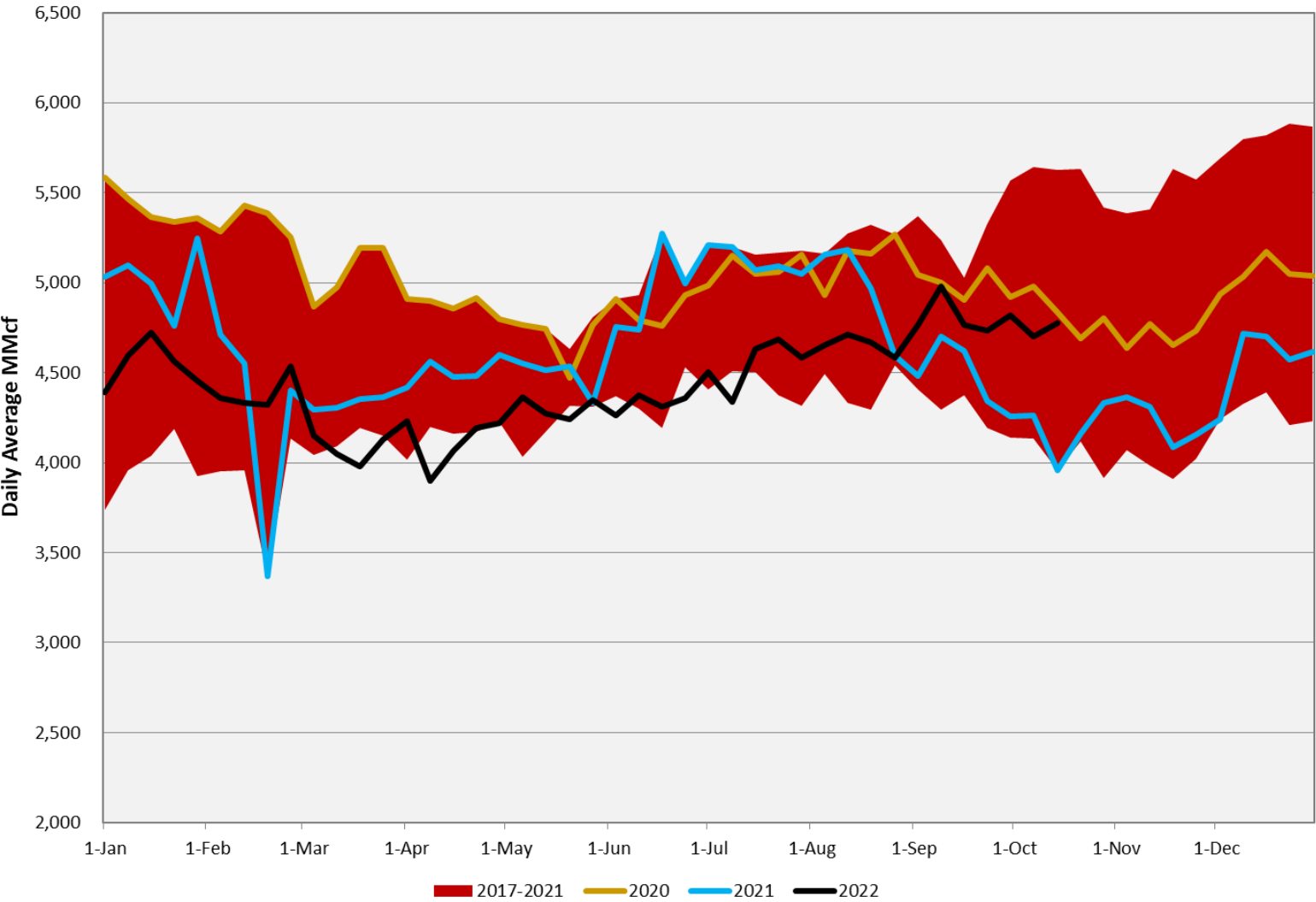
- Line 2000 failure near Coolidge, Arizona
  - EPNG has isolated the impacted portion of its line in the area.
- Force Majeure notice originally posted August 15, 2021
  - Critical Notice No. 612627
  - Periodic updates provided
    - (Latest Update August 10, 2022: Critical Notice No: 615623)
- Currently under investigation by NTSB
- Line 2000 is under a pressure restriction by PHMSA
  - Entire line is under a restriction from Permian Basin to California border.
  - Line is out of service from Black River compressor station to California border.
- Return to service TBD.

# EPNG Total System

2017-2022 Throughput Trends (MMcf/d)

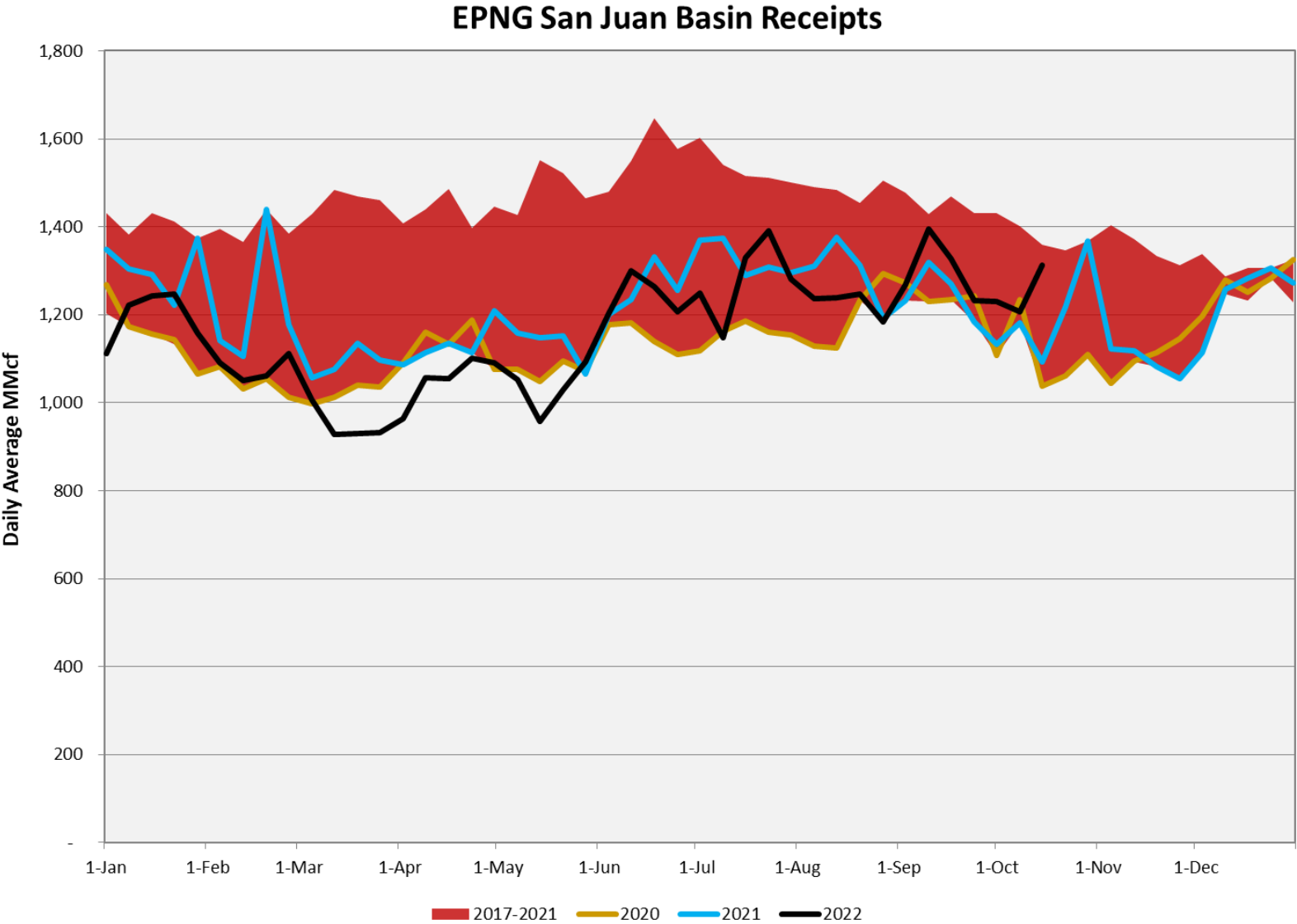


EPNG Total Throughput



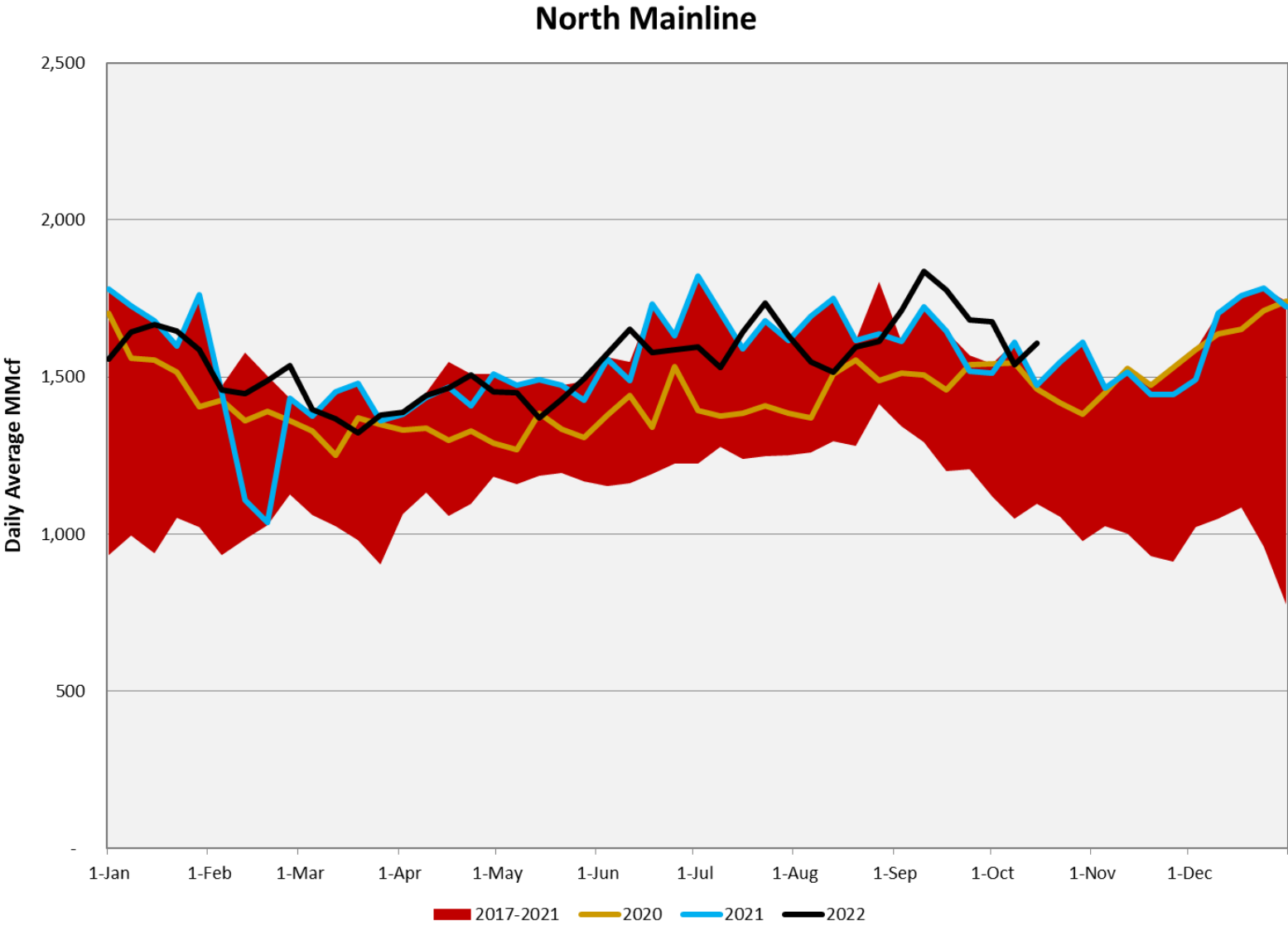
# San Juan Basin

2017-2022 Throughput Trends (MMcf/d)



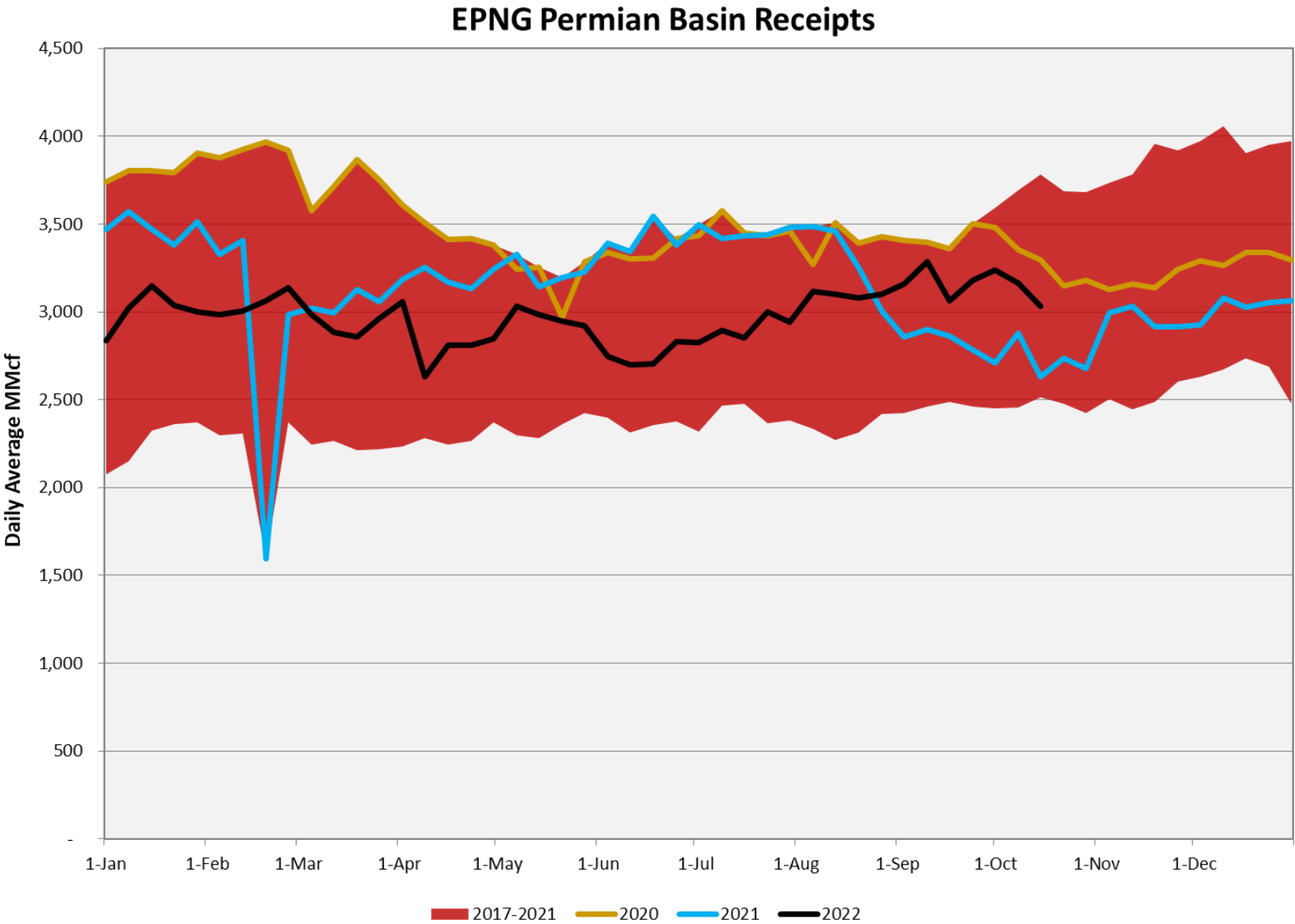
# North Mainline

2017-2022 Throughput Trends (MMcf/d)



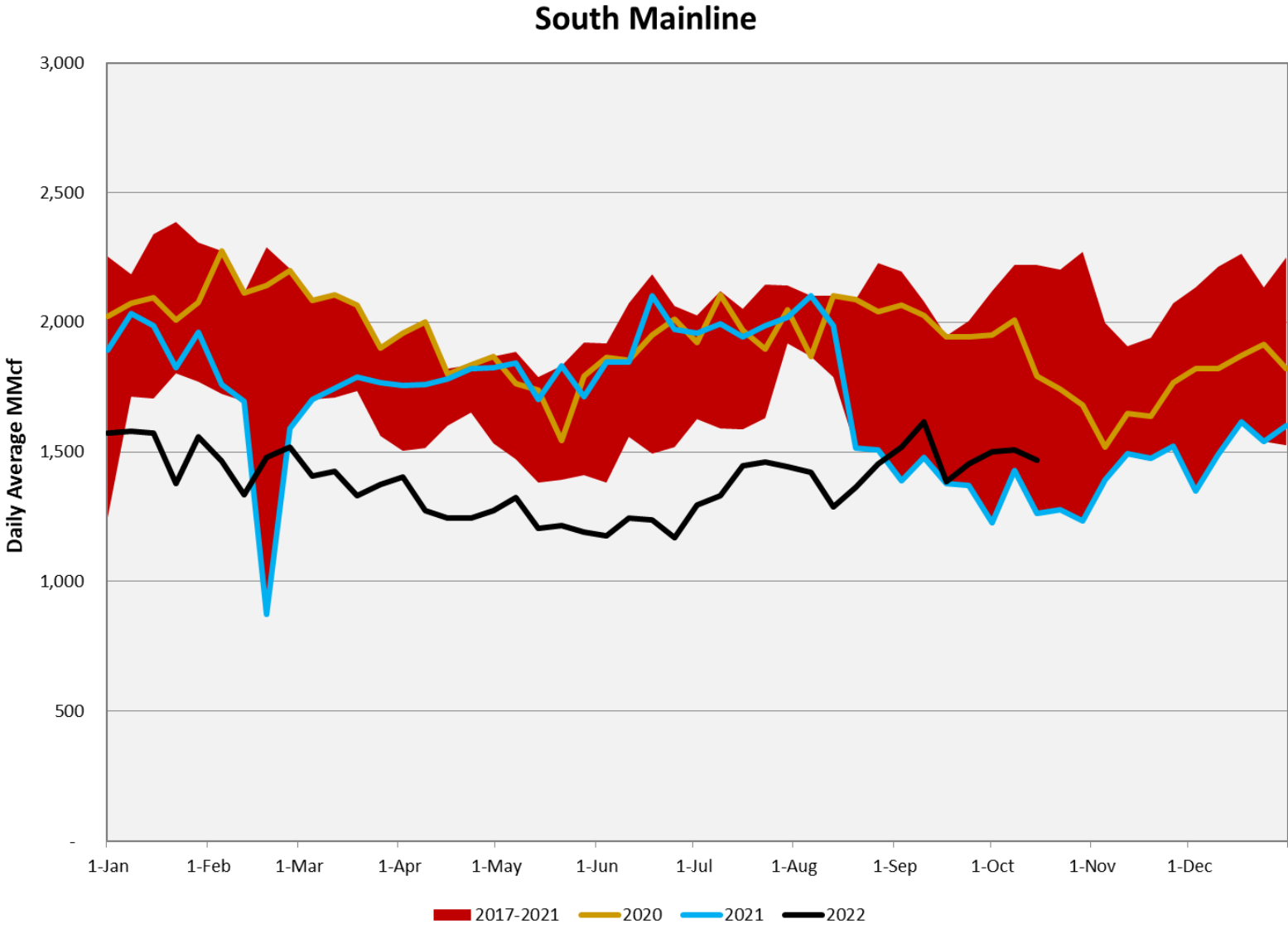
# Permian Basin

2017-2022 Throughput Trends (MMcf/d)



# South Mainline

2017-2022 Throughput Trends (MMcf/d)



# Emergency Communications

- Shipper and Stakeholder Mass Communication
  - EBB Notices
  - Emails to shipper-maintained group email addresses
  - Telephone message sent by EPNG to emergency contacts
  - System Status Hotline (1-855-762-0100) parties can call for a recorded status of the system (updated as needed throughout an event)
- Standard critical notice to promote quicker action
- Banner on internet homepage to alert users to an emergency

# Winter Preparedness

- Staffing
  - Gas Control is 24 x 7 x 365.
  - Field technicians are on-site or on-call.
- Local Facility preparation (Begin about November 1<sup>st</sup>)
  - Vehicle inspections – prepare vehicles for cold weather.
  - Two-Way Radio functional tests
  - Facility inspections with focus on weatherproofing.
    - Heat tracing, heat lamps, thermal blankets, etc.
  - Snow Removal Equipment Inspection (Where applicable)
  - Assessment of back-up power needs (existing stand-by generation and rental generators as deemed necessary).

- **Communication and Coordination**

- Customer-specific winter preparedness meetings or communications.
- Monitor Weather Forecast.
- Conference Calls between Gas Control and Operations to discuss preparations.
- Shipper and Stakeholder Mass Communication via EBB notices.
- Shipper-Specific Communications.

- **Operational Response**

- Multiple flow paths for supply to reach the market.
- Access to supply area storage: Washington Ranch, Keystone Gas Storage and Merchant Ranch Storage.
- EPNG has developed excellent working relationships with both affiliated and non-affiliated interconnecting pipelines which provide additional layers of contingency management in responding to emergency situations.

# Maintenance Planning Process and Communications

## Annual Maintenance Planning Process

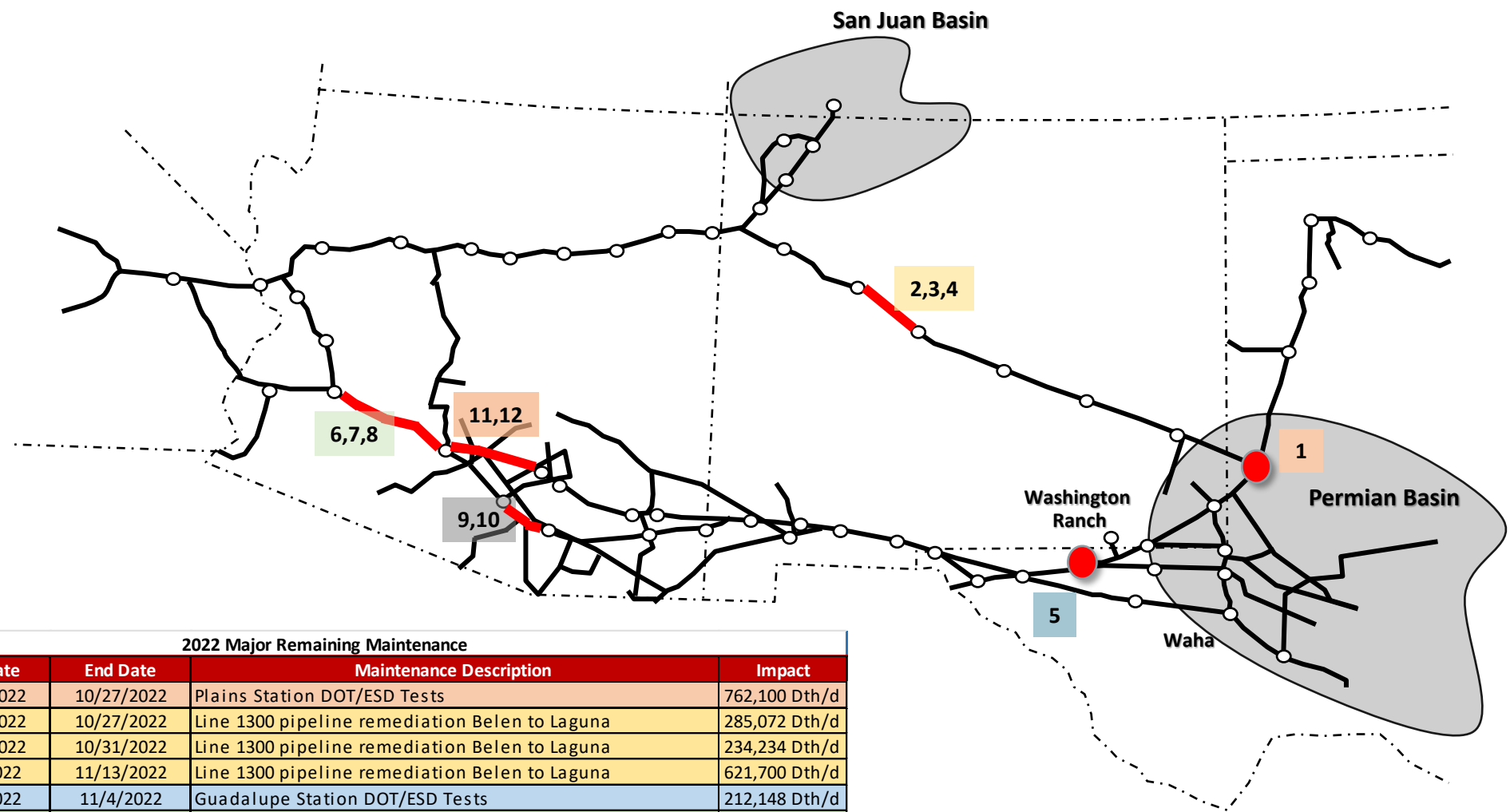
- July/August – Process Begins
  - Review of annually recurring maintenance
  - Development of Pipeline Integrity project list for the next year.
  - Development of additional O&M and project related maintenance outages for the next year.
- October
  - Gas Control preliminary review.
  - Project Planning Meeting with Project Engineering , Pipeline Engineering and Operations to review global schedule.
- November
  - Gas Control Review of Global Schedule .
  - Operations meetings/concalls to resolve scheduling conflicts.
  - Preliminary capacity impact analysis by System Design for larger outages.
  - Approval of Annual Plan.
- Communication to Customers
  - December 15 - Annual Plan for 1<sup>st</sup> Quarter posted to EBB.
  - Mid-March - Annual Plan updated for the remainder of the year posted to the EBB.

## Communication to Customers (continued)

- Monthly Maintenance
  - Monthly schedule posted 9 business days before the following month.
  - Updated as required prior to and during the month.
- EBB
  - EPNG - <https://pipeportal.kindermorgan.com/PortalUI/DefaultKM.aspx?TSP=EPGD>
  - Mojave - <https://pipeportal.kindermorgan.com/PortalUI/DefaultKM.aspx?TSP=MOJD>
  - Sierrita - <https://pipeportal.kindermorgan.com/PortalUI/DefaultKM.aspx?TSP=SGP>

# Planned Maintenance Oct 2022 – Dec 2022

# October – December Maintenance Highlights



2022 Major Remaining Maintenance				
Item	Start Date	End Date	Maintenance Description	Impact
1	10/25/2022	10/27/2022	Plains Station DOT/ESD Tests	762,100 Dth/d
2	10/25/2022	10/27/2022	Line 1300 pipeline remediation Belen to Laguna	285,072 Dth/d
3	10/28/2022	10/31/2022	Line 1300 pipeline remediation Belen to Laguna	234,234 Dth/d
4	11/1/2022	11/13/2022	Line 1300 pipeline remediation Belen to Laguna	621,700 Dth/d
5	11/1/2022	11/4/2022	Guadalupe Station DOT/ESD Tests	212,148 Dth/d
6	11/15/2022	11/15/2022	Line 1103 tool runs Casa Grande to Wenden	400,000 Dth/d
7	11/16/2022	11/16/2022	Line 1103 tool runs Casa Grande to Wenden	400,000 Dth/d
8	11/17/2022	11/17/2022	Line 1103 tool runs Casa Grande to Wenden	400,000 Dth/d
9	11/29/2022	11/29/2022	Line 1103 tool runs Benson to Vail	208,723 Dth/d
10	12/1/2022	12/1/2022	Line 1103 tool runs Benson to Vail	208,723 Dth/d
11	12/6/2022	12/6/2022	Line 1600 tool runs Oracle to Casa Grande	416,600 Dth/d
12	12/8/2022	12/8/2022	Line 1600 tool runs Oracle to Casa Grande	416,600 Dth/d

# Gas Control Contacts

- **Russ Pyeatt - Manager**
  - (719) 520-3729 (office)
  - (505) 320-4556 (cell)
  - russ\_pyeatt@kindermorgan.com
- **Dan English - Lead Controller**
  - (719) 520-4722 (office)
  - (719) 659-3210 (cell)
  - dan\_english@kindermorgan.com
- **Tim Fuller- Lead Controller**
  - (719) 520-4339 (office)
  - (719) 377-7471 (cell)
  - timothy\_fuller@kindermorgan.com
- **John Althoff- Maintenance Planner**
  - (719) 667-7750 (office)
  - (719) 314-8976 (cell)
  - john\_althoff@kindermorgan.com

Thank You