

MARICOPA LATERAL
 EXPANSION PROJECT
**Preferred and
 Alternative Sites**

- Preferred Site
- Alternative: North Site
- Alternative: Hydraulically Optimal Site
- Alternative: Drake Site
- EPNG Pipeline
- EPNG Milepost

Yavapai County, AZ
 USGS 7.5' Quadrangle:
 Chino Valley North, AZ
 Hell Point, AZ
 King Canyon, AZ
 NAD 1983 UTM Zone 12N



Base Map: ESRI ArcGIS Online,
 accessed January 2025
 Updated: 1/23/2025
 Project No. 84536
 Layout: Preferred & Alternative Sites
 Aprx: 84536_Haystach_NR_BIO

1:100,000





MARICOPA LATERAL
EXPANSION PROJECT
Preferred Site

- Compressor Station
- Site Access Road Crossing
- Forest Service Road Re-route
- Overhead HD Power Line Route
- EPNG Pipeline
- EPNG Milepost

National Wetlands Inventory

- Freshwater Pond
- Riverine

Flowlines

- Connector
- Stream/River
- Artificial Path

Yavapai County, AZ
USGS 7.5' Quadrangle:
Chino Valley North, AZ
King Canyon, AZ
T16N R1W Section 4
NAD 1983 UTM Zone 12N
34.7958°N 112.371°W

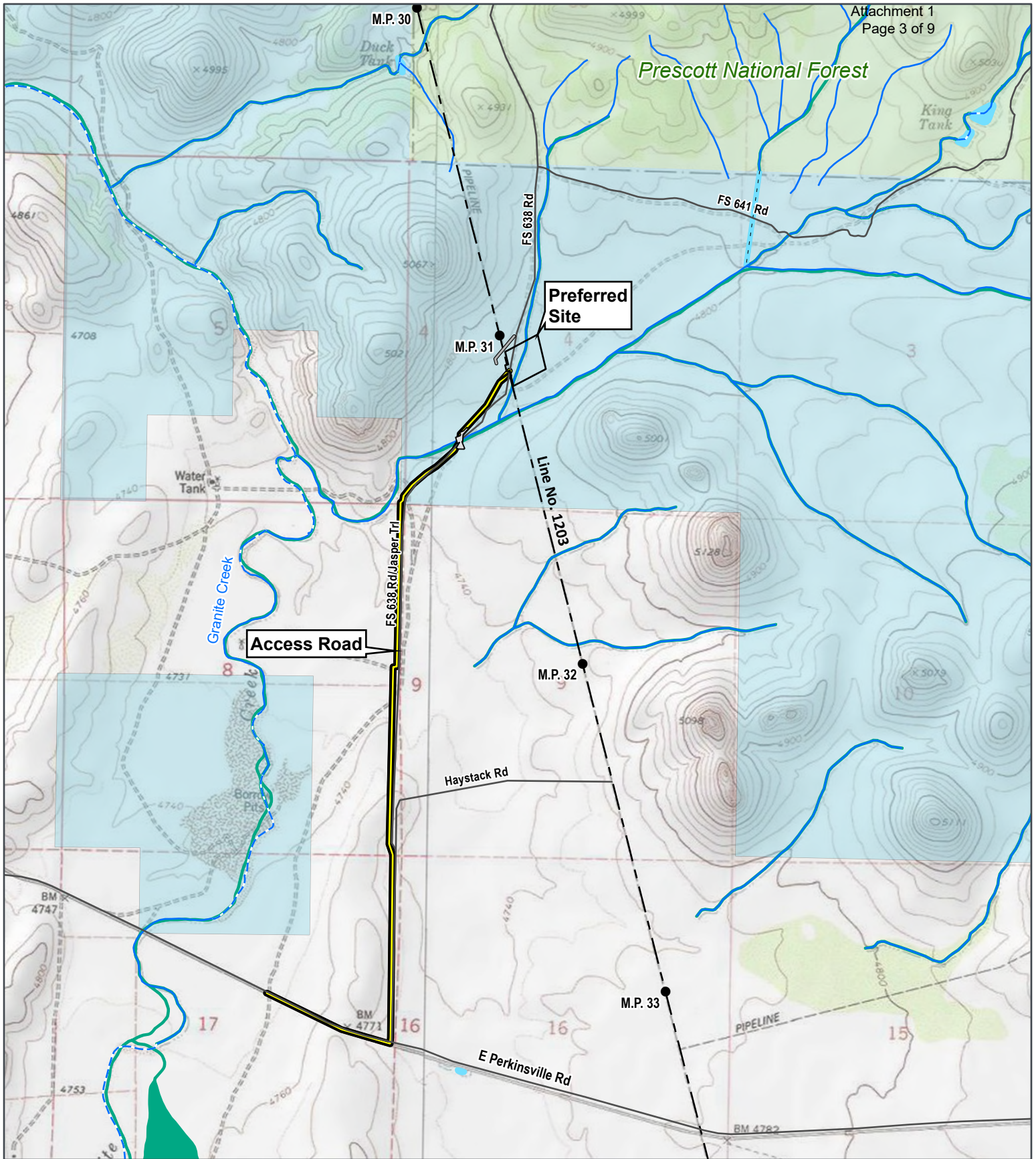
Base Map: ESRI ArcGIS Online,
accessed January 2025
Updated: 1/24/2025
Project No. 84536
Layout: Preferred Sited Aerial
Aprx: 84536_Haystach_NR_BIO



1:24,000



SWCA
ENVIRONMENTAL CONSULTANTS

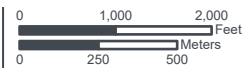


MARICOPA LATERAL EXPANSION PROJECT
Preferred Site

- | | |
|------------------------------|------------------------------------|
| Compressor Station | US Forest Service |
| Site Access Road Crossing | National Wetlands Inventory |
| Forest Service Road Re-route | Freshwater Pond |
| Overhead HD Power Line Route | Riverine |
| EPNG Pipeline | Flowlines |
| EPNG Milepost | Connector |
| Land Ownership | Stream/River |
| Private / Municipal | Artificial Path |
| State Trust | |

Yavapai County, AZ
 USGS 7.5' Quadrangle:
 Chino Valley North, AZ
 King Canyon, AZ
 T16N R1W Section 4
 NAD 1983 UTM Zone 12N
 34.7958°N 112.371°W

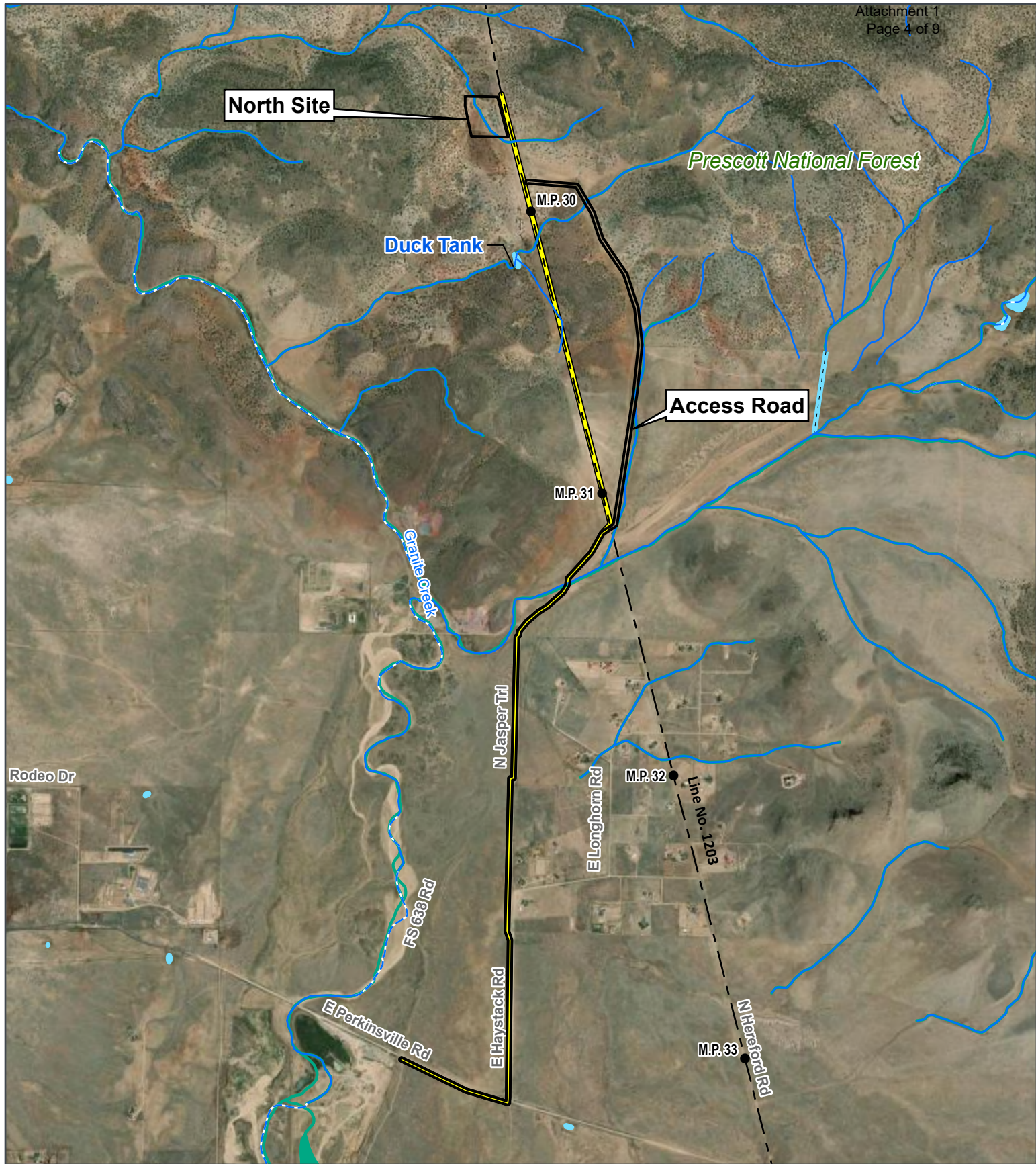
Base Map: ESRI ArcGIS Online,
 accessed January 2025
 Updated: 1/24/2025
 Project No. 84536
 Layout: Preferred Site TOPO
 Aprx: 84536_Haystach_NR_BIO



1:24,000



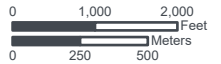
SWCA
 ENVIRONMENTAL CONSULTANTS



MARICOPA LATERAL EXPANSION PROJECT
**Alternative:
 North Site**

- | | |
|------------------------------|-------------------------------------|
| Project Area | Freshwater Pond |
| Overhead HD Power Line Route | Riverine |
| EPNG Pipeline | National Hydrography Dataset |
| EPNG Milepost | Connector |
| | Stream/River |
| | Artificial Path |

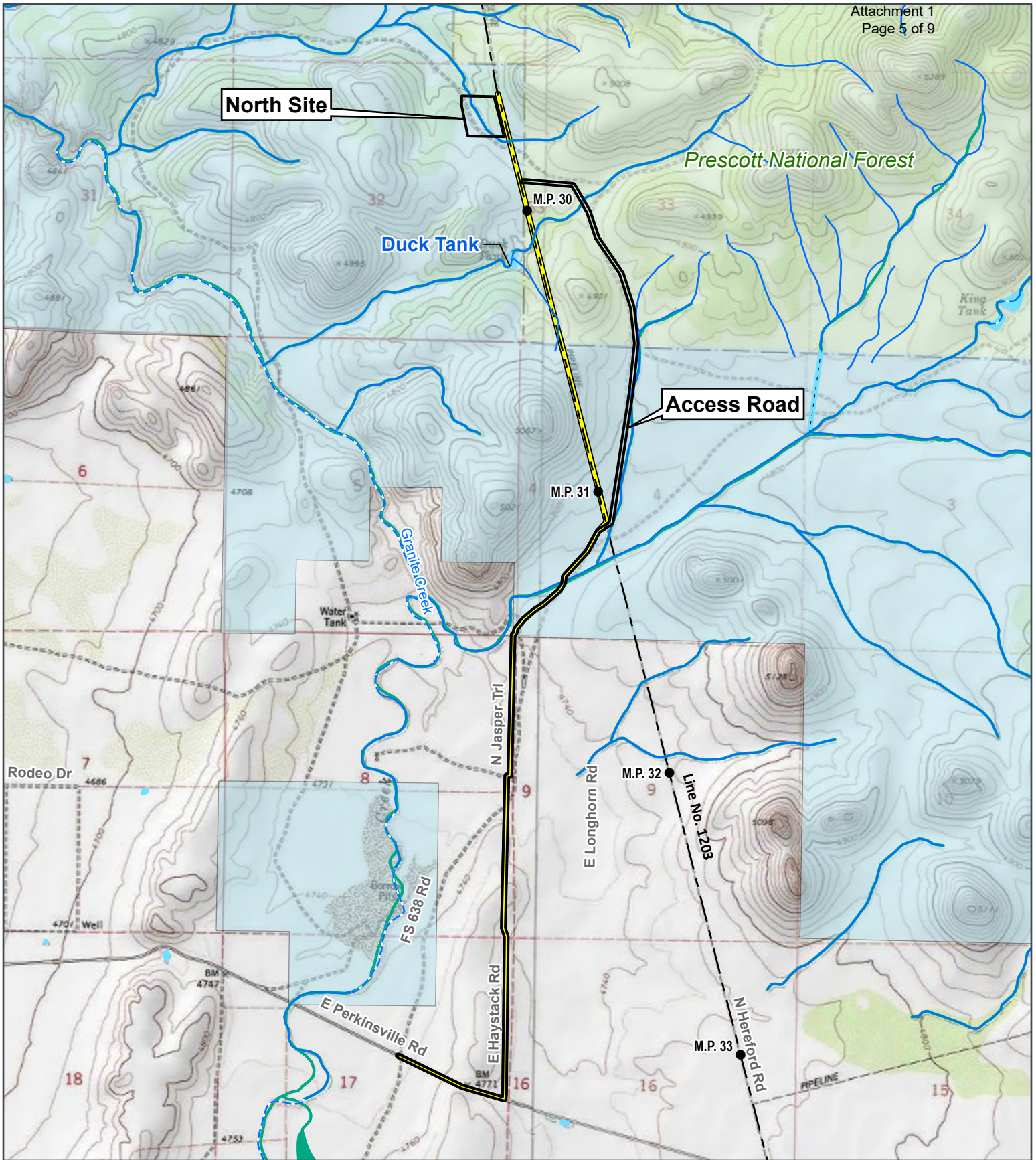
Yavapai County, AZ
 USGS 7.5' Quadrangle:
 Chino Valley North, AZ
 King Canyon, AZ
 T17N R1W Section 32
 NAD 1983 UTM Zone 12N
 34.8139°N 112.3786°W



Base Map: ESRI ArcGIS Online,
 accessed January 2025
 Updated: 1/24/2025
 Project No. 84536
 Layout: North Site Aerial_noLO
 Aprx: 84536_Haystach_NR_BIO

1:28,000





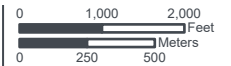
MARICOPA LATERAL EXPANSION PROJECT
**Alternative:
 North Site**

- Project Area
- Overhead HD Power Line Route
- EPNG Pipeline
- EPNG Milepost
- Land Ownership**
- Private
- State Trust
- US Forest Service

- National Wetlands Inventory**
- Freshwater Pond
- Riverine
- National Hydrography Dataset**
- Connector
- Stream/River
- Artificial Path

Yavapai County, AZ
 USGS 7.5' Quadrangle:
 Chino Valley North, AZ
 King Canyon, AZ
 T17N R1W Section 32
 NAD 1983 UTM Zone 12N
 34.8139°N 112.3786°W

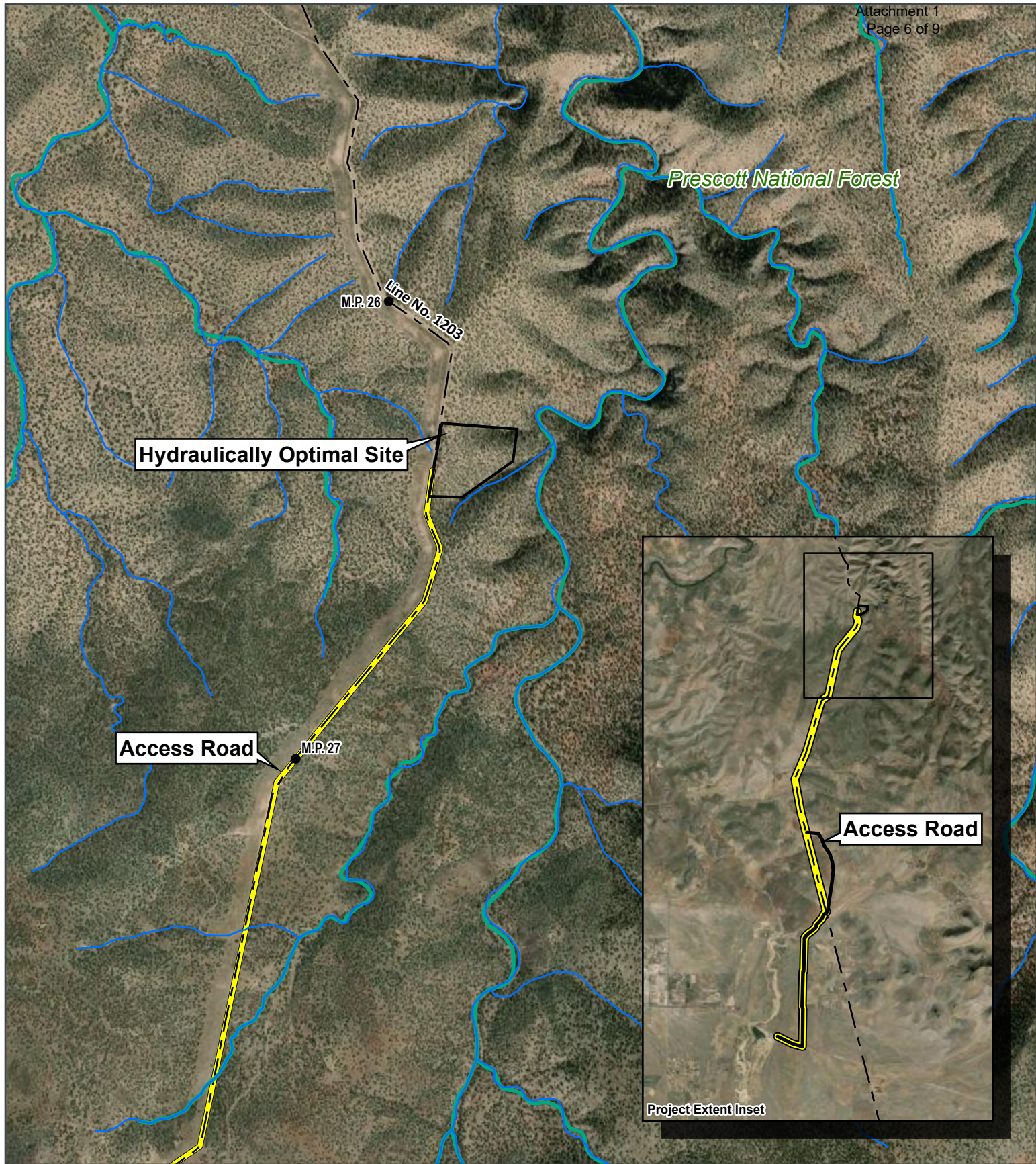
Base Map: ESRI ArcGIS Online,
 accessed January 2025
 Updated: 1/24/2025
 Project No. 84536
 Layout: North Site Alt TOPO
 Aprx: 84536_Haystach_NR_BIO



1:28,000



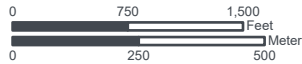
SWCA
 ENVIRONMENTAL CONSULTANTS



MARICOPA LATERAL EXPANSION PROJECT
Alternative: Hydraulically Optimal Site

- Project Area
- Overhead HD Power Line Route
- EPNG Pipeline
- EPNG Milepost
- National Wetlands Inventory Riverine
- National Hydrography Dataset Stream/River

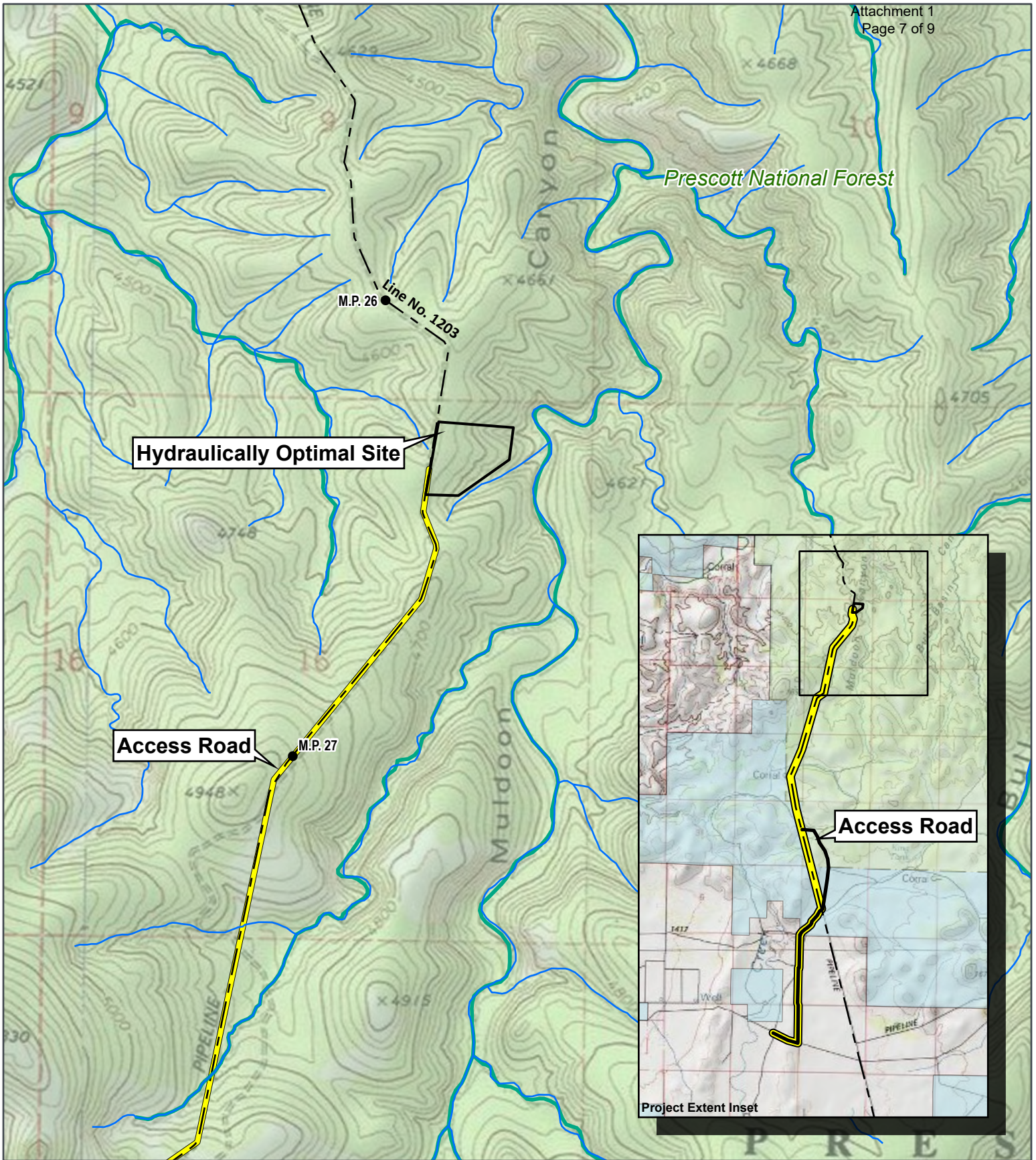
Yavapai County, AZ
 USGS 7.5' Quadrangle:
 King Canyon, AZ, 34112-G3
 T17N R1W Section 16
 NAD 1983 UTM Zone 12N
 34.8601°N 112.3635°W



Base Map: ESRI ArcGIS Online,
 accessed January 2025
 Updated: 1/24/2025
 Project No. 84536
 Layout: HOL Aerial_noLO
 Aprx: 84536_Haystach_NR_BIO

1:15,000

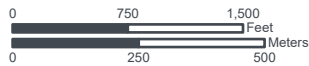




MARICOPA LATERAL EXPANSION PROJECT
**Alternative:
 Hydraulically Optimal Site**

- | | |
|------------------------------|-------------------------------------|
| Project Area | National Wetlands Inventory |
| Overhead HD Power Line Route | Riverine |
| EPNG Pipeline | National Hydrography Dataset |
| EPNG Milepost | Stream/River |
| Land Ownership | |
| US Forest Service | |
| State Trust | |
| Private | |

Yavapai County, AZ
 USGS 7.5' Quadrangle:
 King Canyon, AZ, 34112-G3
 T17N R1W Section 16
 NAD 1983 UTM Zone 12N
 34.8601°N 112.3635°W

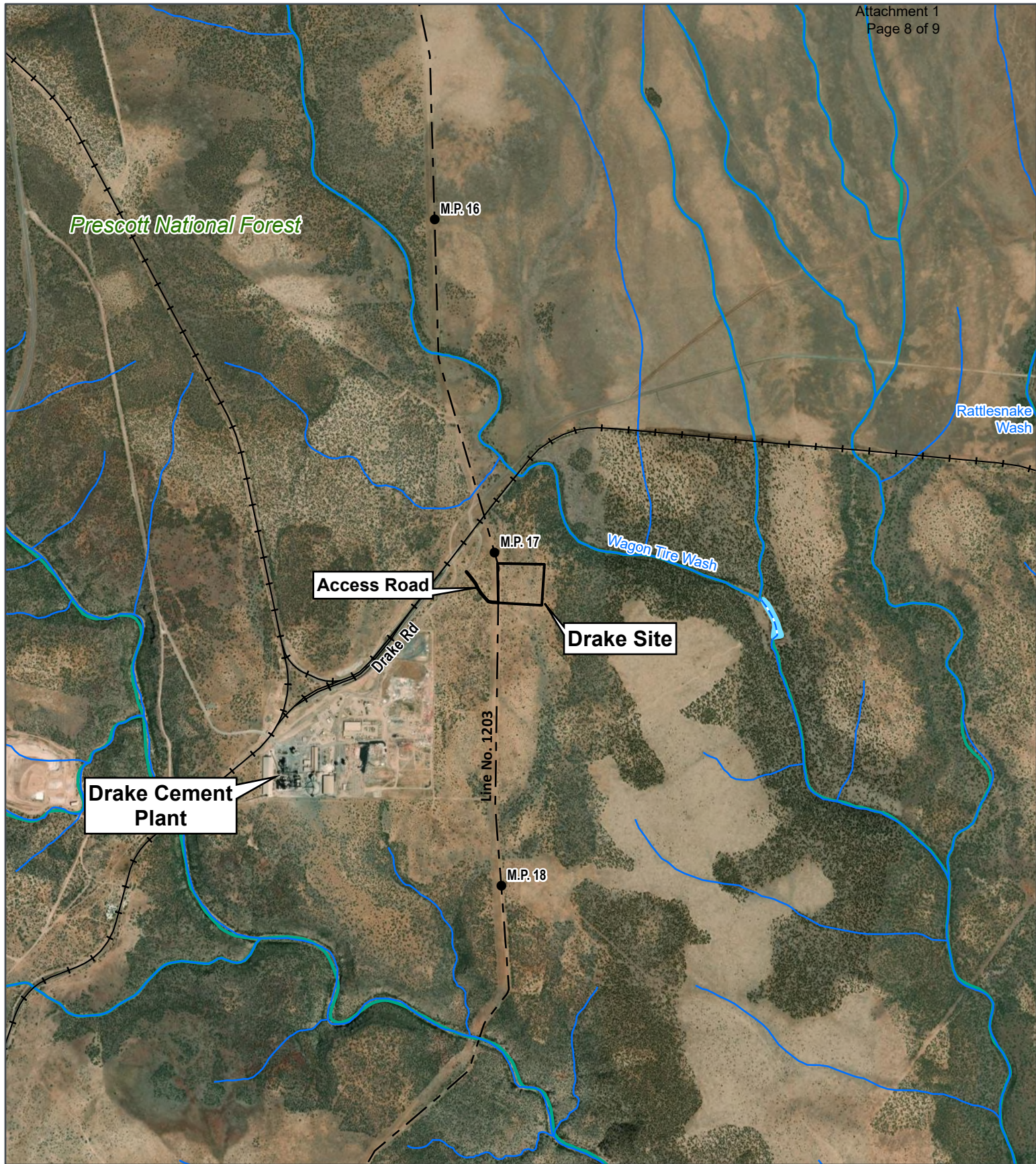


1:15,000



Base Map: ESRI ArcGIS Online,
 accessed January 2025
 Updated: 1/24/2025
 Project No. 84536
 Layout: Hydraulically Optimal TOPO
 Aprx: 84536_Haystach_NR_BIO

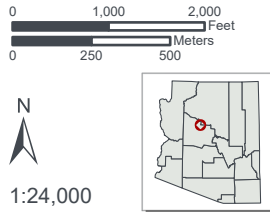




MARICOPA LATERAL
 EXPANSION PROJECT
**Alternative:
 Drake Site**

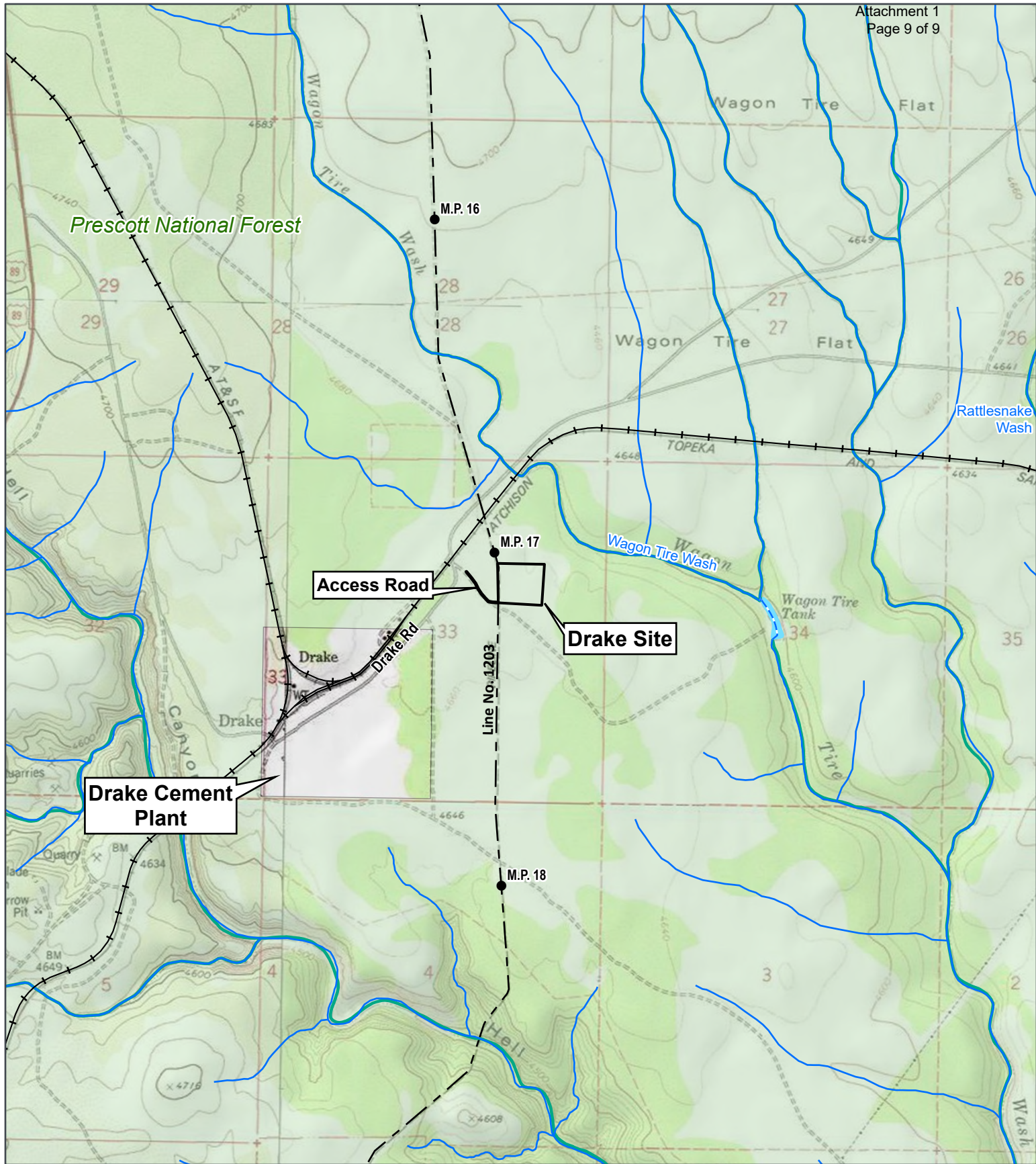
- Project Area
- EPNG Pipeline
- EPNG Milepost
- Railroad
- National Wetlands Inventory**
- Freshwater Pond
- Riverine
- National Hydrography Dataset**
- Stream/River
- Artificial Path

Yavapai County, AZ
 USGS 7.5' Quadrangle:
 Hell Point, AZ, 34112-H3
 T19N R1W Section 33
 NAD 1983 UTM Zone 12N
 34.988°N 112.3635°W



Base Map: ESRI ArcGIS Online,
 accessed January 2025
 Updated: 1/24/2025
 Project No. 84536
 Layout: Drake Compressor Aerial_noLO
 Aprx: 84536_Haystach_NR_BIO

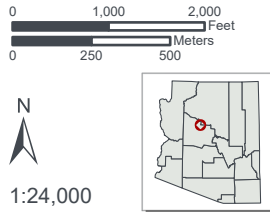
1:24,000
SWCA
 ENVIRONMENTAL CONSULTANTS



MARICOPA LATERAL EXPANSION PROJECT
Alternative: Drake Site

- | | |
|-----------------------|-------------------------------------|
| Project Area | Railroad |
| EPNG Pipeline | National Wetlands Inventory |
| EPNG Milepost | Freshwater Pond |
| Land Ownership | Riverine |
| Private | National Hydrography Dataset |
| US Forest Service | Stream/River |
| | Artificial Path |

Yavapai County, AZ
 USGS 7.5' Quadrangle:
 Hell Point, AZ, 34112-H3
 T19N R1W Section 33
 NAD 1983 UTM Zone 12N
 34.988°N 112.3635°W



Base Map: ESRI ArcGIS Online,
 accessed January 2025
 Updated: 1/24/2025
 Project No. 84536
 Layout: Drake Compressor TOPO
 Aprx: 84536_Haystach_NR_BIO

1:24,000
 SWCA
 ENVIRONMENTAL CONSULTANTS