

NGPL Pipeline Operations Review

Fall 2025

Brian Merchant – Vice President, Gas Control
Ganesh Venkateshan – Director, Gas Control
Kenny Robbins – Manager, Gas Control

Agenda

- Introduction
- NGPL Gas Control Team
- System Overview
- Winter 2024/2025 Lookback
- Summer 2025 Review
- Storage Update
- Winter Readiness

Natural Gas Pipeline Company
of America LLC

NGPL Gas Control Team

NGPL Gas Control Team

- NGPL Gas Control Director
 - Ganesh Venkateshan
- NGPL Gas Control Manager
 - Kenny Robbins
- Lead Controllers
 - Mark Krowski
 - Kyle Lumpkin
- Controllers
 - Juan Flores
 - Alex Rademacher
 - Chuck Ifezue
 - Kyle McDonald
 - Sean Pendleton
 - Colton Rustin
 - Paul Schroeder
 - Joshua Hanson
 - Edward Diggs
 - Ronald Mayfield
- Outage Coordinator
 - Michael Hilsher

System Overview

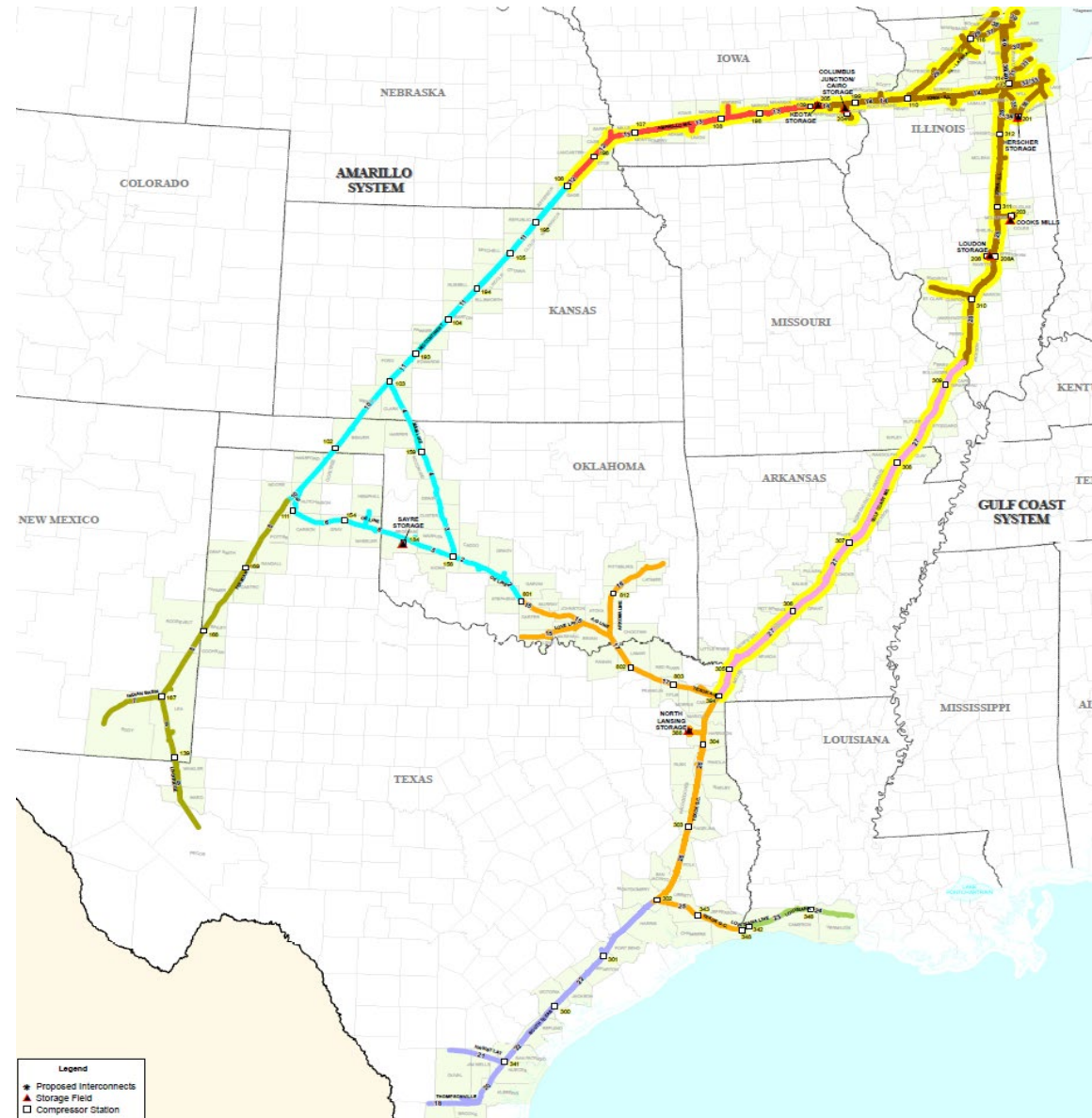
NGPL System Map

- Winter peak day market delivery 5.2 BCF
- Storage working cap 288 BCF
- Mainline line pack 12.3 BCF

Approximate values

- Flow meters 840
- Miles of pipe 9,100
- Total HP 1,053,000
- Total compressor stations 53
- Total storage fields 12

Approximate values



Annual Average Daily Deliveries – System-Wide

	<u>*2025</u>	<u>*2024</u>	<u>*2023</u>	<u>Change</u> <u>'25 vs '24</u>
LDC	2,190	1,918	2,100	14%
Interconnects	1,404	1,034	1,067	36%
LNG	1,116	1,555	1,410	-28%
Power	438	479	410	-9%
Industrial	64	65	65	-2%
TOTAL	5,212	5,051	5052	3%

Volumes are MDth/d

*Jan 1 Through October 15th

Annual Average Daily Deliveries – Market Area

	<u>*2025</u>	<u>*2024</u>	<u>*2023</u>	<u>Change</u> <u>'25 vs '24</u>
LDC	2,160	1,896	2,076	14%
Power	196	348	275	-44%
Interconnects	146	98	77	49%
Industrial	51	51	51	0%
TOTAL	2,553	2,393	2,479	7%

Volumes are MDth/d

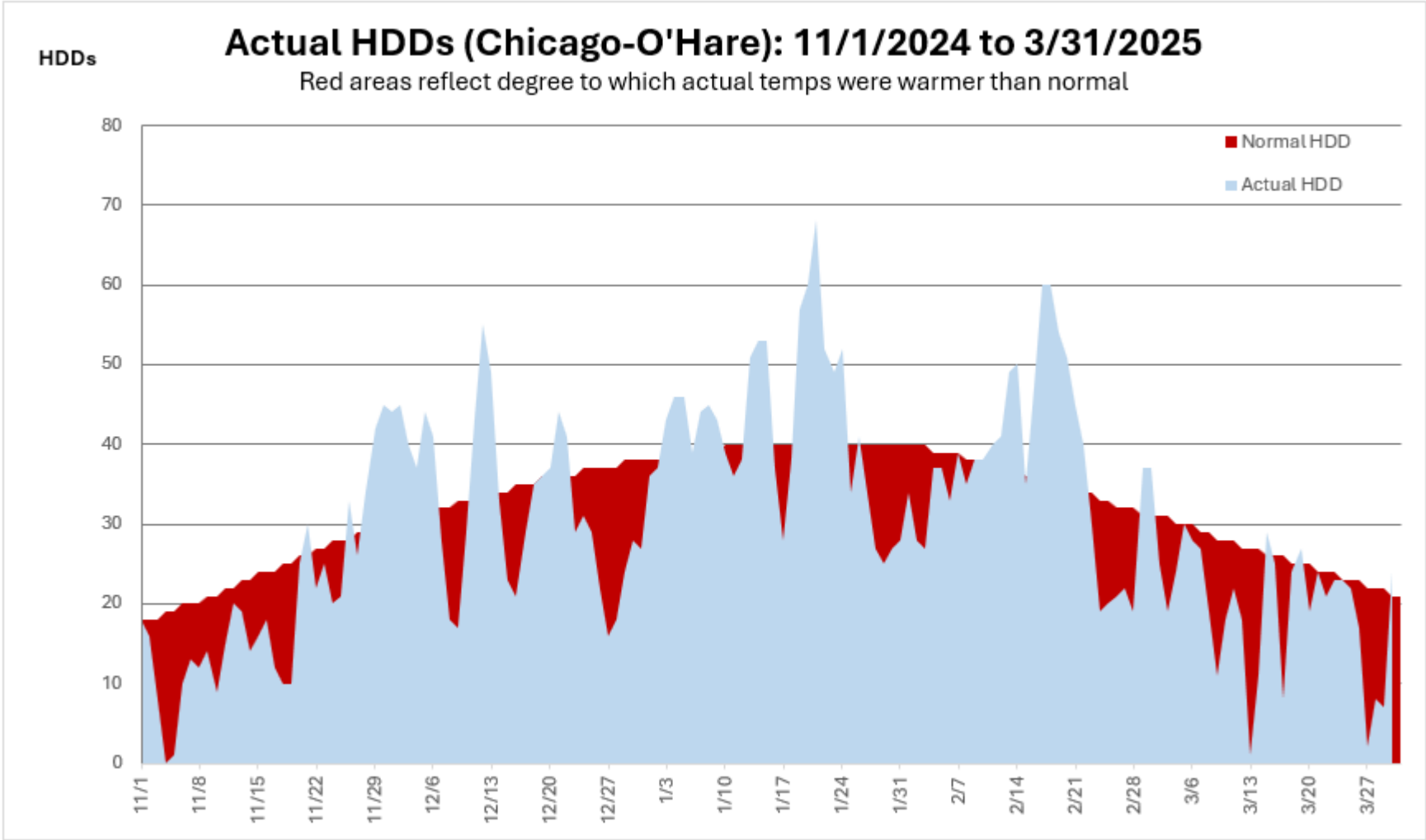
*Jan 1 Through October 15th

Winter 2024/2025 Lookback

Winter 2024-25 Recap

- 2024/2025 winter operations were very steady, weather was seasonal with the brief but intense weather during mid January and mid February with no significant operational issues or scheduling interruptions
- During periods of extended colder than normal weather, the system functioned as designed
 - Winter began with high storage inventory
 - No pressure issues in the Market Delivery Zone
 - Compressor stations staffed 24x7, as needed
- Winter 24/25 total throughput was flat compared to Winter 23/24
 - LDC demand increased by 8% this winter compared to last winter all weather related.
 - NGPL set new single day peak system wide delivery record of 8.962 MMDth on January 20th
 - NGPL also set several daily system wide delivery records this winter (7 out of top 10 and 9 out of top 25)
 - Deliveries to pipeline interconnects remained strong.
- OFOs were issued during the cold weather period in January and February
- Very involved level of communications between gas controls continued and more so during cold weather events.

Winter Weather 2024-25



Chicago HDDs - 2024/2025	Nov	Dec	Jan	Feb	Mar	Total
Actual	558	1013	1306	1049	630	4556
Normal (1991-2020)	713	1069	1228	1016	808	4834
(warmer)/colder	(155)	(56)	78	33	(178)	(278)
% of normal	78%	95%	106%	103%	78%	94.2%

a) Normals are sourced from NOAA

Winter System-Wide Deliveries

	<u>*2024/25</u>	<u>*2023/24</u>	<u>Change</u>
LDC	2,702	2,513	8%
Interconnects	1,276	1,080	18%
LNG	1,215	1,670	-27%
Power	311	366	-15%
Industrial	68	68	0%
TOTAL	5,572	5,697	-2%

Volumes are MDth/d

*November through March

Winter Market Area Deliveries

	<u>*2024/25</u>	<u>*2023/24</u>	<u>Change</u>
LDC	2,643	2,463	7%
Interconnects	176	108	63%
Power	158	292	-46%
Industrial	54	53	2%
TOTAL	3,031	2,916	4%

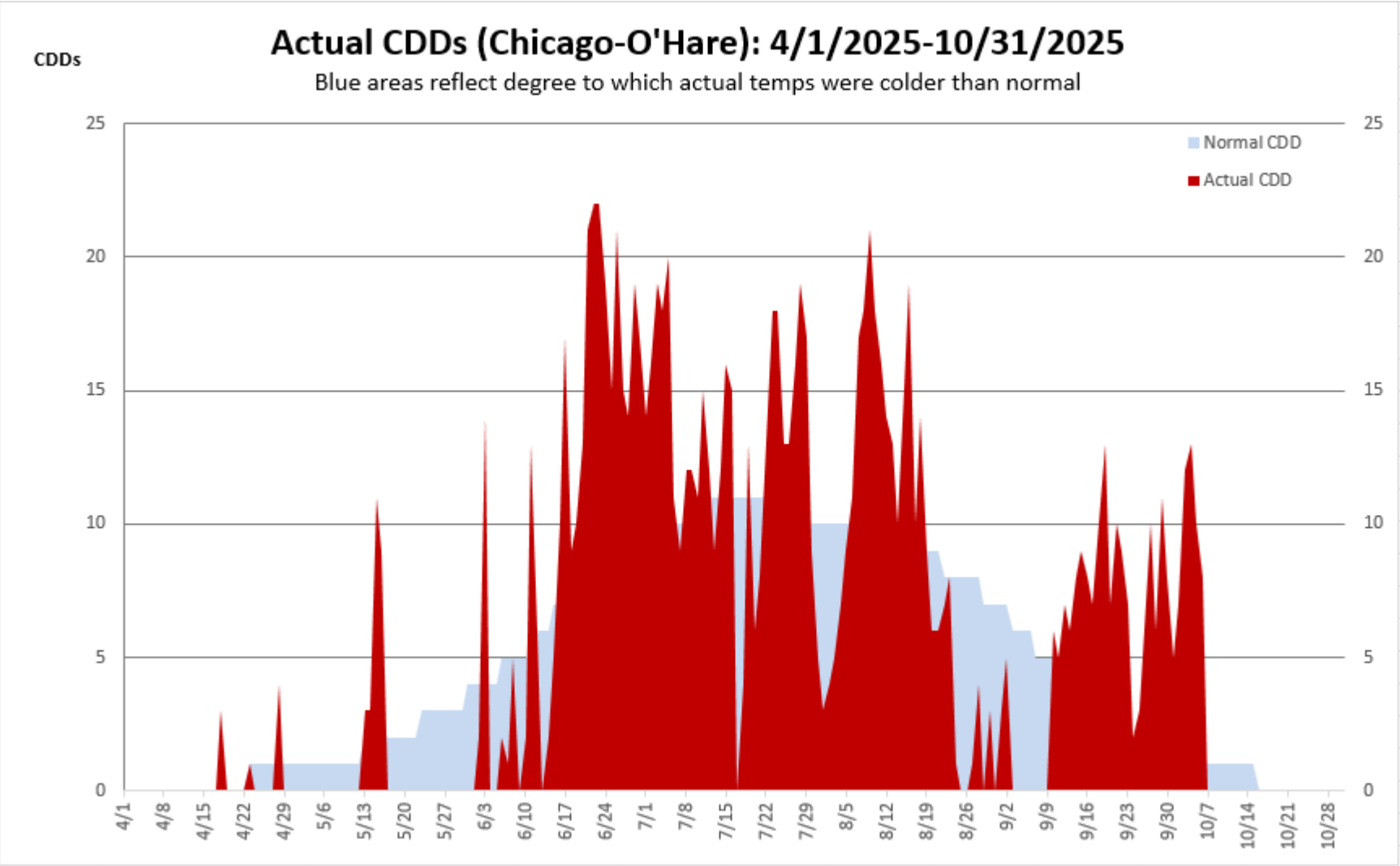
Volumes are MDth/d

*November through March

Summer 2025 Review

- 2025 Summer operations saw continued strong demand system wide
- Focus on storage injections and reservoir maintenance
 - Meet October 31st Storage Inventory Targets
 - Higher market injections to start injection season
- Summer season demand picked up substantially
 - Summer 2025 total throughput continued to stay strong relative to Summer 2024
 - Summer 2025 LDC demand up 15% system wide and in market area compared to 2024
 - NGPL also set several daily delivery records for power generation this summer (2 out of top 10 and 7 out of top 25)
 - Deliveries to Interconnects system-wide up significantly
- Active maintenance season
 - Outages posted on EBB (updated weekly) along with the Outage Impact Report
 - 2025 Maintenance projects should be completed in early November
 - 2025 had increased restrictions due to maintenance

Summer Weather 2025



a) Normals are sourced from NOAA

Proprietary Information

Chicago CDDs - 2025	Apr	May	Jun	Jul	Aug	Sep	Oct	Total
Actual	8	26	296	393	269	166	55	1213
Normal (1991-2020)	8	60	199	326	277	116	15	1001
warmer/(colder)	0	(34)	97	67	(8)	50	40	212
% of normal	100%	43%	149%	121%	97%	143%	367%	121.2%

Summer System-Wide Deliveries

	<u>*2025</u>	<u>*2024</u>	<u>Change</u> <u>'25 vs '24</u>
LDC	1,910	1,668	15%
Interconnects	1,433	1,012	42%
LNG	1,071	1,516	-29%
Power	514	524	-2%
Industrial	61	63	-3%
TOTAL	4,989	4,783	4%

Volumes are MDth/d

*April through October 15th

Summer Market Area Deliveries

	<u>*2025</u>	<u>*2024</u>	<u>Change '25 vs '24</u>
LDC	1,901	1,660	15%
Power	227	367	-38%
Interconnects	117	89	30%
Industrial	49	50	-2%
TOTAL	2,294	2,166	6%

Volumes are MDth/d

*April through October 15th

2025 Outage Summary

<u>Type</u>	<u>2025</u>	<u>2024</u>	<u>2023</u>
Integrity	128	158	150
O&M	<u>376</u>	<u>288</u>	<u>253</u>
System Total	504	446	403
Market Area and Storage	121	109	98
Amarillo projects	184	209	174
GC projects	201	128	131
Posted	112	116	119
Posted with Impact	40	57	45

Managing Outages

- While some outages are immediate and/or unavoidable, where possible NGPL makes every attempt to minimize the duration of outages and consolidate work to limit the number of outages and minimize the impact to shippers.
- Kinder Morgan, as Operator of NGPL, has dedicated mechanical and project teams available, in addition to outside contract support.
- Integrity/Reliability projects completed this year
 - New compression at station 168
 - Wellbore enhancements/perforations/drill outs at Sayre Storage
 - Automation upgrades at stations 310, 308 and 184
 - Backup generation to be placed at Herscher... with longer term project of more complete electrical project continues
 - Integrity related project completions

- The following table shows the typical timeline to receive results after a pig run is completed:

Type of In-Line Inspection Tool	# of weeks to determine a successful run	# of weeks to Preliminary Report	# of weeks to Final Aligned Report
MFL	1 - 2	3 - 4	8 - 13
AFD	2 - 3	3 - 4	12 - 16
EMAT	2 - 3	N/A	17 - 30

Outage Impact Report

Planned Service Outage
Sep 14 Seg 15 - Cs 801 - Pipeline Maintenance
Sep 14 Seg 33- Cs 113 - Install Launch/Rec-Upd4
Page: [1] 2 3

Capacity Constraints/FMJ
Sep 13 Force Majeure- Seg 8- Pipe Remed -Lifted
Sep 12 Force Majeure- Seg 8- Pipe Remed - Upd 2
Page: [1] 2 3

Other Critical
Sep 13 Current Pipeline Conditions
Sep 12 Current Pipeline Conditions
Page: [1] 2 3

Non-Critical Notices
Sep 13 Os2309-2 Iail To La And Stx To Stx
Sep 08 Os2309-1 Texok To Stx
Page: [1] 2 3

Open Seasons (See Info Postings for all notices)
Sep 08 Rofrn0923-1
Open Season Documents

Service Programs

Hub America

LPS/SRO Program

FastFirm

Other Postings

All Notices

Critical Notices

Non-Critical Notices

Operating Information

Outage Impact Report

Maintenance Outages (Excel)

Current Gas Day

Tomorrow's Gas Day

LEGEND
Location
Constraint
≤2% Available
No Data

Evening - Sep 14 - Final

DISCLAIMER: The summary information contained in this graphical display is a sampling of points for informational purposes only. This display should not be relied on by shippers in making or confirming commercial transactions. For a listing of available capacity, please go to the capacity link under Informational Postings.

Weather Forecast data from weather.gov
Chicago
Omaha
...

On Call Assistance

Scheduling Hotline (713) 369-9683

Gas Control Hotline (800) 733-2490

Proprietary Information

22

Outage Impact Report

NGPL - Outage Impact Report Seven Day Forecast (updated 10/16/25)								-Significant restrictions to subscribed capacity may be necessary.
								-Major restrictions to subscribed capacity may be necessary.
								-Minor restrictions to subscribed capacity may be necessary.
								-No anticipated impact to subscribed capacity.
Station / Seg	Monday (10/20)	Tuesday (10/21)	Wednesday (10/22)	Thursday (10/23)	Friday (10/24)	Saturday (10/25)	Sunday (10/26)	Primary Outage(s) that may impact Throughput
	Est. Minimum Percentage of Available Contracted MDQ							
Station 167 (segment 8 FH)	100%	100%	100%	100%	100%	100%	100%	
Station 167 (segment 9 FH)	100%	100%	100%	100%	100%	100%	100%	
Station 104 (segment 11 FH)	100%	100%	100%	100%	100%	100%	100%	
Station 107 Mills (segment 13 FH)	100%	100%	100%	100%	100%	100%	100%	
Station 801 (segment 15 FH)	100%	100%	100%	100%	100%	100%	100%	
West of Sta 394 (segment 17 BH)	100%	100%	100%	100%	100%	100%	100%	
South of Sta 341 (segment 20 FH)	100%	100%	100%	100%	100%	100%	100%	
South of Sta 302 (segment 22 FH)	100%	100%	100%	100%	100%	100%	100%	
North of Sta 302 (segment 26 BH)	100%	100%	100%	100%	100%	100%	100%	
North of Sta 394 (segment 27 FH)	100%	100%	100%	100%	100%	100%	100%	
This document is updated on a weekly basis and outage schedules/impacts are subject to change as the week progresses. Dates posted on DART should be deemed correct in the event of conflicts between DART posted dates and dates on this report. The impacts sheet are based on steady-state hydraulic models assuming recent operating flows, conditions, and various unit outages.								

Outage Impact Report

NGPL - Outage Impact Report October 2025 (updated 10/16/25)						-Significant restrictions to subscribed capacity may be necessary.
						-Major restrictions to subscribed capacity may be necessary.
						-Minor restrictions to subscribed capacity may be necessary.
						-No anticipated impact to subscribed capacity.
Station / Seg	Week 1 (9/29 - 10/5)	Week 2 (10/6 - 10/12)	Week 3 (10/13 - 10/19)	Week 4 (10/20 - 10/26)	Week 5 (10/27 - 11/2)	Primary Outage(s) that may impact Throughput
	Est. Minimum Percentage of Available Contracted MDQ					
Station 167 (segment 8 FH)					100%	
Station 167 (segment 9 FH)					100%	
Station 104 (segment 11 FH)					100%	
Station 107 Mills (segment 13 FH)					100%	
Station 801 (segment 15 FH)					100%	
West of Sta 394 (segment 17 BH)					100%	
South of Sta 341 (segment 20 FH)					100%	
South of Sta 302 (segment 22 FH)					100%	
East of Sta 302 (segment 25 FH)					71%	X25-366541: 302: Pipeline Maintenance (11/1/2025 - 11/3/2025)
North of Sta 302 (segment 26 BH)					100%	
North of Sta 394 (segment 27 FH)					100%	
This document is updated on a weekly basis and outage schedules/impacts are subject to change as the week progresses. Dates posted on DART should be deemed correct in the event of conflicts between DART posted dates and dates on this report. The impacts sheet are based on steady-state hydraulic models assuming recent operating flows, conditions, and various unit outages.						

Outage Impact Report

NGPL - Outage Impact Report November 2025 (updated 10/16/25)					-Significant restrictions to subscribed capacity may be necessary.
					-Major restrictions to subscribed capacity may be necessary.
					-Minor restrictions to subscribed capacity may be necessary.
					-No anticipated impact to subscribed capacity.
Station / Seg	Week 1 (11/3 - 11/9)	Week 2 (11/10 - 11/16)	Week 3 (11/17 - 11/23)	Week 4 (11/24 - 11/30)	Primary Outage(s) that may Impact Throughput
Est. Minimum Percentage of Available Contracted MDQ					
Station 167 (segment 8 FH)	100%	100%	100%	100%	
Station 167 (segment 9 FH)	100%	100%	100%	100%	
Station 104 (segment 11 FH)	100%	100%	100%	100%	
Station 107 Mills (segment 13 FH)	100%	100%	100%	100%	
Station 801 (segment 15 FH)	100%	100%	100%	100%	
West of Sta 394 (segment 17 BH)	100%	100%	100%	100%	
South of Sta 341 (segment 20 FH)	100%	100%	100%	100%	
South of Sta 302 (segment 22 FH)	100%	100%	100%	100%	
East of Sta 302 (segment 25 FH)	71%	71%	71%	85%	X25-366541: 302: Pipeline Maintenance (11/1/2025 - 11/3/2025) 71% X25-854067: 302: Pipeline Maintenance (11/4/2025 - 11/14/2025) 85% X25-854068: 302: Pipeline Maintenance (11/15/2025 - 11/17/2025) 71% X25-854069: 302: Pipeline Maintenance (11/18/2025 - 11/28/2025) 85%
North of Sta 302 (segment 26 BH)	100%	100%	100%	100%	
North of Sta 394 (segment 27 FH)	100%	100%	100%	100%	
This document is updated on a weekly basis and outage schedules/impacts are subject to change as the week progresses. Dates posted on DART should be deemed correct in the event of conflicts between DART posted dates and dates on this report. The impacts sheet are based on steady-state hydraulic models assuming recent operating flows, conditions, and various unit outages.					

Storage Update

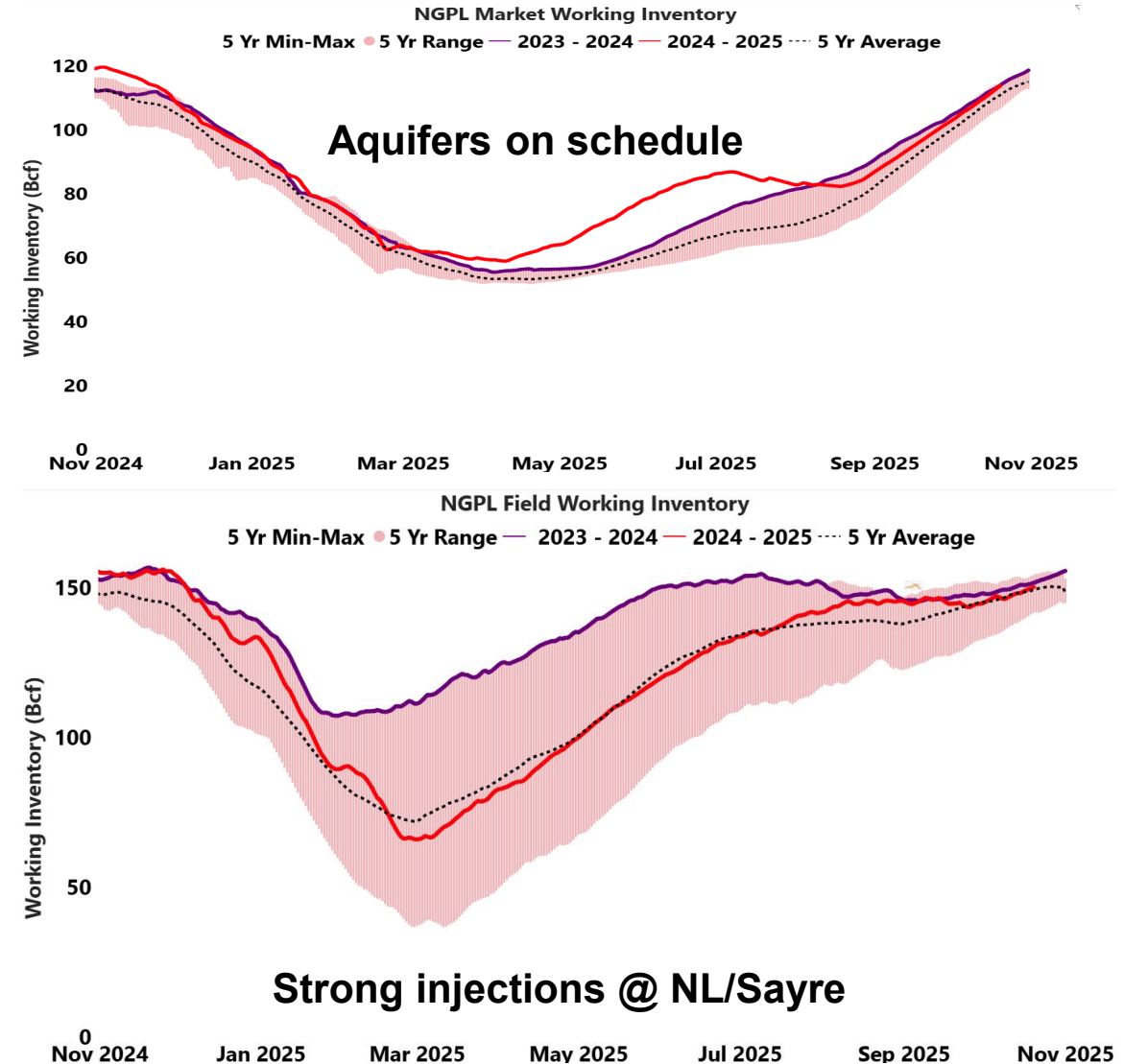
NGPL Gas Storage Inventory Update

2025 Update

- Strong market and field reservoir performance throughout season
- High peak deliverability capability available throughout season
- Firm storage services are fully subscribed and highly utilized
- Higher market injections to start injection season offset by net withdrawals in July/August to meet power demand
- All storage field maintenance projects on target to be completed prior to withdrawal season

2025/26 Winter Outlook

- Market fields on pace to achieve target inventory levels
- Market Injections expected to continue into some reservoirs into November
- Field Inventory on pace to be near full on October 31st, dependent on customer utilization



Winter Readiness

- Market Area storage inventory projected at target inventory level
- Market Area maintenance projects to be completed by early November
 - No expected impact from remaining work
- Expected pipeline operations:
 - Market Area receipts remain consistent with previous winter periods
 - Traditional supply basins:
 - Texok to Market capacity is fully subscribed, but operational capacity may be available
 - Midcontinent to Market capacity is fully subscribed
- Expect scheduling restrictions to be implemented to protect storage fields, delivery pressures and line pack, as necessary
 - Possible limitations may include, but are not limited to:
 - Scheduling for unexpected outages
 - Hourly Rights restrictions
 - Point level or area OFOs
 - Withdrawals limited to WQ rights

- Compression
 - Test run all compressor units prior to increased demand due to colder weather
- Storage
 - All storage fields are ready for winter
 - Field Storage expected to be near full
- Pipeline
 - Maintain line pack targets by area
 - Maintain throughput targets
 - Maintain pressures for key areas
 - Field Ops to man key sites
- Scheduled Maintenance
 - Limit planned maintenance activities to those required by regulation or policy
- Customer Communication
 - Weekly Gas Control-to-Gas Control Conference Calls
 - NGPL posts system capacity and outage information
 - NGPL Scheduling Representatives and Account Directors are available for questions

Natural Gas Pipeline Company
of America LLC

Thank You