

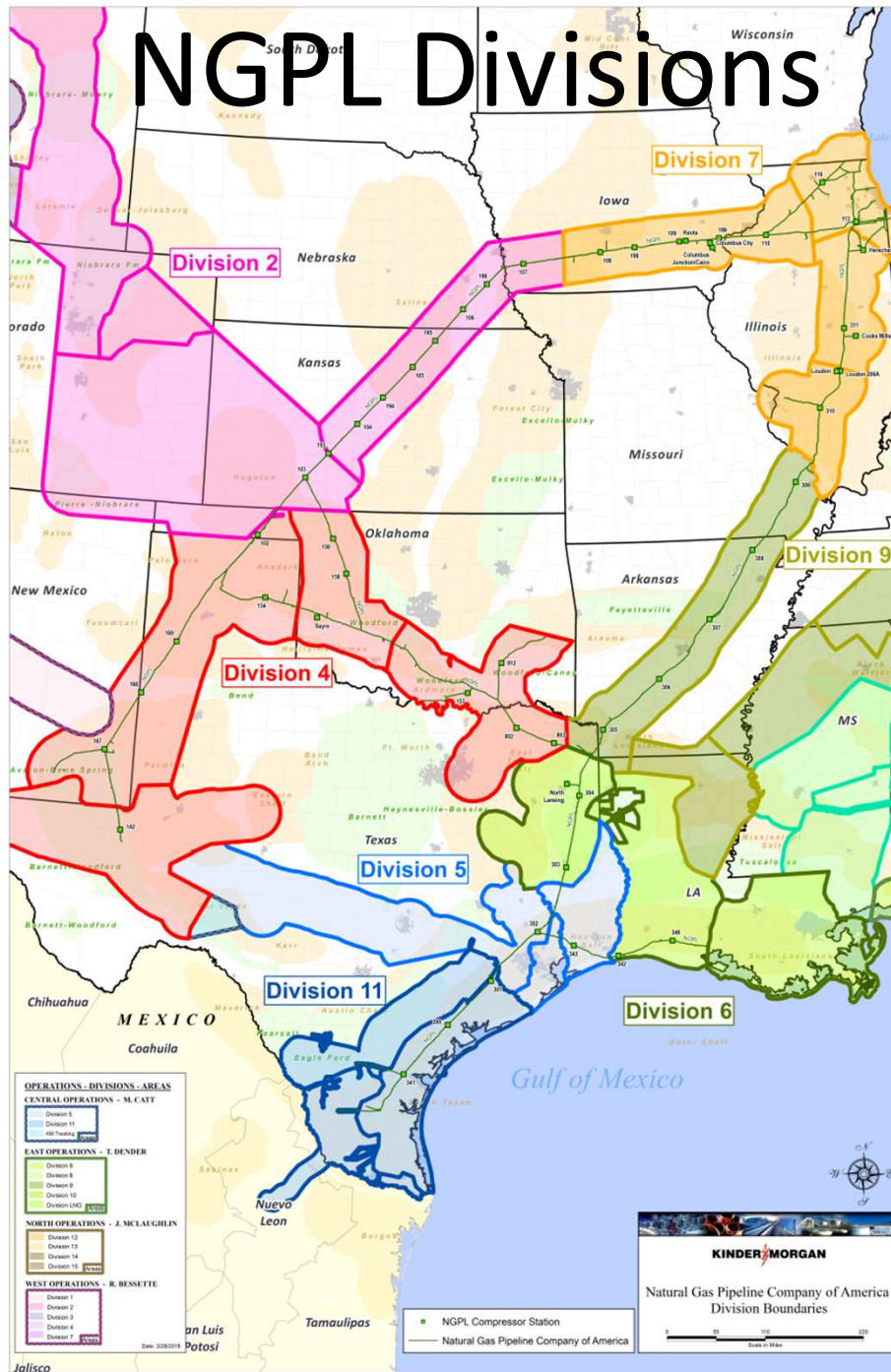
# Natural Gas Pipeline Company of America LLC (NGPL)

Shipper Meeting  
June 26, 2024

# Spending Commitments

- In the 5-year period from 2023 through 2027 NGPL has committed to spend:
  - \$50,000,000 on reliability, resiliency, and green initiatives
  - \$450,000,000 on pipeline integrity related work
- This meeting fulfills NGPL's obligation under the Settlement for 2024 to report on spending annually
- The information included herein regarding NGPL's planned integrity and reliability/resiliency/green expenditures for 2024 is based on planned projects and estimated costs therefor, and thus is subject to change

# NGPL Divisions



# Reliability, Resiliency, and Green Initiative Spending

# Reliability, Resiliency, and Green Initiative Spending

- Indicative projects included in NGPL's 5-year spending commitments\*

Category	System/Station	Project Name	Spend Schedule (\$'s MM)					Total
			2023A	2024F	2025P	2026P	2027P	
<b>A.) Reliability / Resiliency</b>								
Storage	Herscher	HGV water withdrawal well recompletions (phase 1)	\$ 3.4	\$ 0.8	\$ -	\$ -	\$ -	\$ 4.3
Storage	Herscher	HGV water withdrawal well recompletions (phase 2)	-	-	-	-	3.2	3.2
Storage	Herscher	HGV NE new withdrawal well	-	-	-	1.6	-	1.6
Storage	Sayre	Wellbore enhancements/perforations/drill outs	-	0.3	0.5	0.5	0.5	1.8
Storage	Columbus Junction	MS coalescer surface facilities	-	-	-	-	2.4	2.4
Storage	Cairo	MS coalescer surface facilities	-	-	2.9	-	-	2.9
Operations/Storage	Sayre / 184	Station 184/Sayre Backup generator	-	0.1	-	-	5.8	5.9
Operations/Storage	Herscher	Replace emergency generators and obsolete electrical	-	-	1.8	2.0	1.6	5.5
Operations/Storage	North Lansing / 388	Automation of controls on Dehy Plants	0.6	-	-	-	-	0.6
Gas Control	154	Automation/control panel upgrade	-	-	-	3.2	-	3.2
Gas Control	103	Automation of control systems and valves	0.9	0.9	-	-	-	1.8
Operations	343	Critical auxiliary spares	-	5.2	-	-	-	5.2
<b>Reliability/Resiliency Subtotal</b>			<b>\$ 4.9</b>	<b>\$ 7.4</b>	<b>\$ 5.2</b>	<b>\$ 7.3</b>	<b>\$ 13.5</b>	<b>\$ 38.4</b>
<b>B.) Green initiatives</b>								
Compression emissions	167	New Mexico ozone precursor	3.0	4.9	1.1	9.9	-	18.9
<b>Total Investment</b>			<b>\$ 8.0</b>	<b>\$ 12.3</b>	<b>\$ 6.3</b>	<b>\$ 17.2</b>	<b>\$ 13.5</b>	<b>\$ 57.3</b>

\* These projects are designed to improve the reliability of peak season storage deliverability, improve system response time to severe weather events, reduce outage durations, and reduce emissions

# Integrity Spending

# Category Description

- In Line Inspection (ILI)
  - Smart tools used to:
    - Identify general internal and external corrosion using ‘standard’ Magnetic Flux Leakage (MFL)
    - Identify longitudinal defects including long-seam corrosion using C-MFL (also known as an Axial Flaw Detection (AFD) tool)
- Electro-Magnetic Acoustic Transducer (EMAT) Runs
  - Smart tool used to identify Stress Corrosion Cracking (SCC)
- Pressure and Spike Tests
  - Hydrostatic pressure tests performed in pipeline sections that are not piggable or to complement EMAT in pipeline sections within high consequence areas (HCAs)
- Direct Assessment Testing for HCAs (DE, ECDA, SCCDA)
  - Visual pipe examinations performed in pipeline sections that are relatively short and/or not conducive to ILI or hydrostatic pressure tests

# Category Description

- Remediation
  - Pipeline repairs / remediation of anomalies identified by a smart tool run
- Other (Geohazards, Misc)
  - Reviews, assessments, and mitigation of pipeline hazards created by geological events such as landslides, floods, erosion, etc.
- Make Piggable
  - Installing or replacing facilities to allow the use of smart tools in a previously unpiggable pipeline section
- Drip Replacement and Removal
  - Removal or replacement of pipeline drips that are no longer necessary and may pose an integrity risk
- Wellhead Integrity Program
  - Activities related to down-hole logging (ILI) of storage wells and replacement of well head components



## 2023 Actual Pipeline Integrity Cost Summary by Division

Division	Cost Type	Activity Type	Actual \$
2	O&M	EMAT Runs	\$1,001,762
2	O&M	ILI	\$713,432
2	O&M	Remediation	\$927,489
2	Capital	Pressure Test 192.624	\$166,597
2	Capital	Remediation - Pipeline Replacement over 100ft	\$287,203
<b>Division 2 Total</b>			<b>\$3,096,483</b>

Division	Cost Type	Activity Type	Actual \$
4	O&M	ECDA, SCCDA, and DE for HCAs or 192.710	\$177,029
4	O&M	EMAT Runs	\$5,194,572
4	O&M	ILI	\$4,400,304
4	O&M	Remediation	\$2,861,459
4	Capital	Make Piggable	\$1,121,955
<b>Division 4 Total</b>			<b>\$13,755,319</b>

# 2023 Actual Pipeline Integrity Cost Summary by Division

Division	Cost Type	Activity Type	Actual \$
5	O&M	ILI	\$532,638
5	O&M	Remediation	\$533,608
5	Capital	Make Piggable	\$568,014
<b>Division 5 Total</b>			<b>\$1,634,259</b>

Division	Cost Type	Activity Type	Actual \$
6	O&M	EMAT Runs	\$2,791,896
6	O&M	Remediation	\$673,700
6	Capital	Make Piggable	\$67,084
6	Capital	Pipe Replacement	\$125,044
<b>Division 6 Total</b>			<b>\$3,657,724</b>

## 2023 Actual Pipeline Integrity Cost Summary by Division

Division	Cost Type	Activity Type	Actual \$
7	O&M	ECDA, SCCDA, and DE for HCAs or 192.710	\$278,155
7	O&M	EMAT Runs	\$8,881,673
7	O&M	ILI	\$5,969,452
7	O&M	Remediation	\$12,703,490
7	Capital	ASV/RCV Program	\$1,528,341
7	Capital	Drip Replacement and Removal	\$230,922
7	Capital	Make Piggable	\$29,881,528
7	Capital	Pipe Replacement	\$406,996
7	Capital	Pressure Test 192.624	\$1,671,657
7	Capital	Remediation - Pipeline Replacement over 100ft	\$3,051,014
<b>Division 7 Total</b>			<b>\$64,603,230</b>

Division	Cost Type	Activity Type	Actual \$
9	O&M	EMAT Runs	\$6,630,496
9	O&M	ILI	\$857,625
9	O&M	Remediation	\$4,316,083
9	Capital	Make Piggable	\$2,202,231
<b>Division 9 Total</b>			<b>\$14,006,435</b>

# 2023 Actual Pipeline Integrity Cost Summary by Division

Division	Cost Type	Activity Type	Actual \$
11	O&M	EMAT Runs	\$1,456,419
11	O&M	ILI	\$828,020
11	O&M	Remediation	\$1,271,181
<b>Division 11 Total</b>			<b>\$3,555,620</b>

Division	Cost Type	Activity Type	Actual \$
Other	O&M	Other (GeoHazards, Chemical Cleaning, etc.)	\$245,611
Storage	O&M	Well Bore Integrity Testing	\$2,102,000
<b>Other Total</b>			<b>\$2,347,611</b>

**Grand Total** **\$106,656,682**

# 2023 Actual Pipeline Integrity Spending Summary by Quarter

	Capital	O&M	Total
1st Quarter	\$ 7,564,677	\$ 9,913,342	\$ 17,478,020
2nd Quarter	\$ 8,942,213	\$ 22,584,397	\$ 31,526,610
3rd Quarter	\$ 18,362,800	\$ 20,196,775	\$ 38,559,575
<u>4th Quarter</u>	<u>\$ 6,438,896</u>	<u>\$ 12,653,581</u>	<u>\$ 19,092,477</u>
<b>Total</b>	\$ 41,308,587	\$ 65,348,095	\$ 106,656,682

# 2024 Planned Pipeline Integrity Cost Summary by Division

Division	Cost Type	Activity Type	Plan
2	O&M	ECDA, SCCDA, and DE for HCAs or 192.710	\$149,279
2	O&M	EMAT Runs	\$1,233,056
2	O&M	ILI	\$1,603,599
2	O&M	Remediation	\$1,288,522
2	Capital	Make Piggable	\$3,478,523
<b>Division 2 Total</b>			<b>\$7,752,979</b>

Division	Cost Type	Activity Type	Plan
4	O&M	ECDA, SCCDA, and DE for HCAs or 192.710	\$1,113,959
4	O&M	EMAT Runs	\$9,086,752
4	O&M	ILI	\$2,390,468
4	O&M	Remediation	\$1,605,480
4	Capital	Pipe Replacement	\$186,232
<b>Division 4 Total</b>			<b>\$14,382,892</b>

# 2024 Planned Pipeline Integrity Cost Summary by Division

Division	Cost Type	Activity Type	Plan
5	O&M	ILI	\$1,012,036
5	O&M	Remediation	\$81,406
<b>Division 5 Total</b>			<b>\$1,093,442</b>

Division	Cost Type	Activity Type	Plan
6	O&M	ECDA, SCCDA, and DE for HCAs or 192.710	\$600,000
6	O&M	EMAT Runs	\$2,914,675
6	O&M	ILI	\$1,881,930
6	O&M	Remediation	\$470,138
<b>Division 6 Total</b>			<b>\$5,866,743</b>

# 2024 Planned Pipeline Integrity Cost Summary by Division

Division	Cost Type	Activity Type	Plan
7	O&M	ECDA, SCCDA, and DE for HCAs or 192.710	\$720,506
7	O&M	EMAT Runs	\$8,188,237
7	O&M	ILI	\$3,107,456
7	O&M	Remediation	\$13,356,284
7	Capital	ASV/RCV Program	\$139,511
7	Capital	Make Piggable	\$6,886,530
7	Capital	Pipe Replacement	\$70,057
7	Capital	Pressure Test 192.624	\$5,165,412
7	Capital	Remediation - Pipeline Replacement over 100ft	\$67,225
<b>Division 7 Total</b>			<b>\$37,701,217</b>

Division	Cost Type	Activity Type	Plan
9	O&M	ILI	\$1,867,124
9	O&M	Remediation	\$2,155,316
9	Capital	Make Piggable	\$1,641,092
<b>Division 9 Total</b>			<b>\$5,663,532</b>



# 2024 Planned Pipeline Integrity Cost Summary by Division

Division	Cost Type	Activity Type	Plan
11	O&M	ECDA, SCCDA, and DE for HCAs or 192.710	\$161,886
11	O&M	EMAT Runs	\$1,625,545
11	O&M	ILI	\$436,049
11	O&M	Remediation	\$869,232
11	Capital	Make Piggable	\$4,873,738
<b>Division 11 Total</b>			<b>\$7,966,450</b>

Division	Cost Type	Activity Type	Plan
Other	O&M	Other (GeoHazards, Chemical Cleaning, etc.)	\$926,428
Storage	O&M	Well Bore Integrity Testing	\$2,159,000
<b>Other Total</b>			<b>\$3,085,428</b>

**Grand Total** **\$83,512,683**

# 2024 Planned Pipeline Integrity Spending Summary by Quarter

	Capital	O&M	Total
1st Quarter	\$ 396,259	\$ 6,142,335	\$ 6,538,595
2nd Quarter	\$ 4,805,686	\$ 22,193,525	\$ 26,999,212
3rd Quarter	\$ 11,937,450	\$ 18,008,078	\$ 29,945,529
<u>4th Quarter</u>	<u>\$ 5,368,924</u>	<u>\$ 14,660,424</u>	<u>\$ 20,029,348</u>
<b>Total</b>	\$ 22,508,320	\$ 61,004,363	\$ 83,512,683

# Outage Postings

- Natural updates a list of upcoming projects on its interactive website on a weekly basis.
- For a current list of projects, please follow this link:
  - <https://pipeportal.kindermorgan.com/PortalUI/DefaultKM.aspx?TSP=NGPL>
- Project-specific postings via EBB for projects with capacity impacts

# Outage Postings

**Natural Gas Pipeline Company**  
of America LLC

MONITOR WEBSITE DAILY FOR PIPELINE SYSTEM CHANGES.

Interstate ▾
Other ▾
Midstream ▾
Informational Postings ▾
Customer Information ▾
Contact Us
Login ▾

**Recent Notices (See Info Postings for all notices)**

**OFO**

**Planned Service Outage**  
 Jun 06 [Outage Impact Report - 6-6-2024](#)  
 Jun 04 [Seg12-Am#3 M/L-III Tool Runs-Upd2](#)

Page: [1] 2 3

**Capacity Constraints/FMJ**  
 May 29 [Targa Rojo Toro \(Loc 50169\)-Primary Only](#)

**Other Critical**  
 Jun 06 [Current Pipeline Conditions](#)  
 Jun 05 [Current Pipeline Conditions](#)

Page: [1] 2 3

**Non-Critical Notices**  
 Jun 06 [May 2024 Invoices](#)  
 Jun 03 [The Amp For May, 2024](#)

Page: [1] 2

**Open Seasons (See Info Postings for all notices)**

No Open Seasons  
[Open Season Documents](#)

**Service Programs**

- [Hub America](#)
- [LPS/SRO Program](#)
- [FastFirm](#)

**Other Postings**

**All Notices**  
[Critical Notices](#)  
[Non-Critical Notices](#)

**Operating Information**  
[Outage Impact Report](#)  
[Maintenance Outages \(Excel\)](#)

**Other Information**  
[Training Documents \(DART\)](#)  
[Training Videos \(DART\)](#)  
[System Maps](#)

**System Constraints (mouse over the map hotspots to view data)**

Highlight Locations ▾
Locs At/Near Capacity

Current Gas Day
Tomorrow's Gas Day

**LEGEND**

Location

Constraint

≤2% Available

No Data

DISCLAIMER: The summary information contained in this graphical display is a sampling of points for informational purposes only. This display should not be relied on by shippers in making or confirming commercial transactions. For a listing of available capacity, please go to the capacity link under Informational Postings.

**Weather Forecast data from weather.gov**

- [Chicago](#)
- [Omaha](#)
- [Wichita](#)

**On Call Assistance**

Scheduling Hotline	(713) 369-9683
Gas Control Hotline	(800) 733-2490
NGPL Marketing Hotline	(713) 420-6647

Proprietary Information

# Outage Postings

<b>NGPL - Outage Impact Report</b> <b>Seven Day Forecast (updated 06/20/24)</b>								-Significant restrictions to subscribed capacity may be necessary.
								-Major restrictions to subscribed capacity may be necessary.
								-Minor restrictions to subscribed capacity may be necessary.
								-No anticipated impact to subscribed capacity.
Station / Seg	Monday (6/24)	Tuesday (6/25)	Wednesday (6/26)	Thursday (6/27)	Friday (6/28)	Saturday (6/29)	Sunday (6/30)	Primary Outage(s) that may Impact Throughput
	Est. Minimum Percentage of Available Contracted MDQ							
Station 167 (segment 8 FH)	100%	100%	100%	100%	100%	100%	100%	
Station 167 (segment 9 FH)	100%	100%	100%	100%	100%	100%	100%	
Station 104 (segment 11 FH)	100%	100%	100%	100%	100%	100%	100%	
North of Sta 106 (segment 12 FH)	100%	75%	100%	100%	100%	100%	100%	X23-1142524: 106: ILI Tool Runs - Cleaning/Gauge 6/25, AFD 7/9 (6/25/2024 - 7/9/2024)
Station 107 Mills (segment 13 FH)	100%	100%	100%	100%	100%	100%	100%	
Station 801 (segment 15 FH)	100%	100%	100%	100%	100%	100%	100%	
West of Sta 394 (segment 17 BH)	100%	100%	100%	100%	100%	100%	100%	
South of Sta 341 (segment 20 FH)	100%	100%	100%	100%	100%	100%	100%	

# Outage Postings

Updated 6/20/2024  
 Natural Gas Pipeline 2024 Pipeline Outage and Maintenance Summary

This is a summary of the current status of NGPL Pipeline Outages and Maintenance Projects. This document is subject to change as the season progresses to reflect the updated status of all outages and maintenance projects including, but not limited to, project delays, cancellations and additions. Additionally, anticipated impact and restrictions are subject to change.  
 \*Unless otherwise noted, all listed meters will be physically shut-in for the duration of the project.  
 \*Unless otherwise noted, all scheduled dates represent gas days as defined in the Natural Gas Pipeline tariff to mean a period of twenty-four consecutive hours, beginning and ending at 9:00 a.m. (Central Clock Time).  
 \*Typical Timeline for ILI reporting is below.

Type of In-Line Inspection tool	# of weeks to determine a successful run	# of weeks to Preliminary Report	# of Weeks to Final Aligned Report
MFL	1-2	3-4	8-13
AFD	2-3	3-4	12-16
EMAT	2-3	N/A	17-30

\*\*\* Indicates revision

Outage #	Revised	Start Date	End Date	Reason Changed	Prev. Start Date	Prev. End Date	System	Line	Segment	Location	Scheduling Location	Maintenance Activity	Restriction Level	Pool Location	Meter(s) in Impacted Area
X20-877776		09/24/20	UFN				AM	INDIAN BASIN	7	CS 167	CS 167	Force Majeure - See latest Force Majeure Posting on Naturals EBB	Effective for gas day Thursday, September 24, 2020, Intraday 1 Cycle, Natural will schedule all transports to 0% of contract MDQ into and out of Segment 7. Segment 8 and Segment 9 of the Permian Zone are not impacted by this force majeure event.		
X23-374812		04/06/23	07/31/24				AM		8	168		Station Maintenance	This project has an impact to maximum capacity. However, in order to mitigate customer impact and based on current operating conditions, Natural does not anticipate limiting primary firm transport services, at this time. If conditions change Natural will post an update.		
X24-373725	***	04/03/24	07/17/24	Project Change		6/14/24	MKT	ILLINOIS LATERAL #2	29	110	TBD	Pipeline Integrity	If remediation is required, all transport services are at risk of not being fully scheduled.		
X23-867709		04/07/24	07/07/24				GC	LA #2	25	302/343	302	LA #2 Hydrotest Phase 3	Primary/SIP Firm transports will be scheduled to no less than 65.6% of contract MDQ eastbound through CS 302. AOR/ITS and Secondary out-of-path Firm transports are not available. Firm transportation associated with storage injections or withdrawals may be impacted.	TEXOK GC: West of Constraint	
X24-449139		04/26/24	UFN				AM	LOCKRIDGE LATERAL	9	Lockridge Lateral	LOC 47662	Force Majeure	LOC 47662 ATMOS PYOTE is unavailable. No transport services will be scheduled.		LOC 47662 ATMOS PYOTE
X23-1238601	***	06/03/24	06/28/24	Project Change		6/17/24	GC	GC #1	22	302/301		Pipeline Integrity	If remediation is required, all transport services are at risk of not being fully scheduled.		
X23-1130710	***	06/04/24	06/13/24	Completed			GC	GC #1	26	304/303		ILI Tool Runs - Cleaning/Gauge 6/4 to 6/5, Cleaning 6/6 to 6/7, MFL/Caliper/Hardspot 6/11 to 6/12	This project has an impact to maximum capacity. However, in order to mitigate customer impact and based on current operating conditions, Natural does not anticipate limiting primary firm transport services, at this time. If conditions change Natural will post an update.		
X24-144539	***	06/06/24	07/22/24	Project Change		7/12/24	GC	GC #2	28	310		Pipeline Maintenance	This project has an impact to maximum capacity. However, in order to mitigate customer impact and based on current operating conditions, Natural does not anticipate limiting primary firm transport services, at this time. If conditions change Natural will post an update.		
X23-1152983		06/10/24	07/31/24				GC	GC #1	22	302/301	TBD	Pipeline Integrity	If remediation is required, all transport services are at risk of not being fully scheduled.		
X23-1142512		06/11/24	06/21/24				AM	AM #3	11	103/104	103/104	ILI Tool Runs - Cleaning/Gauge 6/11, Cleaning 6/13, MFL/Caliper 6/18, AFD 6/20	Primary/SIP Firm transports will be scheduled to no less than 44% of contract MDQ through CS 104. AOR/ITS and Secondary out-of-path Firm transports are not available. Firm transportation associated with storage injections or withdrawals may be impacted.	Midcontinent: South of Constraint	

# Natural Gas Pipeline Company of America LLC (NGPL)

Shipper Meeting  
June 26, 2024