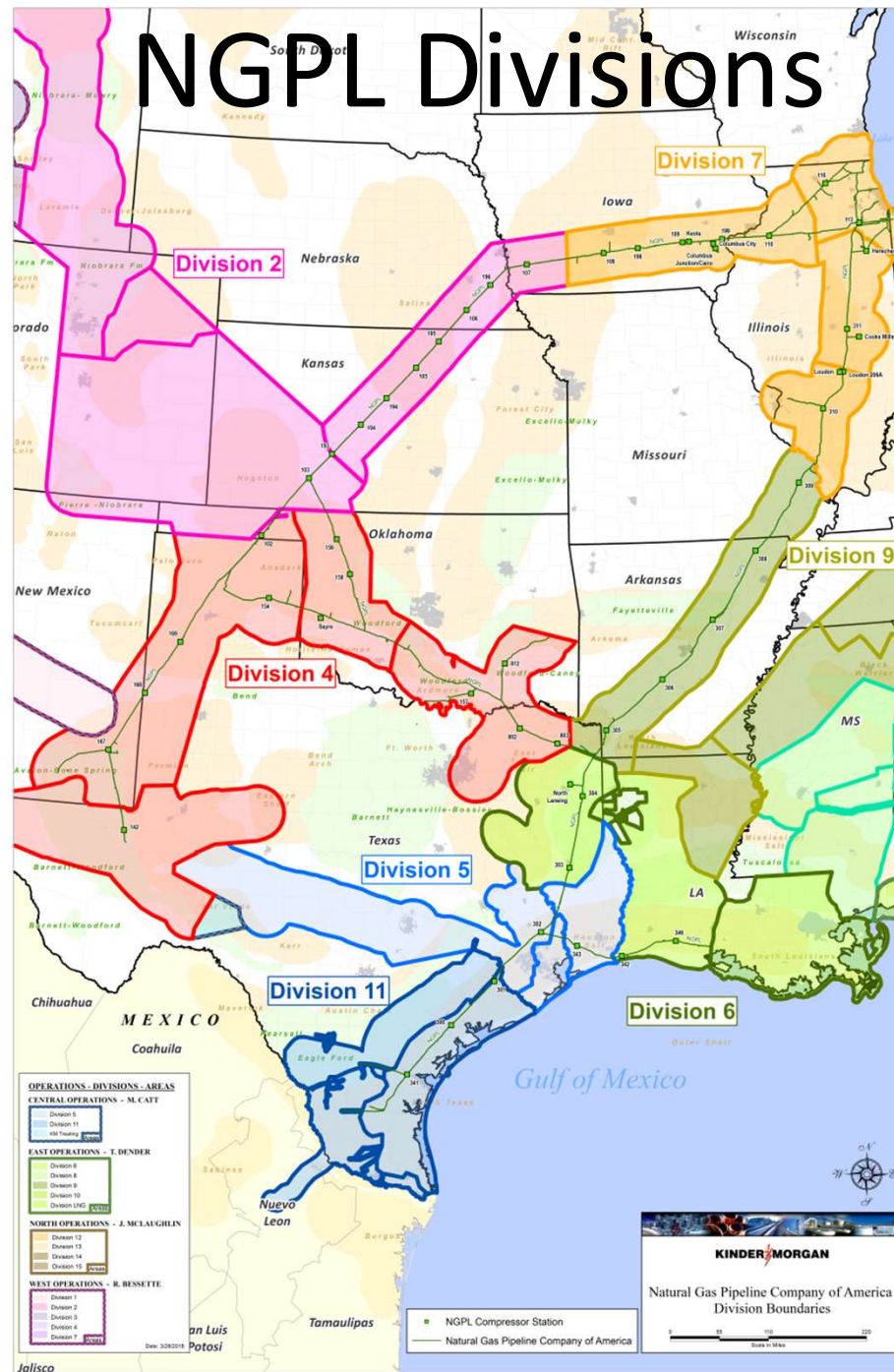


Natural Gas Pipeline Company of America LLC (NGPL)

Shipper Meeting
January 30, 2023

Spending Commitments

- In the 5-year period from 2023 through 2027 NGPL has committed to spend:
 - \$50,000,000 on reliability, resiliency, and green initiatives
 - \$450,000,000 on pipeline integrity related work
- This meeting fulfills NGPL's obligation under the Settlement for 2023 to report on spending annually
- The information included herein regarding NGPL's proposed integrity and reliability/resiliency/green expenditures for 2023 is based on planned projects and estimated costs therefor, and thus is subject to change



Reliability, Resiliency, and Green Initiative Spending

Reliability, Resiliency, and Green Initiative Spending

- Indicative projects included in NGPL's 5-year spending commitments*

Category	System/Station	Project Name	Spend Schedule (\$'s MM)						Total
			2023	2024	2025	2026	2027		
A.) <u>Reliability / Resiliency</u>									
Storage	HGV	HGV water withdrawal well recompletions (phase 1)	\$ 4.2	\$ -	\$ -	\$ -	\$ -	\$ 4.2	
Storage	HGV	HGV water withdrawal well recompletions (phase 2)	-	4.3	-	-	-	4.3	
Storage	HGV	HGV NE new withdrawal well	-	-	1.8	-	-	1.8	
Storage	Sayre	Wellbore enhancements/perforations/drill outs	-	0.9	-	-	-	0.9	
Storage	Columbus Junction	Columbus well work	-	-	6.0	-	-	6.0	
Storage	Columbus Junction	MS coalescer surface facilities	-	-	2.4	-	-	2.4	
Operations/Storage	Sayre / 184	Station 184/Sayre Backup generator	-	1.1	-	-	5.0	6.1	
Operations/Storage	North Lansing / 388	Automation of controls on Dehy Plants	-	-	-	1.1	0.8	1.9	
Operations	343	Spare parts inventory	-	-	2.8	-	-	2.8	
Gas Control	154	Automation/control panel upgrade	-	1.8	-	-	-	1.8	
Gas Control	308	Automation of Station 308	-	-	-	4.4	-	4.4	
Gas Control	103	Automation of control systems and valves	-	-	-	-	2.7	2.7	
B.) <u>Green Initiatives</u>									
Compression emissions	167	New Mexico ozone precursor	2.2	6.6	-	-	-	8.8	
Compression emissions	168	High pressure fuel system on Sta. 168 Unit #2	-	-	2.2	-	-	2.2	
			\$ 6.4	\$ 14.7	\$ 15.2	\$ 5.5	\$ 8.5	\$ 50.3	

* These projects are designed to improve the reliability of peak season storage deliverability, improve system response time to severe weather events, reduce outage durations, and reduce emissions

Integrity Spending

Category Description

- In Line Inspection (ILI)
 - Smart tools used to:
 - Identify general internal and external corrosion using ‘standard’ Magnetic Flux Leakage (MFL)
 - Identify longitudinal defects including long-seam corrosion using C-MFL (also known as an Axial Flow Detection (AFD) tool)
- Electro-Magnetic Acoustic Transducer (EMAT) Runs
 - Smart tool used to identify Stress Corrosion Cracking (SCC)
- Pressure and Spike Tests
 - Hydrostatic pressure tests performed in pipeline sections that are not piggable or to complement EMAT in pipeline sections within high consequence areas (HCAs)
- Direct Assessment Testing for HCAs (DE, ECDA, SCCDA)
 - Visual pipe examinations performed in pipeline sections that are relatively short and/or not conducive to ILI or hydrostatic pressure tests
- KMI Assessment Digs
 - Excavations performed to prove-up the existence of SCC using the “KMI process”
 - KMI Process – analytical method and system for predicting the location of stress corrosion cracking in a steel gas pipeline system which was patented in 2007

Category Description

- Remediation
 - Pipeline repairs / remediation of anomalies identified by a smart tool run
- Wellhead Integrity Program
 - Activities related to down-hole logging (ILI) of storage wells and replacement of well head components
- Other (Geohazards, Misc)
 - Reviews, assessments, and mitigation of pipeline hazards created by geological events such as landslides, floods, erosion, etc.
- Make Piggable
 - Installing or replacing facilities to allow the use of smart tools in a previously unpiggable pipeline section
- Drip Replacement and Removal
 - Removal or replacement of pipeline drips that are no longer necessary and may pose an integrity risk

2023 Pipeline Integrity Cost Summary by Division

Division	Cost Type	Activity Type	Plan
2	O&M	EMAT Runs	\$ 1,608,503
2	O&M	ILI	\$ 1,123,038
2	O&M	Remediation	\$ 447,850
2	Capital	Pressure Test 192.624	\$ 419,706
2	Capital	Remediation - Pipeline Replacement over 100ft	\$ 313,940
Division 2 Total			\$ 3,913,037

Division	Cost Type	Activity Type	Plan
4	O&M	ECDA, SCCDA, and DE for HCAs or 192.710	\$ 112,551
4	O&M	EMAT Runs	\$ 3,789,981
4	O&M	ILI	\$ 1,921,548
4	O&M	Remediation	\$ 849,947
4	O&M	Wellhead Integrity Program	\$ 190,300
4	Capital	Make Piggable	\$ 1,465,027
Division 4 Total			\$ 8,329,354

2023 Pipeline Integrity Cost Summary by Division

Division	Cost Type	Activity Type	Plan
6	O&M	EMAT Runs	\$ 2,413,603
6	O&M	ILI	\$ 140,150
6	O&M	Pipe Replacement	\$ 84,725
6	O&M	Remediation	\$ 96,656
6	O&M	Wellhead Integrity Program	\$ 220,500
6	Capital	Drip Replacement and Removal	\$ 312,495
6	Capital	Pipe Replacement	\$ 213,544
Division 6 Total			\$ 3,481,672

Division	Cost Type	Activity Type	Plan
7	O&M	ECDA, SCCDA, and DE for HCAs or 192.710	\$ 116,507
7	O&M	EMAT Runs	\$ 10,905,489
7	O&M	ILI	\$ 6,327,643
7	O&M	Pipe Replacement	\$ 449,456
7	O&M	Remediation	\$ 5,625,184
7	O&M	Wellhead Integrity Program	\$ 1,717,871
7	Capital	Make Piggable	\$ 20,813,243
7	Capital	Pipe Replacement	\$ 590,138
7	Capital	Pressure Test 192.624	\$ 3,194,851
7	Capital	Wellhead Integrity Capital Projects	\$ 982,273
Division 7 Total			\$ 50,722,654

2023 Pipeline Integrity Cost Summary by Division

Division	Cost Type	Activity Type	Plan
9	O&M	EMAT Runs	\$ 8,127,457
9	O&M	ILI	\$ 1,358,313
9	O&M	Remediation	\$ 628,264
9	Capital	Make Piggable	\$ 2,095,000
Division 9 Total			\$ 12,209,035

Division	Cost Type	Activity Type	Plan
11	O&M	EMAT Runs	\$ 1,322,583
11	O&M	ILI	\$ 738,447
11	O&M	Remediation	\$ 517,671
Division 11 Total			\$ 2,578,701

Division	Cost Type	Activity Type	Plan
Other	O&M	Other (GeoHazards, Chemical Cleaning, etc.)	\$ 2,287,500
Other	Capital	ASV/RCV Program	\$ 4,495,961
Other Total			\$ 6,783,461

Grand Total **\$ 88,017,915**

2023 Pipeline Integrity Spending Summary by Quarter

	Capital	O&M	Total
1st Quarter	\$ 5,678,011	\$ 4,760,781	\$ 10,438,792
2nd Quarter	\$ 12,890,107	\$ 30,227,874	\$ 43,117,980
3rd Quarter	\$ 15,524,801	\$ 16,382,277	\$ 31,907,078
<u>4th Quarter</u>	<u>\$ 803,260</u>	<u>\$ 1,750,805</u>	<u>\$ 2,554,064</u>
Total	\$ 34,896,178	\$ 53,121,736	\$ 88,017,915

Outage Postings

- Natural updates a list of upcoming projects on its interactive website on a weekly basis.
- For a current list of projects, please follow this link:
 - https://pipeline2.kindermorgan.com/Documents/NGPL/NGPL_OutageImpactReport.pdf
- Project-specific postings via EBB for projects with capacity impacts

Outage Postings

Natural Gas Pipeline Company of America LLC

MONITOR WEBSITE DAILY FOR PIPELINE SYSTEM CHANGES.

Interstate ▾ Other ▾ Midstream ▾ Informational Postings ▾ Customer Information ▾ Contact Us Login ▾

Recent Notices (See Info Postings for all notices)
OFO
Planned Service Outage
Jan 19 Outage Impact Report - 1-19-23
Jan 12 Outage Impact Report - 1-12-23
Page: [1] 2
Capacity Constraints/FMJ
Jan 24 Force Majeure - Comp Station 343
Jan 23 Fmj - Seg 3 MSM Line - Remediate -Lifted
Page: [1] 2 3
Other Critical
Jan 24 Current Pipeline Conditions
Jan 23 Current Pipeline Conditions
Page: [1] 2 3
Non-Critical Notices
Jan 19 Oper Capacity Rex Jefferson To Market
Jan 19 Oper Capacity Rex Moultrie To Market
Page: [1] 2
Open Seasons (See Info Postings for all notices)
No Open Seasons
Open Season Documents
Service Programs
Hub America
LPS/SRO Program
FastFirm
Other Postings
All Notices
Critical Notices
Non-Critical Notices
Operating Information
Outage Impact Report
Maintenance Outages (Excel)
Other Information
Training Documents (DART)
Training Videos (DART)
System Maps

System Constraints (mouse over the map hotspots to view data)
Highlight Locations ▾ Locs At/Near Capacity
Current Gas Day Tomorrow's Gas Day
LEGEND
Location
Constraint
≤24% Available
No Data
Evening - Jan 25 - Final
STA 107 Mills Seg 13
South of 106 Gage Seg 11
STA 199 Muscatine Seg 14
South of STA 312 Seg 28
Permian Zone Border Moore Seg 8
ARKOMA Line Bryan Seg 16
STA 801 Carter Seg 15
North of STA 394 CASS Seg 27
West of STA 394 TEXOK A/G CASS Seg 17
North of STA 302 Montgomery Seg 26
East of STA 302 Montgomery Seg 25
South of STA 302 Montgomery Seg 22
STA 167 Lockridge Lateral Seg 9
MEXICO
DISCLAIMER: The summary information contained in this graphical display is a sampling of points for informational purposes only. This display should not be relied on by shippers in making or confirming commercial transactions. For a listing of available capacity, please go to the capacity link under Informational Postings.
Weather Forecast data from weather.gov
Chicago
Omaha
Wichita
St. Louis
Little Rock
Oklahoma City
Amarillo
On Call Assistance
Scheduling Hotline (713) 369-9683
Gas Control Hotline (800) 733-2490
NGPL Marketing Hotline (713) 420-8647
Email Us

Proprietary Information

Outage Postings

Updated 1/26/2023

Natural Gas Pipeline 2023 Pipeline Outage and Maintenance Summary

This is a summary of the current status of all NGPL 2023 Pipeline Outages and Maintenance Projects. This document is subject to change as the season progresses to reflect the updated status of all outages and maintenance projects including, but not limited to, project delays, cancellations and additions. Additionally, anticipated impact and restrictions are subject to change.

*Unless otherwise noted, all listed meters will be physically shut-in for the duration of the project.

*Unless otherwise noted, all scheduled dates represent gas days as defined in the Natural Gas Pipeline tariff to mean a period of twenty-four consecutive hours, beginning and ending at 9:00 a.m. (Central Clock Time).

*Typical Timeline for ILI reporting is below.

Type of In-Line Inspection tool	# of weeks to determine a successful run	# of weeks to Preliminary Report	# of Weeks to Final Aligned Report
MFL	1-2	1-4	8-13
AFD	2-3	1-4	12-16
EMAT	2-3	N/A	17-20

*** Indicates revision

Outage #	Revised	Start Date	End Date	Reason Changed	Prev. Start Date	Prev. End Date	System	Line	Segment	Location	Scheduling Location	Maintenance Activity	Restriction Level	Pool Location	Meter(s) in Impacted Area
X20-877776		09/24/20	UFN				AM	INDIAN BASIN	7	CS 167	CS 167	Force Majeure - See latest Force Majeure Posting on Natural's EBB	Effective for gas day Thursday, September 24, 2020, Intraday 1 Cycle, Natural will schedule all transports to 0% of contract MDQ into and out of Segment 7. Segment 8 and Segment 9 of the Permian Zone are not impacted by this force majeure event.		
X22-1011816	***	11/30/22	02/28/23	Project Change			GC	GC #1	28	311	TBD	Pipeline Integrity	If remediation is required, all transport services are at risk of not being fully scheduled.		
X22-950770	***	01/04/23	01/25/23	Completed			AM	MM	3	156	LOC 5383 EMP-EORT Corn Washita	Force Majeure	LOC 5383 EMP-EORT Corn Washita is unavailable. No transport services will be scheduled.	Midcontinent, South of Constraint	LOC 5383 EMP-EORT Corn Washita
X22-863044	***	01/10/23	01/19/23	Completed			GC	ILLINOIS POWER LATERAL	28	310		ILI Tool Run - Cleaning 1/10, Gauge 1/17, MFL/Caliper 1/19	No anticipated impact		
X22-983272	***	01/31/23	02/02/23	Added			AM	PERMAIN #1	9	167	TBD	Pipeline Integrity	If remediation is required, all transport services are at risk of not being fully scheduled.		
X22-894777	***	02/06/23	02/08/23	Added			MKT	ROCKFORD LATERAL #1	29	113		ILI Tool Run - Cleaning/Gauge 2/6, AFD 2/8	No anticipated impact		
X22-973181	***	02/13/23	02/21/23	Added			MKT	ILLINOIS LATERAL #2	29	110	LOC 40257, LOC 37329, LOC 907112	ILI Tool Run - Cleaning/Gauge 2/13 thru 2/14, AFD 2/15 thru 2/16, EMAT 2/20 thru 2/21	Natural to schedule Primary Firm transports, only, at the delivery points: LOC 40257 Calpine Zion Energy Lake, LOC 37329 Lee City Power Plant, LOC 907112 Wise Elec Kenosha. No AOR/ITS, Secondary in-path or Secondary out-of-path Firm transports will be available until the work has been completed.		LOC 40257 Calpine Zion Energy Lake, LOC 37329 Lee City Power Plant, LOC 907112 Wise Elec Kenosha
X22-973225	***	02/14/23	02/14/23	Project Change	2/22/23	2/22/23	AM	MM	4	158/159		ILI Tool Run - EMAT 2/14	No anticipated impact		
X22-1011169	***	02/21/23	02/23/23	Project Change	2/14/23	2/16/23	AM	MM	4	159/103		ILI Tool Run - AFD 2/21, EMAT 2/23	No anticipated impact		
X22-1149213		03/01/23	04/28/23				GC	GC #2	27	307/308	TBD	Pipeline Integrity	If remediation is required, all transport services are at risk of not being fully scheduled.		
X22-976583	***	03/06/23	03/13/23	Added			AM	AM #2	14	110		ILI Tool Run - Cleaning/Gauge 3/6, MFL/Caliper 3/8, Hard Spot 3/13	No anticipated impact		
X22-976564		03/21/23	04/14/23				AM	AM #3	14	109	TBD	ILI Tool Run - Cleaning 3/21, Gauge 3/23, MFL/Caliper 3/30, AFD 4/11, EMAT 4/13	To be determined		
X22-894817		03/28/23	04/05/24				AM	AM #4	11	194		ILI Tool Run - Cleaning 3/28, Gauge 3/29, MFL/Caliper 3/30, AFD 4/4, EMAT 4/5	This project has an impact to maximum capacity. However, in order to mitigate customer impact and based on current operating conditions, Natural does not anticipate limiting primary firm transport services, at this time. If conditions change Natural will post an update.		

Proprietary Information

Natural Gas Pipeline Company of America LLC (NGPL)

Shipper Meeting
January 30, 2023