

Operator Confirmation Change Project

Prepared by:
Mike Baker, Senior Scheduler
May 22, 2018



Overview

- ✓ Operator Confirmation screen adds new data element:
 - ✓ **“Confirmation Sub Cycle Flag”**
 - ✓ **“Yes”** – Roll Operator-provided confirmation volume for remainder of a given gas day
 - ✓ **“No”** – Operator manages confirmation volume from cycle-to-cycle within a given gas day
 - ✓ Can set the Confirmation Sub Cycle flag to a single transaction or for the entire location
 - ✓ Can set the Confirmation Sub Cycle flag for a single gas day or to a date in the future

Overview

- ✓ Operator Confirmation screen changes:
 - ✓ Works closely with other operator confirmation instructions like the “*Maintain Confirmation by Exception*” instructions
- ✓ Effective for gas day June 1, 2018 and going forward

Operator Confirmation Instruction Setup



Operator Confirmation Screen w/“Conf Sub Cycle”

Submitted Confirmati
TSP: 15038 - COLORADO INTERSTATE GAS CO. AGENT:

NAESB Request for Confirmation/Confirmation Response

Conf Req Prop: 15038 Conf Req Name: COLORADO INTERSTATE GAS CO. Conf Req: 6914865
 Conf Pty Prop: Conf Pty Name: Conf Pty:

Report Date/Time: 5/22/2018 5:16:52 PM
 Beg Date: 6/1/2018 End Date: 6/1/2018
 Beg Time: End Time:
 Cycle: TIMELY Needs Confirmation: ExpandAllRows:

* Scheduled Quantities are subject to change until the NAESB Scheduled Quantities deadline

Loc Prop	Loc Name	Loc	Direction Flow	Prior Cycle Scheduled	Current Cy Nominate	Net Change	Needs Conf	Confirmed	Current Sched #	Conf Role
			Source	0	198,400	198,400	N	198,400	198,400	OPR

K Flo	Up/Dn Name	Up/Dn ID	Svc Req Name	Svc Req ID	Previous Sched	Current Nom Qty	TSP Cnf/ Sched Qty	TSP RR Code	Qty	RR (Operator)	Conf Sub Cycle	Current Sched	Current RR Code	Statu	Up/Dn K	Pkg ID
R					0	167,750	167,750		167,750		N	167,750		C		
R					0	1,000	1,000		1,000		Y	1,000		C		
R					0	29,250	29,250		29,250		Y	29,250		C		
R					0	400	400		400		Y	400		C		
Rcpt - Dlvly NET:					0	198,400	198,400		198,400			198,400				
Grand Summaries					0	198,400	198,400		198,400			198,400				

Conf Role: OPR UDP
 Layout Options: Show Zeros Name Prop ID ID Up/Dn K Pkg ID
 Grouping: SvcReq SvcReq + Pkg ID Up/Dn Prop NAESB WGQ basic view SvcReq + Up/Dn K SvcReq + Up/Dn K + Pkg ID

New DART Confirmation data field (managed by the Operator)

“Confirmation Sub Cycle” Flag

Operator Confirmation Screen w/ "Conf Sub Cycle"

Submitted | Confirmati

TSP: 15038 - COLORADO INTERSTATE GAS CO. /

NAESB Request for Confirmation/Confirmation Response

Confirm LDC Location | Confirm All Lines | Confirm Selected Line | **Submit** | Retrieve | Save As | Print

Conf Req Prop: 15038 Conf Req Name: COLORADO INTERSTATE GAS CO. Conf Req: 6914865
 Conf Pty Prop: Conf Pty Name: Conf Pty:

Report Date/Time: 5/22/2018 5:16:52 PM
 Beg Date: 6/ 1/2018 End Date: 6/1/2018
 Beg Time: End Time:
 Cycle: TIMELY Needs Confirmations: Expand All Rows:
 * Scheduled Quantities are subject to change until the NAESB Scheduled Quantities deadli

Conf Role: OPR UDP
 Layout Options: Show Zeros Name Prop ID ID Up/Dn K Pkg ID
 Grouping: SvcReq SvcReq + Pkg ID Up/Dn Prop NAESB WQ basic view SvcReq + Up/Dn K SvcReq + Up/Dn K + Pkg ID

Loc Prop	Loc Name	Loc	Direction Flow	Prior Cycle Scheduled	Current Cy Nominate	Net Change	Needs Conf	Confirmed	Current Sched *	Conf Role
	Source			0	198,400	198,400	N	198,400	198,400	OPR

K Flo	Up/Dn Name	Up/Dn ID	Svc Req Name	Svc Req ID	Previous Sched	Current Nom Qty	TSP Cnf/ Sched Qty	TSP RR Code	Qty	RR (Operator)	Conf Sub Cycle	Current Sched	Current RR Code	Statu	Up K/ Dn K	Pkg ID
R					0	167,750	167,750		167,750		N	167,750		C		
									1,000		Y	1,000		C		
									29,250		Y	29,250		C		
									400		Y	400		C		
						198,400			198,400							
						198,400										

Confirmation Subsequent Cycle Indicator

Role: OPR

Conf Sub Cycle:

Level

Location: Transaction: Up/Dn Name: Svc Req Name: Up K/Dn K: Pkg Id: K Flow:

Date Range

Single Day: Multi Day

Selecting Multi Day allows the Confirmation Subsequent Cycle Indicator to be set for multiple days; the confirmation quantity will not automatically repeat for multiple days

Beg Date: 06/01/2018 End Date: 6/ 1/2018

Beg Cycle: TIMELY

Last Mod User: Last Mod Date: 5/23/2018 10:54:14 PM

Save **Cancel**

Click into one of the turquoise "Conf Sub Cycle" Records to get indicator flag set up box

Setting “Conf Sub Cycle” Indicator

Confirmation Subsequent Cycle Indicator

Role : OPR

Conf Sub Cycle : **1**

Level

2 Location :

Transaction : Up/Dn Name :
Svc Req Name :
Up K/Dn K :
Pkg Id :
K Flow :

Date Range

3 Single Day:
 Multi Day **Selecting Multi Day allows the Confirmation Subsequent Cycle Indicator to be set for multiple days; the confirmation quantity will not automatically repeat for multiple days**

Beg Date : 06/01/2018 End Date :

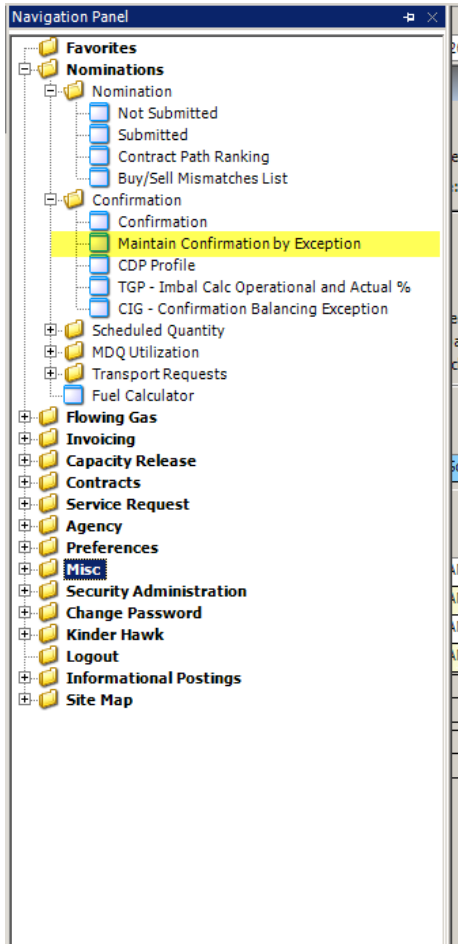
Beg Cycle : TIMELY

Last Mod User :

Last Mod Date : 5/23/2018 11:19:24 PM

- (1) Set “Conf Sub Cycle” Flag
“Y” = Yes
“N” = No
- (2) Set Level
Entire Location or
Individual Transaction(s)
- (3) Set Date Range
Single Day or
Multi Day (set end future
end date)

Maintain Confirmation by Exception Setup



Submitted | Confirmation | **Maintain C**

TSP: 15038 - COLORADO INTERSTATE GAS CO.

Point: [] []

Flow Date: 5/22/2018 Thru: 12/31/2049

Auto Confirm Indicator													
Point	Name	Cust Id	Customer	Role	Eff From	Eff Thru	Timely	Evening	ITRD1	ITRD2	ITRD3	Hourly/Late Cycle	Auto Match
				OPR	07/01/2015	12/31/2049	Y	N	N	N	N	N	

Change item

Point: [] []

Company: [] []

Role: OPR

Eff Start Date: 05/22/2018

Eff End Date: 12/31/2049

Last Mod User Id: sxs4567

Last Mod Date: 4/1/2016 9:20:45 PM

Auto Confirm Indicator

Timely

Evening

ITRD1

ITRD2

ITRD3

Hourly / Late Cycle

Set All to Y/N

Buttons: Close, Clear, Save, Print Preview, Print

- 1) Select "Maintain Confirmation by Exception"
- 2) Enter PIN to set confirmation parameters
- 3) Click in the appropriate cycle box(es) to be auto confirmed

Operator Confirmation Instruction Setup Scenarios



Setup Scenario 1

- 1) Set Confirmation by Exception (auto confirm) to “No” for all cycles
- 2) Set Conf Sub Cycle to “No”

Benefit: Operator has opportunity to explicitly confirm every transaction, every cycle, every day

Risk: Any nomination not confirmed by the Operator will be scheduled to zero (or the previous cycle’s final scheduled quantity)

Setup Scenario 2

- 1) Set Confirmation by Exception (auto confirm) to “No” for all cycles
- 2) Set Conf Sub Cycle to “Yes”

Benefit: Operator has opportunity to explicitly confirm every transaction, every day with no risk of EPSQ issues due to late under confirmations

Risk: Any nomination not confirmed by the Operator will be scheduled to zero

Setup Scenario 3

- 1) Set Confirmation by Exception (auto confirm) to “Yes” for all cycles
- 2) Set Conf Sub Cycle to “Yes”

Benefit: All nominations are confirmed to the maximum nominated volume in the Timely Cycle

Risk: Nomination increases will not be confirmed throughout the gas day unless the Operator *manually* confirms the increase in DART

Setup Scenario 4

- 1) Set Confirmation by Exception (auto confirm) to “Yes” for all cycles
- 2) Set Conf Sub Cycle to “No”

Benefit: Everything gets confirmed automatically unless the Operator specifies differently

Risk: If the Operator misses confirming manually, the scheduled and confirmed quantities may not be what the Operator would like

Setup Scenario 5

- 1) Set Confirmation by Exception (auto confirm) to “Yes” for the Timely cycle; all others “No”
- 2) Set Conf Sub Cycle to “No”

Benefit: The maximum volume, nominated in the Timely cycle, will get confirmed

Risk: Any new nomination will be scheduled to zero; nomination increases, will not be confirmed (held to previous cycle’s scheduled volumes)

Setup Scenario 6

- 1) Set Confirmation by Exception (auto confirm) to “Yes” for the Timely cycle; all others “No”
- 2) Set Conf Sub Cycle to “Yes”

Benefit: Operator will know early in the gas day what the maximum volume is for the gas day

Risk: Increases on existing nominations, in later cycles, will not be confirmed; new nominations, after Timely Cycle, will be scheduled to zero.

Confirmations Using EDI

- ✓ Locations confirmed via EDI:
 - ✓ No confirmation flag set up action required by EDI trading partners at this time



Questions?