



Delivering Energy to Improve Lives

El Paso Natural Gas Pipeline 2023 Winter Preparedness

November 7, 2023

Russ Pyeatt
Manager, Gas Control
(EPNG/Mojave/Sierrita)

Leader in North American Energy Infrastructure



Largest natural gas transmission network

- ~70,000 miles of natural gas pipelines move ~40% of U.S. natural gas production
- Have interest in 700 bcf of working storage capacity, ~15% of U.S. natural gas storage

Largest independent transporter of refined products

- Transport ~1.7 mmbbl^(a) of refined products to West and East Coast demand markets
- ~10,000 miles of refined products and crude pipelines

Largest independent terminal operator

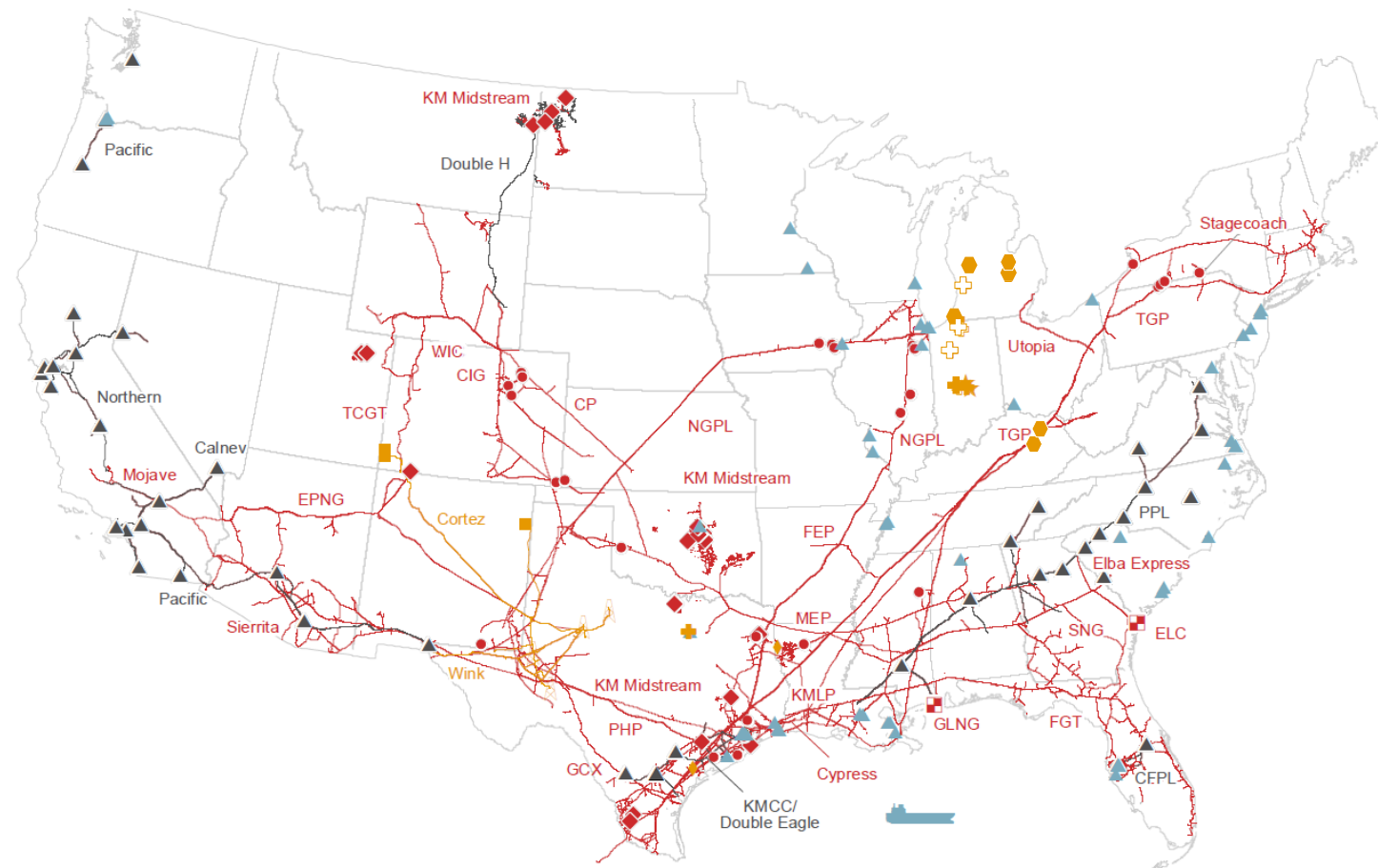
- 140 terminals & 16 Jones Act vessels
- Significant provider of refined products storage along the Houston Ship Channel, near the world's most complex refining center

Largest CO₂ transport capacity of ~1.5 bcfd

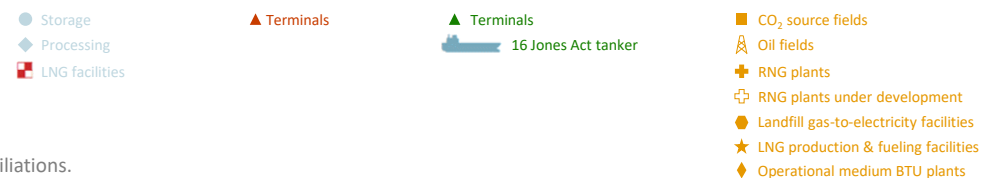
- ~1,500 miles of CO₂ pipelines
- Produce CO₂ and transport to the Permian where it is used for enhanced oil recovery

Growing Energy Transition Portfolio

- Up to 6.4 bcf^(a) of RNG production capacity by mid-2024



Business Mix



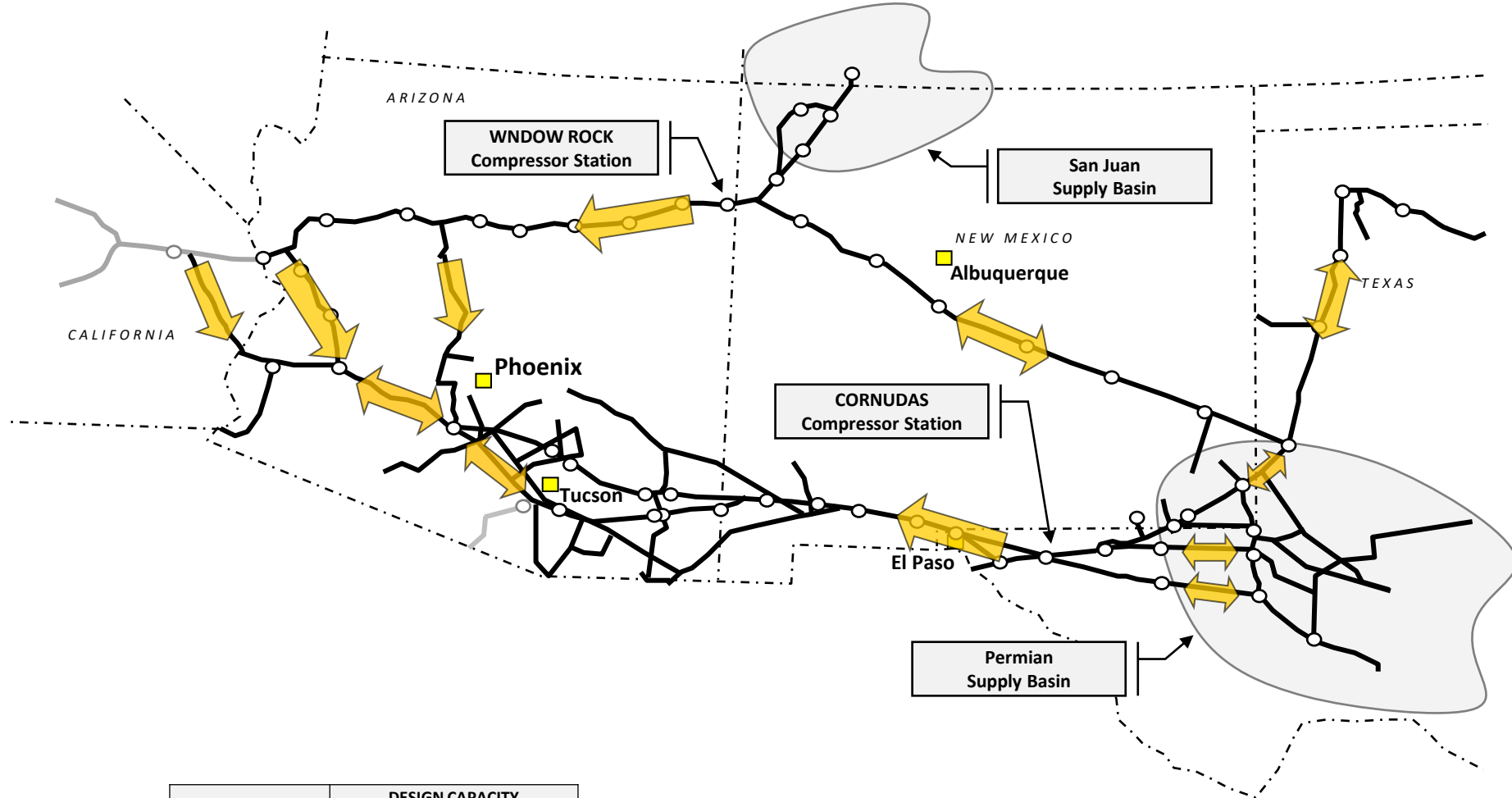
Note: Volumes per 2023 budget. Business mix based on 2023 budgeted Adjusted Segment EBDA. See Non-GAAP Financial Measures & Reconciliations.

a) Annual capacity at KM share.

Operations Overview

EPNG System Overview

Supply Locations and Flow Direction



El Paso Natural Gas (EPNG) is a pipeline system which transports natural gas from the San Juan, Permian and Anadarko basins to California, Arizona, Nevada, New Mexico, Oklahoma, Texas and Northern Mexico. EPNG also owns approximately 44 billion cubic feet of underground working natural gas storage capacity in Southeast New Mexico.

EPNG estimates its winter day, sustainable mainline peak day capacity as measured at Window Rock and Cornudas as **4,882 MMcfd**.

The **Mojave Pipeline** is a pipeline system that connects with the EPNG system near Topock, Arizona, Cadiz, California, the Transwestern systems in Arizona, and Kern River Gas Transmission Company in California.

The **Sierrita Gas Pipeline (Sierrita)** is a pipeline system that extends from the El Paso Natural Gas pipeline system, near Tucson, Arizona, to the United States-Mexico border near Sasabe, Arizona.

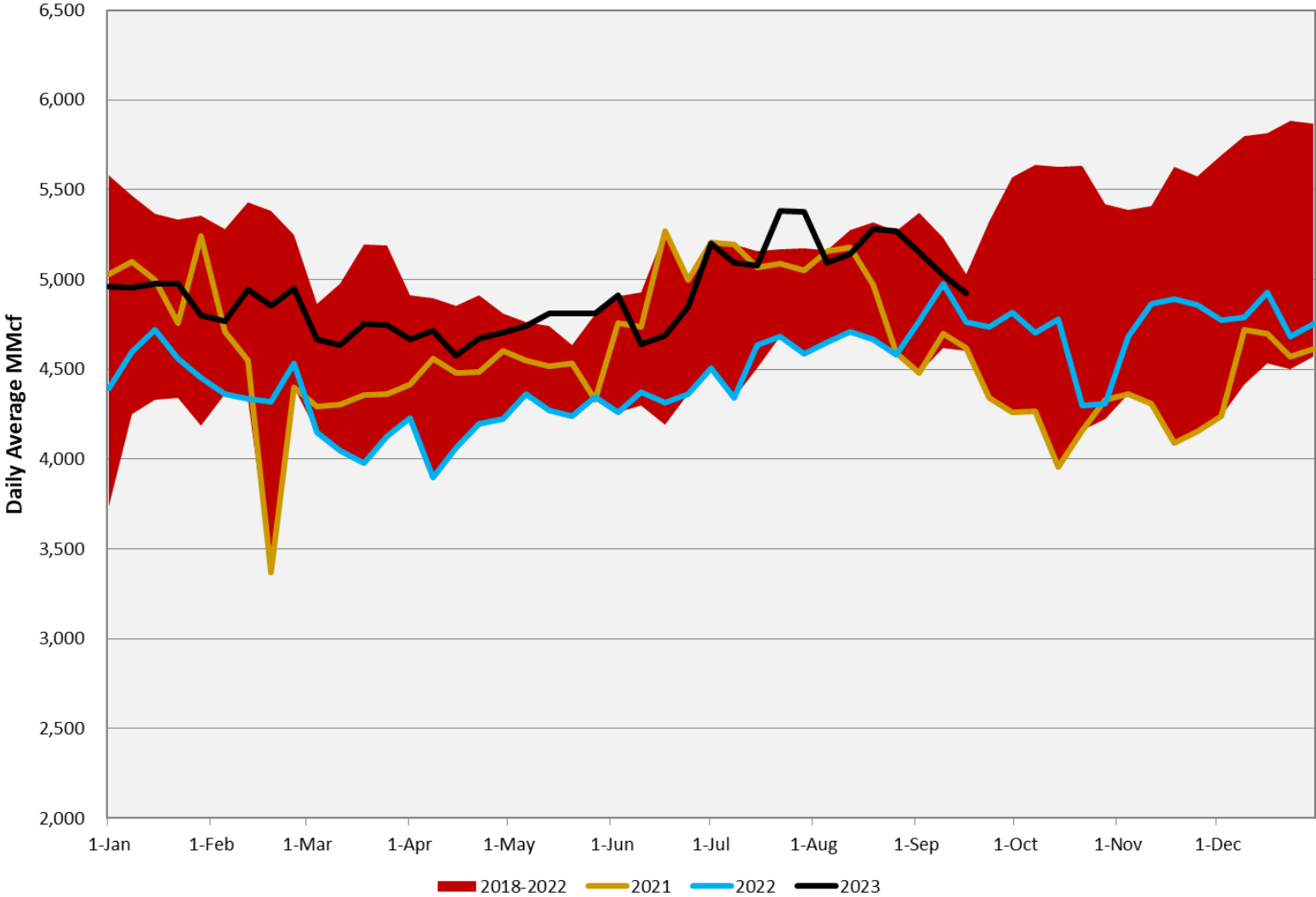
CONSTRAINT	DESIGN CAPACITY [MMcf/d]
Cornudas	2,535
Window Rock	2,348

EPNG Total System

2018-2023 Throughput Trends (MMcf/d)



EPNG Total Throughput

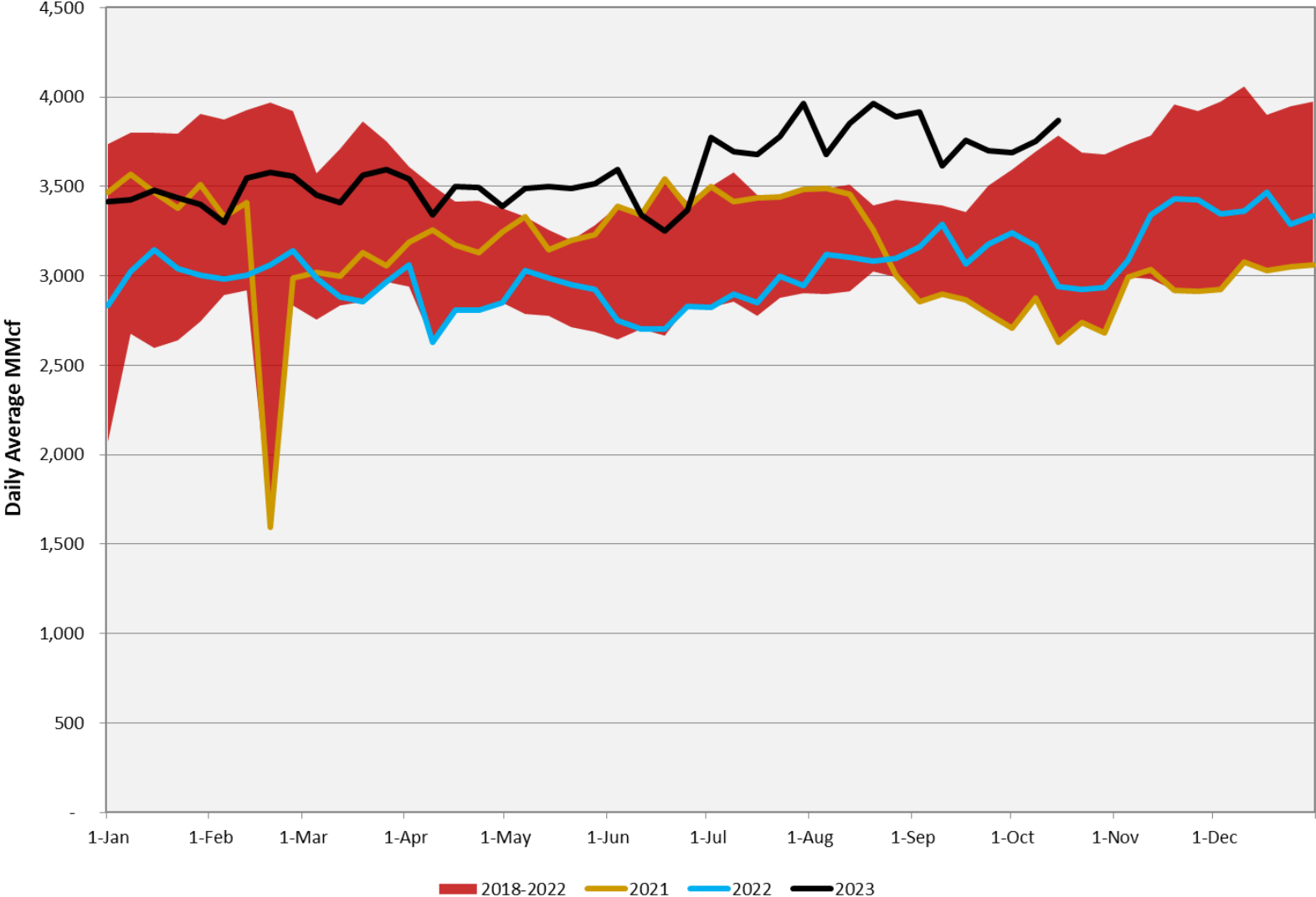


Permian Basin Receipts

2018-2023 Trends (MMcf/d)



EPNG Permian Basin Receipts

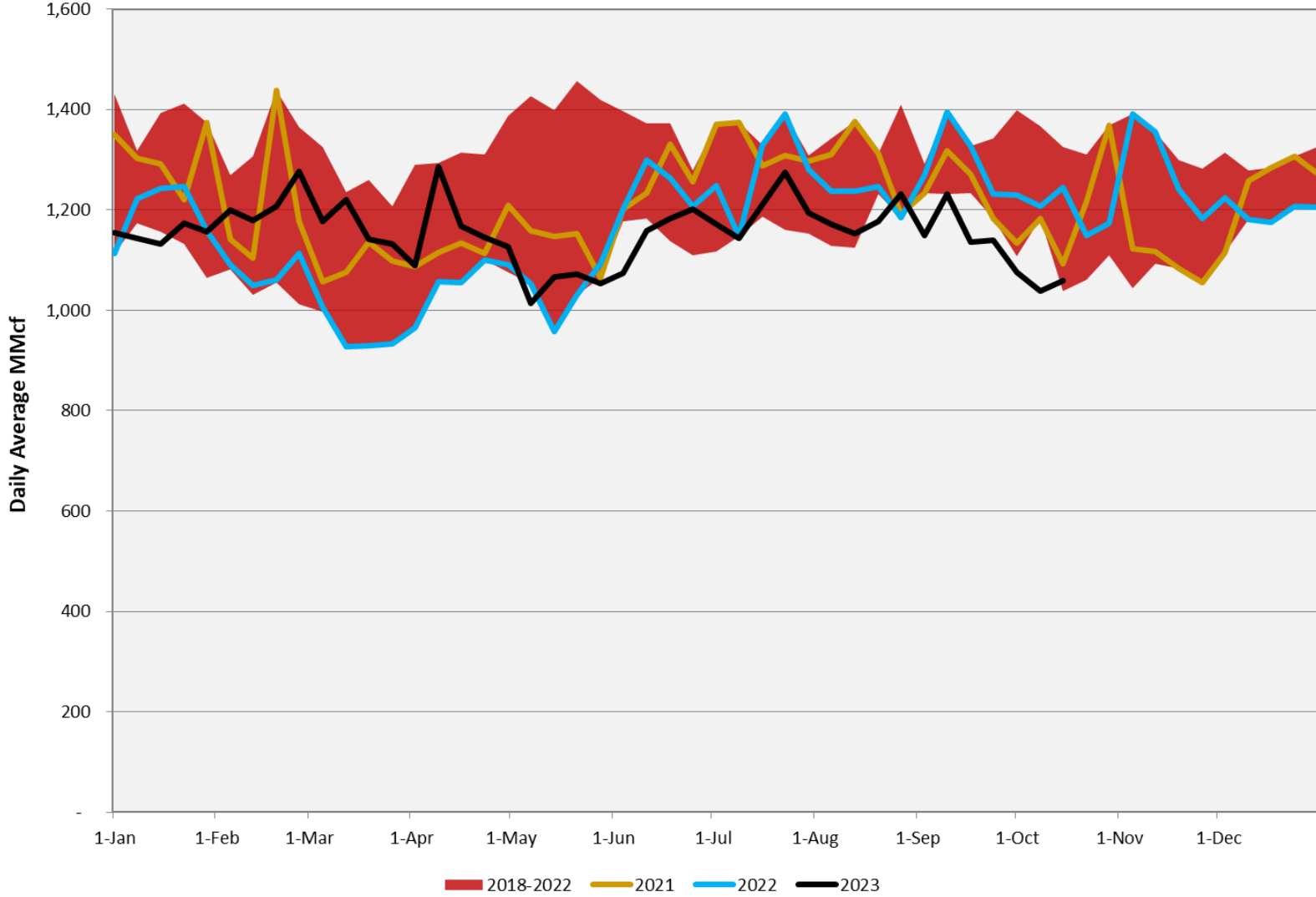


San Juan Basin Receipts

2018-2023 Trends (MMcf/d)



EPNG San Juan Basin Receipts



Winter Preparedness

- Staffing
 - Gas Control is 24 x 7 x 365.
 - Field technicians are on-site or on-call.
- Communication and Coordination
 - Customer-specific winter preparedness meetings or communications.
 - Monitor Weather Forecast.
 - Conference Calls between Gas Control and Operations to discuss preparations.
 - Shipper and Stakeholder Mass Communication via EBB notices.
 - Shipper-Specific Communications.
 - Over communicate regarding Weather Forecasts.
- Operational Response
 - Multiple flow paths for supply to reach the market.
 - Access to supply area storage: Washington Ranch, Keystone Gas Storage and Merchant Ranch Storage.
 - EPNG has developed excellent working relationships with both affiliated and non-affiliated interconnecting pipelines which provide additional layers of contingency management in responding to emergency situations.

Emergency Communications

- Shipper and Stakeholder Mass Communication
 - EBB Notices
 - Emails to shipper-maintained group email addresses
 - Telephone message sent by EPNG to emergency contacts
 - System Status Hotline (1-855-762-0100) parties can call for a recorded status of the system (updated as needed throughout an event)
- Standard critical notice to promote quicker action
- Banner on internet homepage to alert users to an emergency

Maintenance Planning Process and Communications

Annual Maintenance Planning Process

- July/August – Process Begins
 - Review of annually recurring maintenance
 - Development of Pipeline Integrity project list for the next year.
 - Development of additional O&M and project related maintenance outages for the next year.
- October
 - Gas Control preliminary review.
 - Project Planning Meeting with Project Engineering , Pipeline Engineering and Operations to review global schedule.
- November
 - Gas Control Review of Global Schedule .
 - Operations meetings/concalls to resolve scheduling conflicts.
 - Preliminary capacity impact analysis by System Design for larger outages.
 - Approval of Annual Plan.
- Communication to Customers
 - December 15 - Annual Plan for 1st Quarter posted to EBB.
 - Mid-March - Annual Plan updated for the remainder of the year posted to the EBB.

Communication to Customers (continued)

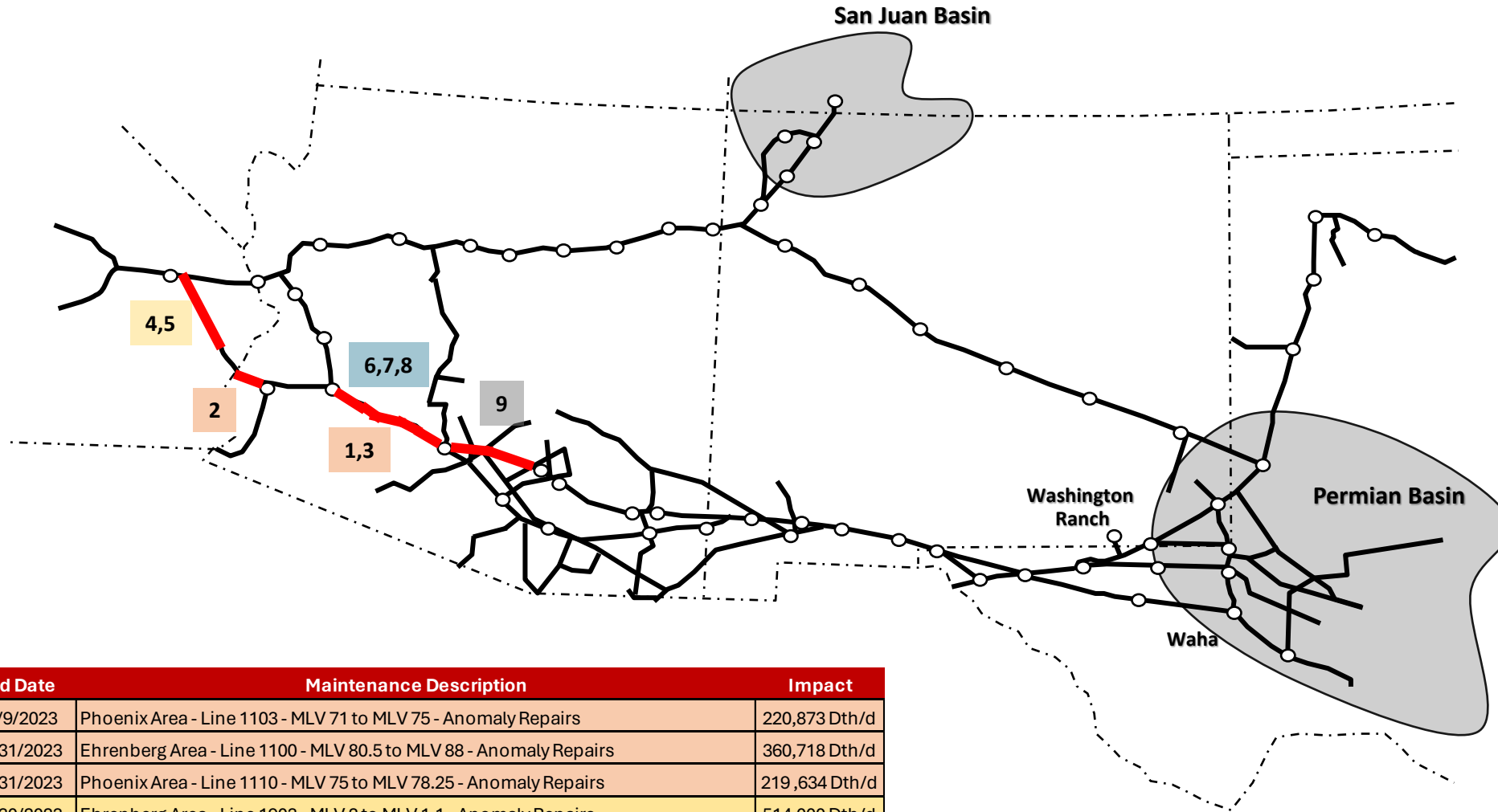
- Monthly Maintenance
 - Monthly schedule posted 9 business days before the following month.
 - Updated as required prior to and during the month.

- EBB
 - EPNG - <https://pipeportal.kindermorgan.com/PortalUI/DefaultKM.aspx?TSP=EPGD>
 - Mojave - <https://pipeportal.kindermorgan.com/PortalUI/DefaultKM.aspx?TSP=MOJD>
 - Sierrita - <https://pipeportal.kindermorgan.com/PortalUI/DefaultKM.aspx?TSP=SGP>

Planned Maintenance

Nov 2023/Dec 2023

November/December Maintenance Highlights



Item	Start Date	End Date	Maintenance Description	Impact
1	11/3/2023	11/9/2023	Phoenix Area - Line 1103 - MLV 71 to MLV 75 - Anomaly Repairs	220,873 Dth/d
2	9/14/2023	12/31/2023	Ehrenberg Area - Line 1100 - MLV 80.5 to MLV 88 - Anomaly Repairs	360,718 Dth/d
3	10/18/2023	12/31/2023	Phoenix Area - Line 1110 - MLV 75 to MLV 78.25 - Anomaly Repairs	219,634 Dth/d
4	11/14/2023	11/30/2023	Ehrenberg Area - Line 1903 - MLV 2 to MLV 1.1 - Anomaly Repairs	514,000 Dth/d
5	11/14/2023	11/30/2023	Bakersfield Area - Line 1903 - MLV 5 to MLV 4.2 - Anomaly Repairs	514,000 Dth/d
6	12/19/2023	12/19/2023	Phoenix Area - Line 1600 - Casa Grande to Wenden - Cleaning Tool Run	350,000 Dth/d
7	12/20/2023	12/20/2023	Phoenix Area - Line 1600 - Casa Grande to Wenden - ILI Tool Run	350,000 Dth/d
8	12/22/2023	12/22/2023	Phoenix Area - L1600 - Casa Grande to Wenden ILI Tool Run	350,000 Dth/d
9	12/6/2023	12/6/2023	Tucson Area - L2000 - Tom Mix to Casa Grande MLV 36.75 to MLV 40 - ILI Tool Run	400,000 Dth/d

Gas Control Contacts

- **Russ Pyeatt - Manager**
 - (719) 520-3729 (office)
 - (505) 320-4556 (cell)
 - russ_pyeatt@kindermorgan.com
- **Dan English - Lead Controller**
 - (719) 520-4722 (office)
 - (719) 659-3210 (cell)
 - dan_english@kindermorgan.com
- **Morgan McCasland - Lead Controller**
 - (719) 520-4339 (office)
 - (505) 716-6925 (cell)
 - morgan_mccasland@kindermorgan.com
- **John Althoff- Maintenance Planner**
 - (719) 667-7750 (office)
 - (719) 314-8976 (cell)
 - john_althoff@kindermorgan.com

Thank You