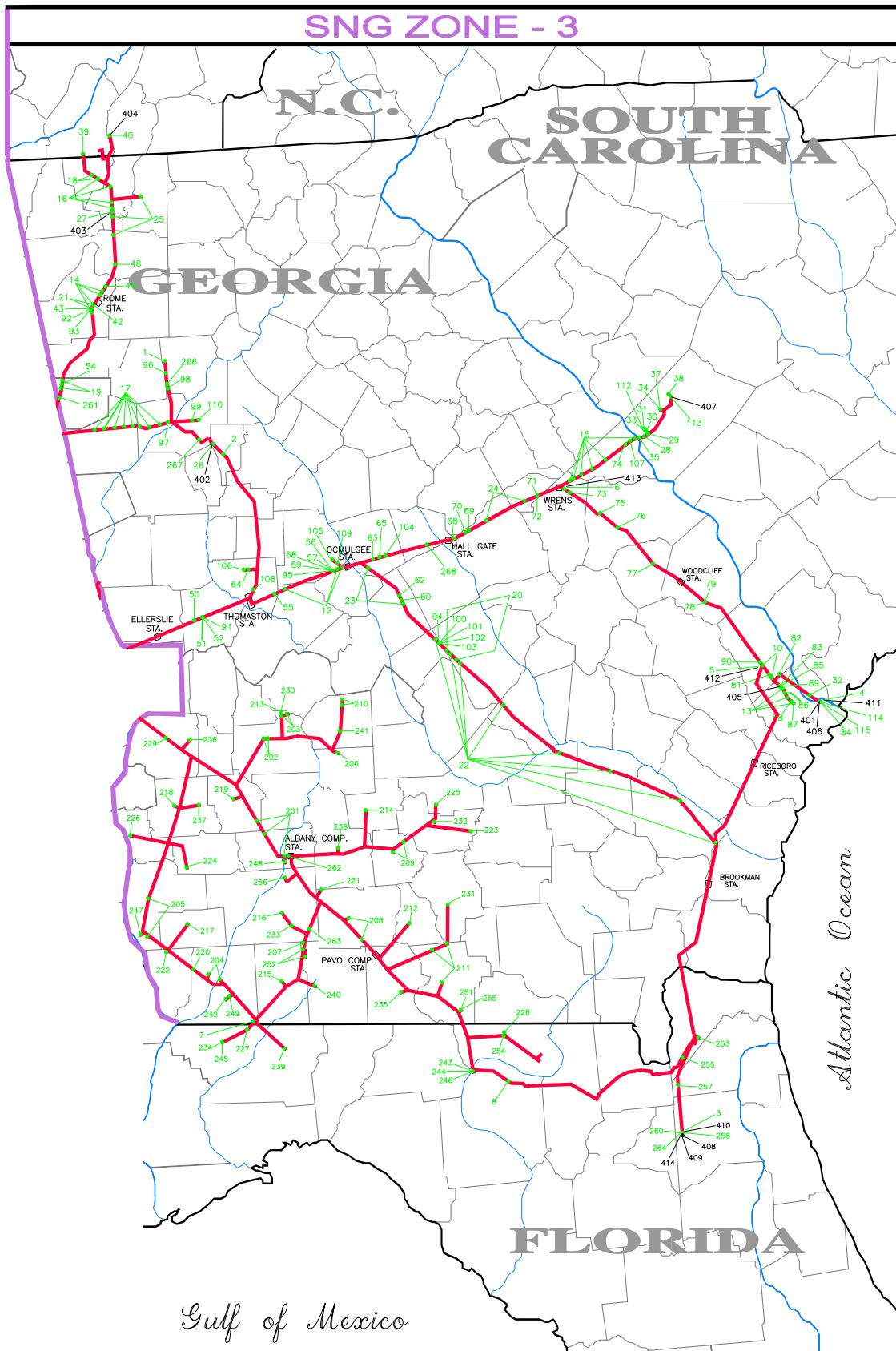


SNG ZONE - 3



GENERAL SYSTEM MAP

LEGEND

- SOUTHERN NATURAL GAS PIPELINES
- COMPRESSOR STATIONS
- RECEIVING POINTS
- DELIVERY POINTS

TARIFF MAP
RECEIPT AND DELIVERY POINTS
ZONE "3"



Southern Natural Gas Company, L.L.C.
a Kinder Morgan company

**ZONE 3 POINTS
 RECEIPT POINTS**

Map No.	Point Code	Point/Meter Station Name
ZONE 3 - GEORGIA RECEIVING		
401	060000	ELBA TO SNG
402	043200	TRANSCO - JONESBORO TO SNG (DISPL)
403	606110	EAST TENN - WHITFIELD CTY TO SNG (DISPL)
404	790310	EAST TENN - CLEVELAND TO SNG #1 (DISPL)
405	936510	SCGP - PORT WENTWORTH TO SNG (DISPL)
406	060020	ELBA TO SNG CYPRESS
407	783610	CGTC - AIKEN TO SNG (DISPL)
408	606301	FGT - JACKSONVILLE TO FGT (DISPL)
409	606321	FGT - JACKSONVILLE TO FGT (DISPL) CYPRESS
410	606331	FGT - JACKSONVILLE TO FGT (DISPL) MAGNOLIA
411	060040	ELBA TO SNG MAGNOLIA BRUNSWICK (DISPL)
412	606360	CYPRESS EEC TO SNG
413	606370	WRENS EEC TO SNG
414	606351	CYPRESS - SEACOAST TO SNG (DISPL)

DELIVERY POINTS

Map No.	Point Code	Point/Meter Station Name
1	912200	AGL - MARIETTA
2	911300	AGL - SOUTH ATLANTA NO.1
3	606330	FGT - JACKSONVILLE TO FGT MAGNOLIA
4	060050	ELBA TO SNG MAGNOLIA BRUNSWICK
5	606361	CYPRESS SNG TO EEC (DISPL)
6	606380	WRENS SNG TO EEC
7	960630	ACTIVE MINERALS DECATUR COUNTY
8	960620	CENTRAL FLORIDA GAS SUANNEE COUNTY
14	940013	AGL - ROME AREA 904200 AGL - ROME NO.1 904300 AGL - ROME NO.2 904500 AGL - ROME NO.4 906200 AGL - SHANNON
15	940016	AGL - AUGUSTA AREA 931600 AGL - BLYTHE 932000 AGL - AUGUSTA NO.1 932100 AGL - AUGUSTA NO.2 932200 AGL - AUGUSTA NO.3 932300 AGL - AUGUSTA NO.4
16	940017	DALTON AREA 904600 DALTON NO.1 904800 DALTON NO.3 904900 DALTON NO.4 905000 DALTON NO.2
17	940018	AGL - ATLANTA SUBURBS 902800 AGL - BOWDEN 903000 AGL - BREMEN 909000 AGL - CARROLLTON 909200 AGL - TEMPLE 909400 AGL - VILLA RICA 910100 AGL - YATES JUNCTION 910200 AGL - NEWNAN JUNCTION 910400 AGL - DOUGLASVILLE
18	940019	AGL - CHATTANOOGA LINE N. 907800 AGL - CATOOSA COUNTY 908000 AGL - RINGGOLD
19	940020	AGL - CEDARTOWN - ROCKMART AREA 903600 AGL - CEDARTOWN 903800 AGL - ROCKMART

20	940028	DUBLIN AREA 916700 DUBLIN NO.2 916800 DUBLIN NO.3
21	940039	CARTERSVILLE AREA 905600 CARTERSVILLE 905700 CARTERSVILLE NO.2
22	940041	AGL - BRUNSWICK LINE 918400 AGL - DANVILLE 918600 AGL - DEXTER 920400 BRUNSWICK EAST 918800 EASTMAN 919200 ALAMO 919400 HAZELHURST 919600 BAXLEY 919800 JESUP
24	940043	AGL - EAST SOUTH MAIN ZONE 3 932500 AGL - SANDERSVILLE 930600 AGL - WARRENTON
25	940045	AGL - CALHOUN - CHATSWORTH AREA 907200 AGL - CALHOUN NO.1 907300 AGL - CALHOUN NO.2 907600 AGL - CHATSWORTH
23	940047	AGL - MACON SOUTH AREA 915500 AGL - MACON EAST 918200 AGL - JEFFERSONVILLE
10	940049	AGL - SAVANNAH NORTH AREA 934200 AGL - SPRINGFIELD-GUYTON 934900 AGL - SAVANNAH NO.4
13	940050	AGL - SAVANNAH SOUTH 934600 AGL - SAVANNAH NO.1 934700 AGL - SAVANNAH NO.2 934800 AGL - SAVANNAH NO.3
12	940055	AGL - MACON WEST AREA 915400 AGL - MACON NORTH 915600 AGL - MACON WEST 915800 AGL - MACON-MILLEDGEVILLE NO.1
26	043201	TRANSCO - JONESBORO TO TRANSCO
27	606100	EAST TENN - WHITFIELD COUNTY TO ETNG
28	780200	SCPL - NORTH AUGUSTA
29	780300	PLANT URQUHART
30	780500	DIXIE CLAY
31	780600	SCPL - BATH
32	780800	SCPL - DEL WEBB TAP
33	781200	KENTUCKY-TENNESSEE CLAY NO.1
34	781600	SCPL - GRANITEVILLE
35	782400	KIMBERLY-CLARK
37	782700	AVONDALE MILLS
38	783500	SOUTHEASTERN CLAY
39	790200	CHATTANOOGA
40	790300	EAST TENN - CLEVELAND TO ETNG NO.1
42	790750	PLANT MARGLEN
43	905400	SUMMERVILLE
44	905500	ADAIRSVILLE
48	907400	CALHOUN, CITY OF
50	913800	PLANT TALBOT COUNTY - OGLETHORPE POWER
51	914000	TALBOTTON
52	914200	MANCHESTER
54	914500	SEWELL CREEK
55	914800	FORT VALLEY
56	915000	JOINTLY OWNED BOARD NO.1
57	915001	COCHRAN
58	915002	HAWKINSVILLE

59	915003	PERRY
60	915100	WARNER ROBINS NO.2
62	915700	WARNER ROBINS NO.3 - MGAG
63	916200	MONTICELLO
64	916300	WEST GEORGIA GENERATING
65	916400	EATONTON-GRAY
68	930100	PLANT WASHINGTON COUNTY (TIGER CREEK)
69	930200	SPARTA
70	930300	PLANT DUKE-SANDERSVILLE
71	931000	THOMSON, GEORGIA
72	931200	WRENS
73	931300	WRENS NO.2
74	932400	PCS NITROGEN
75	932800	LOUISVILLE
76	933000	WAYNESBORO
77	933200	MILLEN
78	933600	STATESBORO
79	933800	SYLVANIA
81	934400	CLAXTON
82	935000	PLANT MCINTOSH
83	935100	WILLAMETTE INDUSTRIES - PORT WENTWORTH
84	935200	ELBA - SNG REDELIVERY FOR ELBA FUEL
85	935300	SAVANNAH SUGAR
86	935900	OWENS CORNING FIBERGLAS
87	936300	ARIZONA CHEMICAL 88 936400 INTERNATIONAL PAPER NO.2 - SAVANNAH
89	936500	SCGP - PORT WENTWORTH TO SCGP
90	936700	PLANT EFFINGHAM COUNTY
91	914400	WOODLAND
92	906000	TRION
93	905800	LAFAYETTE
94	915200	JOINTLY OWNED BOARD NO.2
95	915004	BYRON
96	909800	AGL - DALLAS #2
97	910600	AUSTELL #1
98	910700	AUSTELL #2
99	910800	AGL - FULTON INDUSTRIAL
100	915201	COCHRAN #2
101	915202	HAWKINSVILLE #2
102	915203	PERRY #2
103	915204	BYRON #2
104	915900	AGL - MACON-MILLEDGEVILLE #2
105	917300	SMARR
106	917600	AGL - THOMASTON
107	932900	DSM CHEMICAL
108	937100	AGL - SOUTH THOMASTON
109	937200	AGL - BASS JUNCTION
110	937400	AGL - BEN HILL
112	782900	GRANITEVILLE SPECIALITY FABRICS
113	783600	CGTC - AIKEN TO CGTC
114	060010	ELBA - SNG TO ELBA (DISPLACEMENT)
115	060030	ELBA TO SNG CYPRESS (DISPLACEMENT)
201	960020	ALBANY AREA - SGA 960021 ALBANY # 1 - SGA 960022 ALBANY # 2 - SGA 960023 ALBANY (LILLISTON) - SGA
202	960030	AMERICUS AREA - SGA 960031 AMERICUS # 1 - SGA 960032 AMERICUS # 2 - SGA
203	960040	ANDERSONVILLE/MULCOA AREA - SGA 960042 ANDERSONVILLE # 2 - SGA 960043 ANDERSONVILLE # 3 - SGA
204	960060	BAINBRIDGE AREA - SGA

		960061 BAINBRIDGE # 1 - SGA
		960062 BAINBRIDGE # 2 - SGA
205	960070	BLAKELY AREA - SGA
		960071 BLAKELY # 1 - SGA
		960072 BLAKELY # 2 - SGA
206	960110	CORDELE AREA - SGA
		960111 CORDELE #1 - SGA
		960112 CORDELE #2 - SGA
207	960240	MEIGS AREA - SGA
		960241 MEIGS # 1 - SGA
208	960260	MOULTRIE AREA - SGA
		960261 MOULTRIE # 1 - SGA
		960262 MOULTRIE # 2 - SGA
209	960378	TIFTON AREA - SGA
		960370 TIFTON - SGA
		960375 TIFTON #2 - SGA
210	960380	UNADILLA AREA - SGA
		960381 UNADILLA #1 - SGA
		960382 UNADILLA #2 - SGA
211	960390	AGL - VALDOSTA AREA - SGA
		960391 AGL - VALDOSTA #1 - SGA
		960392 AGL - VALDOSTA #2 - SGA
		960393 AGL - VALDOSTA #3 - SGA
212	960010	ADEL - SGA
213	960041	ANDERSONVILLE # 1 - SGA
214	960050	ASHBURN - SGA
215	960080	CAIRO - SGA
216	960090	CAMILLA - SGA
217	960100	COLQUITT - SGA
218	960120	CUTHBERT - SGA
219	960130	DAWSON - SGA
220	960140	DECATUR COUNTY - SGA
221	960150	DOERUN - SGA
222	960160	DONALSONVILLE - SGA
223	960170	DOUGLAS - SGA
224	960180	EDISON - SGA
225	960190	FITZGERALD - SGA
226	960200	FORT GAINES - SGA
227	960210	HAVANA - SGA
228	960220	JASPER - SGA
229	960230	LUMPKIN - SGA
230	960250	AGL - MONTEZUMA - SGA
231	960270	NASHVILLE - SGA
232	960280	OCILLA - SGA
233	960290	PELHAM - SGA
234	960300	QUINCY - SGA
235	960310	QUITMAN - SGA
236	960320	RICHLAND - SGA
237	960330	SHELLMAN - SGA
238	960340	SYLVESTER - SGA
239	960350	TALLAHASSEE - SGA
240	960360	THOMASVILLE - SGA
241	960400	VIENNA - SGA
242	960410	ENGELHARD - SGA
243	960420	FLORIDA POWER - SGA
244	960425	FLORIDA POWER #2 - SGA
245	960430	ENGLEHARD-QUINCY - SGA
246	960440	GOLDKIST - SGA
247	960450	GEORGIA PACIFIC CORPORATION - SGA
248	960460	MERCK & COMPANY - SGA
249	960470	MILWHITE - SGA
250	960500	OIL DRI OF GEORGIA - SGA

251	960510	PACKAGING CORP - SGA
252	960520	WAVERLY MINERAL - SGA
253	960530	JACKSONVILLE - SGA
254	960540	WHITE SPRINGS NEW - SGA
255	960590	PEOPLES - BAKER COUNTY - SGA
256	960600	SOWEGA POWER - SGA
257	937500	PLANT BRANDY BRANCH - JEA
258	606300	FGT - JACKSONVILLE TO FGT
260	606320	FGT - JACKSONVILLE TO FGT CYPRESS
261	907000	AGL - SYSTEMWIDE FARM TAPS
262	960021	ALBANY #1 - SGA
263	960091	CAMILLA #2 - SGA
264	606350	CYPRESS - SNG TO SEACOAST
265	960511	PACKAGING CORP #2 - SGA
266	910900	AUSTELL #3
267	935800	PLANT MCDONOUGH
268	916600	DUBLIN NO. 1